

# FERRI<sup>®</sup>

Offset/in-line slope mowers  
for agriculture and green areas

## ZMGE





## Offset/in-line slope mowers for agriculture and green areas

The new offset model ZMGE, compact and versatile, is the ideal solution for cleaning the edges of plots of land, ditch banks and green areas in general, suitable for tractors from 40 to 70 HP. Recommended for grass, bushes, prunings up to a diameter of 1" 1/4.

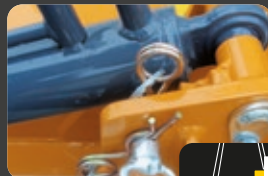
The ZMGE model can be configured with a rotor equipped with drop forged hammers or with Y multiuse flails for particularly accurate grass trimming.



### SAFETY



Hydraulic block tap for transport with manual activation (no chains or holders).



Mechanical block pin for transport (no chains or holders).



Gearbox unit outside the transmission cover (more offset and less PTO angle).

### RELIABILITY



Mechanical locking pin for transportation (no chains, no brackets).



Hydraulic side shift cylinder fitted within the parallel arms for better protection during work.

# FERRI®



ZMGE1400

ZMGE1600



## PERFORMANCE



Adjustable Rear Roller  
ø 5.5".



Rotor internal sealed  
bearings.



Floating frame  
following the ground  
contours.

## TECHNICAL



Hydraulic  
lock tap for  
transport.  
Manual engagement.



Rotation joint on self  
lubricating bushing.



# Offset/in-line slope mowers for agriculture and green areas

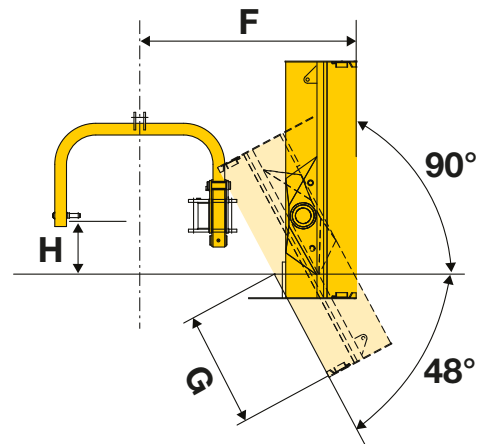
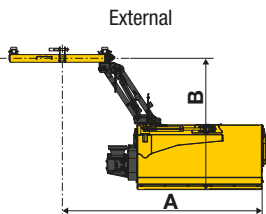
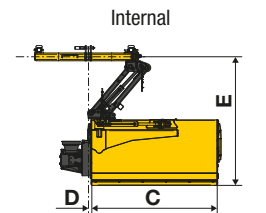
| Technical data      |         | ZMGE    |         |
|---------------------|---------|---------|---------|
| Model               |         | 1400    | 1600    |
| Cutting width       | ft      | 4' 8"   | 5' 4"   |
| Max Sidesliding*    | ft      | 8' 6"   | 9' 2"   |
| Flail head angle    |         | 48°/90° | 48°/90° |
| Weight              | lbs     | 981     | 1025    |
| Tractor             | HP      | 40/70   | 40/70   |
| Min. Tractor weight | lbs     | 3527    | 3748    |
| Min. Tractor width  | ft      | 4' 11"  | 4' 11"  |
| Pto                 | MAX Rpm | 540     | 540     |
| Blade tip speed     | ft/sec  | 47      | 47      |

\* Reach measured from tractor centre line to head edge

| Flails                                       |              | ZMGE  |      |
|--|--------------|-------|------|
| Interchangeable on the same rotor            |              | 1400  | 1600 |
| "Y" blades for grass, shrubs, bushes         | Ø max 1 1/4" | N° 54 | 66   |
| Forged hammer-blades for woods, grass, twigs | Ø max 1 3/4" | N° 18 | 22   |



| Working positions (ft):<br>right hand linkage |    | ZMGE1400 | ZMGE1600 |
|---|----|----------|----------|
| A   | ft | 8'6"     | 9'2"     |
| B   | ft | 5'11"    | 5'11"    |
| C   | ft | 4'8"     | 5'4"     |
| D   | ft | 0'5"     | 0'5"     |
| E   | ft | 5'8"     | 5'8"     |
| F   | ft | 5'5"     | 5'5"     |
| G   | ft | 3'4"     | 4'       |
| H   | ft | 1'4"     | 1'4"     |



www.ferri-america.com



**FERRI srl**  
Via Govoni, 30  
44034 Tamara (FE) Italy  
Tel. +39 0532 866866  
Fax +39 0532 866851  
info@ferrisrl.it - www.ferrisrl.it



**North America Sales and Marketing Manager / FERRI**  
Ronald E. Roglis - Glenarm, Illinois 62536  
Cell (314) 422-9460 - Fax (217) 483-4123  
ron.roglis@gmail.com

**Parts Stock / FERRI:**  
J.S. Woodhouse Co., Inc. - 1314 Union Street  
P.O. Box 1169 - West Springfield, Ma. 01090 U.S.A.  
tel. 413-736-5462 - fax 413-732-3786  
info@jswoodhouse.com