

ENGLISH

# Hakki Pilke

# Falcon

## FIREWOOD PROCESSOR SPARE PARTS MANUAL



**MAASELÄN KONE OY**

Valimotie 1, FI-85800 Haapajärvi, Finland

Tel. +358 (0)8 772 7300, Fax +358 (0)8 772 7320

[info@maaselankone.fi](mailto:info@maaselankone.fi)

[www.maaselankone.fi](http://www.maaselankone.fi)

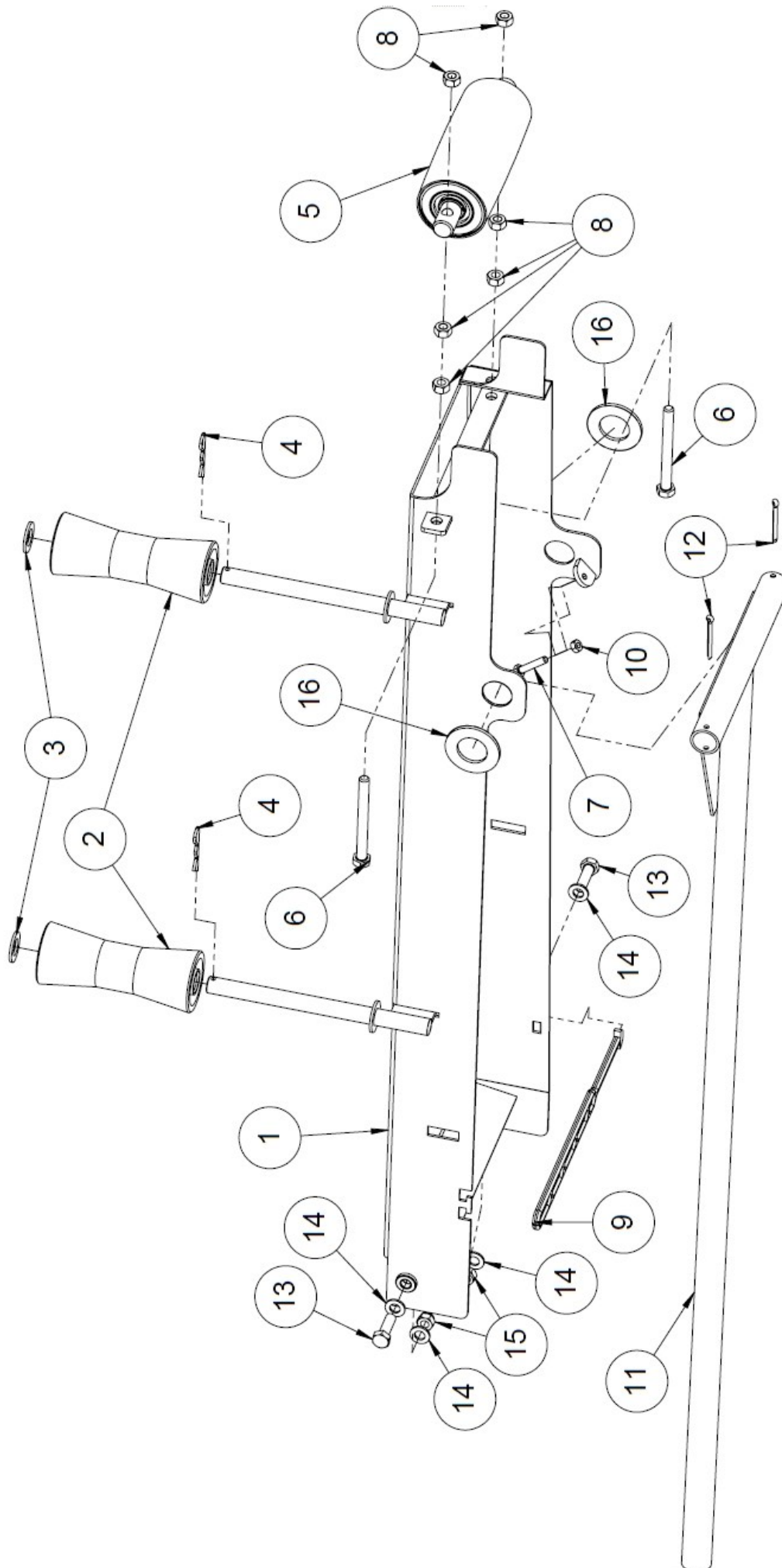


## Contents

1.1	Input (50012752) .....	5
1.2	Input table parts list (50012752) .....	6
1.3	Input table tensioning roller (37524).....	7
1.4	Wood gripper (50004099) .....	8
1.5	Parts list.....	9
1.6	Height adjustment lever of the splitting knife (50004469) .....	10
1.7	Splitter return mechanism (50009805) .....	11
1.8	Oil tank (50009983) .....	12
1.9	Oil tank parts list .....	13
1.10	Frame .....	14
1.11	Frame parts list .....	15
1.12	Saw drive head (50010223) .....	16
1.13	Saw drive head parts list.....	17
1.14	Splitting mechanism (50010370) .....	18
1.15	Operating lever (50012229).....	19
1.16	Splitting mechanism trigger (50012252) .....	19
1.17	Splitting end guard (50013269) .....	20
1.18	Wood measuring device (50016021).....	21
1.19	Splitting mechanism cylinder (50016295) .....	22
1.20	Saw chain lubrication pump (50016796) .....	23
1.21	Input conveyor drive roller assembly (50017534).....	24
1.22	Output conveyor turning device (50017575) .....	25
1.23	Turning device (50017575) parts list .....	26
1.24	Control valve (50016298).....	27
1.25	Pressure control valve (50016300) .....	28
1.26	Flow control valve (50016299) .....	29
1.27	Auxiliary device control assembly (50016297) .....	30
1.28	Auxiliary device control valve (37638).....	31
1.29	Output conveyor .....	32
1.30	Output conveyor parts list .....	33
1.31	Output conveyor upper section, self-cleaning conveyor (37400) .....	34
1.32	Self-cleaning conveyor parts list (upper section).....	35
1.33	Hydraulic pump + multiplier gearbox (50008181).....	36
1.34	Splitting cylinder (50000124) .....	37
1.35	Control panel 50013005 .....	38
1.36	Control panel parts list (50013005) .....	39
1.37	Splitting valve (50009823) .....	40

1.38	Saw valve (50016293) .....	41
1.39	High-speed valve (50016292) .....	42
1.40	Tractor drive model (35010) .....	43
1.41	Tractor drive model parts list (35010) .....	44
1.42	Input conveyor tap (50016294) .....	46
1.43	Output conveyor relief valve (61216) .....	47

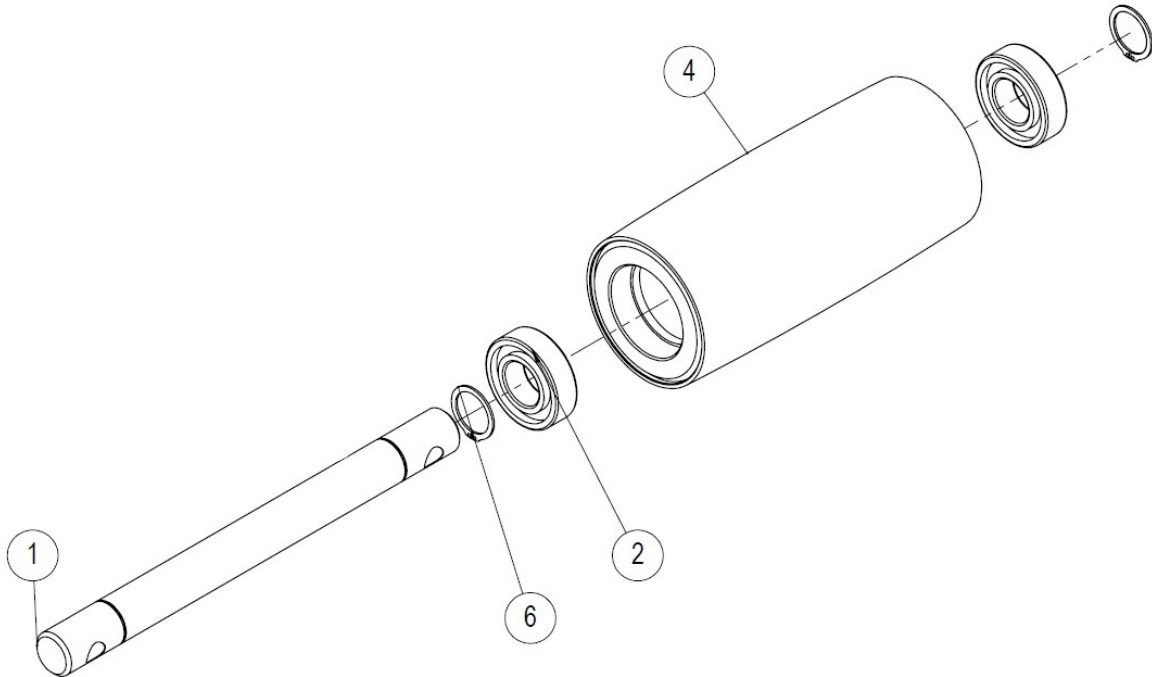
## 1.1 Input (50012752)



## 1.2 *Input table parts list (50012752)*

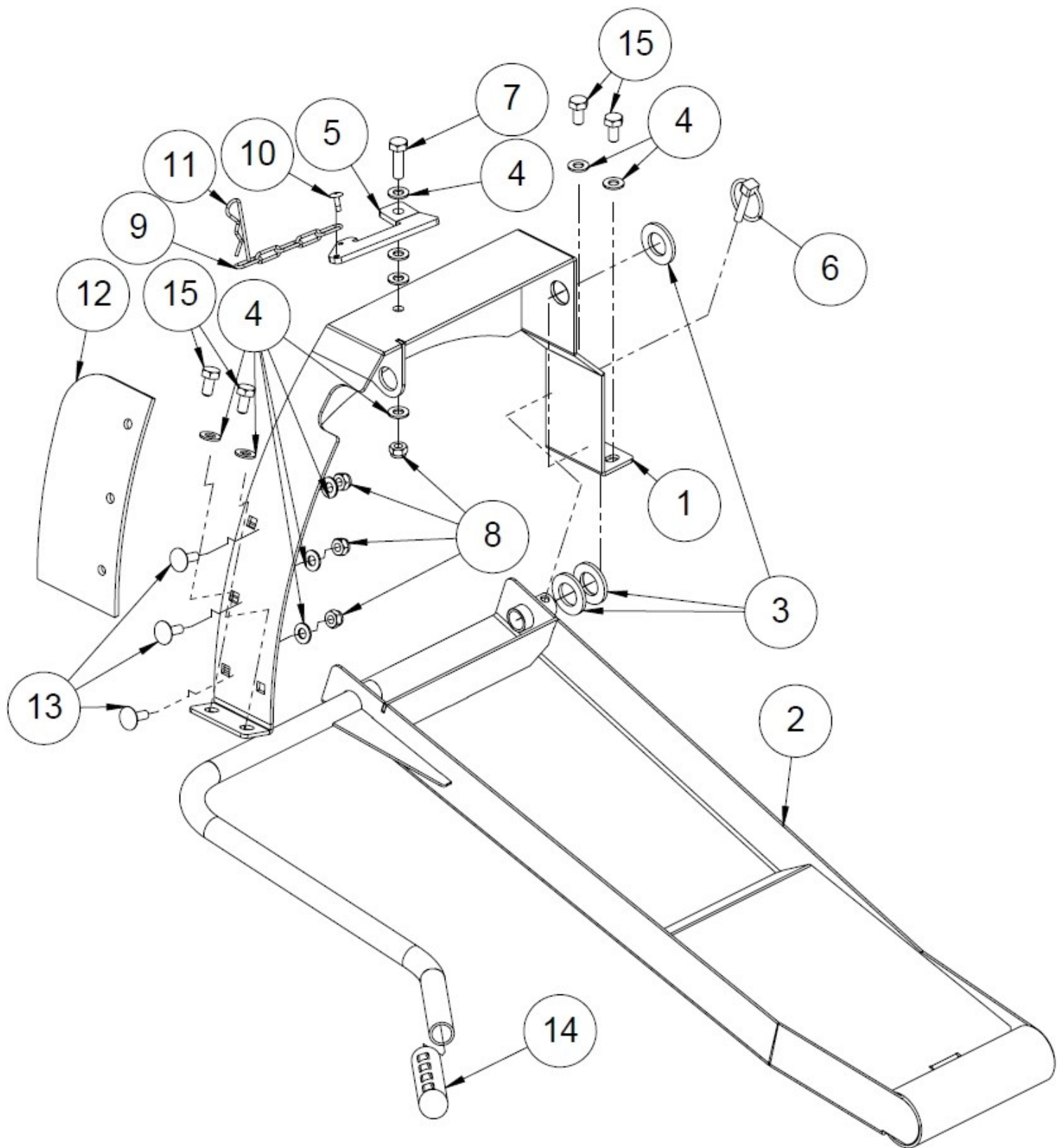
<b>Number</b>	<b>Name</b>	<b>Part number</b>	<b>Dimensions</b>	<b>Pcs</b>
16	Washer	96410	A36	2
15	Locking nut	96218	M12	2
14	Washer	96058	A12	4
13	Hex screw	96148	M12x40	2
12	Split pin	96250	5x50	2
11	Support for input table extension	50012751		1
10	Hex nut	96196	M8	1
9	Rubber cover/fastener	95645		1
8	Hex nut	96200	M12	6
7	Hex screw	96123	M8x40	1
6	Hex screw	96142	M12x120	2
5	Tensioning roller	37524		1
4	Hitch pin	96208		2
3	Washer	96053	A20	2
2	Keel roller	95001		2
1	Input table extension	50012750		1

### 1.3 *Input table tensioning roller (37524)*



No.	Part number	Name	Pcs
1	37529	Tensioning roller shaft	1
2	95050	Bearing, SKF - 6205	2
4	37509	Tensioning roller	1
6	96042	Retaining ring DIN 471 25	2

### 1.4 Wood gripper (50004099)

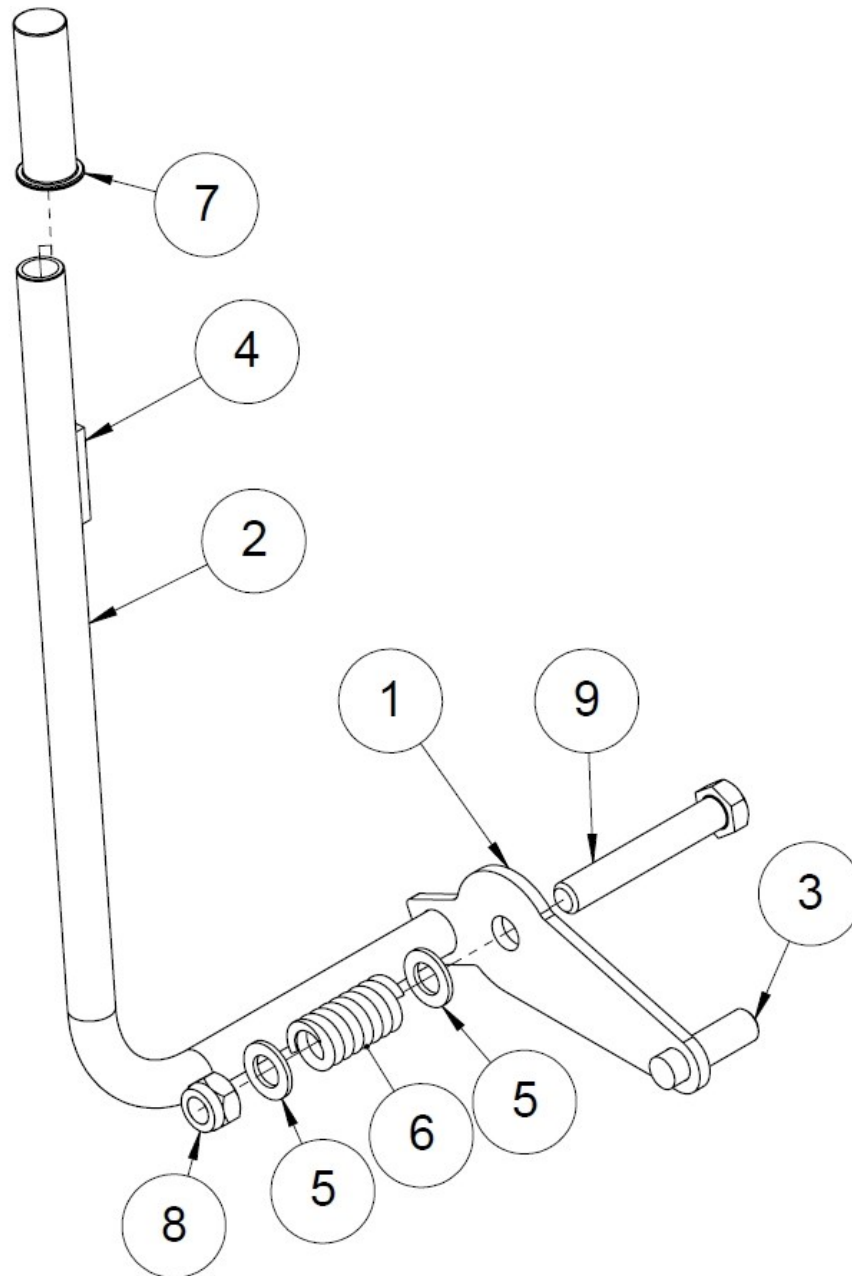




## 1.5 *Parts list*

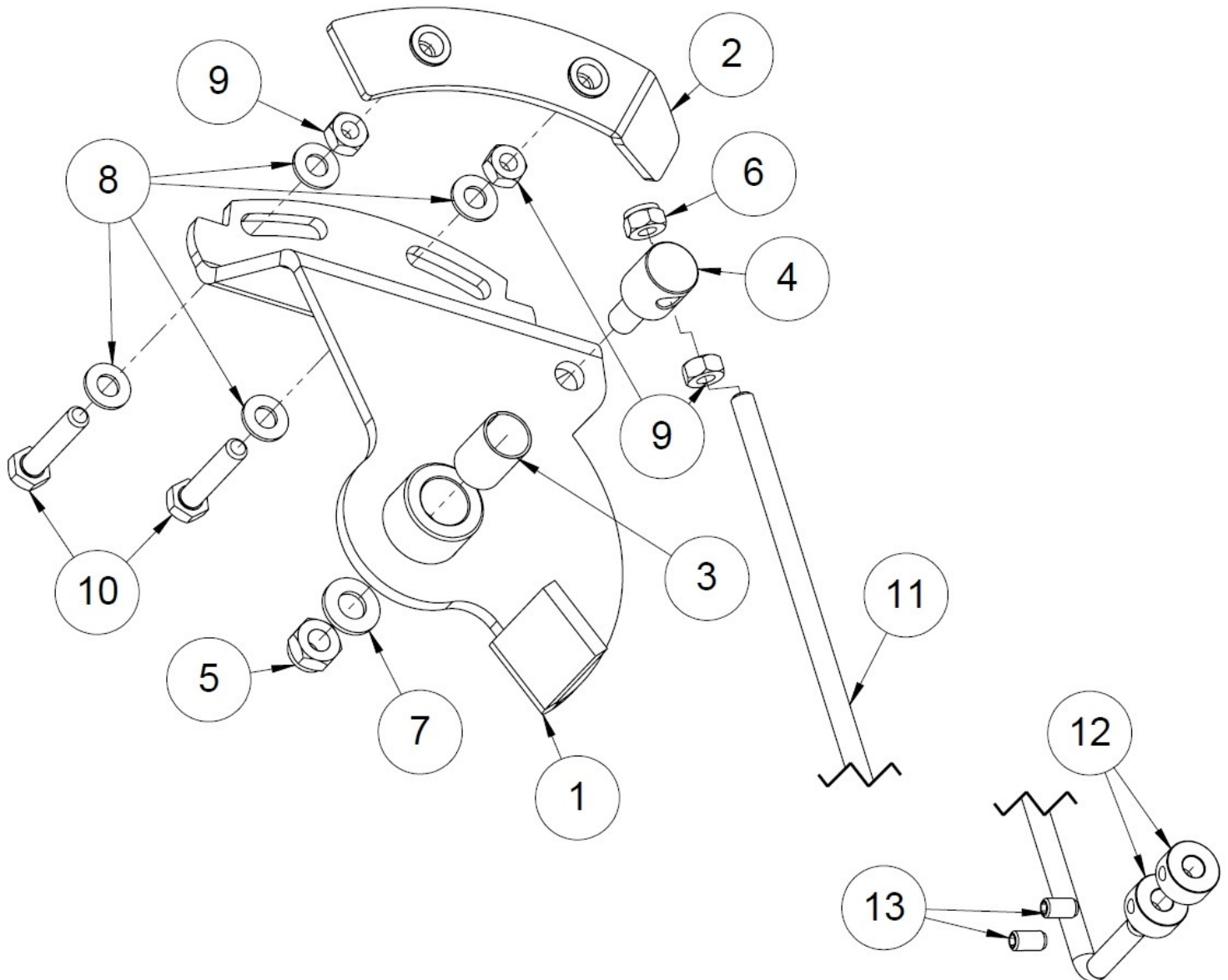
<b>No.</b>	<b>Name</b>	<b>Part number</b>	<b>Dimensions</b>	<b>Pcs</b>
15	Hex screw	96138	M10x20	4
14	Handle	95595		1
13	Lock screw	96186	M10x25	3
12	Finger guard	50012922		1
11	Hitch pin	96208		1
10	Pop rivet	96271	4.8x16.5	1
9	Chain 3 mm	95480		1
8	Locking nut	96068	M10	4
7	Hex screw	96097	M10x35	1
6	Ring pin 8 mm	96242		1
5	Extension lock	50004101	PL6 65x132.50	1
4	Washer	96049	A10	11
3	Washer	96054	A24	3
2	Wood gripper	50003671		1
1	Wood gripper fastener	50003683		1

### 1.6 Height adjustment lever of the splitting knife (50004469)



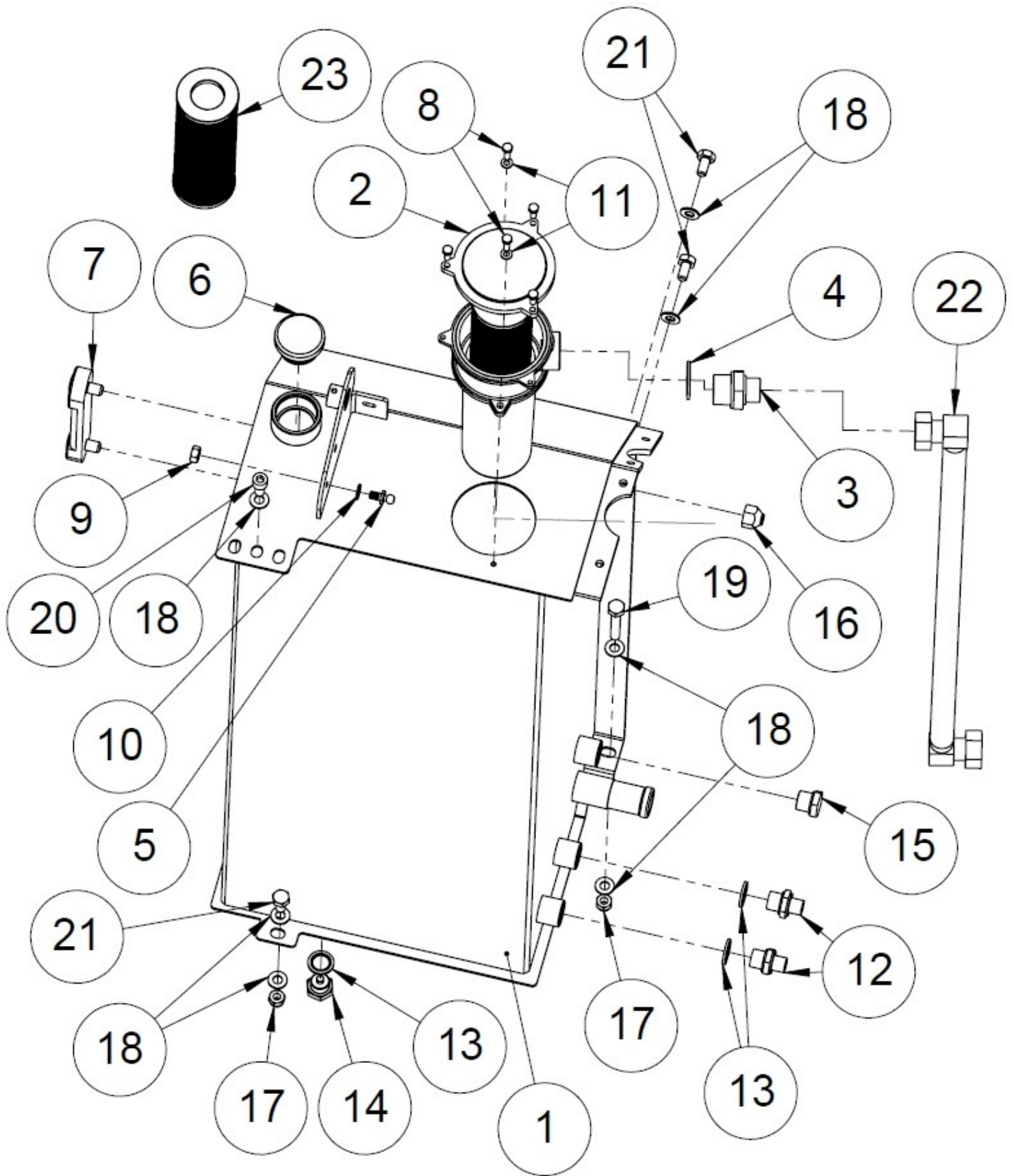
No.	Name	Part number	Dimensions	Pcs
9	Hex screw	96343	M24x150	1
8	Locking nut	96214	M24	1
7	<b>Sheath</b>	95648	32 mm	1
6	Pressure spring	95646		1
5	Washer	96054	A24	2
4	Knife adjustment stopper	10517	10x10xL=75	1
3	Pin for knife adjustment lever	08067a	∅25 L=85	1
2	Operating lever	50004146	∅33.70x4 L=	1
1	Rocker	50004136		1

## 1.7 Splitter return mechanism (50009805)



No.	Name	Part number	Dimensions	Pcs
13	Clamping screw	96362	M6x8	2
12	Stopper	50009248	∅	2
11	Safety rod	50002889	∅8	1
10	Hex screw	96167	M8x40	2
9	Hex nut	96196	M8	3
8	Washer	96061	A8	4
7	Washer	96049	A10	1
6	Locking nut	96222	M8	1
5	Locking nut	96068	M10	1
4	Joint nipple	50006075	∅20 L=44	1
3	Slide bearing	95064	B 18x16x25	1
2	Return mechanism component assembly	50016014		1
1	Lock	50011657		1

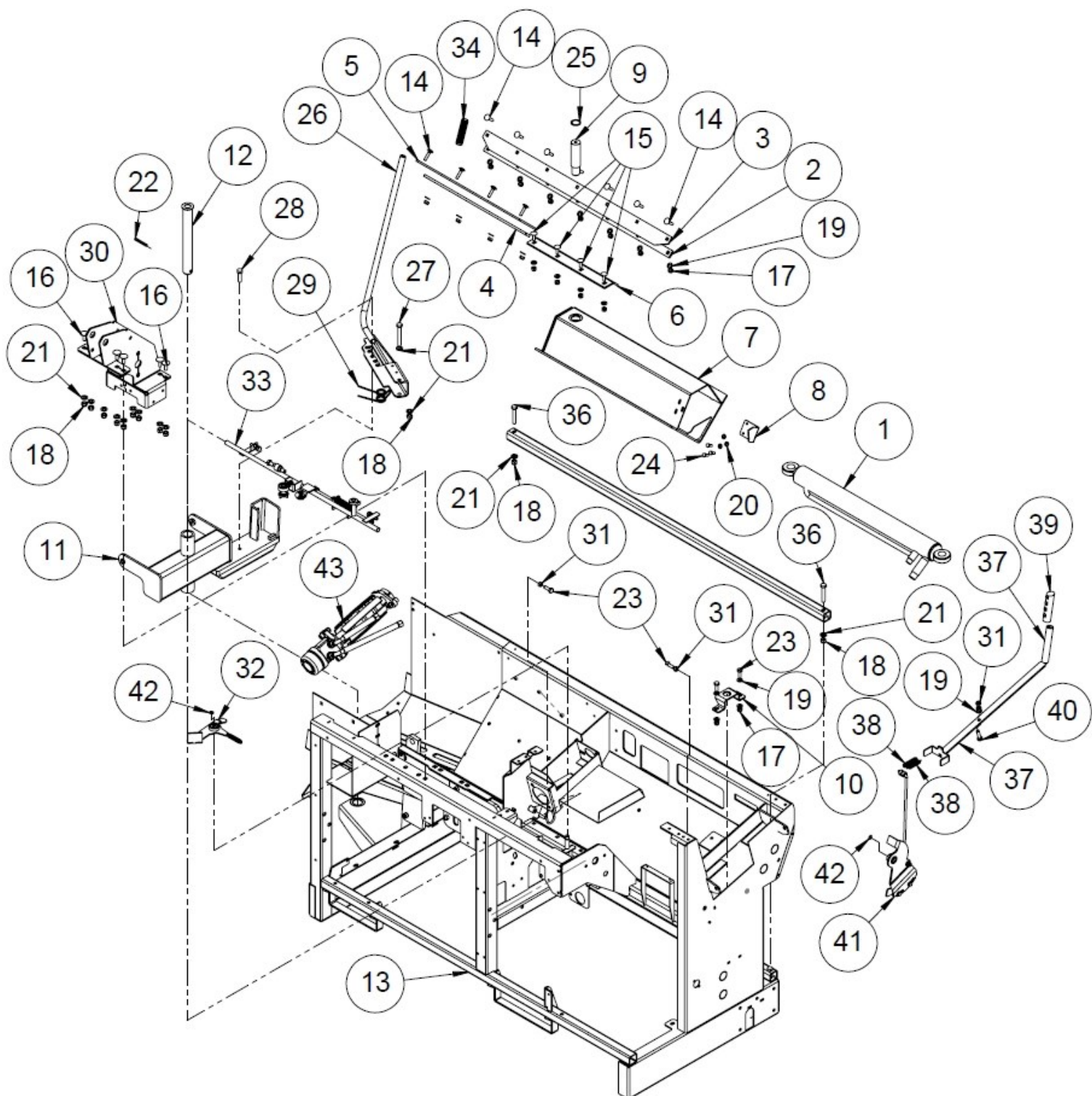
1.8 Oil tank (50009983)



## 1.9 Oil tank parts list

No.	Name	Part number	Dimensions	Pcs
23	Filter insert	97348		1
22	Hydraulic hose	97031	800 x ¾"	1
21	Hex screw	96138	M10x20	3
20	Hex socket screw	96022	M10x20	1
19	Hex screw	96100	M10x60	1
18	Washer	96049	A10	7
17	Locking nut	96068	M10	2
16	Internal thread plug	97376	Ø22 3/8"	1
15	External thread plug	97261	½"	1
14	Base plug with a magnet	97399	½"	1
13	USIT	97213	½"	3
12	Double nipple, straight	97203	3/8" x ½"	2
11	Washer	96060	A6	2
10	Washer	96061	A8	1
9	Hex nut	96199	M10	1
8	Hex screw	96135	M6x20	2
7	Oil temperature and volume gauge	97552		1
6	Filler cap	97429		1
5	Gas spring ball head	95542	M8 D10	1
4	USIT 1	97215		1
3	Double nipple, straight	97208	¾"	1
2	Filter box, incl. filter	97349		1
1	Tank	50009953		1

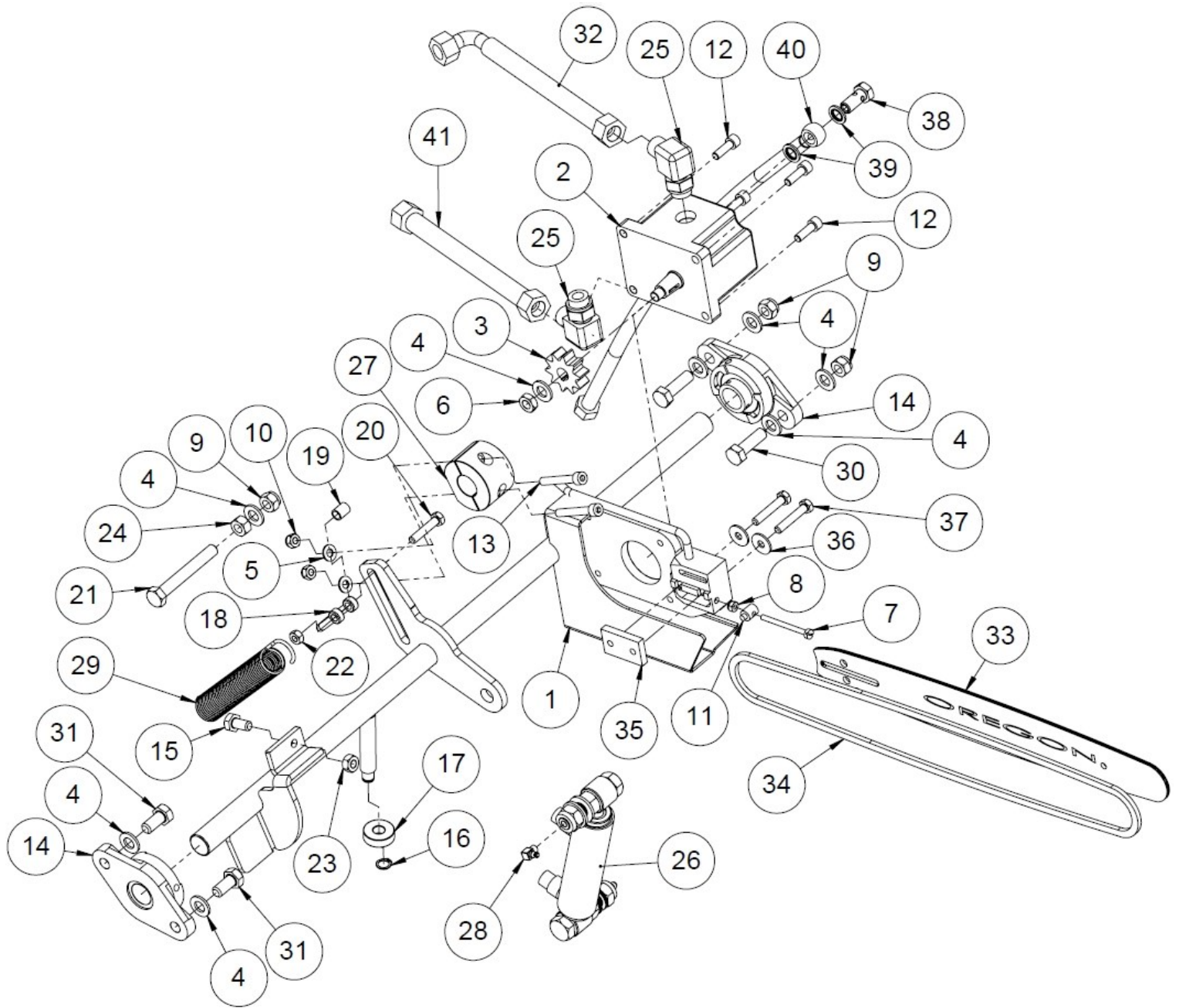
## 1.10 Frame



**1.11 Frame parts list**

<b>No.</b>	<b>Name</b>	<b>Part number</b>	<b>Dimensions</b>	<b>Pcs</b>
43	Drive roller assembly	50017534		1
42	Retaining ring	96380	12	2
41	Return plate	50009805		1
40	Hex screw	96129	M10x40	1
39	Handle	95595		1
38	Draw spring	95423		2
37	Return lever	50002587		1
36	Hex screw	96110	M12x70	2
35	Conveyor pipe	50006733	40x40x4 L=1690	1
34	Handle	95034		1
33	Splitter linkage	50010370		1
32	Trigger	50012252		1
31	Hex nut	96199	M10	4
30	Push bar and gear lugs	50010172		1
29	Double torsion spring	95432		1
28	Hex screw	96107	M12x45	1
27	Hex screw	96111	M12x90	1
26	Output conveyor stopper	50012586		1
25	Retaining ring	96240	35	1
24	Hex screw	96161	M8x20	3
23	Hex screw	96140	M10x30	4
22	Spring pin	96079	8x60	1
21	Washer	96058	A12	13
20	Washer	96061	A8	3
19	Washer	96049	A10	20
18	Locking nut	96218	M12	12
17	Locking nut	96068	M10	17
16	Lock screw	96188	M12x30	9
15	Lock screw	96387	M10x30	4
14	Lock screw	96314	M10x40	11
13	Frame	50007548		1
12	Turning device pin	50006392		1
11	Output conveyor turning device	10600		1
10	Cylinder mounting	50015863	PL5	1
9	Cylinder pin	50015810	Ø35	1
8	Trigger	50015757	PL4	1
7	Slide	50015760		1
6	Slide fastener	50015680	PL6	1
5	Slide fastener	50015679	PL6	1
4	Baffle	50015678	PL8	1
3	Slide fastener	50015673	PL6	1
2	Baffle	50015674	PL8	1
1	Cylinder	50000124		1

### 1.12 Saw drive head (50010223)

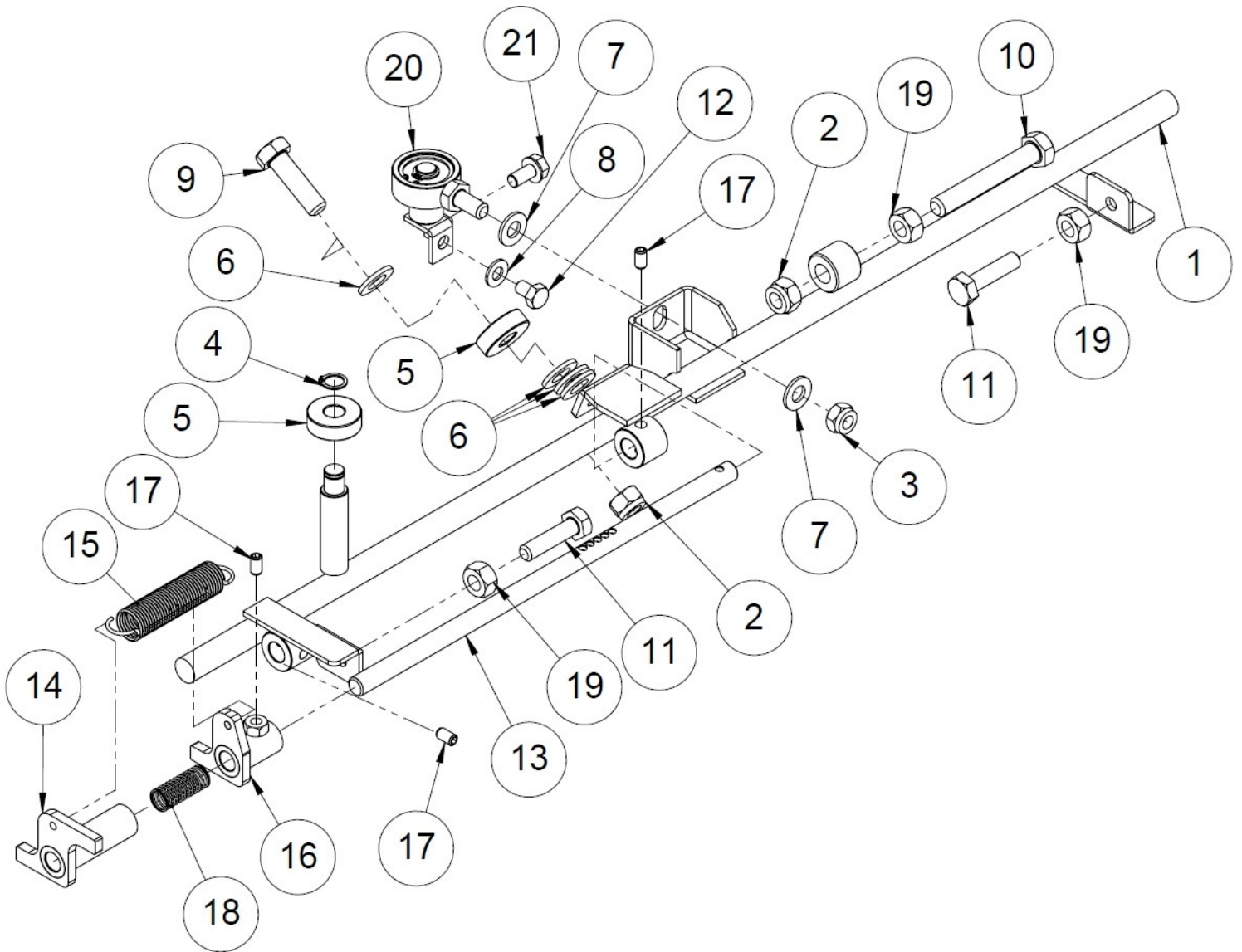




### 1.13 Saw drive head parts list

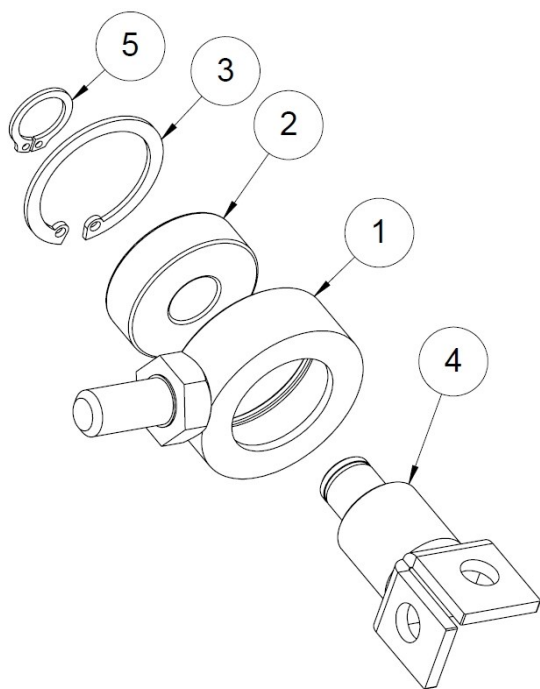
No.	Name	Part number	Dimensions	Pcs
41	Hydraulic hose 1,000 x /1/2"	97109		1
40	Hydraulic hose 1,400 x 1/4"	97168		1
39	Usit 1.4	97211		2
38	Banjo bolt 1_4	97480		1
37	Hex screw	96290	M8x45	2
36	Washer	96085	M8	2
35	Fastening rod for the saw bar	10044	8x30L=50	1
34	Saw chain, 66 loops (0.325"/1.5mm)	95148		1
33	Saw bar, 16 inches	95147		1
32	Hydraulic, 1,500 mm	97058		1
31	Hex screw	96405	M12x25	2
30	Hex screw	96148	M12x40	2
29	Draw spring (zincd 3.5x30x180)	95403		1
28	Lubrication nipple M8x1 90 GR	96275		1
27	Support bearing	50010215	Ø60 L=	1
26	Cutting cylinder	50016295		1
25	Directional corner nipple 1.2	97250		2
24	Hex nut	96200	M12	1
23	Hex nut	96199	M10	1
22	Hex nut	96196	M8	1
21	Hex screw	96111	M12x90	1
20	Hex screw	96123	M8x40	1
19	Shackle bushing	50016647	Ø12x Ø9 L=15mm	1
18	Shackle	96408		1
17	Bearing 6201	95567		1
16	Retaining ring	96380	12	1
15	Hex screw	96066	M10x20	1
14	UC 205 Bearing	95318		2
13	Hex socket screw	96308	M8x55	2
12	Hex socket screw	96035	M8x25	4
11	Bar tightening pin	10046	Ø12 L=18.5	1
10	Locking nut	96222	M8	2
9	Locking nut	96218	M12	3
8	Locking nut	96221	M6	1
7	Slothead screw	96266	M6x60	1
6	Hex nut	96206	M12	1
5	Washer	96061	A8	2
4	Washer	96058	A12	8
3	Drive wheel	37336	325-10	1
2	Saw motor	97820	4.8ccm, DH	1
1	Drive head	50010204		1

### 1.14 Splitting mechanism (50010370)



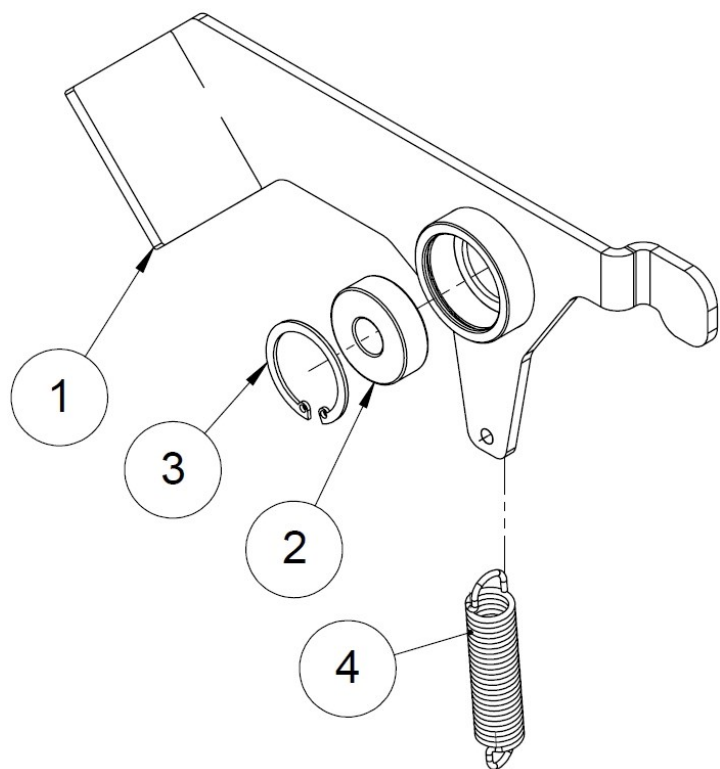
No.	Name	Part number	Dimensions	Pcs
21	Flange bolt M8x16	96172		1
20	Operating lever	50012229		1
19	Hex nut	96200	M12	3
18	Pressure spring 12x1x35	50016002		1
17	Clamping screw	96227	M8x12	3
16	Adjustment sleeve	50013755		1
15	Draw spring 2x20x100	95390		1
14	Sliding sleeve	50013745		1
13	Sliding rod	50013742	Ø12 L=310	1
12	Hex screw	96160	M8x12	1
11	Hex screw	96129	M10x40	2
10	Hex screw	96151	M12x80	1
9	Hex screw	96148	M12x40	1
8	Washer	96061	A8	1
7	Washer	96049	A10	2
6	Washer	96058	A12	4
5	Bearing 6201	95567		2
4	Retaining ring	96380	12	1
3	Locking nut	96068	M10	1
2	Locking nut	96218	M12	2
1	Operating rod	50010366		1

### 1.15 Operating lever (50012229)



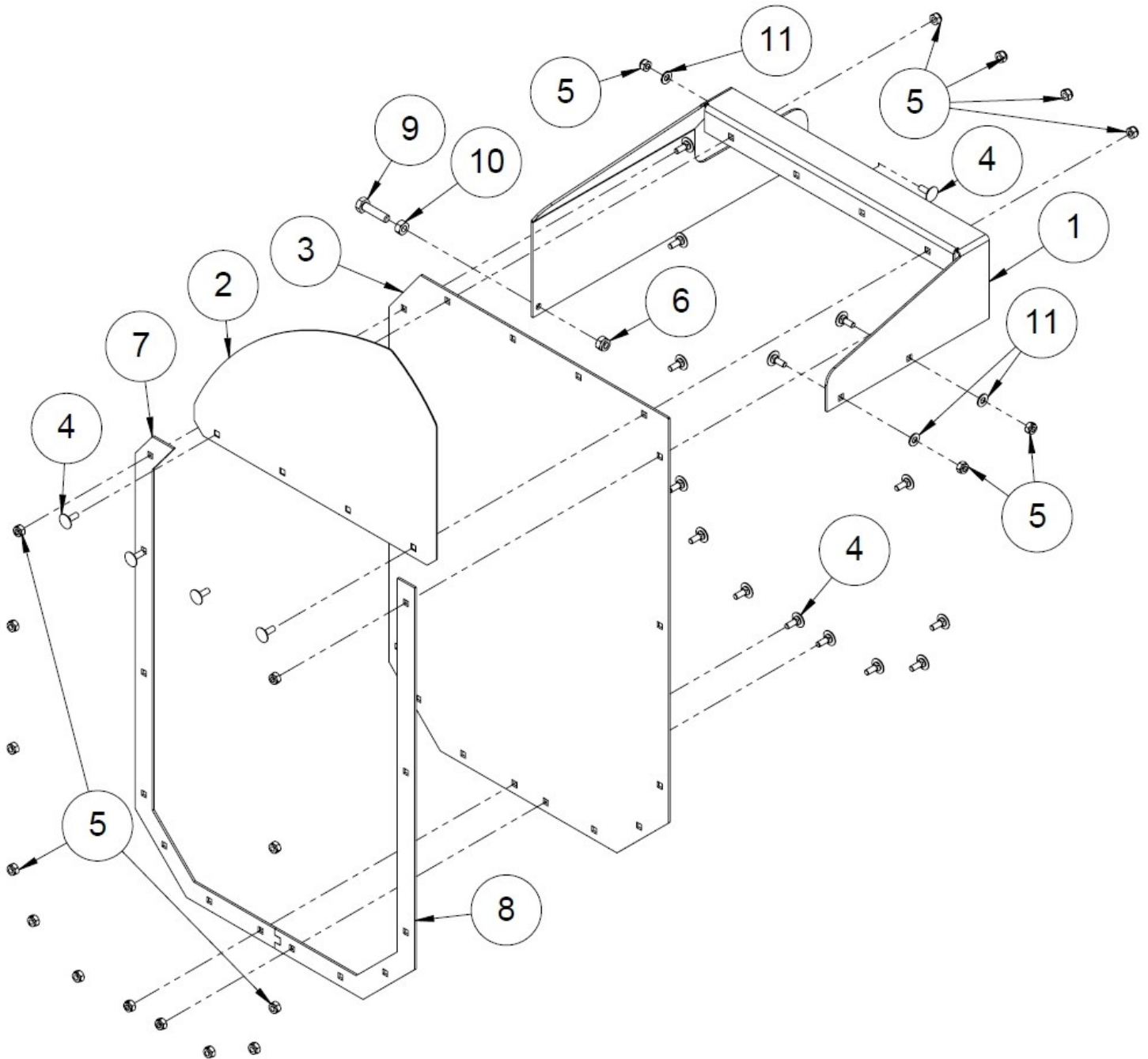
No.	Name	Part number	Dimensions	Pcs
5	Retaining ring	96380	12	1
4	Bearing fastener	50010885		1
3	Retaining ring	96390	32	1
2	Bearing 6201	95567		1
1	Operating rod for the valve	50012225		1

### 1.16 Splitting mechanism trigger (50012252)



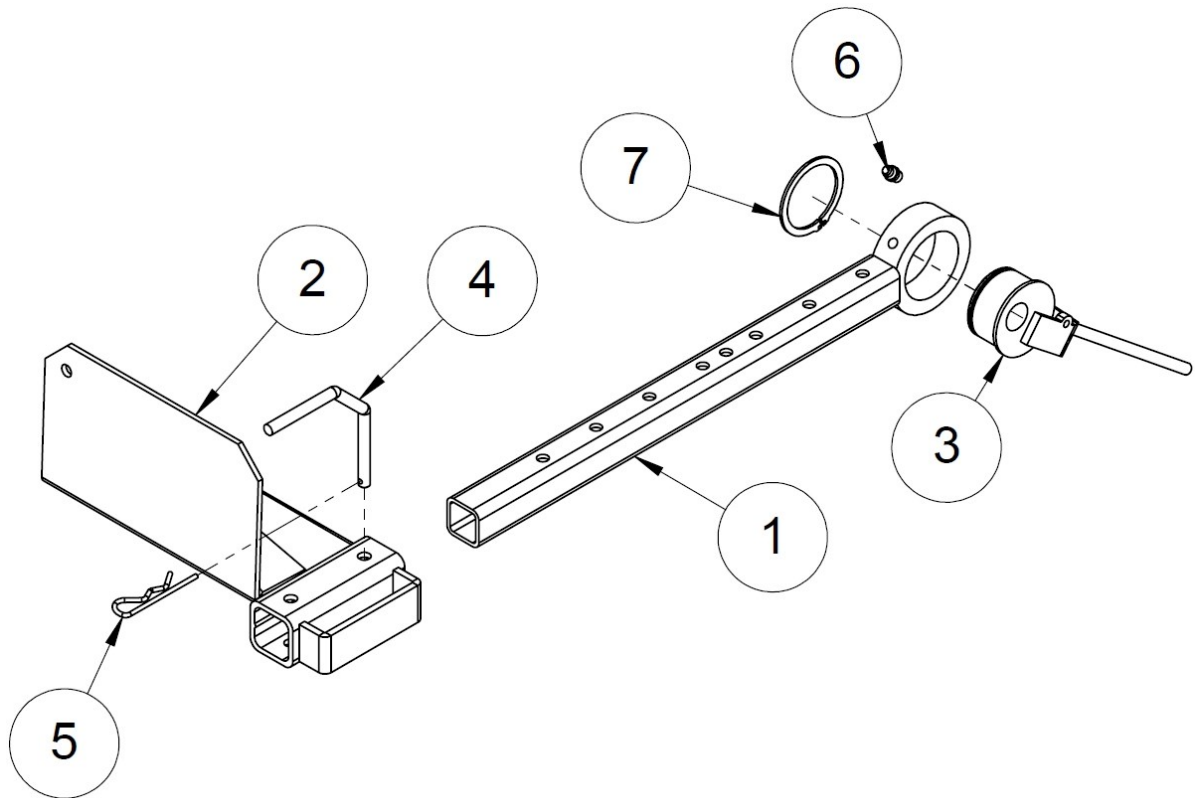
No.	Name	Part number	Pcs
4	Draw spring	95423	1
3	Retaining ring	96390	1
2	Bearing 6201	95567	1
1	Trigger lever	50010881	1

### 1.17 Splitting end guard (50013269)

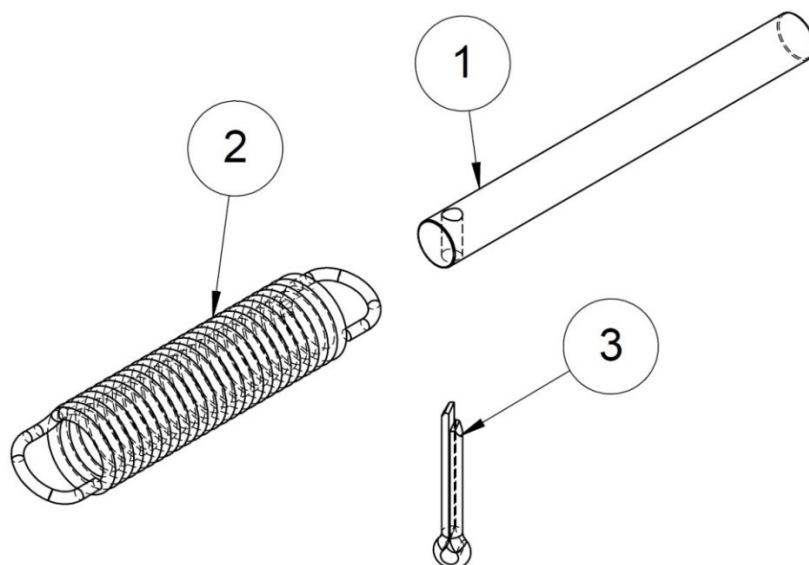


No.	Name	Part number	Dimensions	Pcs
11	Washer	96061	A8	3
10	Hex nut	96199	M10	1
9	Hex screw	96129_	M10x40	1
8	Protective strip	50015652	PL3 x	1
7	Protective mat strip	50015651	PL3 x	1
6	Locking nut	96068	M10	1
5	Locking nut	96222	M8	20
4	Lock screw	96187	M8x20	20
3	Protective strip	50013274	PL3 490x670	1
2	Upper cover for splitting	37614	PL1.50x295x425	1
1	Splitting guard fastener	50013268	PL3 x	1

### 1.18 Wood measuring device (50016021)

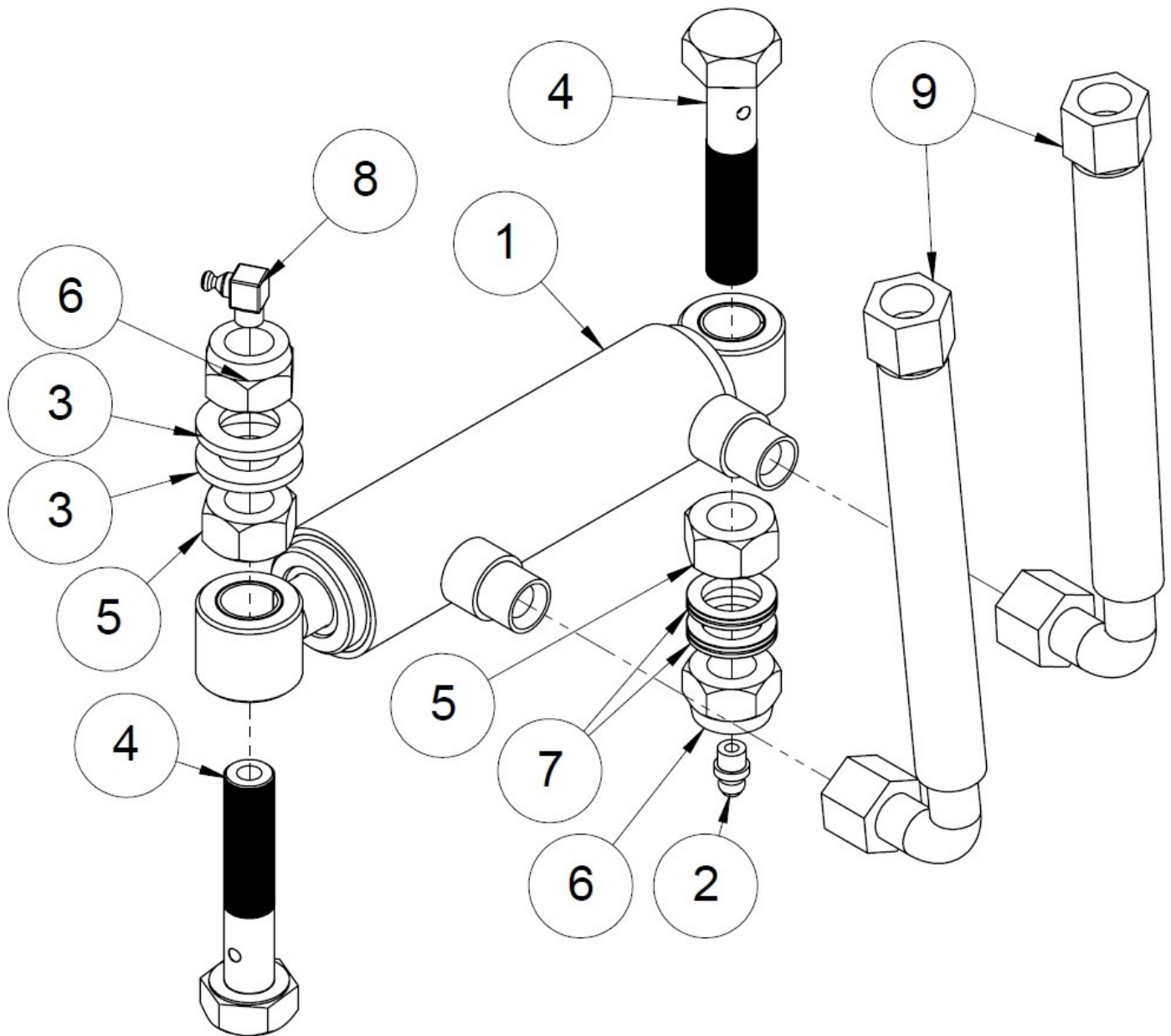


No.	Name	Part number	Pcs
7	Retaining ring	96046	1
6	Lubrication nipple M8X1	96276	1
5	Hitch pin	96208	1
4	Locking pin	10065	1
3	Eccentric flange	37562	1
2	Log length limiter	10063	1
1	Limiter pipe	50016020	1



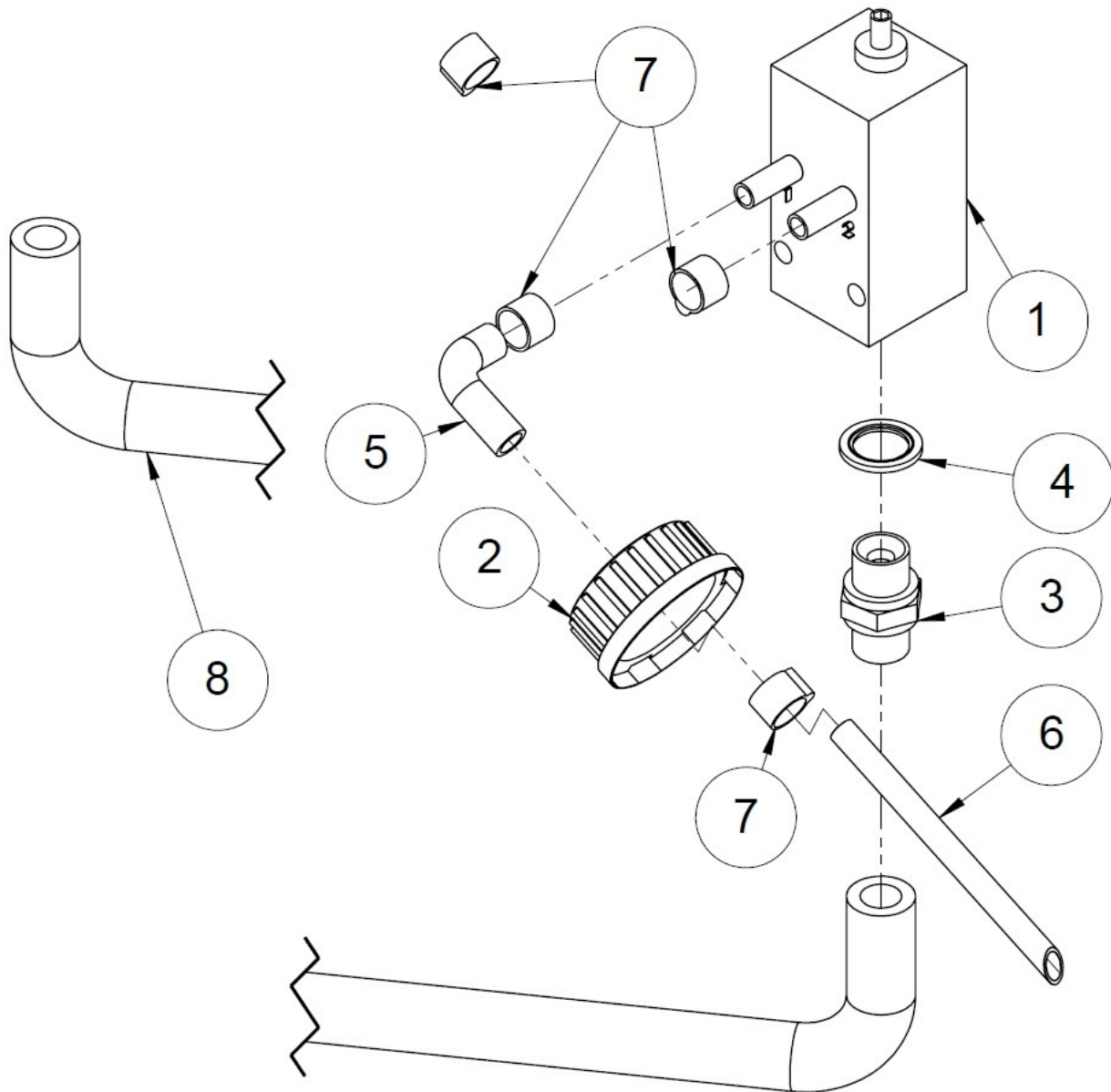
No.	Name	Part number	Dimensions	Pcs
3	Split pin	96245	3.2x20	1
2	Draw spring	95423		1
1	Stopper	50016016	Ø8 L=	1

### 1.19 Splitting mechanism cylinder (50016295)



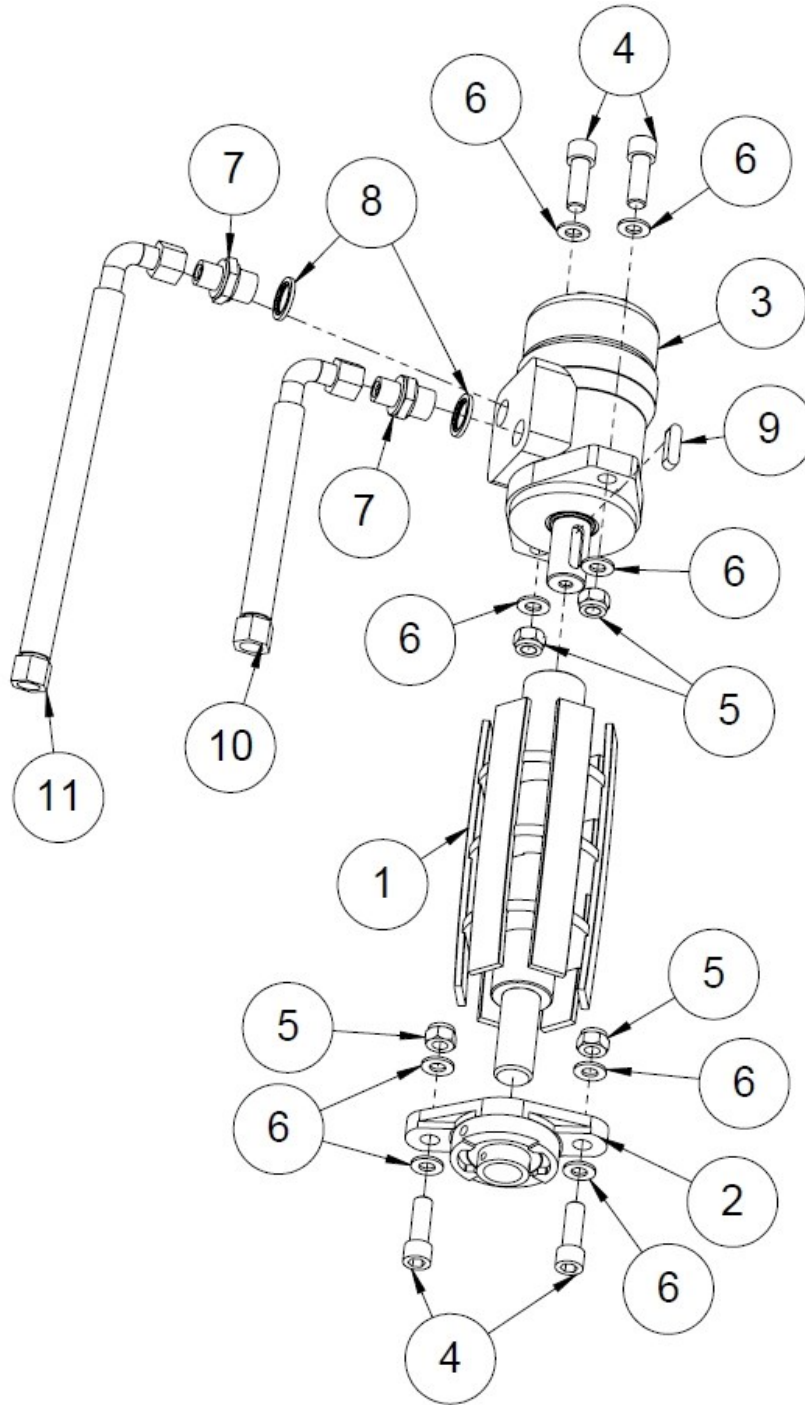
No.	Name	Part number	Dimensions	Pcs
9	Hydraulic hose	97058	1,100x3/8"	2
8	Lubrication nipple	96275	M8x1 90 GR	1
7	Lock washer M16	96412	Nordlock	2
6	Locking nut	96219	M16	2
5	Hex nut	96195	M16	2
4	Hex screw	37550	M16	2
3	Washer	96059	A16	2
2	Lubrication nipple	96276	M8x1	1
1	Cylinder	10242		1

## 1.20 Saw chain lubrication pump (50016796)



No.	Name	Part number	Dimensions	Pcs
8	Hose	96167	1,900x1/4"	1
7	Hose binder 10	96174		4
6	Saw chain oil suction pipe	50014496	Ø8x1 L=100	1
5	ToppFlex PUR hose 8/11	95606	1 x 700 mm and 1 x 900 mm	2
4	3/8" USIT	97212		1
3	Choke nipple 1 mm, straight	97276	3/8", 3/8"	1
2	Oil cap	95644		1
1	T oil adjuster	97848		1

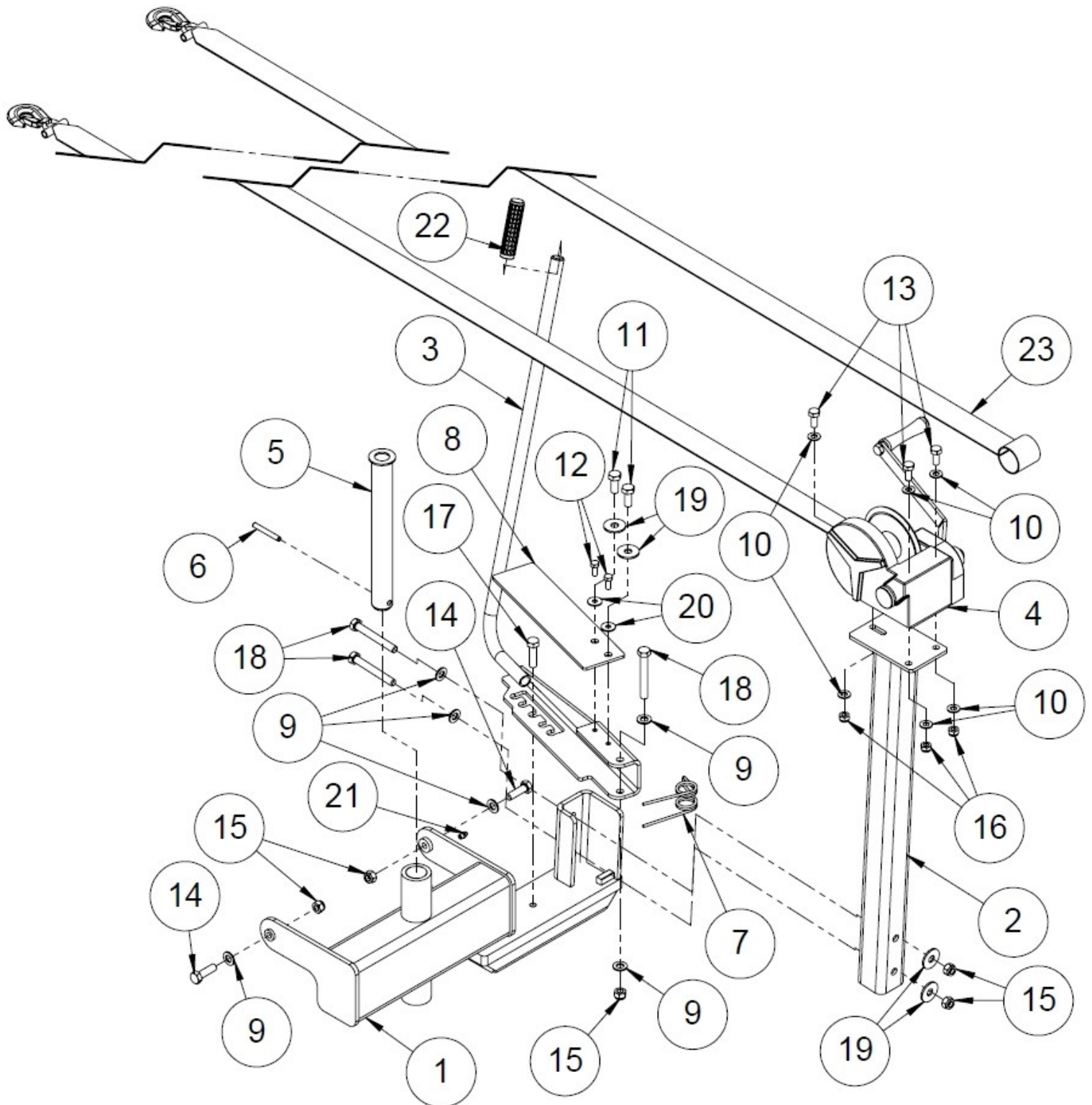
### 1.21 Input conveyor drive roller assembly (50017534)



No.	Name	Part number	Dimensions	Pcs
11	Hydraulic hose	97045	1,600 x3/8"	1
10	Hydraulic hose	97008	700 x3/8"	1
9	Wedge	97371		1
8	USIT ½"	97213		2
7	Double nipple, straight	97203	3/8"x1/2"	2
6	Washer	96049	A10	8
5	Locking nut	96218	M12	4
4	Hex socket screw	96413	M12x35	4
3	Hydraulic motor	97308	MSEPM-200	1
2	Bearing, UC 205	95318		1
1	Input conveyor drive roller	50000467		1



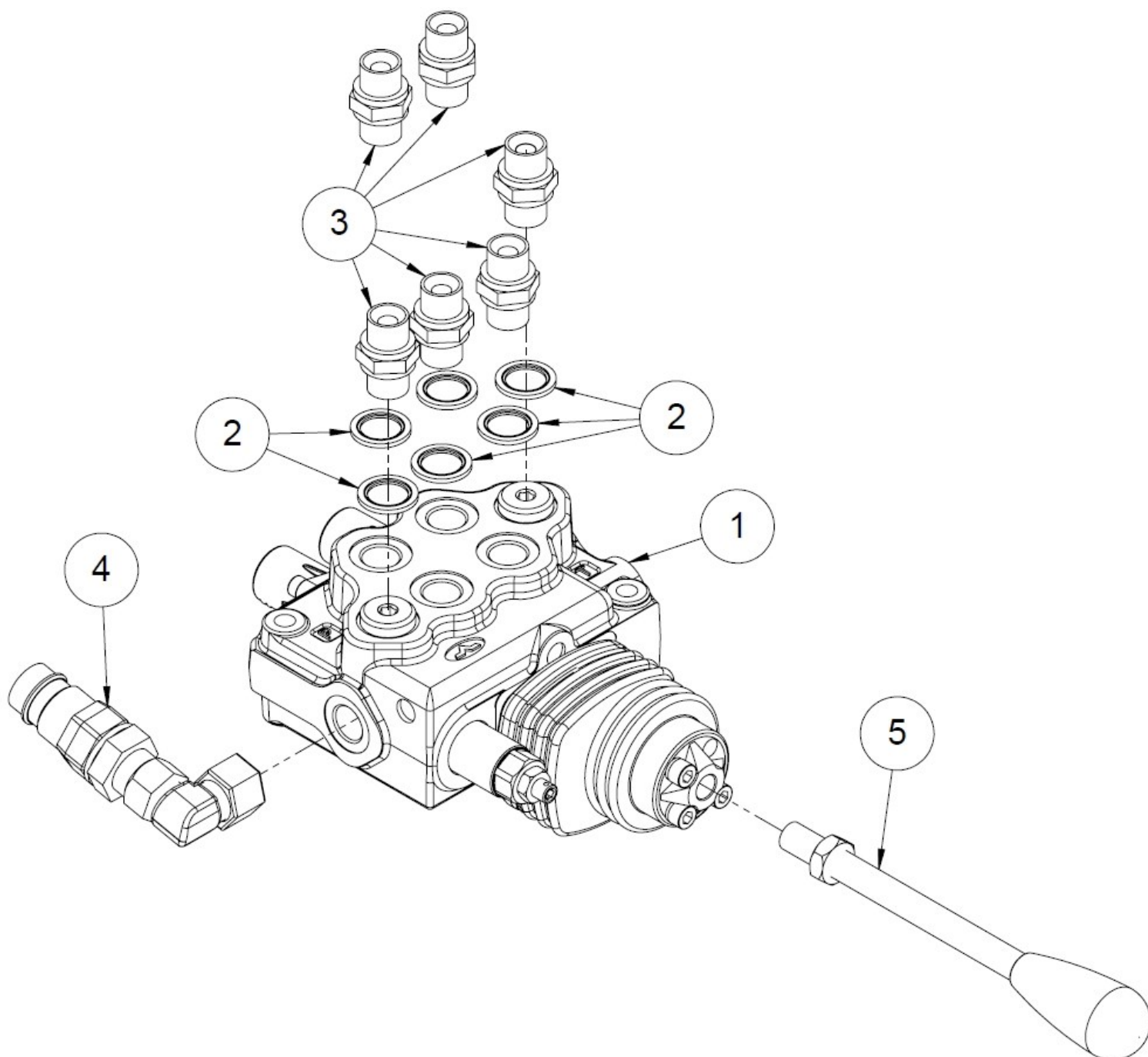
### 1.22 Output conveyor turning device (50017575)



### 1.23 Turning device (50017575) parts list

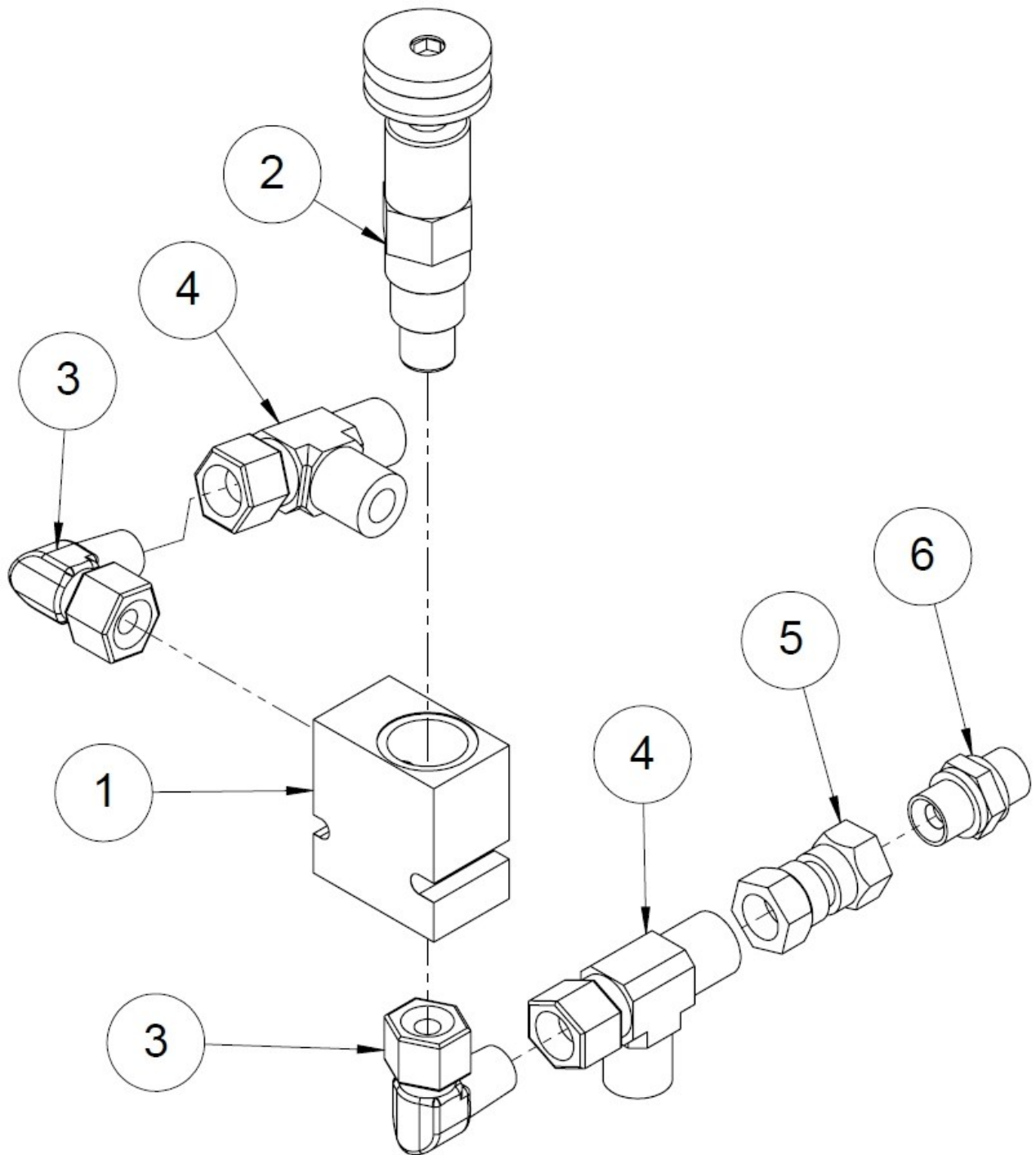
No.	Name	Part number	Dimensions	Pcs
23	Winch strap with hook	95068		1
22	Handle	95034		1
21	Lubrication nipple	96276	M8x1	1
20	Washer	96085	M8 3/2015-->	2
19	Washer	96340	M12	4
18	Hex screw	96111	M12x90	3
17	Hex screw	96107	M12x45	1
16	Locking nut	96068	M10	3
15	Locking nut	96218	M12	5
14	Hex screw	96148	M12x40	2
13	Hex screw	96139	M10x25	3
12	Hex screw	96161	M8x20 3/2015-->	2
11	Hex screw	96146	M12x30	2
10	Washer	96049	A10	6
9	Washer	96058	A12	6
8	Splinter guard	50012933		1
7	Double torsion spring	95432		1
6	Spring pin	96079	8x60	1
5	Turning device pin	50006392		1
4	Output conveyor winch complete	37151		1
3	Output conveyor stopper	50012586		1
2	Winch fastening pipe	10825		1
1	Output conveyor turning device	10600		1

### 1.24 Control valve (50016298)



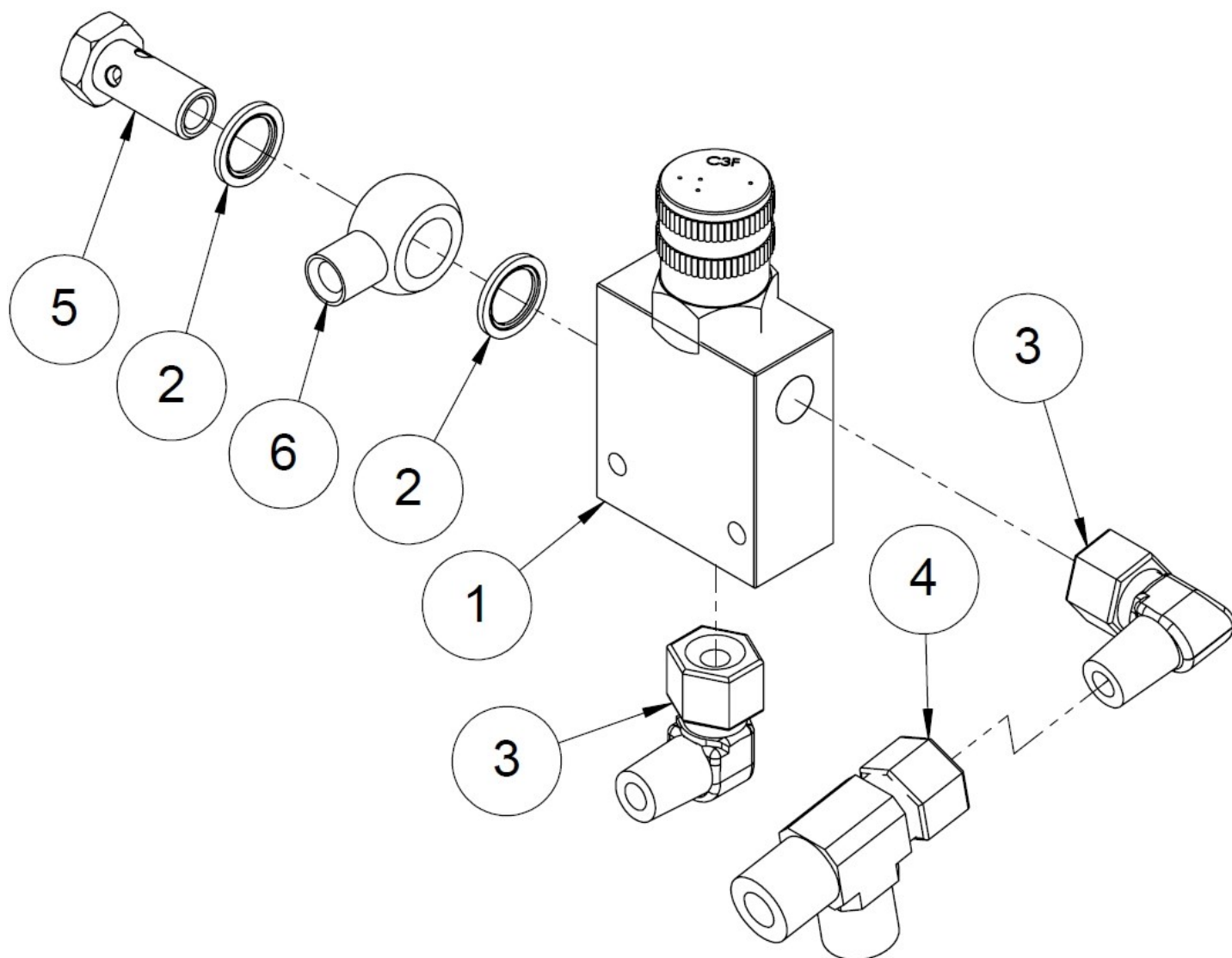
No.	Name	Part number	Pcs
5	AL08/m12*150 lever	97425	1
4	Quick coupling pack	37650	1
3	Double nipple, straight	97202	6
2	3/8" USIT	97212	6
1	Valve (lightened springs)	50017711	1

### 1.25 Pressure control valve (50016300)



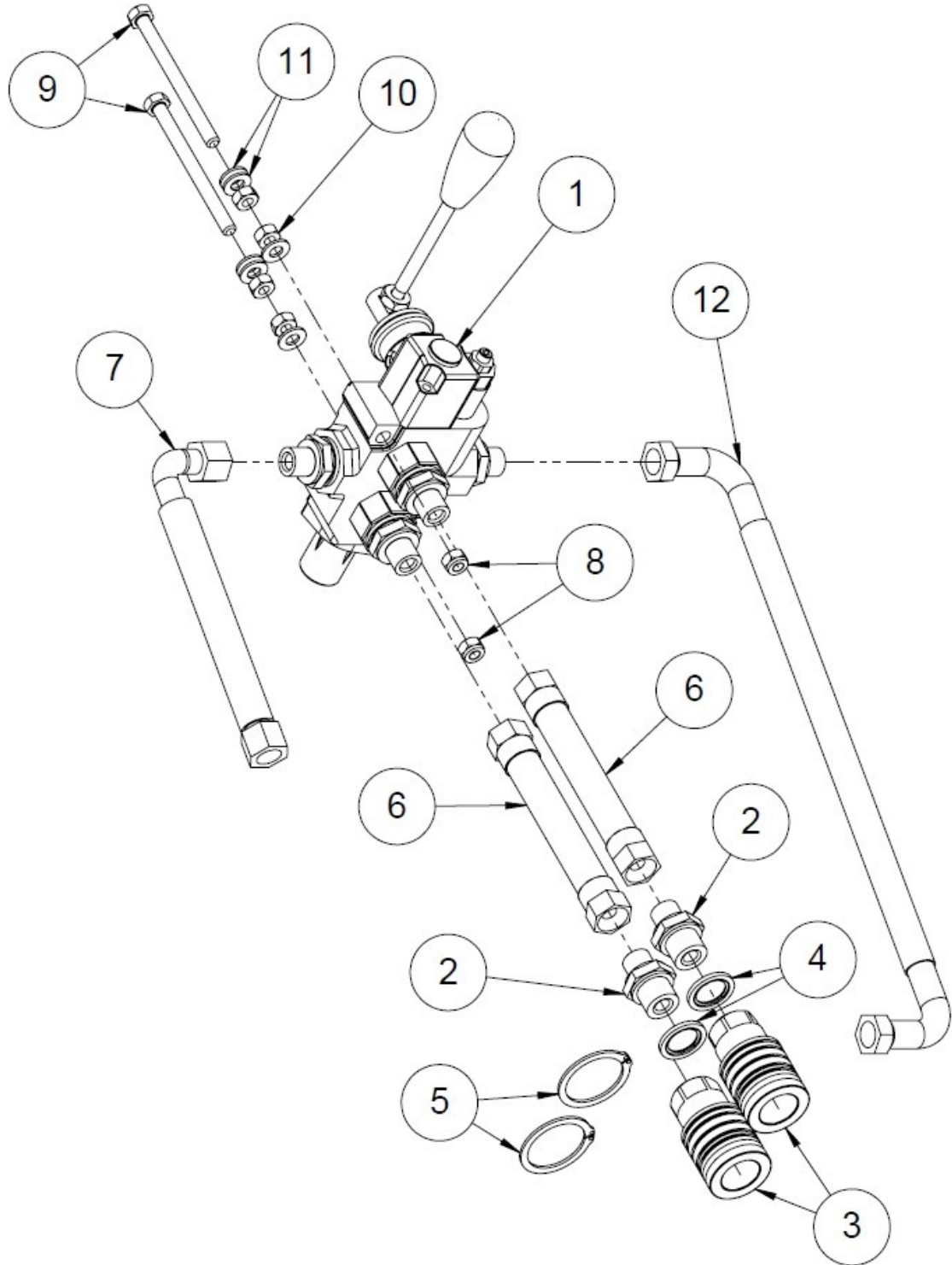
No.	Name	Part number	Pcs
6	Choke nipple 3/8", 3/8" (1.3mm)	97593	1
5	Extension nipple 3/8"	97237	1
4	T-junction 3/8"	97234	2
3	Directional corner nipple 3/8"	97250	2
2	Pressure relief cartridge	97427	1
1	Cartridge chamber	97420	1

### 1.26 Flow control valve (50016299)



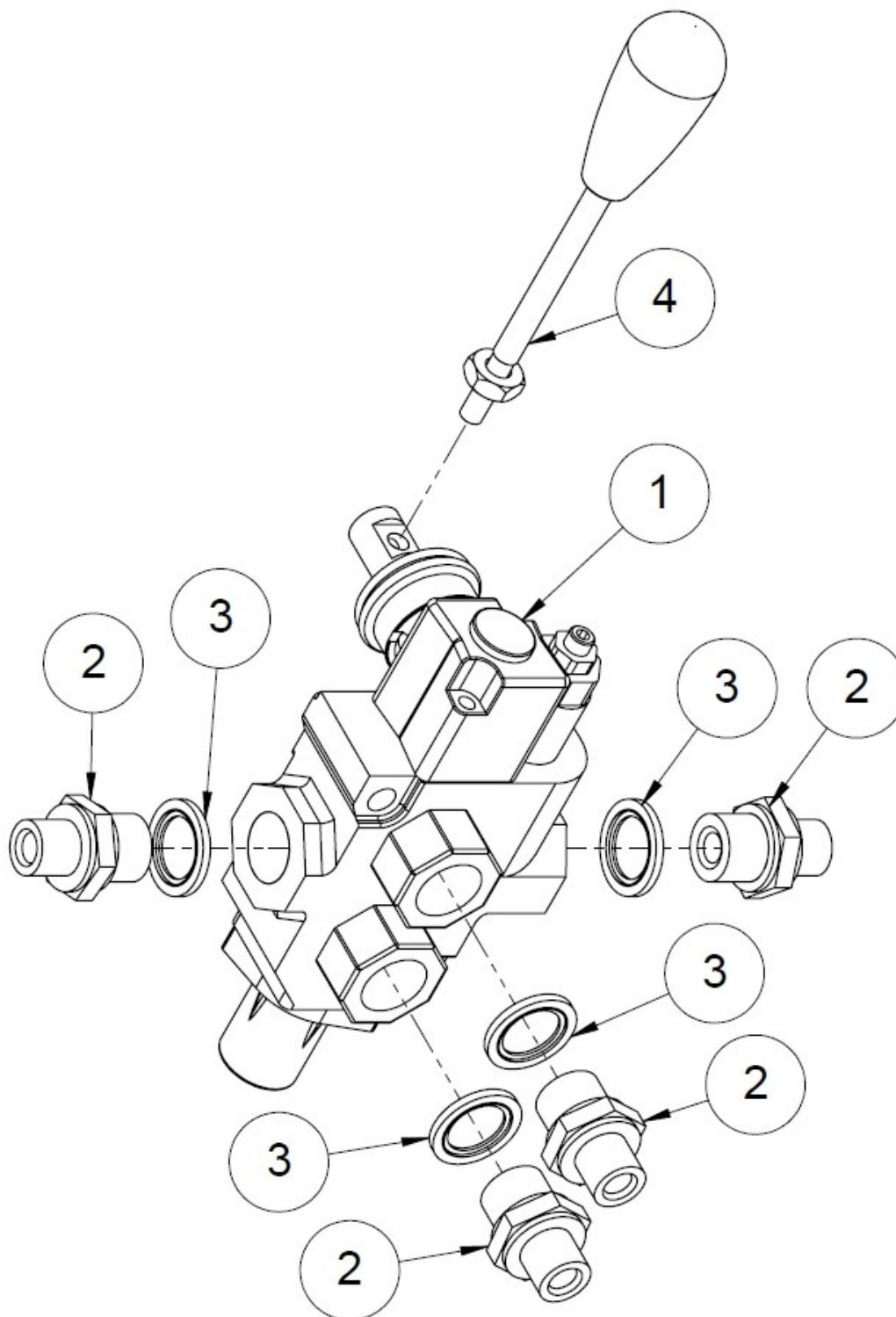
No.	Name	Part number	Pcs
6	Banjo connector 3/8"	97273	1
5	Banjo bolt BSB 3/8"	97258	1
4	T-junction (L-connector)	97234	1
3	Directional corner nipple 3/8"	97250	2
2	3/8" USIT	97212	2
1	Adjuster	97524	1

### 1.27 Auxiliary device control assembly (50016297)



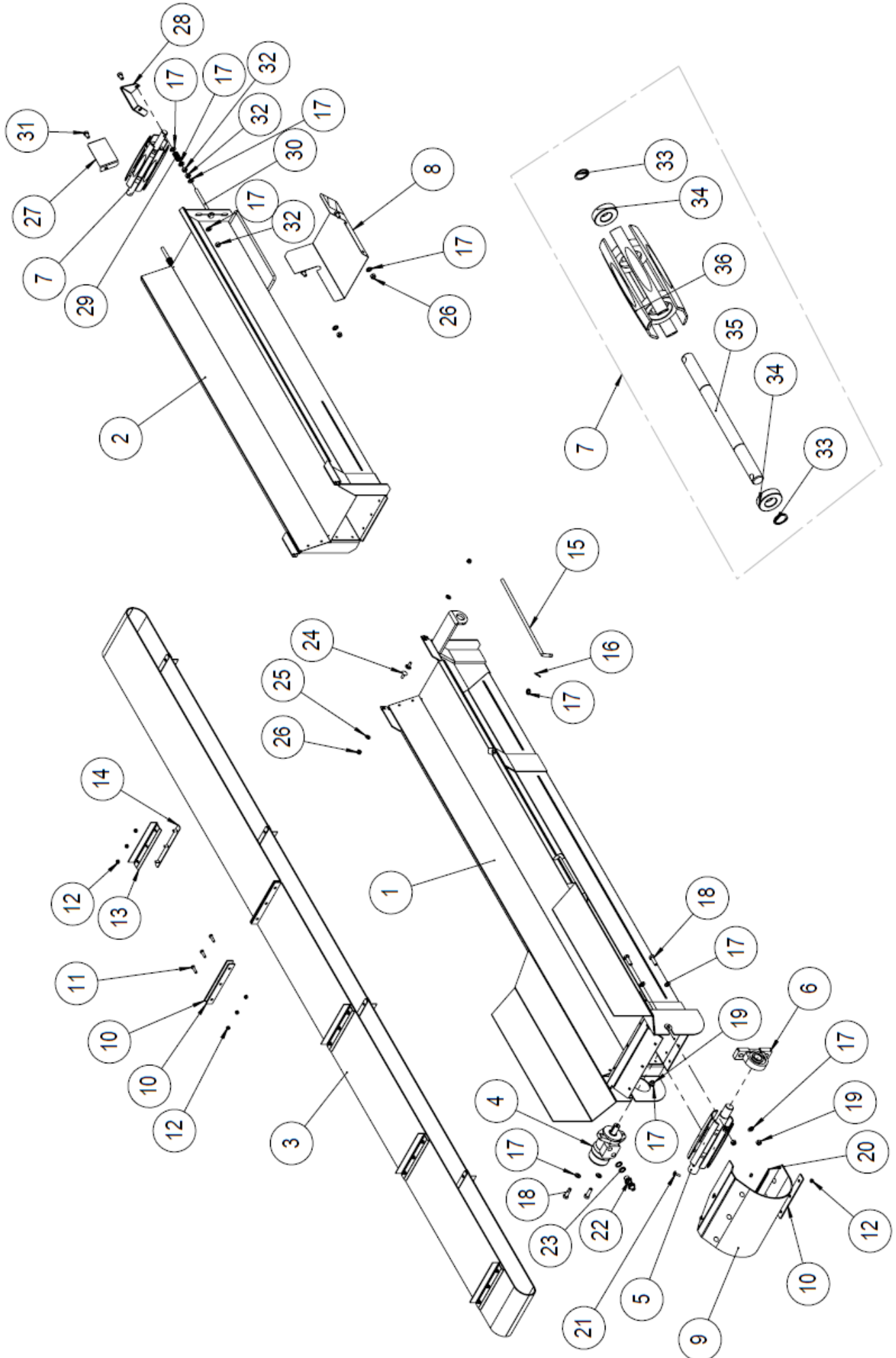
No.	Name	Part number	Dimensions	Pcs
12	Hydraulic hose	97139		1
11	Washer	96061	A8	6
10	Hex nut	96196	M8	4
9	Hex screw	96414	M8x100	2
8	Locking nut	96222	M8	2
7	Hydraulic hose	97008	700 x 3/8"	1
6	Hydraulic hose	97018	400 x 3/8"	2
5	Retaining ring	96371	38	2
4	USIT	97213	1/2"	2
3	Quick coupling, female	97388	1/2"	2
2	Double nipple, straight	97203	3/8", 1/2"	2
1	Valve	37638		1

### 1.28 Auxiliary device control valve (37638)



No.	Name	Part number	Pcs
4	Lever (AL01, M8, 120)	97423	1
3	USIT ½"	97213	4
2	Double nipple, straight 3/8" x ½"	97203	4
1	Valve	97842	1

### 1.29 Output conveyor

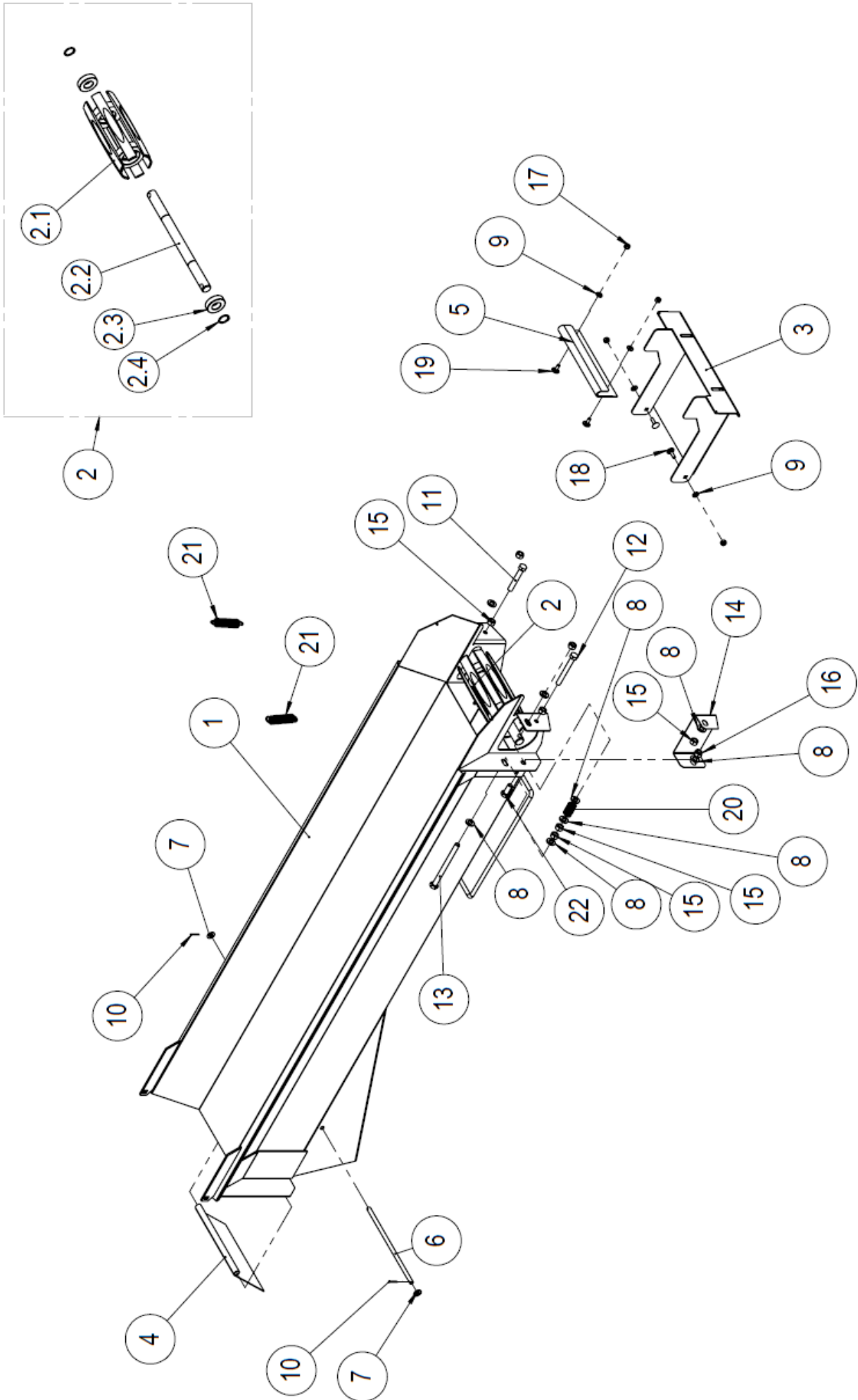




### 1.30 Output conveyor parts list

No.	Number and name of item	Pcs
1	10833 Lower frame of the conveyor	1
2	10316 Upper frame of the conveyor	1
3	10317 Conveyor belt, complete	1
4	97334 Hydraulic motor OMP-50	1
5	10817 Drive roller for the output conveyor	1
6	95058 Bearing unit UCP 207	1
7	10132 Upper roller for the conveyor	1
8	10134 Guard for the upper end of the conveyor	1
9	61162 Lower protective belt for the conveyor	1
10	10136 Connection rod for the belt	3
11	96131 Hex screw M8x30	3
12	96222 Locking nut M8	36
13	10135 Conveyor plate	8
14	10851 Plate fastening	8
15	10819 Conveyor belt holder	1
16	96246 Split pin 3.2x32	1
17	96058 Washer A12	23
18	96148 Hex screw M12x40	4
19	96218 Locking nut M12	6
20	61172 Fastening rod for the conveyor's rubber baffle	2
21	96191 Locking screw M8x25	9
22	97203 Double nipple, straight	2
23	97213 USIT	2
24	96186 Locking screw M10x25	2
25	96049 Washer A10	2
26	96068 Locking nut M10	2
27	10313 Left side plate for the upper end of the conveyor	1
28	10137 Right side plate for the upper end of the conveyor	1
29	95014 Pressure spring	2
30	96143 Hex screw M12x150	2
31	96144 Hex screw M12x20	4
32	96200 Hex nut M12	6
33	96042 Retaining ring	2
34	95050 Bearing 6205	2
35	10132b Shaft for the conveyor's upper roller	1
36	10142 Upper roller for the conveyor	1

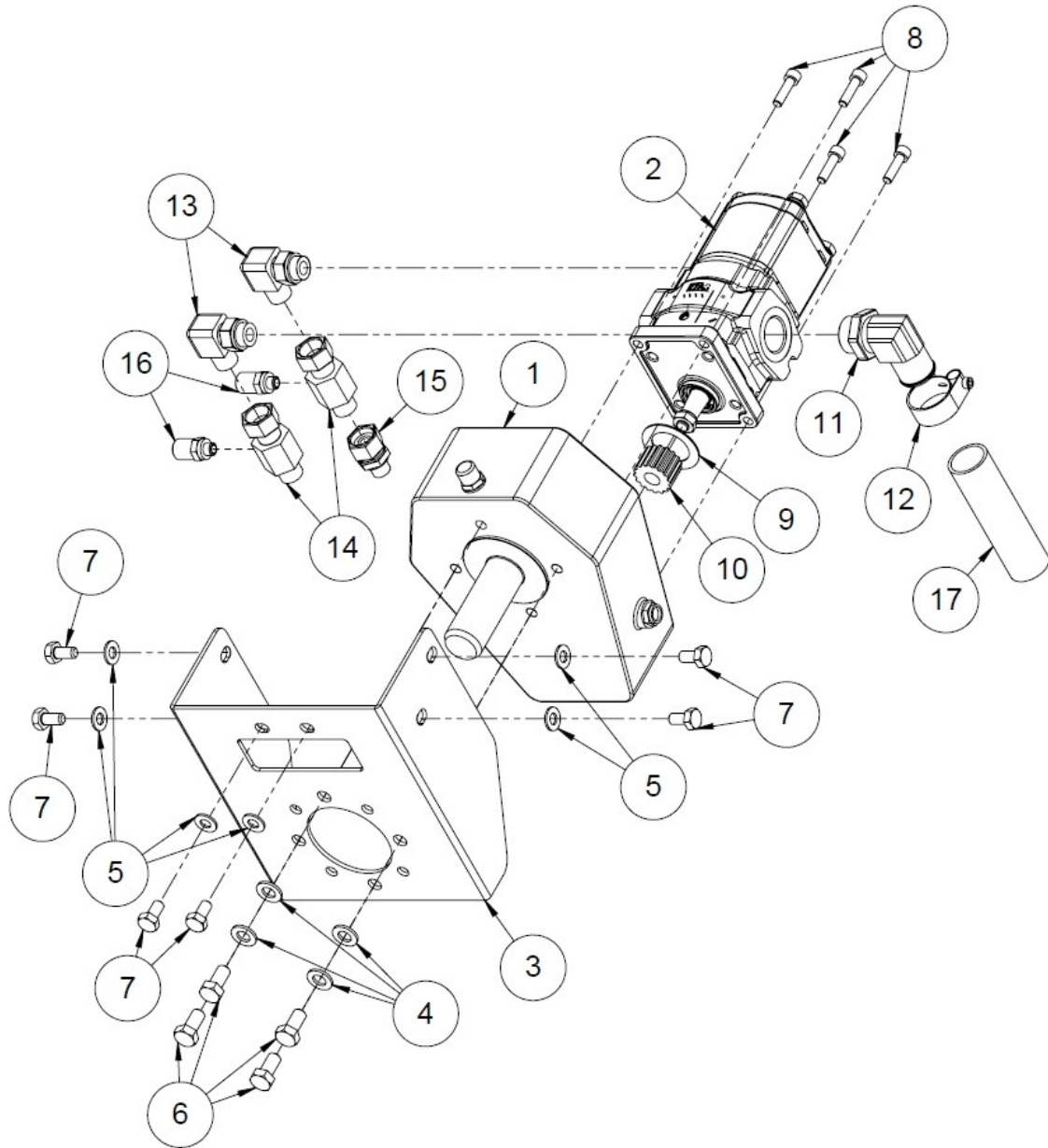
1.31 Output conveyor upper section, self-cleaning conveyor (37400)



### 1.32 Self-cleaning conveyor parts list (upper section)

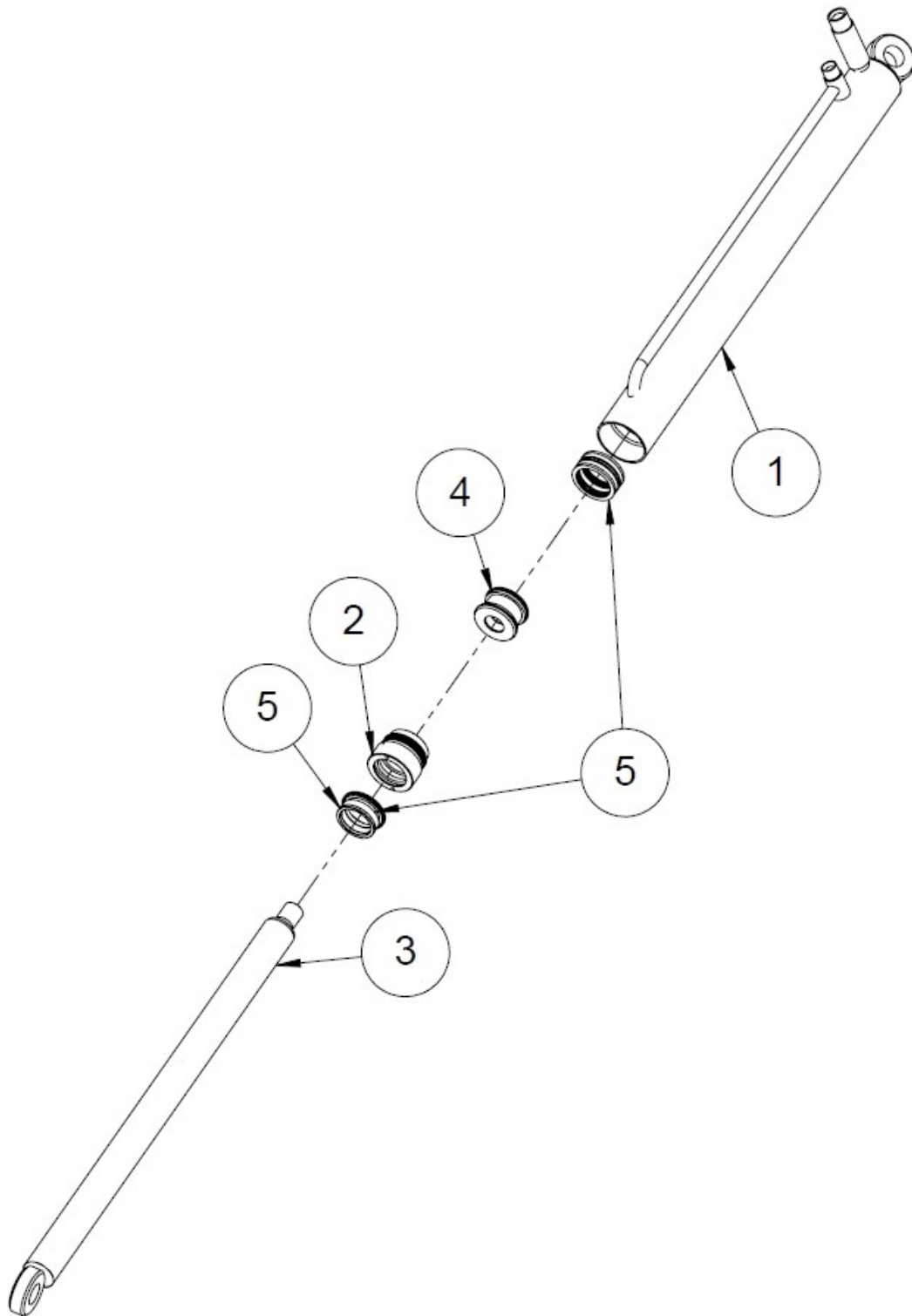
No.	Part number	Name	Pcs
1	37416	Upper frame of the conveyor	1
2	10132	Upper roller of the conveyor	1
2.1	10142	Upper roller of the conveyor	1
2.2	10132b	Shaft for the conveyor's upper roller	1
2.3	95050	Bearing 6205 2 rs	2
2.4	96042	Retaining ring 25	2
3	37413	Debris separation plate	1
4	37414	Guard plate for the debris opening	1
5	37412	Lip plate	1
6	37411	Link rod	1
7	96049	Washer DIN 125 A10	2
8	96058	Washer DIN 125 A12	14
9	96061	Washer DIN 125 A8	4
10	96244	Cotter pin DIN 94 2.5x20	2
11	96151	Hex screw DIN 933 M12x80	1
12	96141	Hex screw DIN 933 M12x100	1
13	96269	Hex screw DIN 933 M12x170	2
14	37417	Protective plate for the roller	1
15	96200	Hex nut DIN 934 M12	11
16	96218	Locking nut DIN 985 M12	1
17	96222	Locking nut DIN 985 M8	4
18	96191	Locking screw DIN 603 M8x25	2
19	96187	Locking screw DIN 603 M8x20	2
20	95014	Pressure spring 3.5x22x38	2
21	95390	Draw spring 2x20x100	2
22	96145	Hex screw DIN 933 M12x30	1

### 1.33 Hydraulic pump + multiplier gearbox (50008181)



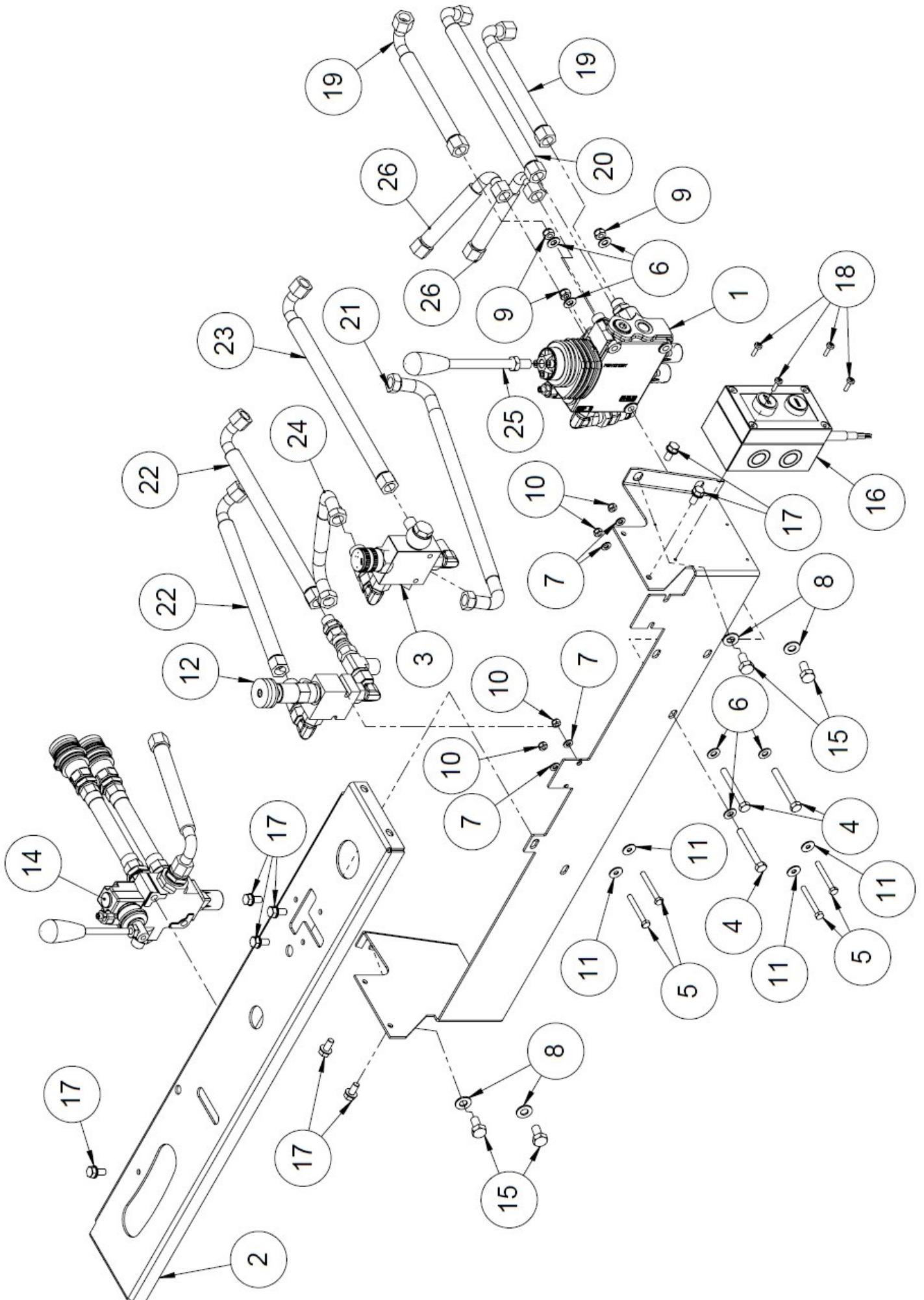
No.	Name	Part number	Dimensions	Pcs
17	Suction hose Coroil	97587	Ø32x L=950	1
16	Pressure measuring nipple	97378	¼"	2
15	Connecting nipple	97218	½" / 3/8"	1
14	Connecting nipple (pressure measuring connection)	97390	½"	2
13	Directional corner nipple	97247	½"	2
12	Steel hose clamp	97850	40-32	1
11	Suction connector	97849	1"/32 mm	1
10	Adapter sleeve	50008330		1
9	Shim	50008329		1
8	Hex socket screw	96341	M8x30	4
7	Hex screw	96138	M10x20	6
6	Hex screw	96405	M12x25	4
5	Washer	96049	A10	6
4	Washer	96058	A12	4
3	Gear mounting	50010155	PL4	1
2	Hydraulic pump (PTO model)	97846	PHP 25/PLP11	1
2	Hydraulic pump (electric model)		14/19	
1	Multiplier gearbox ML52	95607		1

### 1.34 Splitting cylinder (50000124)



No.	Name	Part number	Dimensions	Pcs
5	Seal kit	97296	D73 63-45	1
4	Plunger	10664	Ø62.4 L=40	1
3	Cylinder arm	50000123	D45	1
2	Arm control Ø73,63-45	10665	Ø68L=55	1
1	Cylinder tube 73/63	50000120		1

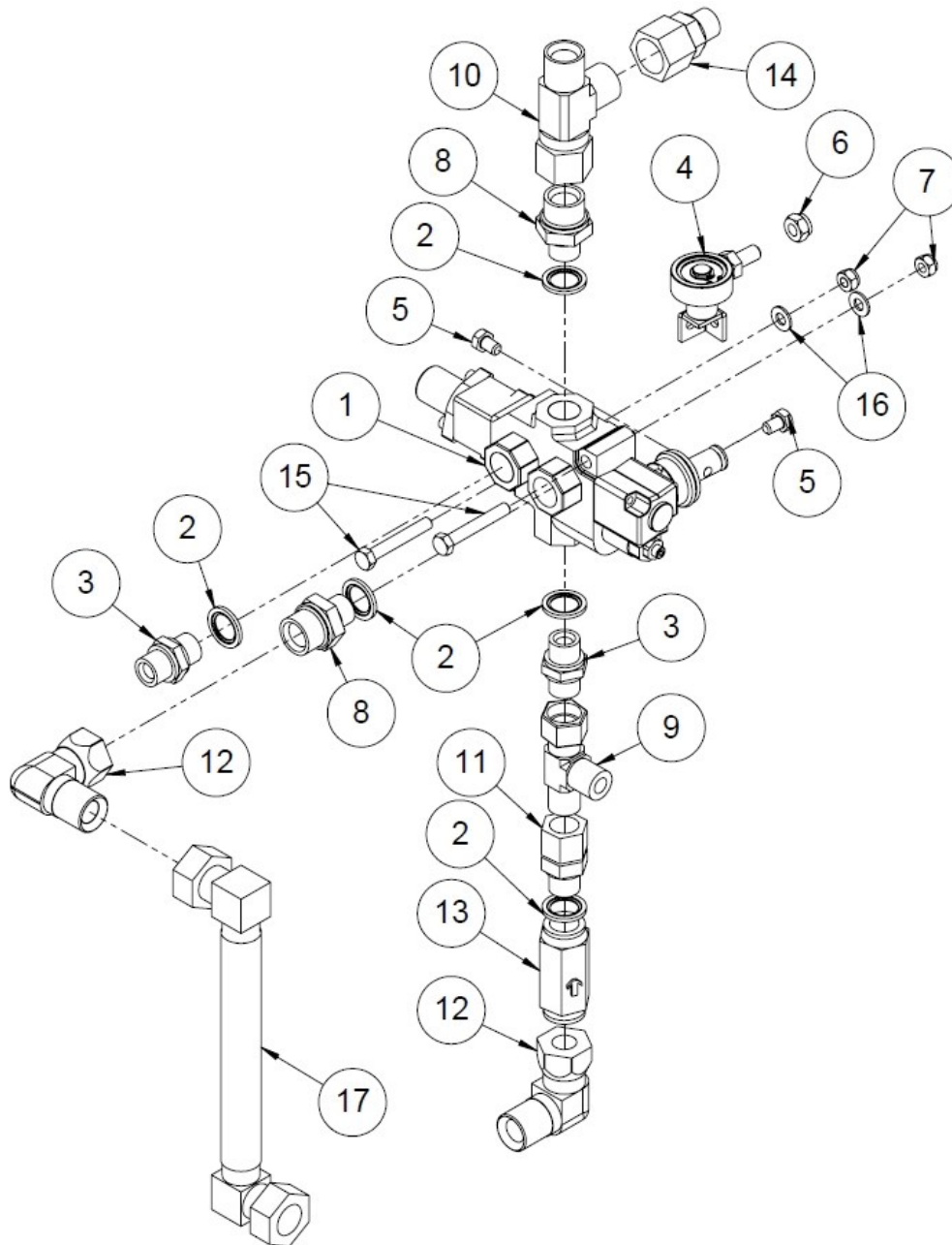
1.35 Control panel 50013005



### 1.36 Control panel parts list (50013005)

No.	Name	Part number	Dimensions	Pcs
26	Hydraulic hose	97147	250 x 3/8"	2
25	Lever	97425	AL08/m12*150	1
24	Hydraulic hose	97082	300 x 3/8"	1
23	Hydraulic hose	97140	1900 x 3/8"	1
22	Hydraulic hose	97050	1100 x 3/8"	2
21	Hydraulic hose	97139	1,800 x 3/8"	1
20	Hydraulic hose	97045	1,600 x 3/8"	1
19	Hydraulic hose	97008	700 x 3/8"	2
18	Slothead screw	96262	M5x16 -Z	4
17	Flange bolt	96172	M8x16	8
16	Remote starter	37648		1
15	Hex screw	96138	M10x20	4
14	Auxiliary valve	50016297		1
13	Valve mount	50012855	PL3	1
12	Saw pressure control	50016300		1
11	Washer	96084	M6	4
10	Locking nut	96221	M6	4
9	Locking nut	96222	M8	3
8	Washer	96049	A10	4
7	Washer	96060	A6	4
6	Washer	96061	A8	6
5	Hex screw	96119	M6x50	4
4	Hex screw	96127	M8x65	3
3	Output conveyor flow control valve	50016299		1
2	Valve mount cover	50012923	PL3	1
1	2-block valve	50016298		1

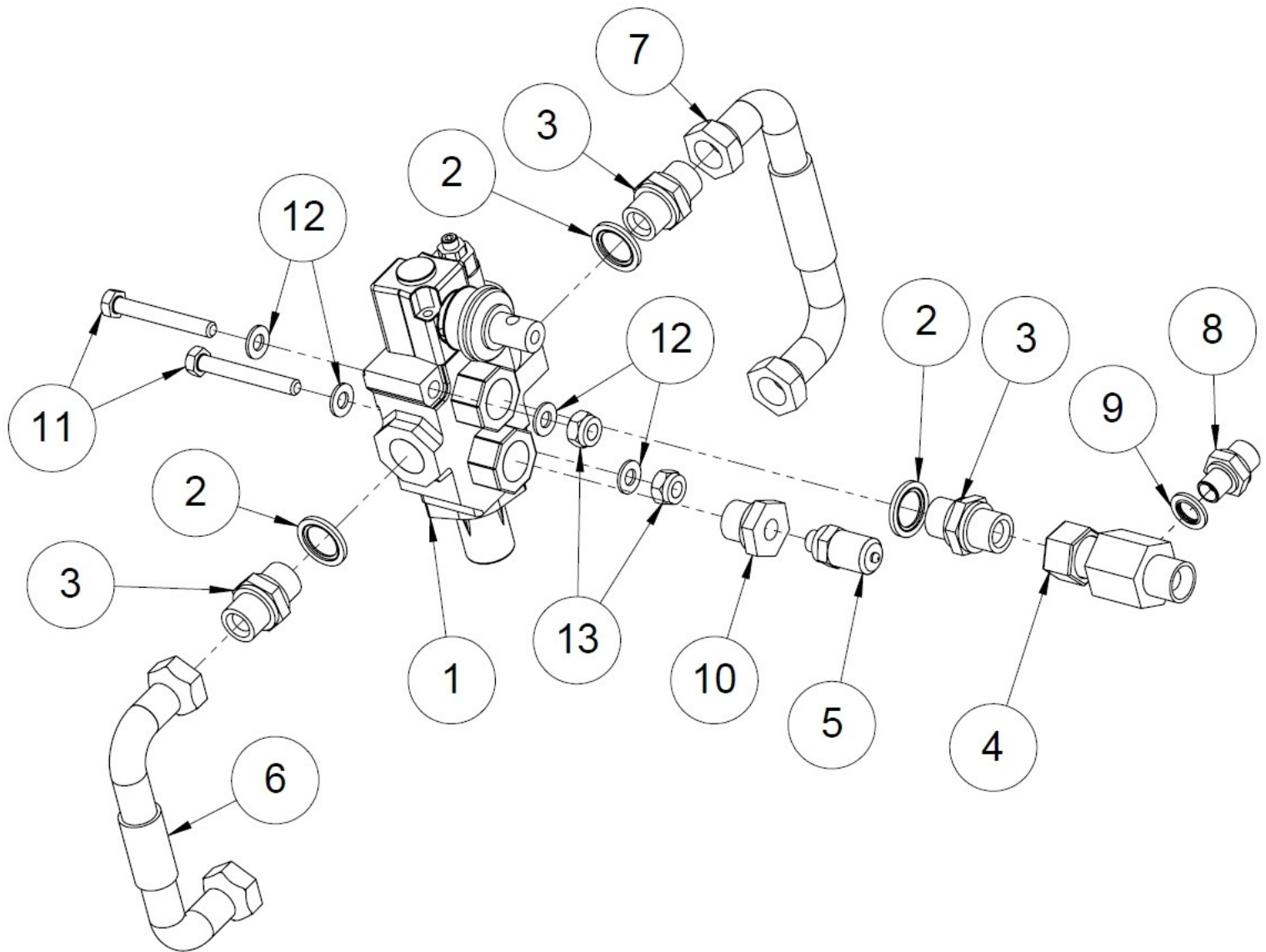
### 1.37 Splitting valve (50009823)



No.	Name	Part number	Dimensions	Pcs
17	Hydraulic hose	97122	750x 3/4"	1
16	Washer	96061	A8	3
15	Hex screw	96125	M8x55	2
14	Connecting nipple	97221	1/2" x 3/4"	1
13	Check valve	97252	1/2"	1
12	Corner nipple	97242		2
11	Connecting nipple	97216	1/2" x 1/2"	1
10	T-junction	97235	3/4"	1
9	Adjustable L-connector	97228		1
8	Double nipple, straight	97205		2
7	Locking nut	96222	M8	2
6	Locking nut	96068	M10	1
5	Hex screw	96160	M8x12	2
4	Operating lever	50012229		1
3	Double nipple, straight	97204		2
2	USIT	97213	1/2"	5
1	Splitting valve, Walvoil	97822		1

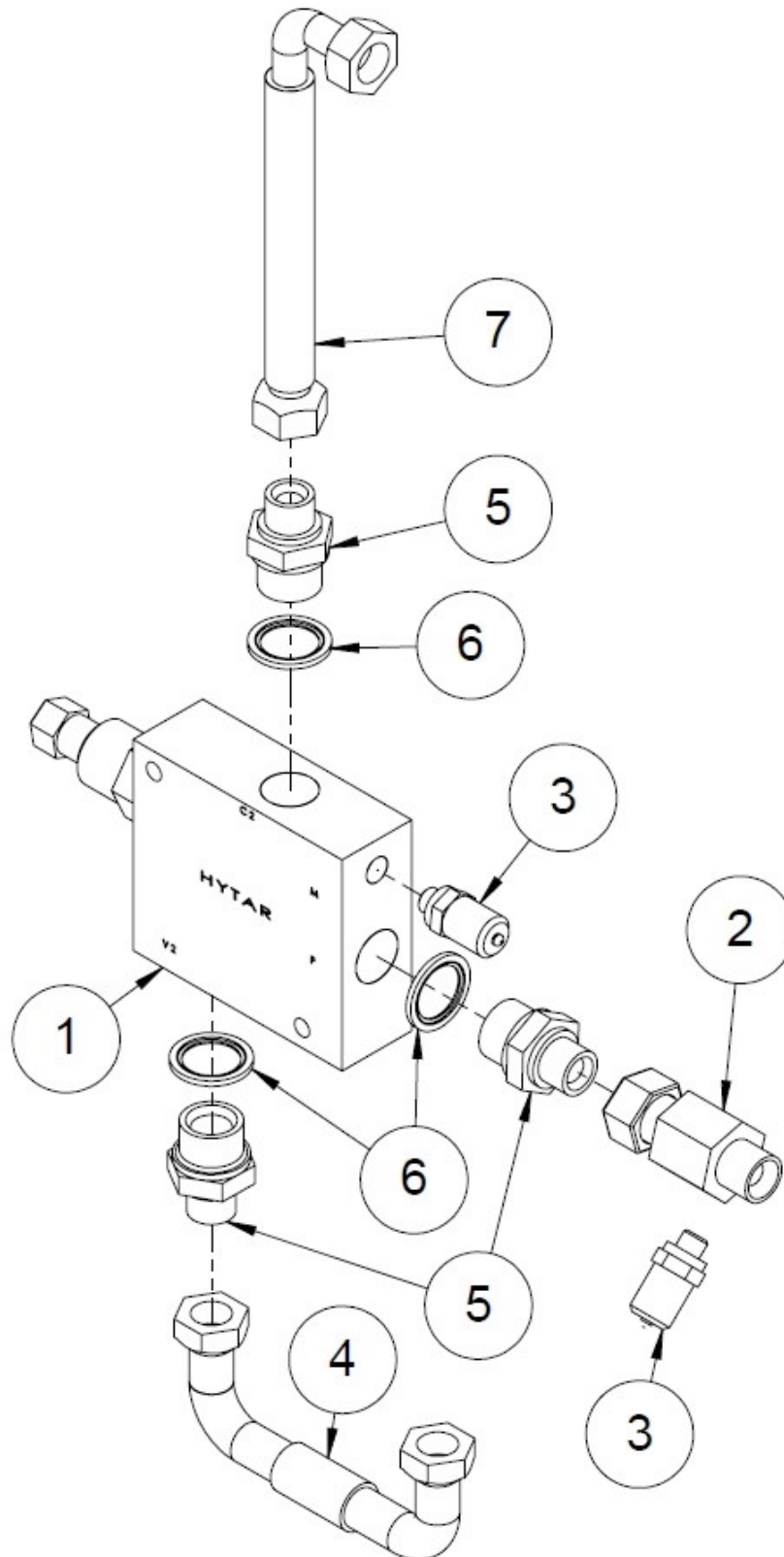


### 1.38 Saw valve (50016293)



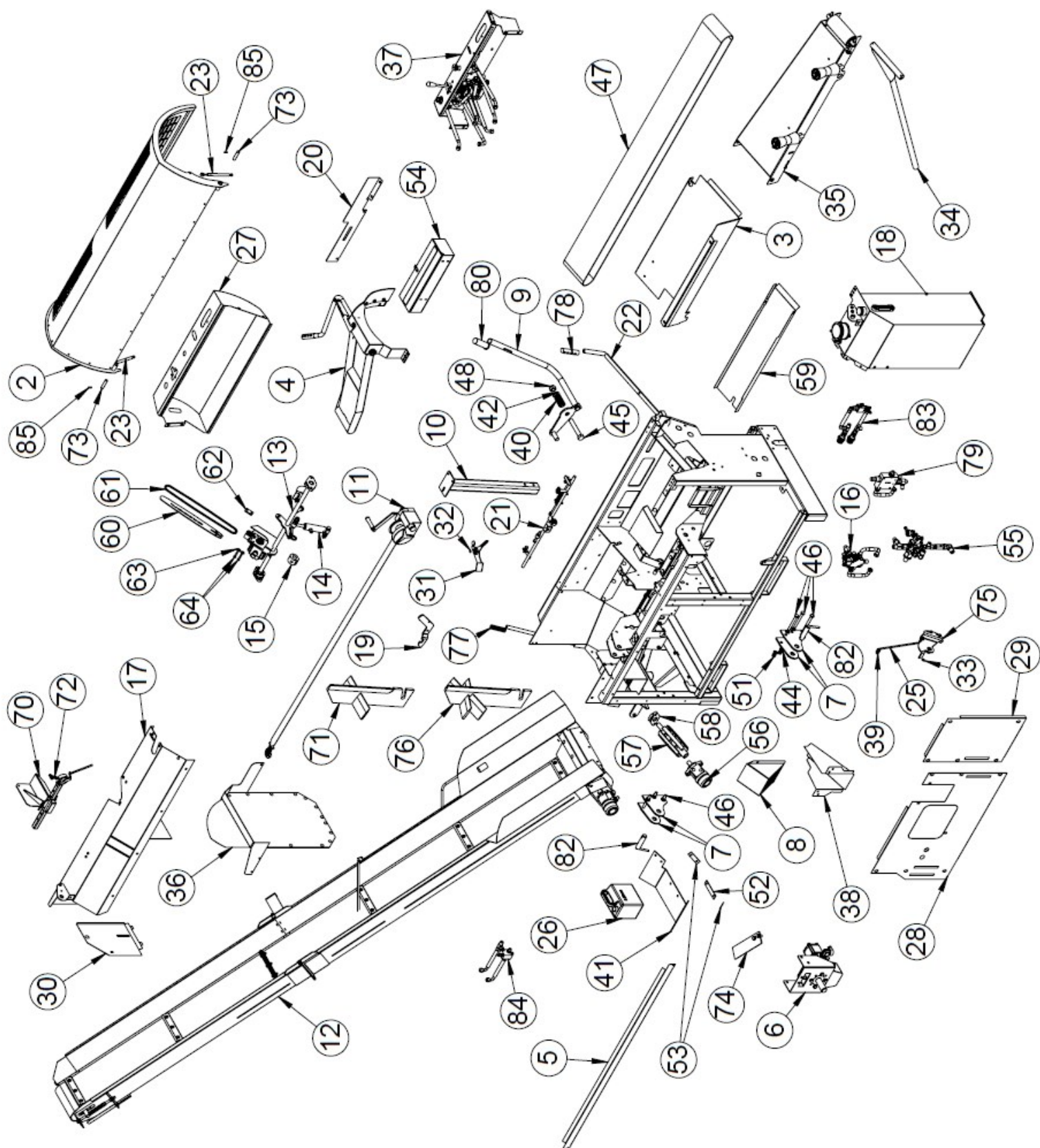
No.	Name	Part number	Dimensions	Pcs
13	Locking nut	96068	M10	2
12	Washer	96061	A8	4
11	Hex screw	96126	M8x60	2
10	Reducer fitting	97580	½" - ¼"	1
9	Usit	97211	¼"	1
8	Double nipple, straight	97201	¼" x 3/8"	1
7	Hydraulic hose	97161	1100x ½"	1
6	Hydraulic hose	97118	450x1/2"	1
5	Pressure measuring nipple	97378	1/4"	1
4	Connecting nipple (with a pressure measuring connection)	97390	½"	1
3	Double nipple, straight	97204	½" x ½"	3
2	USIT	97213	½"	3
1	Saw valve, Walvoil	97821		1

### 1.39 High-speed valve (50016292)



No.	Name	Part number	Dimensions	Pcs
7	Hydraulic hose	97075	400 x 1/2"	1
6	USIT	97214	3/4"	3
5	Double nipple, straight	97205	1/2" x 3/4"	3
4	Hydraulic hose	97118	450 x 1/2"	1
3	Pressure measuring nipple	97378	1/4"	2
2	Connecting nipple (with a pressure measuring connection)	97390	1/2"	1
1	Rapid motion valve	97825	3/4"	1

## 1.40 Tractor drive model (35010)

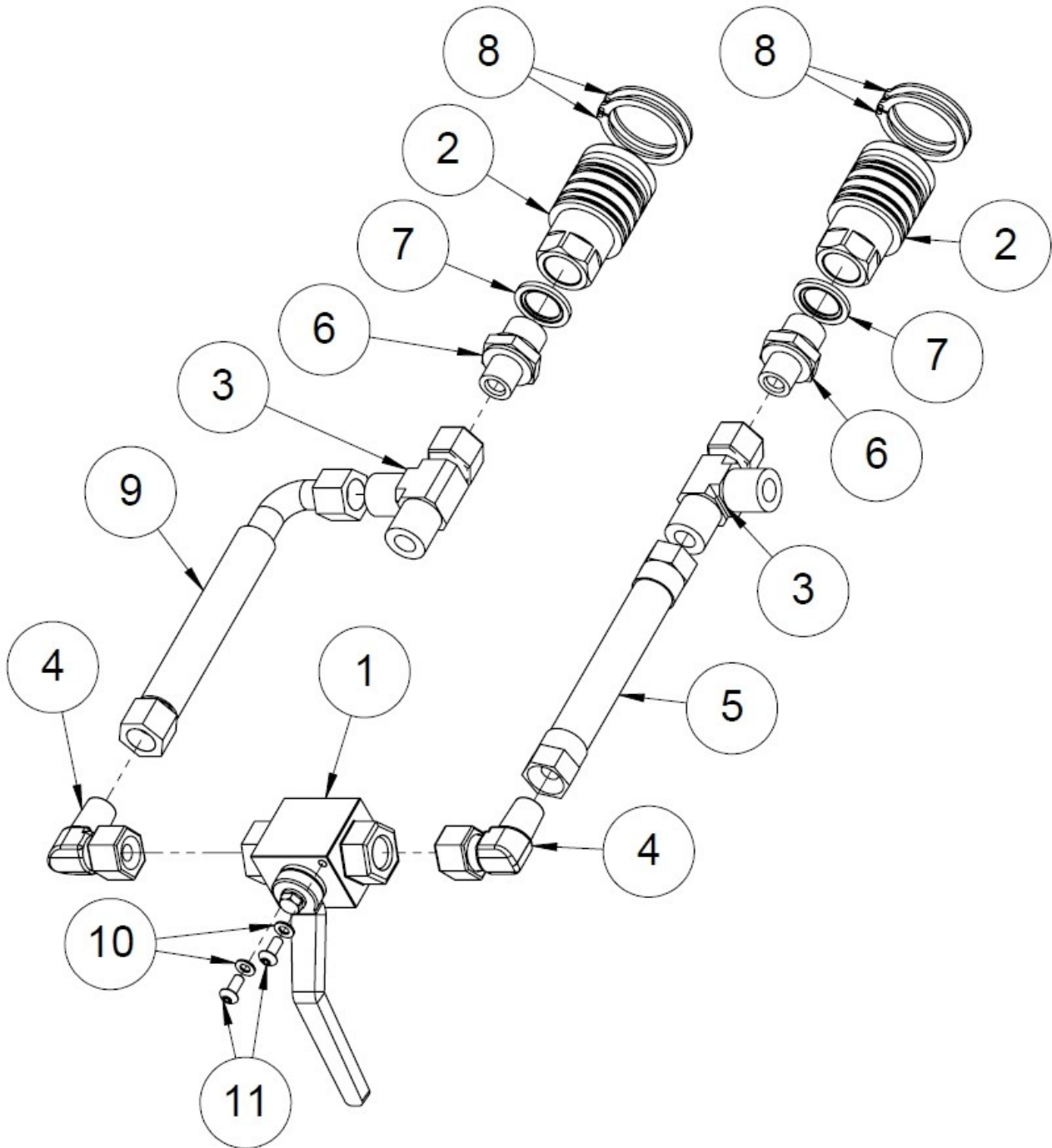


### 1.41 Tractor drive model parts list (35010)

No.	Name	Part number	Dimensions	Pcs
85	Spring pin	96354	6x24	2
84	Output conveyor safety	61216	85 bar	1
83	Input conveyor tap	50016294		1
82	Draw pin	36033		2
80	Sheath	95648	32mm	1
79	High-speed valve	50016292		1
78	Handle	95595		2
77	Handle	95034		1
76	6-way splitting knife	35207		1
75	Return piece	50009805		1
74	Splinter guard	50012933	PL5 80x310	1
73	Cover pin	47967	Ø16 L=70	2
72	Measuring device stopper	50016179		1
71	4-way splitting knife	35206		1
70	Log length limiter	50016021		1
69	Hex screw	96129	M10x40	2
68	Hex nut	96199	M10	2
67	Hex nut	96196	M8	2
66	Hex screw	96146	M12x30	2
65	Hex screw	96165	M8x30	1
64	Hex screw	96291	M8x50	2
63	Washer	96085	M8	3
62	Fastening rod for the saw bar	10044	8x30L=50	1
61	Saw chain, 66 loops	95148	0.325/1.5 mm	1
60	Saw bar, 16 inches	95147		1
59	Sawdust trough	50015566	PL1.50	1
58	UC 205 Bearing	95318		1
57	Input conveyor drive roller	50000467		1
56	Hydraulic motor	97308	MSEPM 200	1
55	Splitting valve	50009823		1
54	Toolbox	50005582		1
53	Rubber fastening plate	37595	PL3 30x85	2
52	Rubber fastening lower plate	37596	PL3 30x140	1
51	Locking nut	96211	M14	6
50	Locking nut	96068	M10	1
49	Locking nut	96218	M12	2
48	Locking nut	96214	M24	1
47	Input conveyor belt	95128		1
46	Hex screw	96295	M14x120	6
45	Hex screw	96343	M24x150	1
44	Washer	96051	A14	12
43	Washer	96058	A12	4
42	Washer	96054	A24	1
41	Splitting groove rubber plate	95496	PL5 x240x550	1
40	Pressure spring	95646		1
39	Stopper	50009248		2
38	Sawdust trough	50004189	PL1,5000 334x569.7	1

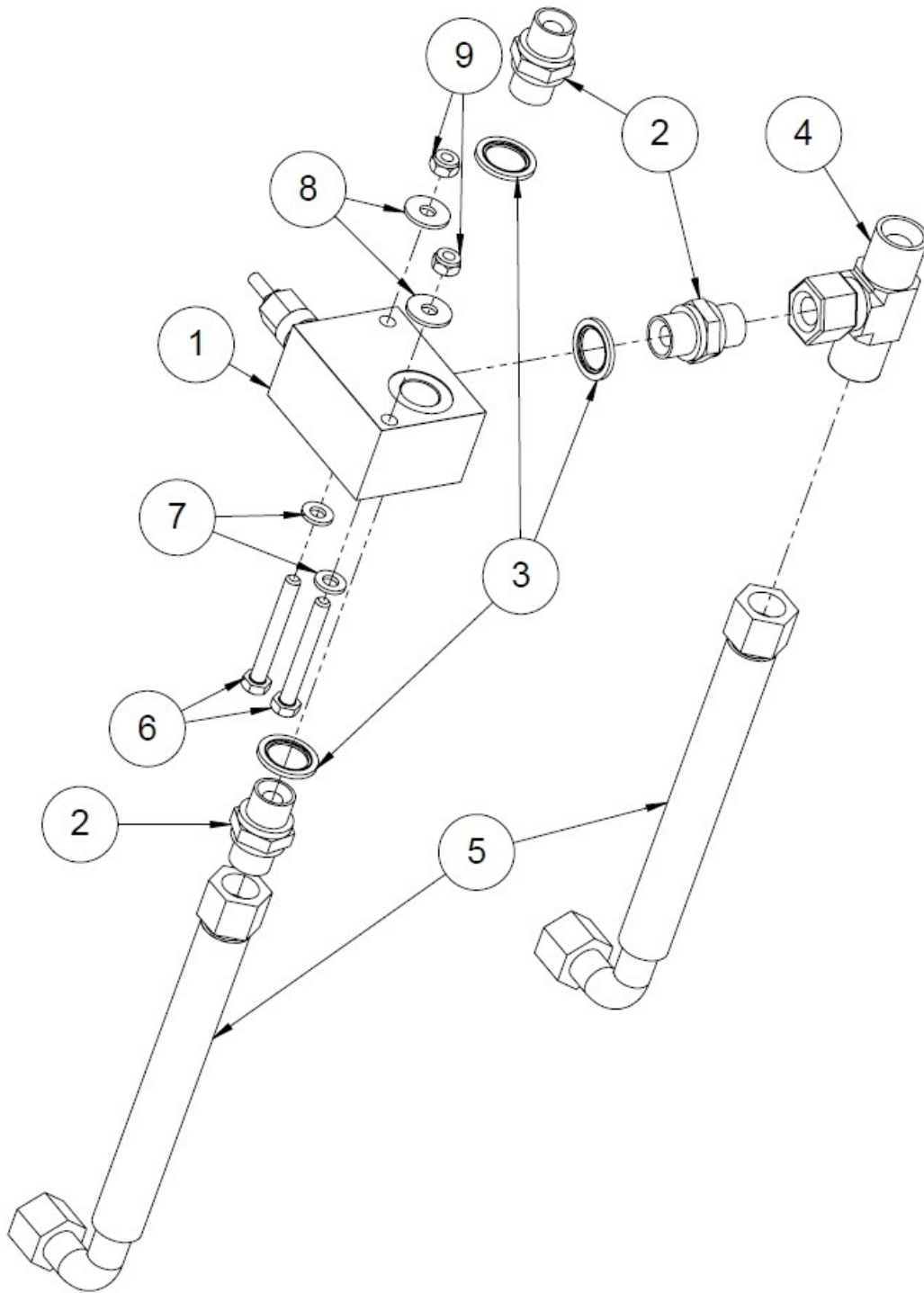
37	Valve mount	50013005		1
36	Splitting end guard	50013269		1
35	Input table extension	50012752		1
34	Support for input table extension	50012751		1
33	Retaining ring	96038	16	1
32	Retaining ring	96380	12	1
31	Trigger	50012252		1
30	End plate	50011820	PL1.50	1
29	Rear guard plate	50011765	PL1.50	1
28	Rear cover	50011766	PL1.50	1
27	Control panel	50011375		1
26	Oil container 3l	95647		1
25	Safety rod	50002889	Ø8	1
24	Hex socket screw	96023	M8x16	1
23	Gas spring 4498	95562		2
22	Return lever	50002587		1
21	Splitter linkage	50010370		1
20	Guard	50007025	PL3	1
19	Conveyor catch	50004511	PL8 261.2x161.2	1
18	Tank assembly	50009983		1
17	Cover assembly	50016790		1
16	Saw valve	50016293		1
15	Support bearing	50010215	Ø60	1
14	Cutting cylinder	50016295		1
13	Drive head	50010223		1
11	Output conveyor winch	37151		1
10	Winch fastening pipe	10825		1
9	Knife adjustment	50004469		1
8	Sawdust guide	37551		1
7	Lifting arm lug	37454	PL8 x160x185	4
6	Gear + pump	50008181		1
5	Baffle	37447	PL1,5000 x90x1656	1
4	Wood gripper	50004099		1
3	Input table cover	50007151		1
2	Upper cover	37430		1
1	Frame slide, etc.	50009988		1

### 1.42 Input conveyer tap (50016294)



No.	Name	Part number	Dimensions	Pcs
11	Hex socket screw	96003	7380 M5x12	2
10	Washer	96055	A5	2
9	Hydraulic hose	97028	360 x 3/8"	1
8	Retaining ring	96371	38	4
7	USIT	97213	1/2"	2
6	Double nipple	97203	3/8" x 1/2"	2
5	Hydraulic hose	97018	400 x 3/8"	1
4	Directional corner nipple	97250	3/8"	2
3	T-junction (L-connector)	97234		2
2	Quick coupling, female	97388	1/2"	2
1	Ball valve	50000298	3/8"	1

### 1.43 Output conveyor relief valve (61216)



No.	Name	Part number	Dimensions	Pcs
9	Locking nut	96221	M6	2
8	Washer	96084	M6	2
7	Washer	96060	A6	2
6	Hex screw	96119	M6x50	2
5	Hydraulic hose	97008	700x3/8"	2
4	T-junction (adjustable)	97230		1
3	USIT	97212	3/8"	3
2	Double nipple, straight	97202	3/8" x 3/8"	3
1	Relief valve	97411	3/8" 40-210B	1