



PM-000181  
22v1



**KANGA**  
**LOADERS**



**BUILT TOUGH SINCE 1981**

**MULTI-TASK COMPACT UTILITY LOADER**



### FASTEST QUICK-HITCH

Change attachments in a matter of seconds.

### IMPROVED SOFT-TOUCH CONTROLS

- Smooth to drive.
- Improved operator ergonomics.
- Improved safety, with safety cut-out switch if no operator is present.

### FULL FLOW AUXILIARY

Hydraulic power outlet.

### LONG-LIFE LINKAGE PINS

Greasable pins ensure extended cycle life of pins and bushes.

### PERFECTLY BALANCED

Superior design enables the loader to remain balanced either fully loaded, or with attachment removed.

### POWERFUL V-TWIN ENGINE

Engineered to take on the most demanding commercial applications. Featuring many technologies to extend reliability and enhance performance.

### BUILT TO TRAVERSE OVER VARIOUS GROUND CONDITIONS

Choice of heavy duty tracks or wheels.

### LARGE NON-SLIP OPERATOR PLATFORM

Wide stance for improved safety and fatigue reduction. Perforated platform, free from hot engine obstruction.

# ENGINEERED FOR SAFE, USER-FRIENDLY OPERATION AND PEACE OF MIND.

Since inventing the mini loader in 1981, Kanga has continued to lead the industry in **safety**, **innovation**, and **performance**. Kanga Loaders adheres to Occupational Health & Safety government guidelines, and operates under World's Best Practices, incorporating H.A.V. (Hand Arm Vibration) standards, as well as internationally recognized Risk Management studies and procedures.



## WIDE RANGE OF ATTACHMENTS

Specially designed for the 2 Series Loader.



## NARROW ACCESS

With an overall width of 30.2in (wheeled) / 32.3in (tracked), you can access the worksite through side gates and standard doorways.



## SAFETY AUXILIARY CUT-OUT

Power to the attachment is cut when the controls are released, ensuring maximum safety for the operator.



## SAFETY RELIEF VALVE

The lift circuit is set at 1500psi to protect the operator from overloading the machine, and is located on the machine's rear, for ease of access.



## AMPLE GROUND CLEARANCE WHILE MAINTAINING A LOW CENTER OF GRAVITY

When the loader arms are lowered to rest on the frame the buck can be rolled back to carry a full load while maintaining ground clearance and a lower center of gravity.



## TRAVERSE OVER UNDULATING GROUND

Crawl over gutters and uneven terrain with confidence. Unlike other brands with fixed under-carriage track systems, Kanga's stable wrap-around tracked system will not pivot whilst traversing over undulating ground.

# 2 SERIES

## POWER HEAD

### POWER HEAD | OK30401

Driving head for augers with overall diameters between 4" (100mm) - 18" (450mm), as well as mixer bowl. Comes with tow ball and ripper.



### MIXER BOWL | KA-000008

Convert your Kanga into a mobile concrete mixer. No more hauling materials to the mixer or concrete to the job. Easily lift and place concrete over low walls or into post holes etc. Requires an Auger Power Head attachment (OK30401).



### AUGERS

Available with Tungsten carbide tip pilots with Earth, Tungsten Carbide, or Multi-faceted Tungsten teeth, in single or double cutting head configurations. Choose from diameters between 4" (100mm) and 18" (450mm). Tree augers also available with a root ball of up to 20" (500mm).



### AUGER EXTENSION | I-KIDEXT-300-K

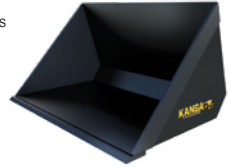
Fits between the power head and auger, to increase digging depth.



## BUCKETS

### STANDARD BUCKET | OK11630

Open shape helps prevent sticky materials from clogging. Volume sized to rated load capacity cannot be exceeded when brim filled with heavy materials, wet sand or gravel. Ideal for everyday use, shifting sand and soil, clean up and backfill. Heaped volume: 2.72cu ft / 0.077m<sup>3</sup>.



### 4 IN 1 BUCKET | OK60063

Enables front blading, back blading, plus all the advantages of a regular bucket. Open jaws to dump at full height. Use jaws for stump, post and tent peg pulling, lifting, placing rail road ties and rocks, broken tree limbs & broken concrete etc. Heaped volume: 2.97cu ft / 0.084m<sup>3</sup>.



### MULCH BUCKET | OK50135

For handling bulky, light materials such as bark chips, mulch and sawdust, quickly and easily. Straight cutting edge to scrape floors clean. Use in horse stables, stud farms and feed lots etc. Heaped volume: 4.06cu ft / 0.115m<sup>3</sup>.



### RUBBLE BUCKET | OK50191

Ideal for preparing difficult rocky soil for sod and turf. For removal of unwanted rocks and sticks, leaving soil behind. Makes light work of the most difficult site conditions. A grapple attachment is also available.



**A VAST SELECTION OF ATTACHMENTS ARE AVAILABLE SPECIFICALLY FOR THE 2 SERIES, ENABLING YOU TO COMPLETE THE TOUGHEST JOBS QUICKLY AND EASILY.**

**DESIGN - STRENGTH - EASE OF OPERATION - VALUE**

## LAWN & GARDEN CARE

### LAWN AERATOR | OK50405

Rejuvenates old tired lawns, and reduces compaction. The holes created by the aerator allow oxygen, water, and nutrients into the soil profile which stimulate better grass growth. 30" (765mm) wide.



### TURF CUTTER | OK50180

With only one moving part (front roller), the turf cutter is a low maintenance attachment which provides stability to set the required cutting depth, and effortless control for removing old turf, transplanting sod, and removing turf prior to trenching. Cutting width: 12" (300mm).



### CARRVALL LEVELLER | OK50110

For transporting bulky items, paving tiles, cement bags, nursery plants, sod, turf and fence palings. Ideal for preparing top soil for sod or turf laying and levelling bedding sand for pavers. 35" (900mm) wide.



### HYDRAULIC ANGLE BLADE | OK85003

Backfill Blade ideal for backfilling trenches, pushing loose soil, feed lot clean-out. Fingertip hydraulic controlled side shift tilts blade from left to right. 39" (1000mm) wide.



### ROTARY TILLER | OK83701

Heavy duty tiller turns the toughest ground into beautiful garden beds. Perfect for sod and turf bed preparation. Cuts 4.5" (120mm) deep, and 30" (750mm) wide.



## BRUSHES

### BUCKET BROOM | OK50303

Clean up all manner of debris and leave your construction site clean. Self loading bucket, ideal for side walks, parking lots, factories, industrial sites and feed lots etc. Reverse rotation to push snow and gravel. Broom swings away automatically as bucket is emptied.



## TRENCHERS

### TRENCHER | OK42025

24" (600mm) maximum depth, 4" (100mm) width. Ideal for irrigation, garden lighting, drainage trenches.



## MULTI-TOOLS

### MULTITool BAR CARRIER | OK50063

The Multitool Bar Carrier features a 'quick attach' system that will have compatible Kanga tools in place in mere seconds. The Multitool Bar Carrier can be used with the Tow Hitch, and Forks.



### RIPPER/HOOK | OK30403

Ideal for ripping hard ground before digging with a bucket, and can also be used as a lifting hook. A tow ball can also be attached to the frame for towing.



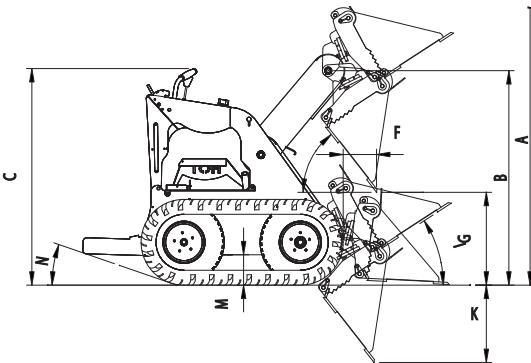
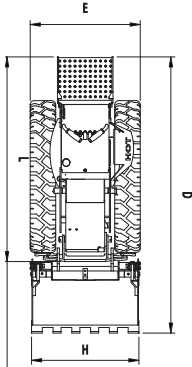
## SPECIALIST TOOLS

### VINYL STRIPPER | OK50220

Quickest way to remove floor coverings - including vinyl, carpet, wooden floors, and even scraping the adhesive used.



# 2 SERIES



The above graphic is intended for illustrative purposes only.

## PERFORMANCE

Tipping load with no bucket <sup>1</sup>
Rated operating capacity (ROC) with no bucket <sup>1</sup>
Travel speed
Fuel capacity
Fuel type
Machine weight with no operator / bucket <sup>2</sup>

## ENGINE

Manufacturer
Gross power rating <sup>3</sup>

## DRIVE SYSTEM

Drive control
Throttle control
Tracks/Wheels with direct drive hydraulic motors

## HYDRAULICS

Gear pump displacement
Pump output
System pressure
Hydraulic reservoir capacity

## KANGA BUCKETS

Standard bucket capacity (heaped / struck volume) <sup>4</sup>
4in1 bucket capacity (heaped / struck volume) <sup>4</sup>

## DIMENSIONS

<b>A</b> Maximum operating height with bucket
<b>B</b> Height to hinge pin
<b>C</b> Overall height
<b>D</b> Overall length with bucket
<b>E</b> Overall track / wheel width
<b>F</b> Bucket horizontal reach at 57° (arms up)
Bucket horizontal reach (arms level)
<b>G</b> Dump height Std. bucket
Dump height 4in1 bucket
<b>H</b> Bucket width
<b>I</b> Bucket maximum rollback
<b>J</b> Bucket maximum dump angle
<b>K</b> Ground penetration
<b>L</b> Overall length less bucket
<b>M</b> Ground clearance
<b>N</b> Angle of departure

Approach angle with no bucket (and with bucket rolled back)

## SPECIFICATIONS

GAS - TK216V		GAS - KK216V	
729 lbs	331 kg	742 lbs	337 kg
328 lbs	149 kg	371 lbs	169 kg
3.4 m/h	5.4 km/h	3.4 m/h	5.4 km/h
1.85 gal	7 L	1.85 gal	7 L
GAS		GAS	
1041 lbs	472 kg	979 lbs	444 kg
Vanguard 305777		Vanguard 305777	
29 cu.in	11.8 kW	29 cu.in	11.8 kW
Soft touch hand levers		Soft touch hand levers	
Hand levers		Hand levers	
Tracked		Wheeled	
0.488 cu.in/rev	8 cc/rev	0.488 cu.in/	8 cc/rev
6.3 gpm	24 lpm	6.3 gpm	24 lpm
2700 psi	186 bar	2700 psi	186 bar
13.6 gal	51.5 L	13.6 gal	51.5 L
2.72 cu ft / 2.08 cu ft (0.077 m <sup>3</sup> / 0.059 m <sup>3</sup> )			
2.97 cu ft / 2.23 cu ft (0.084 m <sup>3</sup> / 0.063 m <sup>3</sup> )			
62.2"	1580 mm	61.8"	1570 mm
46.7"	1185 mm	46.3"	1175 mm
47.6"	1210 mm	47.2"	1200 mm
81.5"	2070 mm	81.5"	2070 mm
32.3"	800 mm	30.3"	770 mm
13.4"	340 mm	13.4"	340 mm
33.1"	840 mm	33.5"	850 mm
23.4"	595 mm	23"	585 mm
46.7"	1185 mm	46.3"	1175 mm
31.5"	800 mm	31.5"	800 mm
36°		36°	
48°		48°	
17.1"	435 mm	17.5"	445 mm
61.4"	1560 mm	61.4"	1560 mm
6.3"	160 mm	5.9"	150 mm
17°		17°	
90° (32°)		90° (32°)	



<sup>1</sup> Tipping load and Rated Operating Capacity (ROC) have been determined to ISO 14397-1. This is to represent general loader capabilities, and cannot be used for material load without adjusting for the specific attachment.

<sup>2</sup> Machine Weight is calculated with no operator, using no bucket, full fuel tanks, and air-filled tires.

<sup>3</sup> Power Rating is the gross power of the production engine, only as measured in accordance with SAE J1995 at 3600 RPM. Mass production engines vary from this value. Actual power output for the engine installed in the delivered machine may vary, depending on numerous factors. These factors can include engine operation in the application, environmental conditions, and other variables.

<sup>4</sup> Volumes based on ISO 7546:1983.

# GET THE BEST FROM YOUR KANGA WITH OPTIONAL ADD-ONS...

- ✔ **LED Headlights.**
- ✔ **Horn** - often required for Operational Health & Safety.
- ✔ **Flashing Amber Beacon Light** - often required for Operational Health & Safety.
- ✔ **Oil Cooler** - maintains the oil temperature for optimal performance.
- ✔ **Handbrake** - a park brake operated by hand (extra safety brake).
- ✔ **Emergency Stop Button** - shuts down the machine functions in the event of an emergency.
- ✔ **Back Protection Bars** - an extension of the safety cell used to encapsulate the operator when operating in confined spaces, protecting the rear of the machine from unnecessary damage.
- ✔ **Battery Isolator Switch** - with an option for a padlock available, to enable machine lock-out.
- ✔ **Color Customize** your machine to match the rest of your fleet, or corporate colors.

## SELF-LEVELLING BUCKET STANDARD FEATURE

Makes it impossible for the load to tip onto the operator or the machine.

DESIGN - STRENGTH - EASE OF OPERATION - VALUE



# THE WORLD'S SMALLEST MINI LOADER

The Kanga 2 Series is the world's smallest multi-task compact skid steer loader. Fitted with a special range of Kanga attachments, you can complete the toughest jobs quickly and easily. With residential site access becoming increasingly smaller, the 2 Series is the popular choice among landscapers, pool installation, builders, contractors, plumbing, electrical contractors, and many more.



- ✔ Efficient engine operation
- ✔ output performance
- ✔ Easy to use & maintain
- ✔ Easy to start
- ✔ Reliable
- ✔ Quiet



## VANGUARD SMALL BLOCK V-TWIN ENGINE

Vanguard is the commercial arm of Briggs & Stratton - The world's largest producer of small four-cycle engines. Producing power equipment for over 40 years, Briggs & Stratton's 'Cooler / Cleaner Technology' reduces engine and oil temperatures while also pre-filtering air, before pushing it into the air cleaner. A poly core housing also helps reduce noise coming from the engine.



1978



The original idea which led to the world's first stand-on machine, was originally a motorized wheelbarrow.

1980



By 1980, the concept developed into a walk-behind machine with similar design and styling characteristics, found on modern machines.

1981



The first stand-on machine was introduced to the world. Named the Riga'l Universal Loader, it was powered by an 11hp motor.

1984



The loaders were renamed the Jaden Loader. A larger sized model was released, named the Dingo 1000.

1985



The Jaden Maxi prototype was powered by a 16hp Engine. Only 35 were ever made.

1999



The 5 Series model saw an introduction to soft-touch controls, auxiliary cutout, and redesigned fuel tanks, in preparation for the introduction of tracks.

2000



The 2 Series was released, to align with the original concept of a tight access and affordable earthmoving solution.

2002



The Kid track mini loader was released, as the smallest tracked machine in the world.

2003



6 & 7 Series mini loaders were released. Originally named the Big Foot, due to its 12" wheels, available in a 24hp petrol, or 20hp Diesel engine. The Track machine was named Fat Track.

2006



A new 25hp 2-speed 8 Series loader, featuring an oil cooler, trenching valve, and auto quick-hitch release - The largest and most powerful in the range.

2013



The Kanga 8 Series range, featuring a 25hp diesel motor, was released. Available in wheeled and tracked versions.

2015



Kanga release the Kanga Klean program as an industry-first in emissions reduction.

2016



Kanga release the DT835 as the most powerful Kanga mini loader.

2017



Kanga Loaders launches in North America - USA.

2021



Kanga Loaders celebrates its 40th year anniversary.

AUSTRALIAN MADE QUALITY SINCE 1981

1986



Mk1 - A major chassis design revision was undertaken to increase power and improve poise & balance.

1988



Long range fuel tanks were added over the wheels. Power was increased to 16hp.

1989



3 Series - Optional 10" wheels, larger fuel tanks (which encapsulate the operator), and the iconic green colour were introduced. Received 'Australian International Design' Award.

1996



4 Series - First model with 10" wheels as standard. Petrol and Diesel model options became available.

1997



Kanga begins exports to North America and New Zealand.

2007



6 & 7 Series upgraded to 4-wheel motors, a wider platform, and an increase of performance and comfort. Received 'Innovative Product of the Year' Award.

2008



Remote Loader commences development, and first prototype released.

2009



Kanga Loaders was acquired by Digga Australia. The manufacturing of loaders was moved into the Digga factory.

2010



The Kanga Warrior was released. A cost effective bare-bones model for the weekend warrior.

2011



The Kanga Remote Loader was released, with wheeled and track versions available.

2022



Logo and machine branding modernised.

# KANGA LOADERS

## MULTI-TASKING MADE EASY

Since being established in 1978 as Jaden Engineering, the Kanga loader has been a source of innovation for the multi-task compact skid steer market. Upholding the highest safety industry standards, starting with the original idea and prototype in 1980, Kanga later developed the first production model in 1981. Kanga Loaders has since become an Australian household name within the mini loader industry.

# KANGA

## LOADERS

A yellow kangaroo mascot wearing a black hard hat and driving a yellow loader with large black tires.

**TURNING HARD WORK  
INTO EASY BUSINESS  
SINCE 1981**

**PHONE** 833 30KANGA

**EMAIL** infous@kangaloader.com



## WARRANTY



### ENGINE

**3 YEARS/UNLIMITED**

Gas machines

### COMMERCIAL PRODUCT

**5 YEARS**

Chassis structure.

**2 YEARS/1,000 HOURS**

Arm/tilt assembly workmanship and structure.

**1 YEAR**

Other components and electrical.  
Warranty Conditions Apply.

[kangaloaderusa.com](http://kangaloaderusa.com)