

REMOTE CONTROL



PM-000235
22v1



KANGA
LOADERS

The logo for Kanga Loaders features a stylized yellow kangaroo with a long tail, positioned as if it is sitting on a small loader with two large, treaded wheels. The kangaroo is facing right.

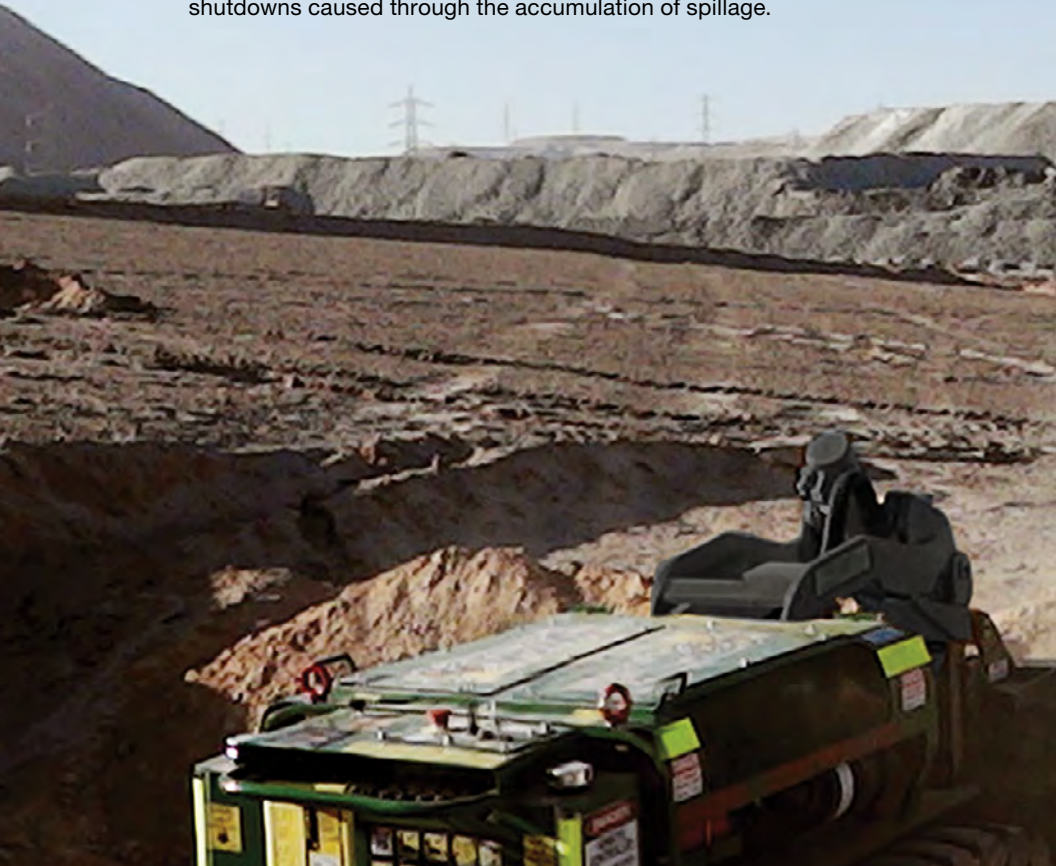
BUILT TOUGH SINCE 1981

MULTI-TASK COMPACT UTILITY LOADER

MINIMIZE RISK AND IMPROVE PRODUCTIVITY

WORKING HARD, WHERE NO ONE WANTS TO GO

The unmanned loader offers maximum protection and increases workplace safety by placing the operator out of the immediate vicinity of moving parts / hazardous, or dangerous environments. The Kanga remote loader will give you the ability to schedule routine maintenance - Eliminate costly unplanned conveyor shutdowns caused through the accumulation of spillage.



DESIGN - STRENGTH - EASE OF OPERATION - VALUE

KANGA OFFERS A VAST SELECTION OF ATTACHMENTS FOR COMPACT LOADERS TO SUIT MANY APPLICATIONS.



AT KANGA, WE MAKE IT OUR BUSINESS TO UNDERSTAND YOURS. WE REALIZE YOUR BUSINESS IS DRIVEN BY RETURN ON INVESTMENT AND UTILIZATION.

- ✔ Want to prevent costly unplanned shutdowns of broken conveyor belt drives?
- ✔ Are you concerned your staff is being exposed to hazardous environments?
- ✔ Want to reduce 'lost time' injuries?
- ✔ Looking for a solution to provide you with an exceptional return on investment?
- ✔ Are you after a product that will give you versatility and allow you to multitask?

The Kanga TR825 and WR825 Remote Controlled Loaders can remove material up to 10 times faster than a laborer, and eliminates the need for expensive shutdowns. Investing in a Kanga Remote Loader will minimize the need for performing dangerous and manual tasks - Immediately reducing labor fatigue. The TR825 and WR825 will also reduce LTI's (Lost Time Injuries) which can cost an average of hundreds of thousands in dollars per incident.



KANGA REMOTE CONTROL LOADER

Kanga Loader's substantial hydraulic, mechanical, and electrical engineering experience has made it possible to bring you a quality precision multi-tasking machine. Introducing the Kanga TR825 and WR825 loaders. Kanga's reputed workmanship guarantees these loaders will change the way you work. The inventors of the world's first stand-on mini loader have designed a remote controlled mini loader to help minimize risk, and improve productivity around hazardous and confined work areas. Standing at roughly 42" high, the remote loader has the ability to eliminate traditional work methods of manual labor, and will do your job quicker, safer, and will also save you time and money.

Kanga's radio-controlled mini loaders are a clear leader when it comes

to accessing and working in tight, hazardous, and confined spaces. Whilst most traditional remote machines have been designed for a single purpose, these loaders offer a multitude of attachments to ensure maximum utilization for the life of the machines.

- Clean under conveyor belt systems in mining applications, for both stationary and operating systems.
- Work in hazardous environments and confined access areas.
- Recover material with poor accessibility - Including; drains, tanks, pipes, and other confined spaces.
- Cement smelter.

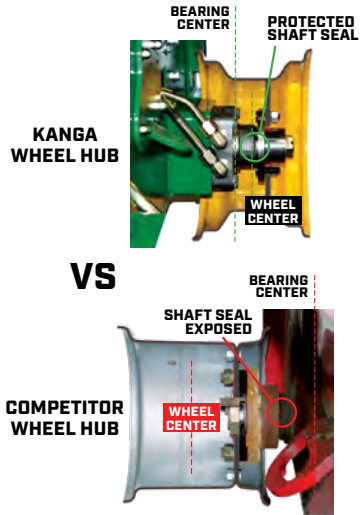


- ▶ Trenching
- ▶ Sweeping
- ▶ Augering holes
- ▶ Levelling
- ▶ Bucket work (4-in-1 Bucket)
- ▶ Hydraulic hammer

DESIGN - STRENGTH - EASE OF OPERATION - VALUE

ENGINEERED TO PERFORM WITH MINIMAL MAINTENANCE. BUILT TO LAST.

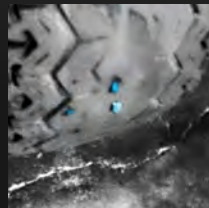
- ✔ Kanga's compact wheel hub design has zero overhang. Unlike competing brands, the wheel load is placed directly over the bearings, ensuring a longer service life.
- ✔ A zero overhang helps protect against seal damage from stringy weeds, stringy bark, mulch, and other entanglement, preventing unnecessary maintenance and premature seal failures.
- ✔ Our wheel motors are simple to service and replace.



PUNCTURE-PROOF YOUR TYRES

Kanga Loaders offers a puncture-proof tyre system for your loader. The puncture-proof tyre system is a resealing substance which is pumped into the tyre through the valve stem, and remains liquid for the life of the mounted tyre. As the wheel rotates, centrifugal forces

spread the liquid evenly over the interior tyre lining. If the tyre is punctured, thousands of strong interlocking 'reseal' fibres clot in and around the puncture to prevent any loss of air, forming a seal. Available from your Dealer.



**ANTI-
PUNCTURE
TYRE
RESEALING
SYSTEM**

REMOTE CONTROL

TRANSMITTER BATTERY	DIESEL - TR825	
Power supply (battery MBM06MH)	NiMH 7.2 V	
Antenna	Internal	
Housing material	PA 6 (20% fg)	
Protection degree	IP65	
Dimensions	12.2" x 8.3" x 7.5"	310 mm x 210 mm x 190 mm
Run time (at 68°F/20°C)	11 h	
Run time with data feedback (at 68°F/20°C)	9.5 h	
Run time with low power (at 68°F/20°C)	14 h	
Run time with data feedback and low power (at 68°F/20°C)	12.5 h	

PERFORMANCE LEVEL OF SAFETY FUNCTIONS ACCORDING TO EN ISO 13849-1

STOP Protection	PL e (4-wire wiring)	
STOP Protection	PL e (2-wire wiring)	
Protection against unintended movement from standstill position	PL d	
Protection Degree	IP65	

AC BATTERY CHARGER

Supply voltage	80-250 Vac (50/60 Hz)	
Maximum recharging time	4 h	
Recharging temperature range	41°F - 113°F	+5°C - +45°C
Protection degree	IP40	

DYNAMIC SERIES TECHNICAL DATA

Frequency band in dynamic mode	915 - 928 MHz	
Frequency band in static mode	915 - 928 MHz	
Transmitting power	Meets the requirements for free-license apparatus	
Available radio channels	260	
Available radio channels with static mode	260	
Channel spacing	50 kHz	
Hamming distance	> 15	
Probability of undetected error	< 10 ⁻¹⁵	
Typical working range	328ft	100m
Working range with low power function	100ft	30m
Command response time	80 - 130 ms	
Active stop cut-in time (typical)	< 80 ms	
Active stop cut-in time (maximum)	130 ms	
Passive stop cut-in time	0.5 / 1.2 / 2s	

PERFORMANCE	DIESEL - TR825		DIESEL - WR825	
Tipping load with no bucket ¹	1329 lbs	603 kg	1240 lbs	564 kg
Rated operating capacity (ROC) with no bucket ¹	595 lbs	270 kg	620 lbs	282 kg
Travel speed - default mode (and fast mode)	3.4 m/h (5.8 m/h)	5.4 km/h (9.3 km/h)	4.35 m/h	7 km/h
Fuel capacity	10 gal	38 L	10 gal	38 L
Fuel type	DIESEL		DIESEL	
Machine weight with no bucket ²	2491 lbs	1130 kg	2271 lbs	1030 kg
ENGINE				
Manufacturer	Kubota D902		Kubota D902	
Power rating ³	23.5 hp	17.5 kW	23.5 hp	17.5 kW
Max torque	41.3 ft lbs	56 Nm	41.3 ft lbs	56 Nm
DRIVE SYSTEM				
Throttle control	Remote		Remote	
Tracks with direct drive hydraulic motors	Tracked		Wheeled	
HYDRAULICS				
Gear pump displacement	0.69 cu.in/rev	11.3 cc/rev	0.69 cu.in/rev	11.3 cc/rev
Pump output	10.73 gpm	40.6 lpm	10.73 gpm	40.6 lpm
System pressure	3200 psi	220 bar	3200 psi	220 bar
Hydraulic reservoir capacity	21.1 gal	80 L	21.1 gal	80 L
KANGA BUCKETS				
HD 4in1 bucket capacity (heaped / struck volume) ⁴	4.59 cu ft / 3.36 cu ft (0.13 m ³ / 0.095 m ³)			
DIMENSIONS				
A Height to hinge pin	61.5"	1561 mm	61.25"	1556 mm
B Overall height with no warning lights	42"	1066 mm	41.77"	1061 mm
C Overall length with HD 4in1 bucket	103.3"	2624 mm	103.39"	2626 mm
D Overall track width	41.2"	1046 mm	39.69"	1008 mm
E HD 4in1 bucket width	42.9"	1090 mm	42.91"	1090 mm
F Ground clearance	7.2"	184 mm	7.05"	179 mm

¹ Tipping load and Rated Operating Capacity (ROC) have been determined to ISO 14397-1. This is to represent general loader capabilities, and cannot be used for material load without adjusting for the specific attachment.

² Machine Weight is calculated using no counterweights and no bucket, full fuel tanks, and air-filled tyres.

³ Power Rating is the net power of the production engine only as measured in accordance with SAE J1349 at 3600 RPM. Mass production engines vary from this value. Actual power output for the engine installed in the delivered machine may vary depending on numerous factors. These factors can include operation speed of the engine in the application, environmental conditions, and other variables.

⁴ Volumes based on ISO 7546:1983.

REMOTE CONTROL

VENTED HOOD

Two removable panels have been designed onto the hood assembly. These will allow additional engine bay ventilation when working in extreme heat situations.

FULL-FLOW AUXILIARY HYDRAULICS

Full-flow auxiliary hydraulics with independent spool and cylinder valving. This enables operators to connect hydraulic attachments with extra features; such as brooms with power angle functions.

TWIN HYDRAULIC COOLING FANS

The cooling fans allow the loader to work in confined spaces, at high temperatures. The fans also maintain the hydraulic oil temperature for optimum loader performance.

1978



The original idea which led to the world's first stand-on machine, was originally a motorised wheelbarrow.

1980



By 1980, the concept developed into a walk-behind machine with similar design and styling characteristics, found on modern machines.

1981



The first stand-on machine was introduced to the world. Named the Riga'l Universal Loader, it was powered by an 11hp motor.

1984



The loaders were renamed the Jaden Loader. A larger sized model was released, named the Dingo 1000.

1985



The Jaden Maxi prototype was powered by a 16hp Engine. Only 35 were ever made.

1999



The 5 Series model saw an introduction to soft-touch controls, auxiliary cutout, and redesigned fuel tanks, in preparation for the introduction of tracks.

2000



The 2 Series was released, to align with the original concept of a tight access and affordable earthmoving solution.

2002



The Kid track mini loader was released, as the smallest tracked machine in the world.

2003



6 & 7 Series mini loaders were released. Originally named the Big Foot, due to its 12" wheels, available in a 24hp petrol, or 20hp Diesel engine. The Track machine was named Fat Track.

2006



A new 25hp 2-speed 8 Series loader, featuring an oil cooler, trenching valve, and auto quick-hitch release - The largest and most powerful in the range.

2013



The Kanga 8 Series range, featuring a 25hp diesel motor, was released. Available in wheeled and tracked versions.

2015



Kanga release the Kanga Klean program as an industry-first in emissions reduction.

2016



Kanga release the DT835 as the most powerful Kanga mini loader.

2017



Kanga Loaders launches in North America - USA.

2021



Kanga Loaders celebrates its 40th year anniversary.

AUSTRALIAN MADE QUALITY SINCE 1981

1986



Mk1 - A major chassis design revision was undertaken to increase power and improve poise & balance.

1988



Long range fuel tanks were added over the wheels. Power was increased to 16hp.

1989



3 Series - Optional 10" wheels, larger fuel tanks (which encapsulate the operator), and the iconic green colour were introduced. Received 'Australian International Design' Award.

1996



4 Series - First model with 10" wheels as standard. Petrol and Diesel model options became available.

1997



Kanga begins exports to North America and New Zealand.

2007



6 & 7 Series upgraded to 4-wheel motors, a wider platform, and an increase of performance and comfort. Received 'Innovative Product of the Year' Award.

2008



Remote Loader commences development, and first prototype released.

2009



Kanga Loaders was acquired by Digga Australia. The manufacturing of loaders was moved into the Digga factory.

2010



The Kanga Warrior was released. A cost effective bare-bones model for the weekend warrior.

2011



The Kanga Remote Loader was released, with wheeled and track versions available.

2022



Logo and machine branding modernised.

KANGA LOADERS

MULTI-TASKING MADE EASY

Since being established in 1978 as Jaden Engineering, the Kanga loader has been a source of innovation for the multi-task compact skid steer market. Upholding the highest safety industry standards, starting with the original idea and prototype in 1980, Kanga later developed the first production model in 1981. Kanga Loaders has since become an Australian household name within the mini loader industry.

KANGA

LOADERS



**TURNING HARD WORK
INTO EASY BUSINESS
SINCE 1981**

PHONE 833 30KANGA

EMAIL infous@kangaloader.com



WARRANTY



ENGINE

2 YEARS/UNLIMITED

Diesel engine is covered under the manufacturer's warranty.

COMMERCIAL PRODUCT

5 YEARS

Chassis structure.

2 YEARS/1,000 HOURS

Arm/tilt assembly workmanship and structure.

1 YEAR

Other components and electrical.
Warranty Conditions Apply.

kangaloaderusa.com