



SIPMA S.A.
ul. Budowlana 26
20-469 Lublin, Poland
phone (+48) 81 74 45 071
www.sipma.pl,

BALE WRAPPER
SIPMA OZ 5000 TEKLA
SIPMA OZ 7500 TEKLA



PARTS CATALOGUE

7th Edition - 2014

How to use the catalogue

The catalogue contains tables with figures and texts detailing components and assembly parts. The catalogue should be used in the following manner:

1. determine in what assembly the necessary part is located;
2. find the appropriate assembly drawing and on it the corresponding part;
3. guided by the part number in the figure, find the corresponding drawing or standard number in the table, part name and number of pieces.

Ordering spare parts

Spare parts can be purchased:

1. in online store of SIPMA S.A. (<http://sklep.sipma.pl>) - advantage is the exact location of parts, access to the store at any time and shortest delivery time;
2. directly from the manufacturer;
3. directly from suppliers of machinery.

When ordering spare parts please always specify:

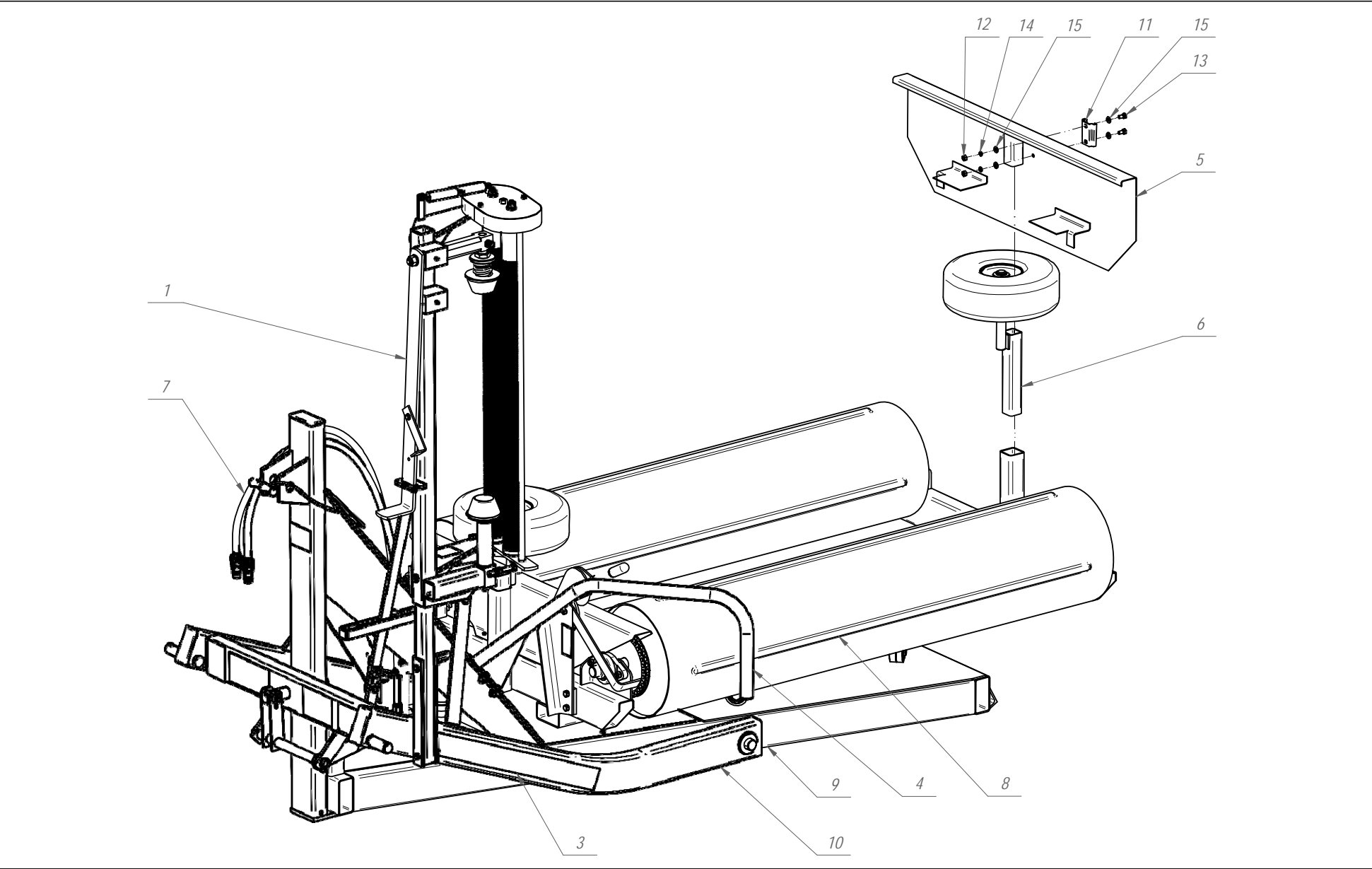
- detailed address of the ordering party;
- machine type, serial number and year of manufacture;
- an exact drawing number of the spare part along with the name and number of units needed.

Only original spare parts ensure matching of the components and long, trouble-free operation.

List of tables

Table 1 1600-910-000.00 Bale wrapper OZ 5000/OZ 7500	6
Table 2 1600-010-500.01 Main frame set	8
Table 3 1600-020-500.01 Lower frame set.....	10
Table 4 1600-030-500.03 Rotating frame set.....	12
Table 5 1600-040-500.01 Foil feeder 500 set	15
Table 6 5281-080-550.31 Foil feeder 500/750 set	18
Table 7 1600-050-500.00 Hydraulic system set.....	21
Table 8 1600-060-500.00 Wheel set.....	23
Table 9 1600-030-750.01 Cutter set.....	23
Table 10 1600-080-510.03 Paint layer.....	25
Table 11 1600-100-500.00 Wraps counter.....	27

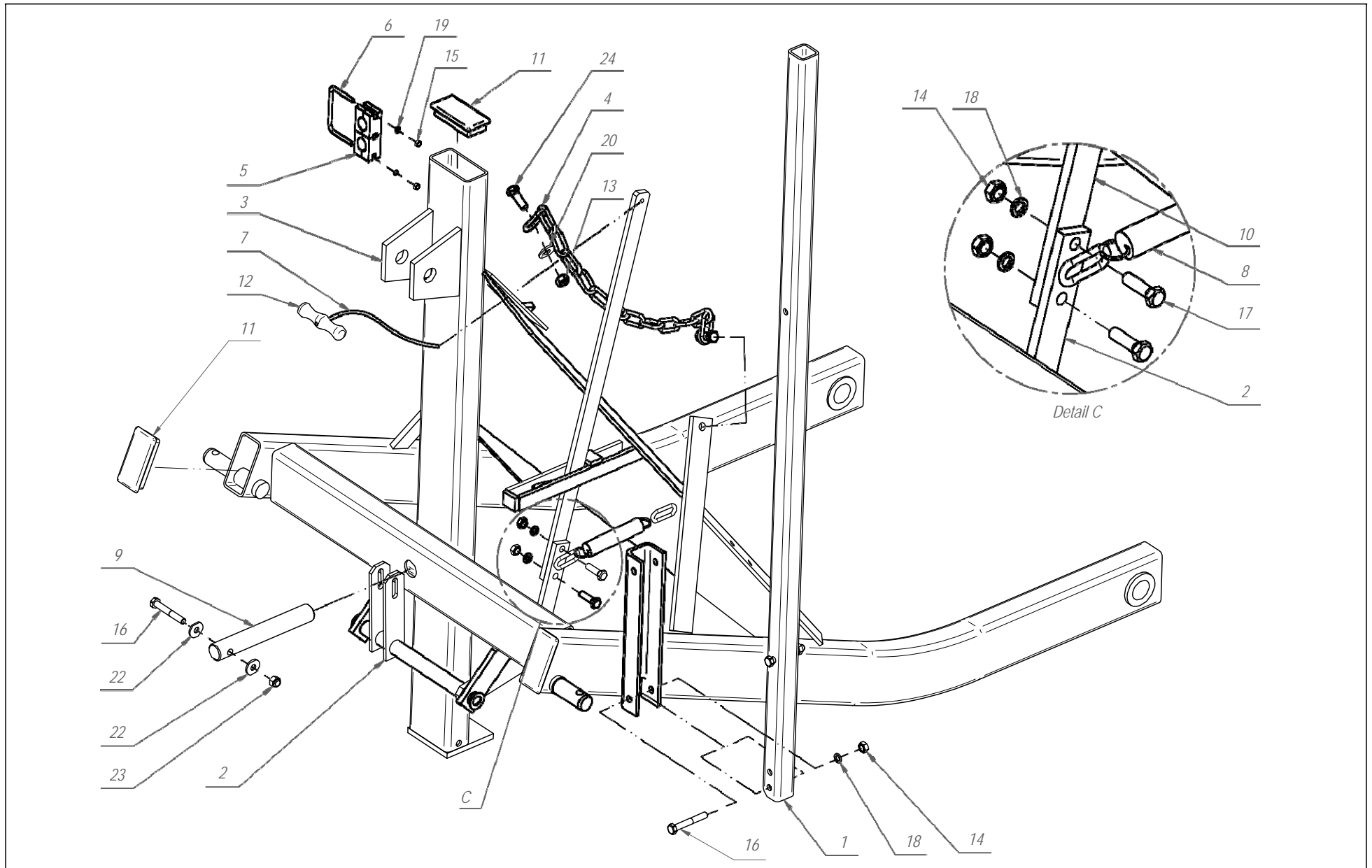
Table 1 1600-910-000.00 Bale wrapper OZ 5000/OZ 7500



1600-910-000.00 Bale wrapper OZ 5000/OZ 7500**Table 1**

No. on the	No. of drawing or norm	Part name	Quantity	Remarks
1	5281-080-550.31	Foil feeder 500/750 set	1	Table 6
	1600-040-500.01	Foil feeder 500 set	1	Table 5
2	1600-100-600.11	Wraps counter set	1	Table 11
3	1600-080-510.03	Painting layer	1	Table 10
4	1600-070-540.10	Barrier	1	
5	1600-070-520.00	Transport cover	1	
6	1600-060-500.00	Wheel set	2	Table 8
7	1600-050-500.00	Hydraulic system set	1	Table 7
8	1600-030-500.03	Rotating frame set	1	Table 4
9	1600-020-500.01	Lower frame set	1	Table 3
10	1600-010-500.01	Main frame set	1	Table 2
11	0656-900-014	Triangle holder	1	
12	0653-523-002	Nut M 8 - 8 - R3J	2	
13	0653-312-014ZN	Bolt M 8 x 16 - 8.8 - R3J	2	
14	0653-191-007ZN	Cup washer Z 8,2 R3J	2	
15	0653-182-061ZN	Washer 8.4 Fe/Zn8	4	

Table 2 1600-010-500.01 Main frame set

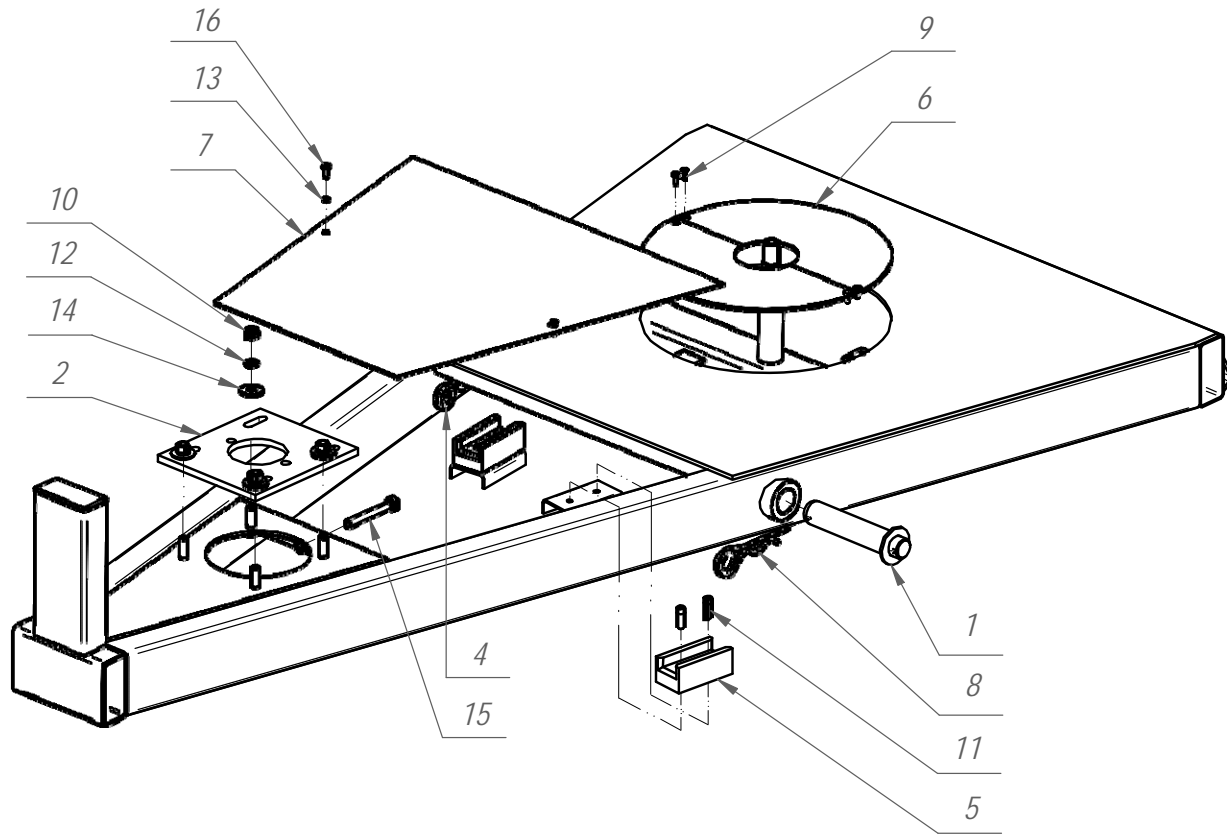


1600-010-500.01 Main frame set

Table 4

No. on the	No. of drawing or norm	Part name	Quantity	Remarks
1	1600-010-580.10	Vertical beam	1	
2	1600-010-520.00	Lever welded	1	
3	1600-010-510.10	Main frame welded	1	
4	1600-010-136.00	Chain	1	
5	1600-010-135.00	Block	4	
6	1600-010-133.00	Connection clip	1	
7	1600-010-132.00	Braided rope stilon Ip 201/5/16 L=2000	1	
8	1600-010-131.00	Latch spring	1	
9	1600-010-126.00	Blocking pin	1	
10	1600-010-122.00	Lever	1	
11	1362-690-031	Square profile square plug 100x50	3	
12	0829-601-191	Handle	1	
13	0653-323-022ZN	Nut M12-8-B	2	
14	0653-322-022ZN	Nut M10-8-B	4	
15	0653-322-007ZN	Nut M6-8-B	2	
16	0653-313-048ZN	Bolt M10x70-8.8-B	3	
17	0653-313-007ZN	Bolt M10x35-8.8-B	2	
18	0653-192-001ZN	Cup washer Z 10.2 Fe/Zn8	4	
19	0653-191-005ZN	Cup washer Z 6.1 A3L	2	
20	0653-183-043ZN	Round washer 13	2	
21	0653-183-005ZN	Washer 17	2	
22	0653-181-020ZN	Round washer 10.5	2	
23	0653-156-022ZN	Self-locking nut M10-8-B- R3J	1	
24	0653-133-161ZN	Bolt M12x35-8.8-B	2	

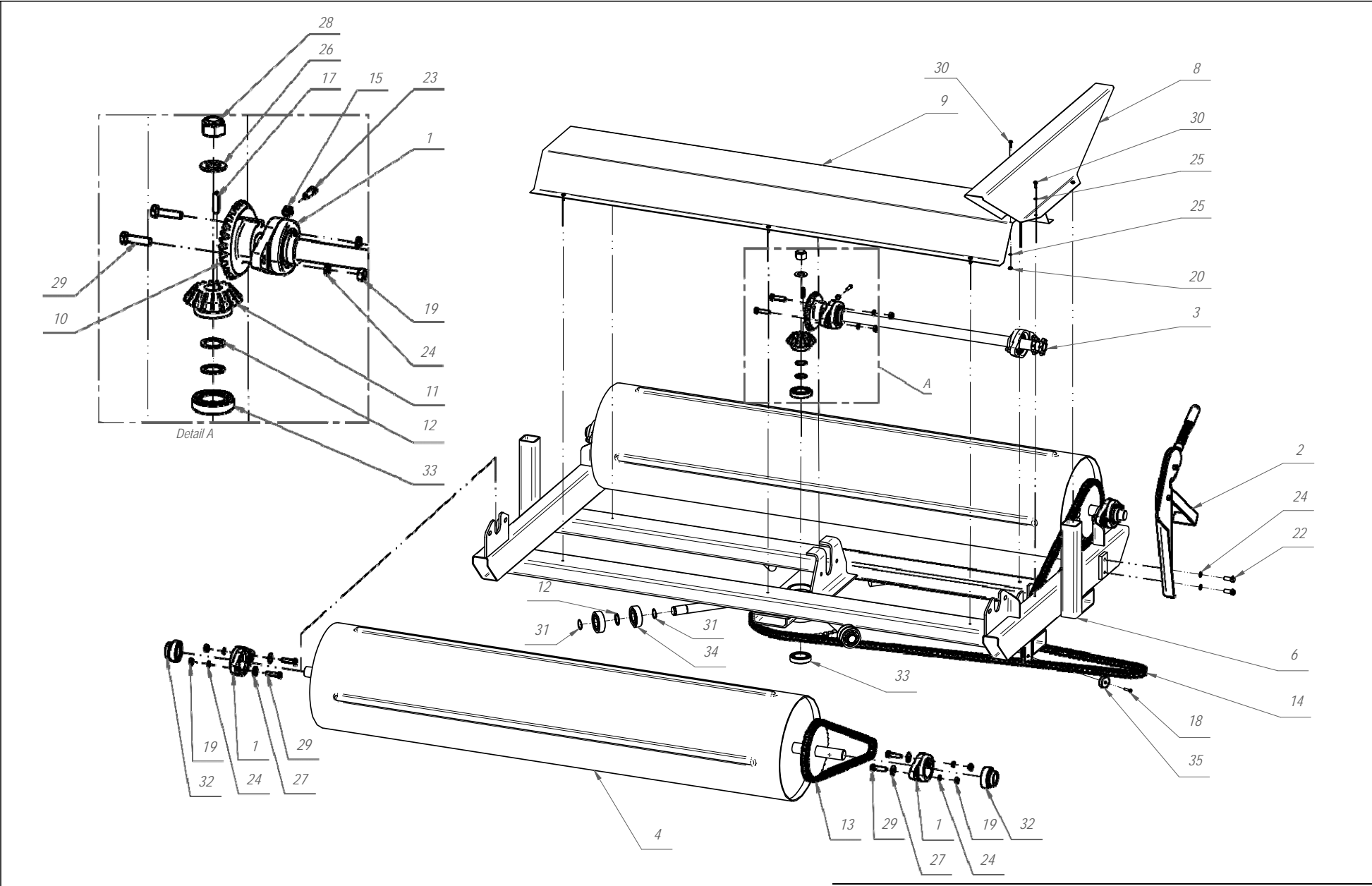
Table 3 1600-020-500.01 Lower frame set



1600-020-500.01 Lower frame set**Table 3**

No. on the	No. of drawing or norm	Part name	Quantity	Remarks
1	1600-020-530.00	Pin welded	2	
2	1600-020-520.00	Plate set	1	
3	1600-020-510.00	Lower frame welded	1	
4	1600-020-130.00	Left pin	1	
5	1600-020-127.00	Chain guide	2	
6	1600-020-117.01	Semi-circular cover	2	
7	1600-020-102.00	Trapezoid cover	1	
8	089-000992-0.331	Plug 6.5-Zn	1	
9	0653-512-078ZN	Screw M6x16-8.8-B Fe-Zn8	4	
10	0653-323-022ZN	Nut M12 - 8 - R3J	4	
11	0653-312-077ZN	Bolt M8x40-8.8-B-Fe/Zn8	4	
12	0653-192-003ZN	Cup washer Z 12.2 R3J	4	
13	0653-191-005ZN	Cup washer Z 6.1 R3J	2	
14	0653-183-043ZN	Round washer 13 Fe/Zn8	4	
15	0653-138-008ZN	Bolt M12 x 90 - 8.8 - A3L	1	
16	0653-132-047ZN	Bolt M 6 x 16 - 8,8 - R3J	2	

Table 4 1600-030-500.03 Rotating frame set



1600-030-500.03 Rotating frame set

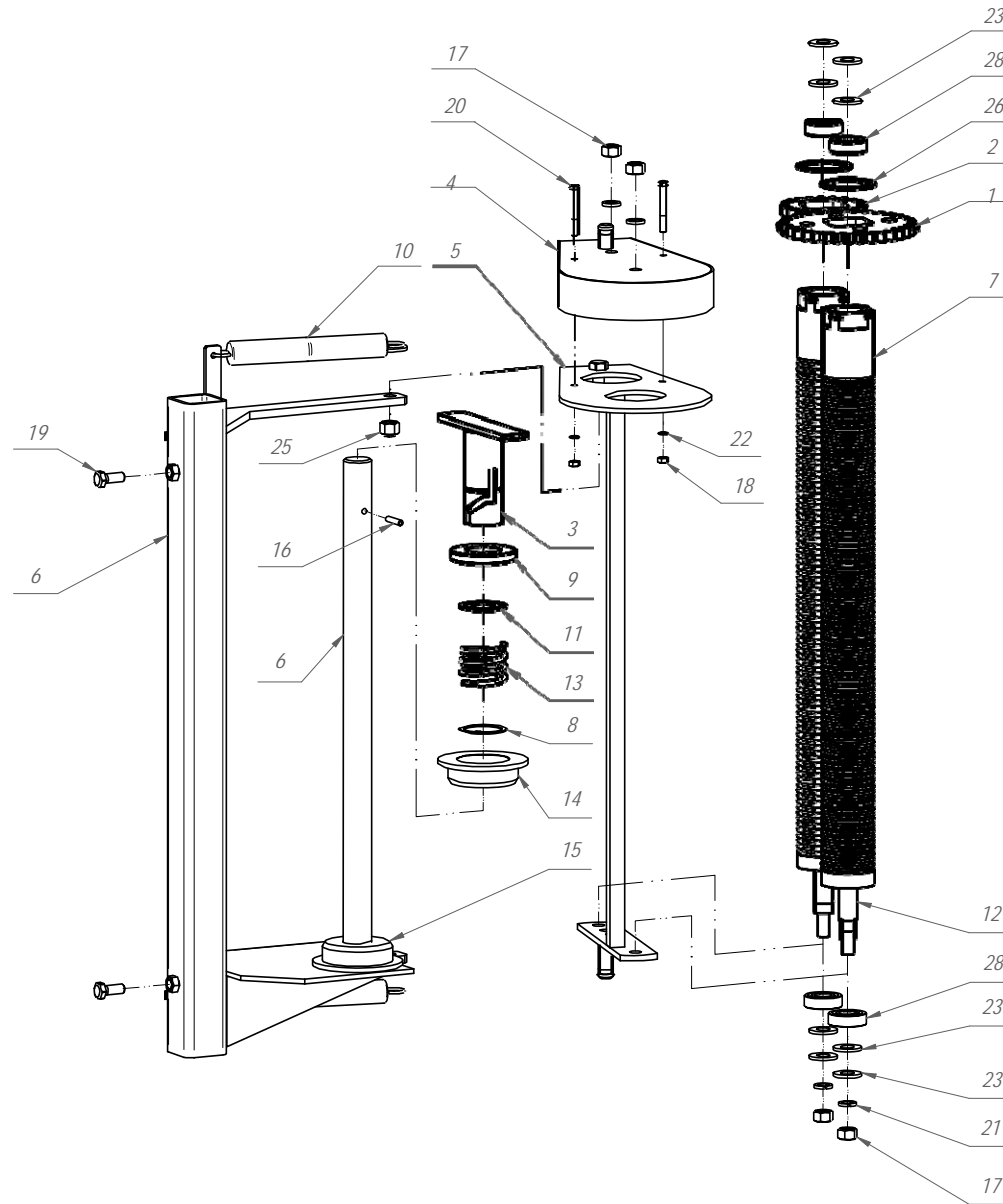
Table 4

No. on the	No. of drawing or norm	Part name	Quantity	Remarks
1	5261-010-001.00	Bearing retainer O-206	6	
2	1600-030-750.01	Cutter set	1	Table 9
3	1600-030-540.00	Drive shaft welded	1	
4	1600-030-530.02	Cylinder II welded	1	
5	1600-030-520.02	Cylinder I welded	1	
6	1600-030-510.10	Rotating frame	1	
7	1600-030-141.00	Special washer	1	
8	1600-030-112.02	Cover	1	
9	1600-030-110.01	Longitudinal cover	1	
10	1600-030-102.00	Bevel gear z=25	1	
11	1600-030-101.10	Bevel gear z=17	1	
12	089-000712-0.213	Washer 25x35x1	6	
13	0829-601-068	Chain 10B 76 PS	2	
	0829-601-205	Chain 10B 68 PS	2	
14	0829-405-162	Chain 10B 170 PS	1	
15	0653-523-002	Nut M 8 - 8 - R3J	1	
16	0653-513-052	Parallel key A8x7x40	1	
17	0653-513-035	Parallel key A8x7x30	1	
18	0653-331-903ZN	Screw M 5x25-8.8-B Fe-Zn8	1	
19	0653-322-022ZN	Nut M10 - 8 - R3J	12	
20	0653-322-007ZN	Nut M 6 - 8 - R3J	2	
21	0653-321-003ZN	Nut M5-8-B-Fe/Zn8	1	

1600-030-500.03 Rotating frame set**Table 4**

22	0653-313-009ZN	Bolt M10 x 25 - 8,8 - R3J	2	
23	0653-312-031ZN	Press bolt M8x25 Fe-Zn8	1	
24	0653-192-001ZN	Cup washer Z 10,2 Fe/Zn8	14	
25	0653-191-005ZN	Cup washer Z 6.1 R3J	10	
26	0653-183-054ZN	Washer 20 - A3L	1	
27	0653-181-020ZN	Round washer 10.5	8	
28	0653-156-016ZN	Self-locking nut M20 - 8 - A3L	1	
29	0653-132-099ZN	Bolt M10 x 40 - 8,8 - R3J	12	
30	0653-132-047ZN	Bolt M 6 x 16 - 8,8 - R3J	10	
31	0639-361-010	Spring stopper ring Z 25	8	
32	0631-213-023	Self-aligning bearing D 206	6	
33	0631-113-103	Bearing 6007-2RS	2	
34	0631-113-013	Bearing 6305-2RS	8	
35	0542-990-001	Magnet FS-25 (34x10.5x5.5)	1	

Table 5 1600-040-500.01 Foil feeder 500 set



1600-040-500.01 Foil feeder 500 set

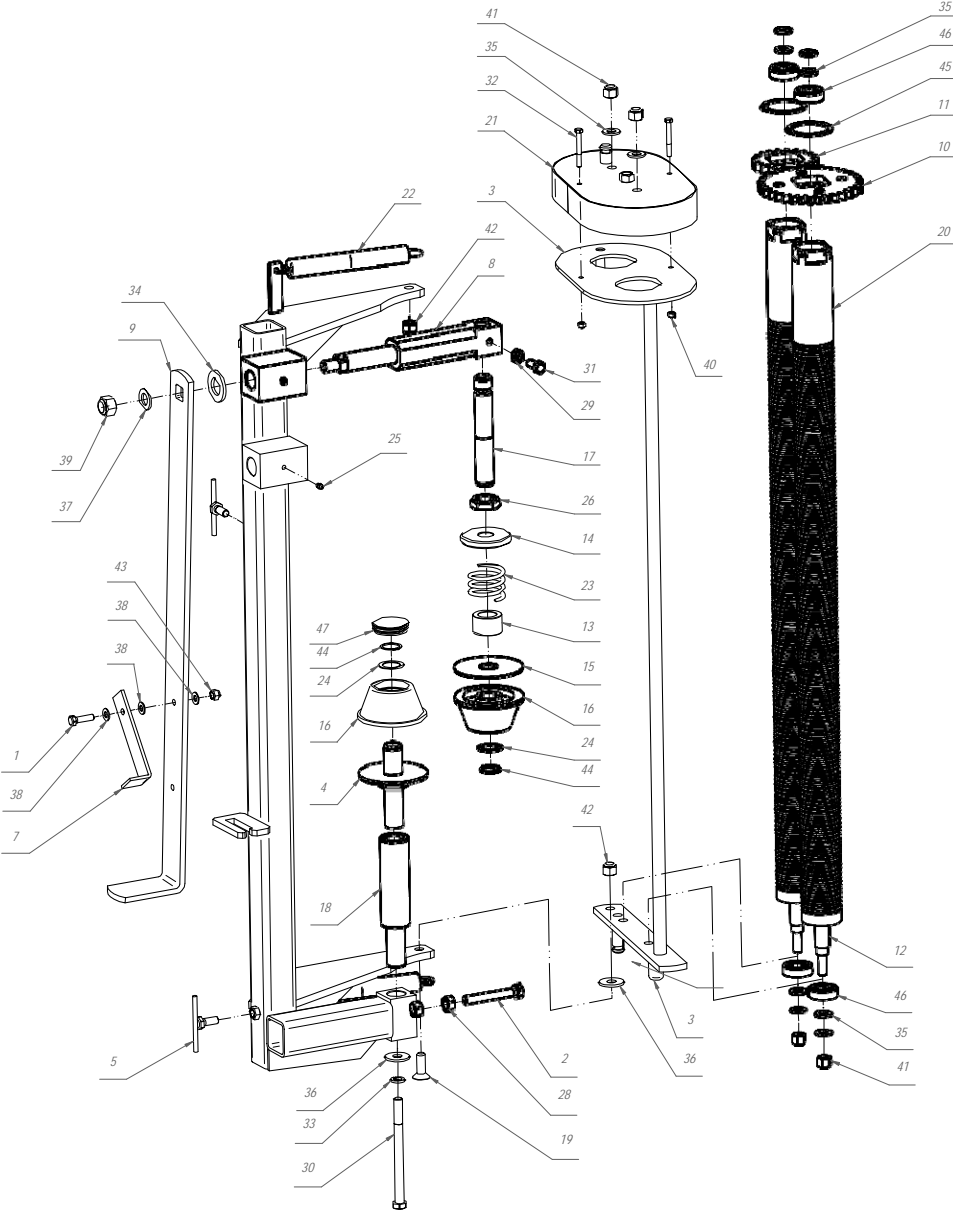
Table 5

No. on the	No. of drawing or norm	Part name	Quantity	Remarks
1	5281-080-345.00	Cylinder gear wheel	1	
2	5281-080-344.00	Cylinder gear wheel	1	
3	1600-040-580.10	Welded holders	1	
4	1600-040-560.00	Welded cover	1	
5	1600-040-530.00	Welded roller support set	1	
6	1600-040-510.01	Welded feeder frame set	1	
7	1600-040-216.00	Rolled aluminium roller	2	
8	1600-040-135 00	Special washer	1	
9	1600-040-133.00	Nut	1	
10	1600-040-130.00	Feeder spring	2	
11	1600-040-122.00	Washer	1	
12	1600-040-110.01	Roller	2	
13	1600-040-105.10	Spring	1	
14	1600-040-103.10	Disk II	1	
15	1600-040-102.01	Disk I	1	
16	0653-512-111	Spring-type straight	1	
17	0653-323-022ZN	Nut M12 - 8 A3L	4	
18	0653-322-007ZN	Nut M 6 - 8 - A3L	2	
19	0653-313-009ZN	Bolt M10 x 25 - 8.8 - A3L	2	
20	0653-312-046ZN	Bolt M 6 x 50 - 8,8 - R3J	2	
21	0653-192-003ZN	Cup washer Z 12,2 Fe/Zn8	4	
22	0653-191-005ZN	Cup washer Z 6.1 A3L	2	
23	0653-183-147ZN	Washer 13 - A3L	8	

1600-040-500.01 Foil feeder 500 set**Table 5**

24	0653-183-043ZN	Washer 12 - A3L	1	
25	0653-156-015ZN	Self-locking nut M12 - 8 - A3L	1	
26	0639-361-054	Spring stopper ring W 55	2	
27	0639-361-016	Spring stopper ring Z 38	1	
28	0631-114-049	Bearing 6203-2RS	4	

Table 6 5281-080-550.31 Foil feeder 500/750 set



5281-080-550.31 Foil feeder 500/750 set

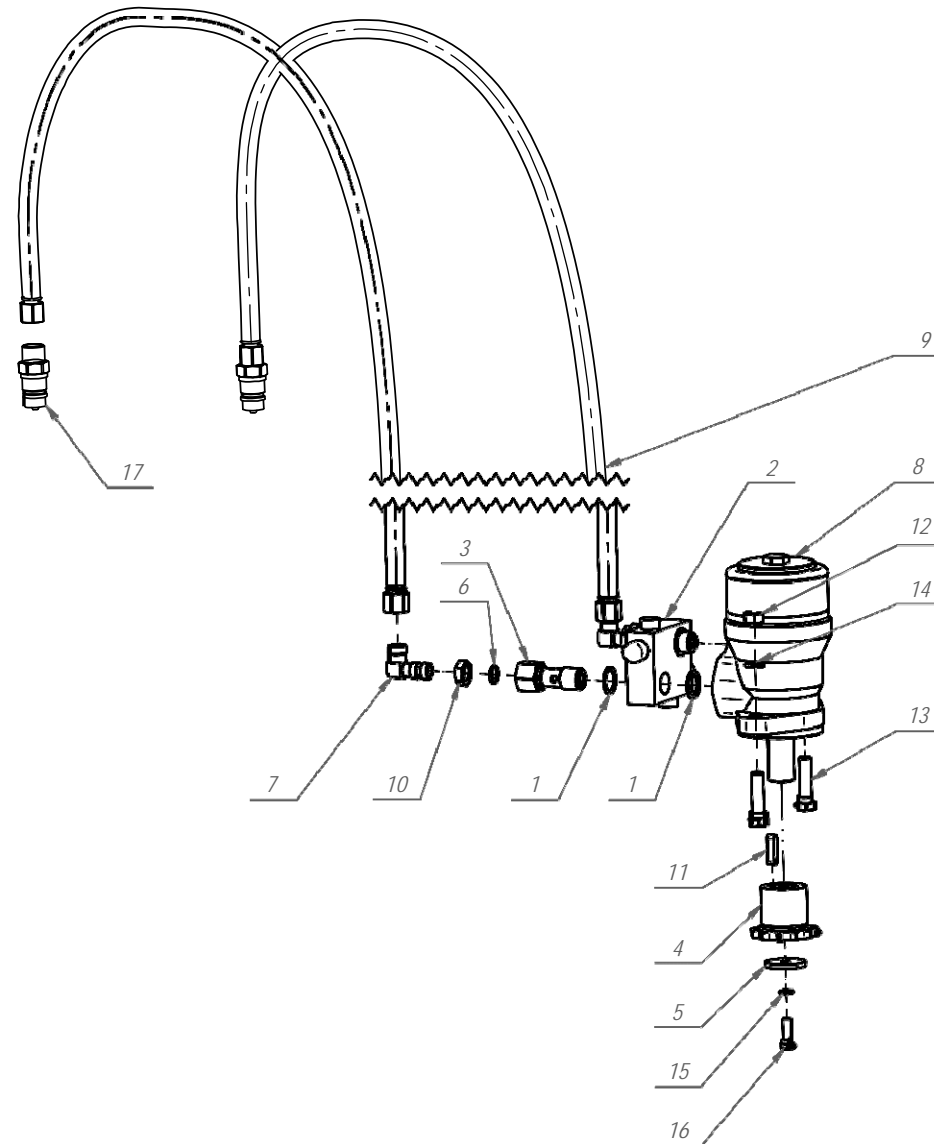
Table 6

No. on the	No. of drawing or norm	Part name	Quantity	Remarks
1	PN-M-82105	Bolt M8x30-8.8-B-Fe-Zn8	1	
2	PN-M-82105	Bolt M12x80-8.8-B-Fe/Zn8	1	
3	5281-080-750.11	Welded roller	1	
4	5281-080-730.00	Welded roller bar	1	
5	5281-080-580.00	Welded bolt M10	2	
6	5281-080-560.40	Welded feeder frame	1	
7	5281-080-423.10	Pawl plate	1	
8	5281-080-402.00	Lever pin	1	
9	5281-080-401.10	Lever	1	
10	5281-080-345.00	Cylinder gear wheel	1	
11	5281-080-344.00	Cylinder gear wheel	1	
12	5281-080-343.00	Roller	2	
13	5281-080-315.00	Sleeve	1	
14	5281-080-314.00	Nut	1	
15	5281-080-313.00	Sliding washer	1	
16	5281-080-312.00	Roller	2	
17	5281-080-311.00	Upper roller bar	1	
18	5281-080-151.00	Distance sleeve	1	
19	5224-088-126.00	Bolt	1	
20	3600-080-180.00	Rolled aluminium roller	2	
21	1600-040-660.00	Welded cover	1	
22	1600-040-130.00	Feeder spring	2	
23	1600-040-105.10	Spring	1	

5281-080-550.31 Foil feeder 500/750 set**Table 6**

24	089-000712-0.213	Washer 25x35x1	2	
25	0659-000-003	Grease nipple StM6x1	2	
26	0653-524-020ZN	Nut M24-8-B	1	
27	0653-332-068ZN	Screw H M6x 8-8,8-B Fe/Zn8	2	
28	0653-323-022ZN	Nut M12-8-B Fe/Zn8	1	
29	0653-322-022ZN	Nut M10 - 8 - A3L	1	
30	0653-313-031ZN	Bolt M12x150-8.8-B-Fe/Zn8	1	
31	0653-313-009ZN	Bolt M10 x 25 - 8.8 - A3L	1	
32	0653-312-046ZN	Bolt M6x50-8.8-B-Fe/Zn8	2	
33	0653-192-003ZN	Cup washer Z 12,2 Fe/Zn8	1	
34	0653-183-048ZN	Washer 25 Fe/Zn8	1	
35	0653-183-047ZN	Washer 13 R3J	10	
36	0653-183-043ZN	Round washer 13 Fe/Zn8	3	
37	0653-183-005ZN	Washer 17 R3J	1	
38	0653-182-061ZN	Washer 8,4 Fe/Zn8	3	
39	0653-156-019ZN	Self-locking nut M16-8-B R3J	1	
40	0653-156-018ZN	Self-locking nut M6 - 8 - A3L	2	
41	0653-156-015ZN	Self-locking nut M12 - 8 - A3L	4	
42	0653-156-015ZN	Self-locking nut M12-8-B R3J	2	
43	0653-156-014ZN	Self-locking nut M8-8-B Fe/Zn8	1	
44	0639-361-010	Spring stopper ring Z 25	2	
45	0639-361-006	Spring stopper ring Z 55	2	
46	0631-114-049	Bearing 6203-2RS	4	
47		Insert for pipe	1	

Table 7 1600-050-500.00 Hydraulic system set



1600-050-500.00 Hydraulic system set**Table 7**

No. on the	No. of drawing or norm	Part name	Quantity	Remarks
1	5270-120-119.00	Washer 1/2"	4	
2	1600-050-510.00	Special valve set	1	
3	1600-050-100.01	Special connector	2	
4	1600-020-540.00	Wheel z=12 set	1	
5	1600-020-123.00	Washer 9x40x4	1	
6	1373-119-046	Seal ring 13.3x2.4	2	
7	0876-821-003	Body of stud elbow 16-10	2	
8	0876-310-004	Hydraulic engine OMR 200	1	
9	0829-405-051	Flexible pipe AA-10-2000-10/13	2	
10	0829-401-155	Counter nut M16x1.5	2	
11	0653-513-106	Parallel key A8x7x30	1	
12	0653-323-022ZN	Nut M12 - 8 A3L	2	
13	0653-313-071ZN	Bolt M12 x 45 - 8.8 - A3L	2	
14	0653-192-003ZN	Cup washer Z 12.2 A3L	2	
15	0653-191-007ZN	Cup washer Z 8,2 Fe/Zn8	1	
16	0653-132-073ZN	Bolt M 8 x 25 - 8.8 - R3J	1	
17	0643-420-019	Quick release coupling plug M22x1.5 CNV 08 2/2215M	2	

Table 8 1600-060-500.00 Wheel set

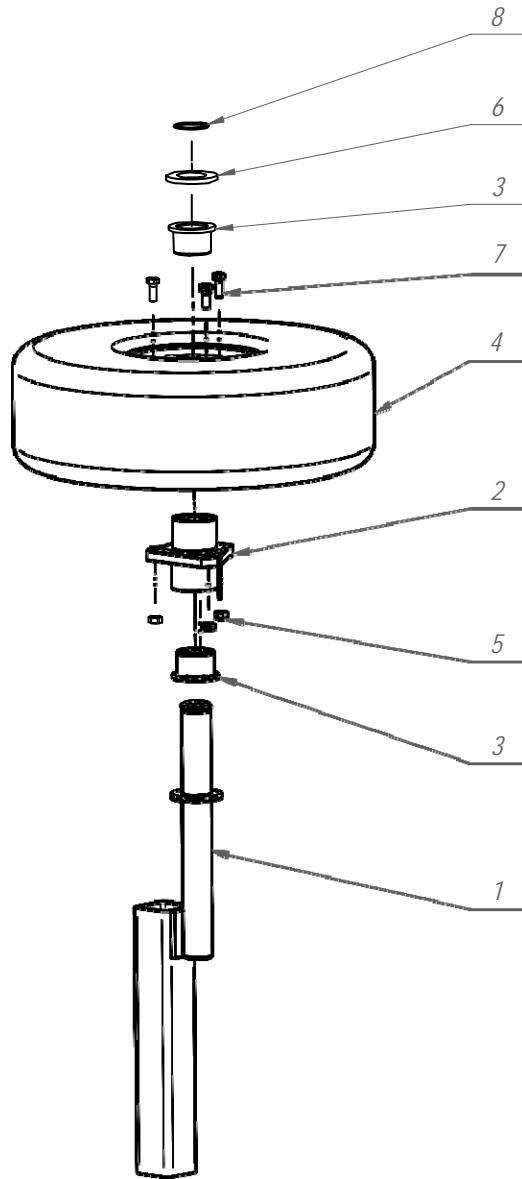
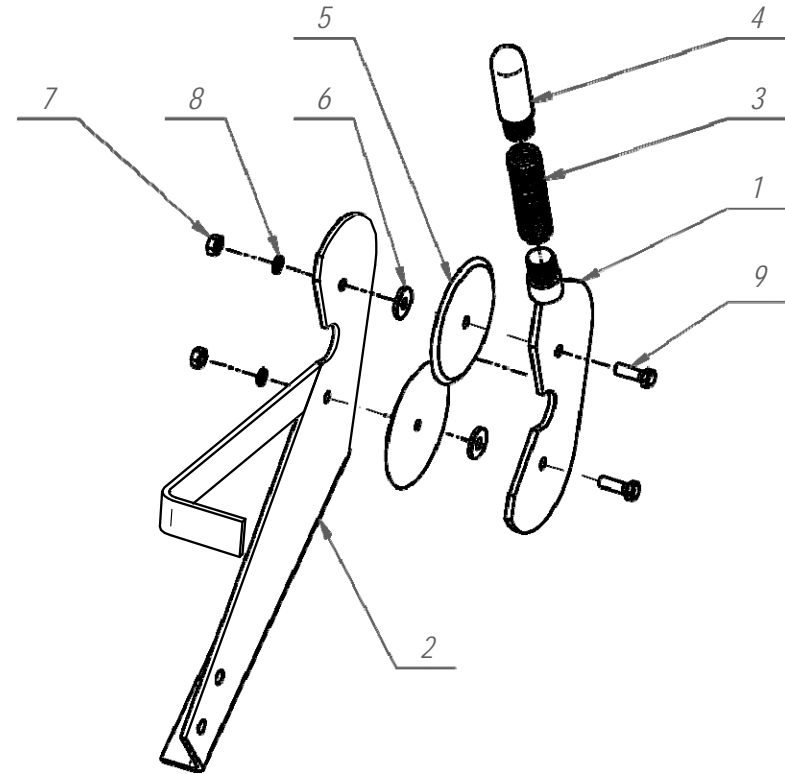


Table 9 1600-030-750.01 Cutter set



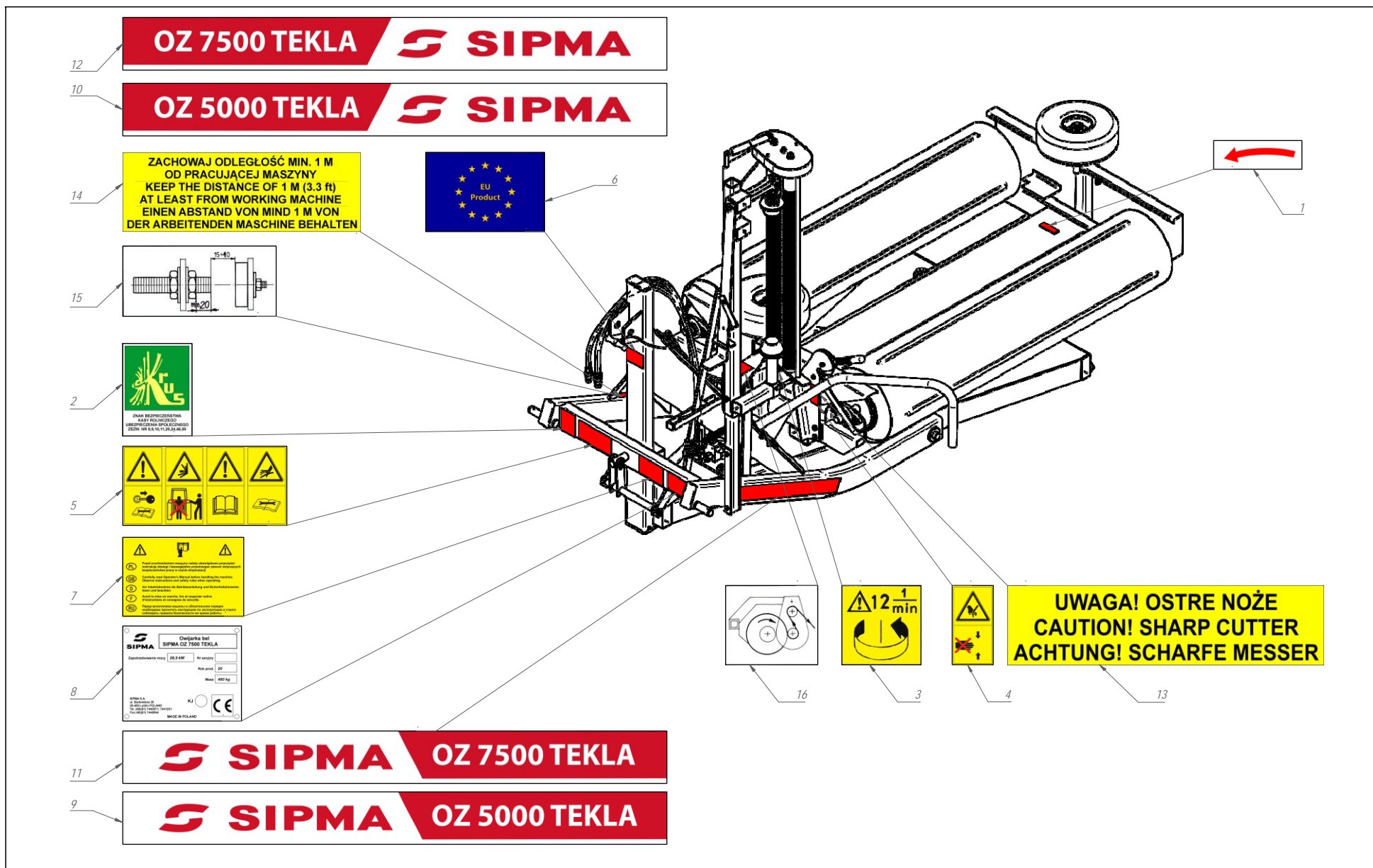
1600-060-500.00 Wheel set**Table 8**

No. on the	No. of drawing or norm	Part name	Quantity	Remarks
1	1600-060-520.00	Welded wheel	1	
2	1600-060-510.01	Welded hub	1	
3	1-1322-169-147.00	Sleeve	2	
4	0829-601-012	Wheel 4.00x4" 2PR set	1	
5	0653-322-007ZN	Nut M 6 - 8 - R3J	3	
6	0653-183-048ZN	Washer 25 - R3J	1	
7	0653-132-047ZN	Bolt M 6 x 16 - 8,8 - R3J	3	
8	0639-361-010	Spring stopper ring Z 25	1	

1600-030-750.01 Cutter set**Table 9**

No. on the	No. of drawing or norm	Part name	Quantity	Remarks
1	1600-030-770.00	Welded knife cover	1	
2	1600-030-760.00	Welded support	1	
3	1600-030-149.00	Cutter spring	1	
4	1600-030-148.00	Cutter bar	1	
5	1600-030-126.00	Cutter circular knife	2	
6	089-000709-1.082	Washer	2	
7	0653-523-002	Nut M 8 - 8 - R3J	2	
8	0653-191-007ZN	Cup washer Z 8,2 R3J	2	
9	0653-132-073ZN	Bolt M 8 x 25 - 8,8 - R3J	2	
1	1600-030-770.00	Welded knife cover	1	

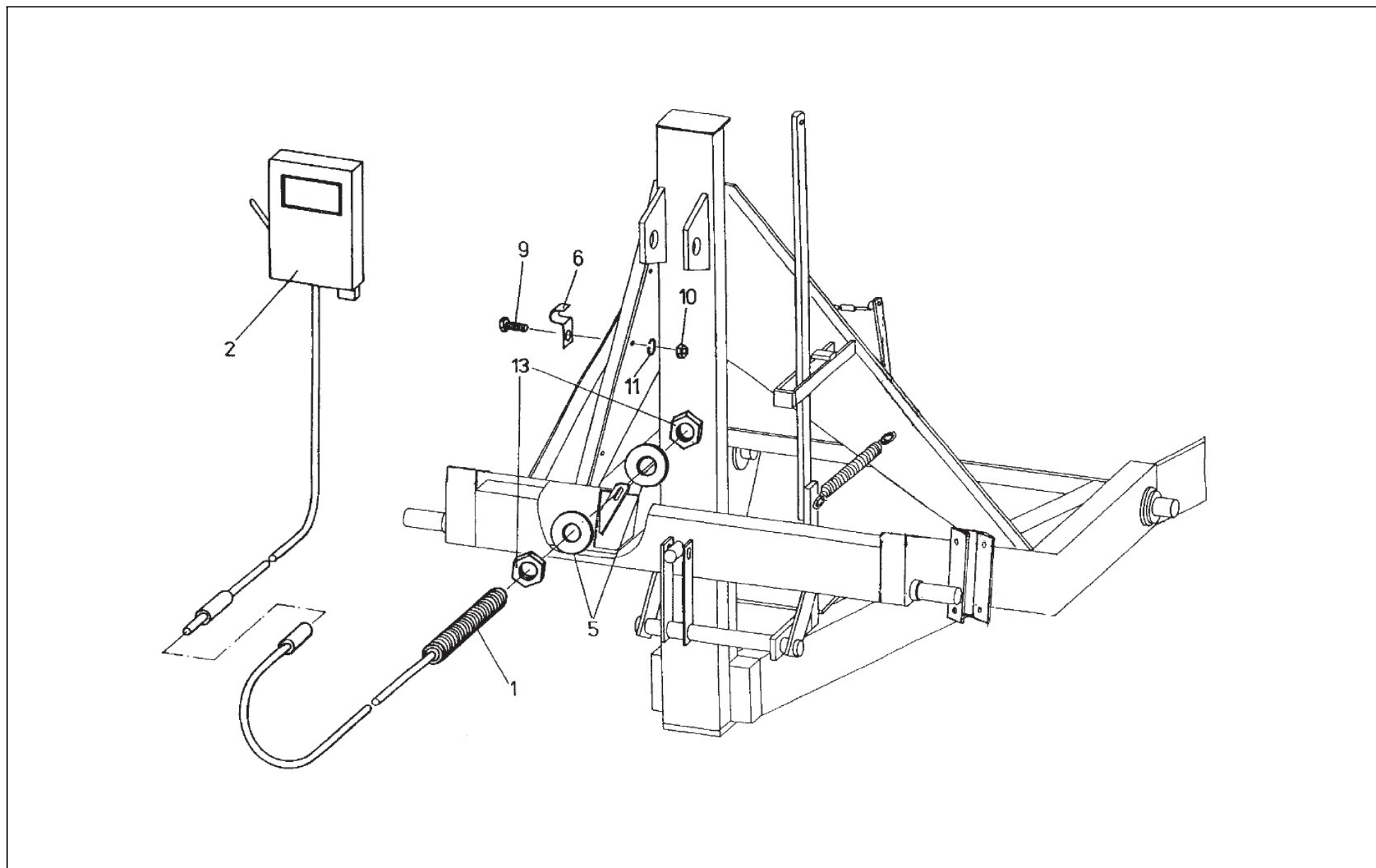
Table 10 1600-080-510.03 Paint layer



1600-080-510.03 Paint layer**Table 10**

No. on the	No. of drawing or norm	Part name	Quantity	Remarks
1	8730-000-120.00	Label	2	
2	5374-100-318.00	KRUS [ASIF] safety sign	1	
3	5281-160-108.00	Warning label III	1	
4	5281-160-106.00	Warning label I	1	
5	5279-170-119.00	Joint label - suspension	1	
6	5276-170-243.01	EU Product	1	
7	5276-170-225.11	Label - read the instructions carefully	1	
8	1600-080-125.00	Company plate	1	
9	1600-080-123.00	Label OZ 5000 L	1	only OZ 5000
10	1600-080-122.00	Label OZ 5000 P	1	only OZ 5000
11	1600-080-121.00	Label OZ 7500 L	1	only OZ 7500
12	1600-080-119.00	Label OZ 7500 P	1	only OZ 7500
13	1600-080-107.01	Label VII	1	
14	1600-080-106.01	Label VI	1	
15	1600-080-105.20	Label V	1	
16	1600-080-104.00	Label IV	1	

Table 11 1600-100-500.00 Wraps counter



1600 -100-500.00 Wraps counter**Table 11**

No. on the	No. of drawing or norm	Part name	Quantity	Remarks
1	1600-100-610.30	Reed-relay sensor SNAP-IN	1	
2	2600-100-610.00	SNAP-IN counter	1	
3				
4				
5	089-000709-1.123	Washer 13x23x2 - Zn	2	
6	089-002550-0.062	Handle	3	
7				
8				
9	0653-132-047ZN	Bolt M6x16-8.8-B-A3L	3	
10	0653-322-007ZN	Washer M6-8-B-A3L	3	
11	0653-191-005ZN	Cup washer Z 6.1-A3L	3	
12				
13	0653-323-022ZN	Washer M12-5-B-A3L	2	