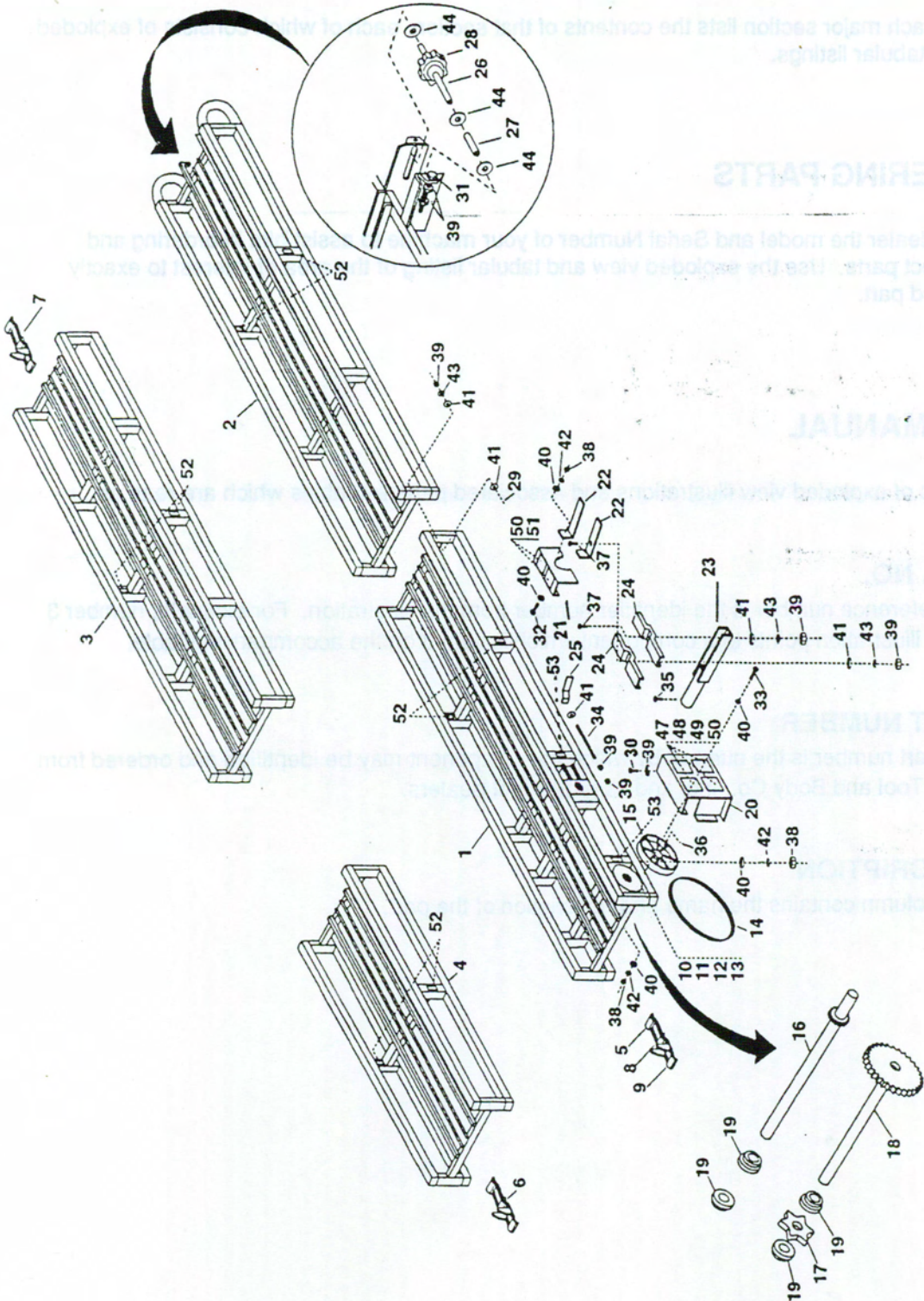


417-020 DELUXE BALE CONVEYOR

PARTS LIST



417-020 DELUXE BALE CONVEYOR

REF NO.	PART NO.	DESCRIPTION	QTY
1	417-345	Frame, Drive - 8'	1
2	417-364	Frame, Idler - 8'	1
3	417-347	Frame, Intermediate - 8'	
4	417-348	Frame, Intermediate - 4'	
5	417-195	Chain, Drag - #55 x 223 Links (for 16' Conveyor)	
6	417-204	Chain, Drag - #55 x 59 Links (for 4' Intermediate Section)	
7	417-205	Chain, Drag - #55 x 118 Links (for 8' Intermediate Section)	
8	417-210	Link, Drag Chain - #55 HB4	
9	417-206	Link, Drag Chain - #55	
10	494-674	Chain, Roller - #40-45 Pitch	
11	423-163	Link, Chain Connecting - #40	
12	423-165	Link, Chain Repair - #40	
13	423-164	Link, Chain Repair Offset - #40	
14	417-102	Belt, A-Section - 56"	1
15	417-108	Pulley, 1" Bore x 10" O.D.	1
16	417-386	Shaft, w/40A12 Sprocket - 1" O.D. x 16"	1
17	417-112	Sprocket Drive - #451	1
18	417-387	Shaft, w/40A38 Sprocket - 1" O.D. x 13-7/8"	1
19	417-113	Bearing - 1" #F-16-32	4
20	417-292	Shield, Pulley	1
21	417-293	Shield Motor Pulley	1
22	417-294	Link, Motor Shield Mounting	2
23	417-169	Bracket, Motor Mounting	1
24	417-114	Channel, Motor Mount	2
25	405-201	Handle, Locking	1
26	417-104	Shaft, Idler - 3/4 x 5-3/4"	1

417-020 DELUXE BALE CONVEYOR (Cont'd)

REF NO.	PART NO.	DESCRIPTION	QTY
27	417-105	Spacer, Idler - 1" O.D. x 1-3/4"	1
28	417-111	Sprocket, Idler - #452	1
29	490-028	Screw, Hex Hd. Cap NC - 3/8 x 2-3/4" Gr. 5	6
30	490-322	Screw, Rd. Hd. Machine NC - 3/16 x 2"	2
31	490-813	Screw, Hex Hd. Cap NC - 3/8 x 3" Gr. 5 (F.T.)(Also 490-029)	2
32	490-320	Screw, Rd. Hd. Machine NC - 3/16 x 1/2"	1
33	490-326	Screw, Rd. Hd. Machine NC - 3/16 x 1-1/2"	2
34	417-168	Screw, Motor Adjusting - 3/8 x 6"	1
35	490-501	Screw, Sq. Hd. Set NC - 3/8 x 5/8"	2
36	490-502	Screw, Allen Hd. Set NC - 5/16 x 3/4"	NOTE
37	490-023	Screw, Hex Hd. Cap NC - 3/8 x 2" Gr. 5	2
38	491-033	Nut, Reg. Hex - 3/16" NC	5
39	491-003	Nut, Reg. Hex 3/8" NC	17
40	491-088	Washer, Flat - 3/16"	10
41	491-061	Washer, Flat - 3/8"	15
42	491-093	Washer, Lock - 3/16"	5
43	491-071	Washer, Lock - 3/8"	15
44	491-051	Bushing, Machine 3/4" x 18 Ga.	5
47	127311	Decal, Caution	1
48	127314	Decal, Danger, Electrocutation Hazard - Power Lines	1
49	127313	Decal, Danger, Upending Hazard	1
50	127312	Decal, Warning, Rotating Part Hazard	2
51	127316	Decal, Danger, Electrocutation Hazard - Hand	1
52	127315	Decal, Warning, Drag Chain Hazard	4
53	127318	Decal, Warning, Missing Guard Hazard	2

NOTE: Ref. No. 36 is a part of Ref. No.15 and is 1 each