

# FERRI<sup>®</sup>

**HEDGE TRIMMER**  
with cutterbar for topping  
and trimming hedges

**T350S** **T350SI**



# T350S

# T350SI

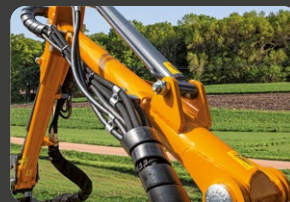
Ideal for working in confined spaces and for the horizontal and vertical hedge trimming. Extremely versatile, it can work on the right or on the left hand side of the tractor. Designed for compact tractors. The T350SI is equipped with a fully independent hydraulic system.



## HEDGE TRIMMER with cutterbar for topping and trimming hedges



STC (Self Tilt Control) automatic recognition of the vertical and / or horizontal cutter bar position and self-maintenance of the acquired position by means of a button placed on the joystick.  
(Standard with SP Tronic Controls - T350SI)



Arms with circular section H.T.R. (High Torsion Resistance)



Dependent hydraulic system (T350S).

# FERRI®



**classic**

Cable controls



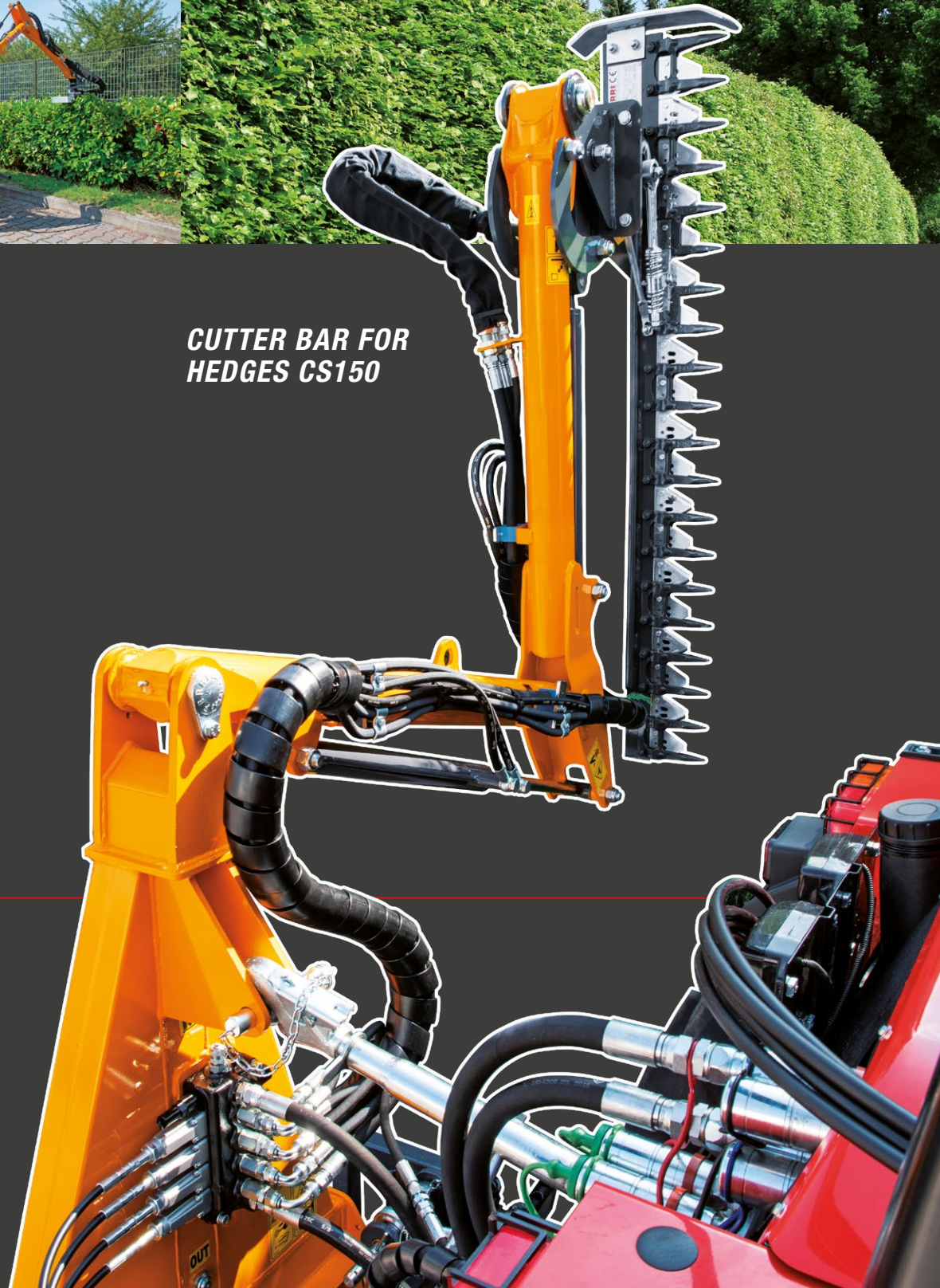
**SP-Tronic**

Simple Proportional Tronic (T350SI)



Independent hydraulic system (T350SI).

**CUTTER BAR FOR HEDGES CS150**



# T350S T350SI


## HEDGE TRIMMER with cutterbar for topping and trimming hedges



Technical data		T350S	T350SI
<b>Model</b>		<b>FARM</b>	<b>FARM</b>
Max horizontal reach*	ft	11'10"	11'10"
3 Points Linkage	Cat.	I - II	I - II
Weight	lbs	507	705
Pressure	psi	2030	-
Required oil flow	gal/min	5.90	-
Rotor	Rpm	-	-
Flail Head angle		228°	228°
Max Vertical height		15'3"	15'3"

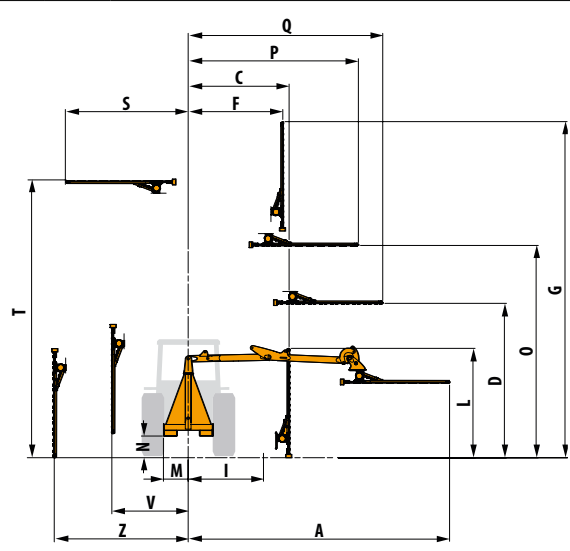
\* Reach measured from tractor centre line to head edge.

Cutter bar for hedges		CS 150
Rod lenght	ft	4'11"
Weight	lbs	110
Max. cutting width	∅	1/2"



Tractor										
<b>HP</b>	15	20	25	30	35	40	45	50	Min. Tractor weight	Min. Tractor width
<b>T350S</b>									1543 lbs	3'3" ft
<b>T350SI</b>									1984 lbs	3'3" ft

Working positions (ft)		T350S - T350SI
<b>A</b>	ft	11'11"
<b>C</b>	ft	4'7"
<b>D</b>	ft	7'0"
<b>F</b>	ft	4'4"
<b>G</b>	ft	15'3"
<b>I</b>	ft	3'7"
<b>L</b>	ft	4'12"
<b>M</b>	ft	1'2"
<b>N</b>	ft	0'12"
<b>O</b>	ft	9'8"
<b>P</b>	ft	7'9"
<b>Q</b>	ft	8'10"
<b>S</b>	ft	5'8"
<b>T</b>	ft	12'10"
<b>V</b>	ft	4'2"
<b>Z</b>	ft	6'8"



All data subject to change campbelladv.com 59220 T350S/T350SI - USA - EN Rev.0 - 200

www.ferri-america.com



**FERRI srl**  
Via Govoni, 30  
44034 Tamara (FE) Italy  
Tel. +39 0532 866866  
Fax +39 0532 866851  
info@ferri-srl.it - www.ferri-srl.it



**North America Sales and Marketing Manager / FERRI**  
**Kent Zimmerman**  
Cell (402) 677-3424  
k.zimmerman@ferri-srl.it

**Parts Stock / FERRI:**  
J.S. Woodhouse Co., Inc. - 1314 Union Street  
P.O. Box 1169 - West Springfield, Ma. 01090 U.S.A.  
tel. 413-736-5462 - fax 413-732-3786  
info@jswoodhouse.com