

GASPARDO

MOD. FBR



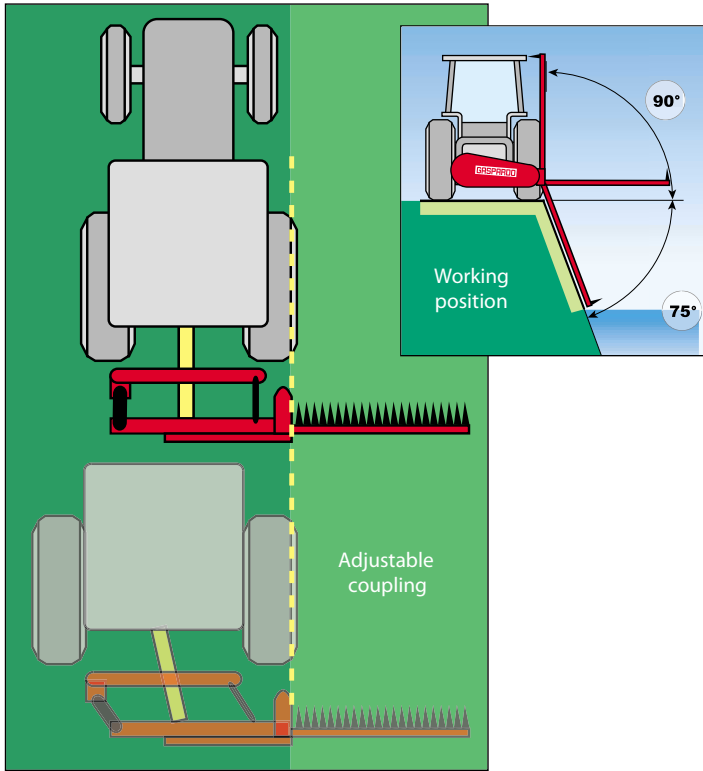
Mower with double connecting-rod and adjustable coupling for tractors with minimum 25 HP and 540 rpm P.T.O. shaft. Gaspardo sickle mowers use a double action tooth-blade combination to increase cutting speed. Increased blade speed allows for a cleaner, more efficient cut on any type of grass. The unique tooth-blade motion guarantees even damp or layed over material be cut cleanly. Machine configuration minimizes cutter bar contact with soil.

Standard Equipments

- Universal three point hitch
- Grass swath guide
- Bar safety protection
- Cardan shaft

Optional Equipments

- Hydraulic cutting bar lifting



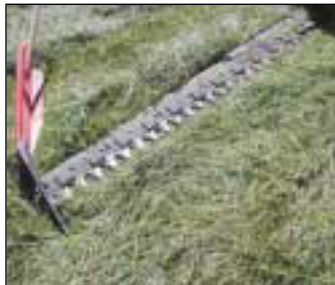
Mechanical lifting




Hydraulic lifting




Removable tooth



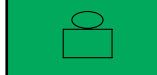
FBR






--





	kW	HP
FBR 130 *	18	25
FBR 145 *	18	25
FBR 175 *	18	25
FBR 205 *	18	25

	inch	r.p.m.	Tractor Speed miles/h	lbs
	51	540	6-8	444
	57	540	6-8	451
	69	540	6-8	492
	81	540	6-8	506

* Mechanical or hydraulic lifting

GASPARDO



MASCHIO-GASPARDO USA Inc.
120 North Scott Park Road
Eldridge, IA 52748
Ph. (563) 285 9937
Fax (563) 285 9938



MASCHIO-GASPARDO CANADA Inc.
2275, rue Power
Drummondville, QC J2C 6Z6
Ph. (819) 477 1107
Fax (819) 477 1108

**COMPANY
WITH QUALITY SYSTEM
CERTIFIED BY DNV
= ISO 9001/2000 =**

DEALER: