

# ***Hakki Pilke 1X37***

## **SPARE PARTS MANUAL FOR LOG SPLITTER**



**MAASELÄN KONE OY**

Valimotie 1, FI-85800 Haapajärvi, Finland

Tel. +358 (0)8 7727300, Fax +358 (0)8 7727320

[info@maaselankone.fi](mailto:info@maaselankone.fi)

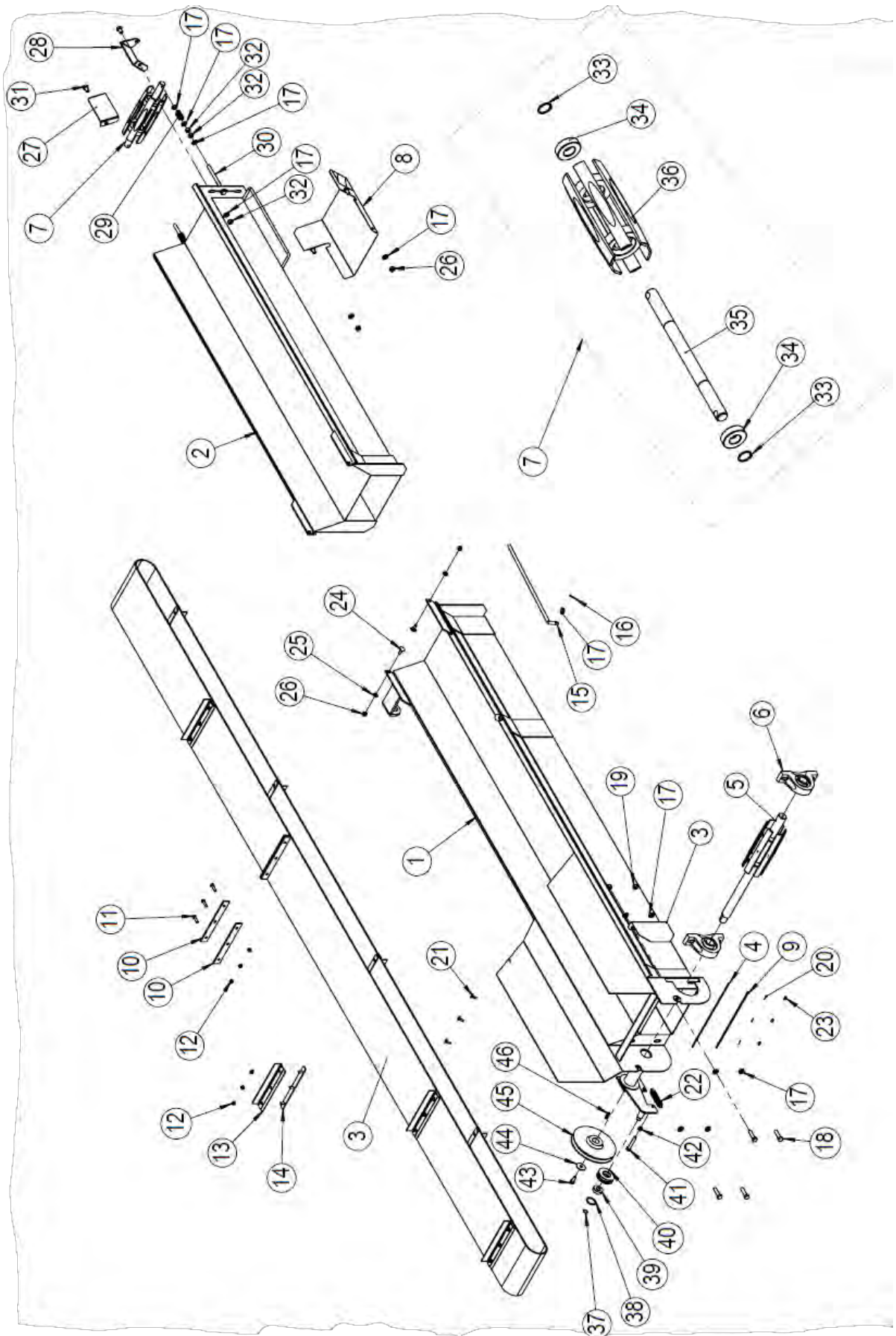
[www.maaselankone.fi](http://www.maaselankone.fi)



## Table of contents:

1.1	Exploded view of the output conveyor (10101) .....	4
1.2	Spare parts list for the output conveyor (10101) .....	5
1.3	Exploded view of the pivoting output conveyor (10830) .....	6
1.4	Spare parts list for the pivoting conveyor (10830) .....	7
1.5	Exploded view of the self-cleaning output conveyor (37400, upper section) .....	8
1.6	Spare parts list for the self-cleaning output conveyor (37400, upper section) .....	9
1.7	Exploded view of the valve mechanism .....	10
1.8	Spare parts list for the valve mechanism .....	11
1.9	Frame .....	12
1.10	Power transmission .....	13
1.11	Cutting unit .....	14
1.12	Log holder .....	15
1.13	Exploded view of the splitting unit .....	16
1.14	Log holder extension (10159) .....	17
1.15	Exploded view and installation diagram of the acceleration valve .....	18
1.16	Exploded view of the electrical unit .....	19
1.17	Spare parts list (headings 1.15–1.16) .....	20

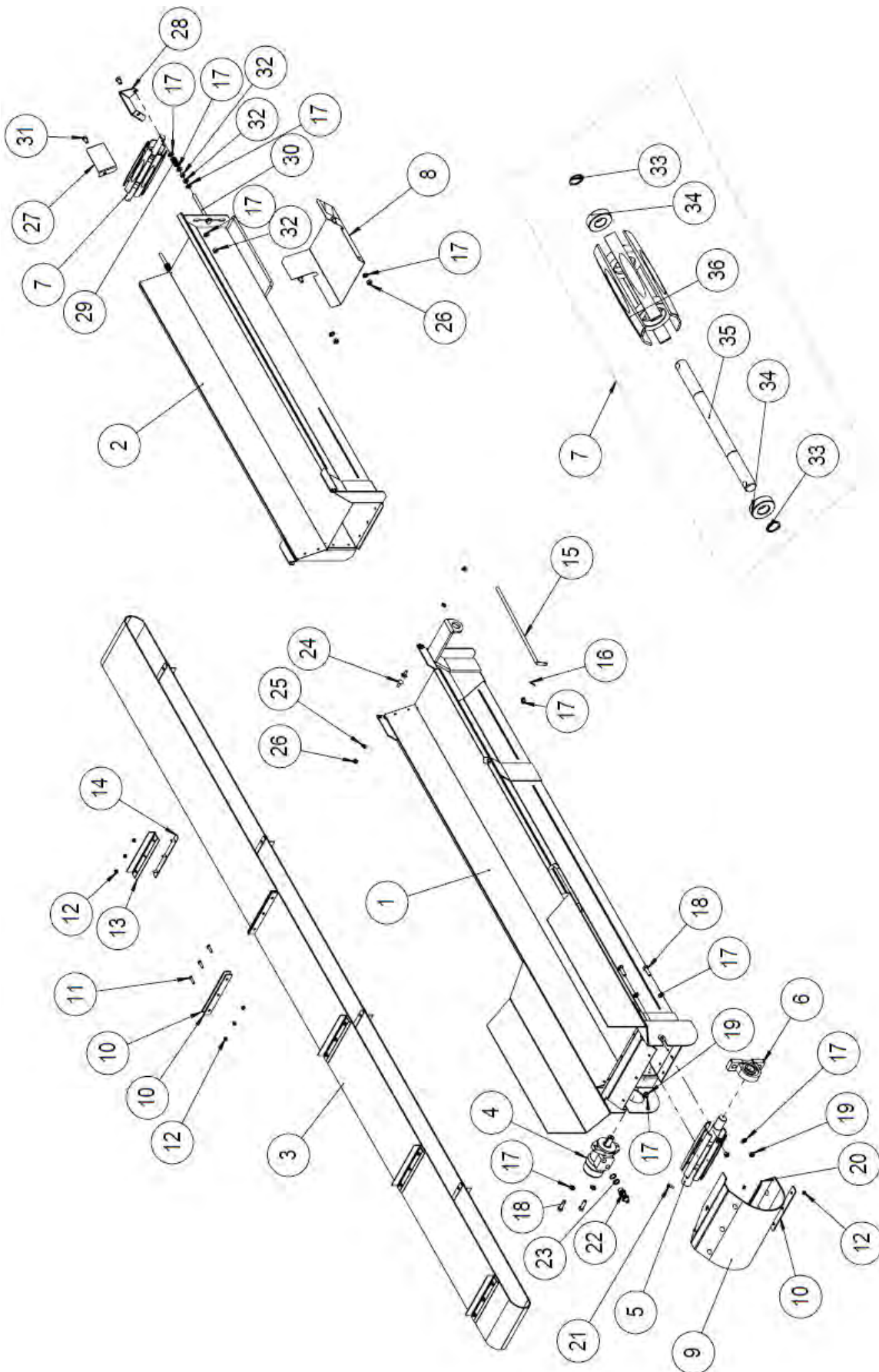
### 1.1 Exploded view of the output conveyor (10101)



## 1.2 Spare parts list for the output conveyor (10101)

No.	Part number and name	Pcs
1	10315 Lower frame of the conveyor	1
2	10316 Upper frame of the conveyor	1
3	10317 Conveyor belt, complete	1
4	95130 Rubber baffle for the conveyor	1
5	10133 Drive roller for the conveyor	1
6	95058 Bearing unit UCP 207	2
7	10132 Upper roller for the conveyor	1
8	10134 Guard for the upper end of the conveyor	1
9	10127 Fastening rod for the rubber baffle	1
10	10136 Connection rod for the belt	2
11	96131 Hex screw M8x30	3
12	96222 Locking nut M8	27
13	10135 Conveyor plate	8
14	10851 Conveyor fastening	8
15	10819 Conveyor belt holder	1
16	96246 Cotter pin 3.2x32	1
17	96058 Washer A12	21
18	96148 Hex screw M12x40	4
19	96218 Locking nut M12	6
20	96061 Washer A8	3
21	96187 Locking screw M8x20	3
22	95016 Draw spring 2x20x100	1
23	96196 Hex nut M8	3
24	96186 Locking screw M10x25	2
25	96049 Washer A10	2
26	96068 Locking nut M10	2
27	10313 Left side plate for the upper end of the conveyor	1
28	10137 Right side plate for the upper end of the conveyor	1
29	95014 Pressure spring	2
30	96143 Hex screw M12x150	2
31	96144 Hex screw M12x20	2
32	96200 Hex nut M12	6
33	96042 Retaining ring	2
34	95050 Bearing 6205	2
35	10132b Shaft for the conveyor's upper roller	1
36	10142 Upper roller for the conveyor	1
37	96039 Retaining ring 17	1
38	Retaining ring 40	1
39	95048 Bearing 6203	1
40	10149a Tensioner wheel	1
41	96101 Hex screw M10x65	1
42	96199 Hex nut M10	1
43	96139 Hex screw M10x25	1
44	10492 Washer	1
45	10099 Belt pulley A180	1
46	37075 Wedge 10x8-30	1

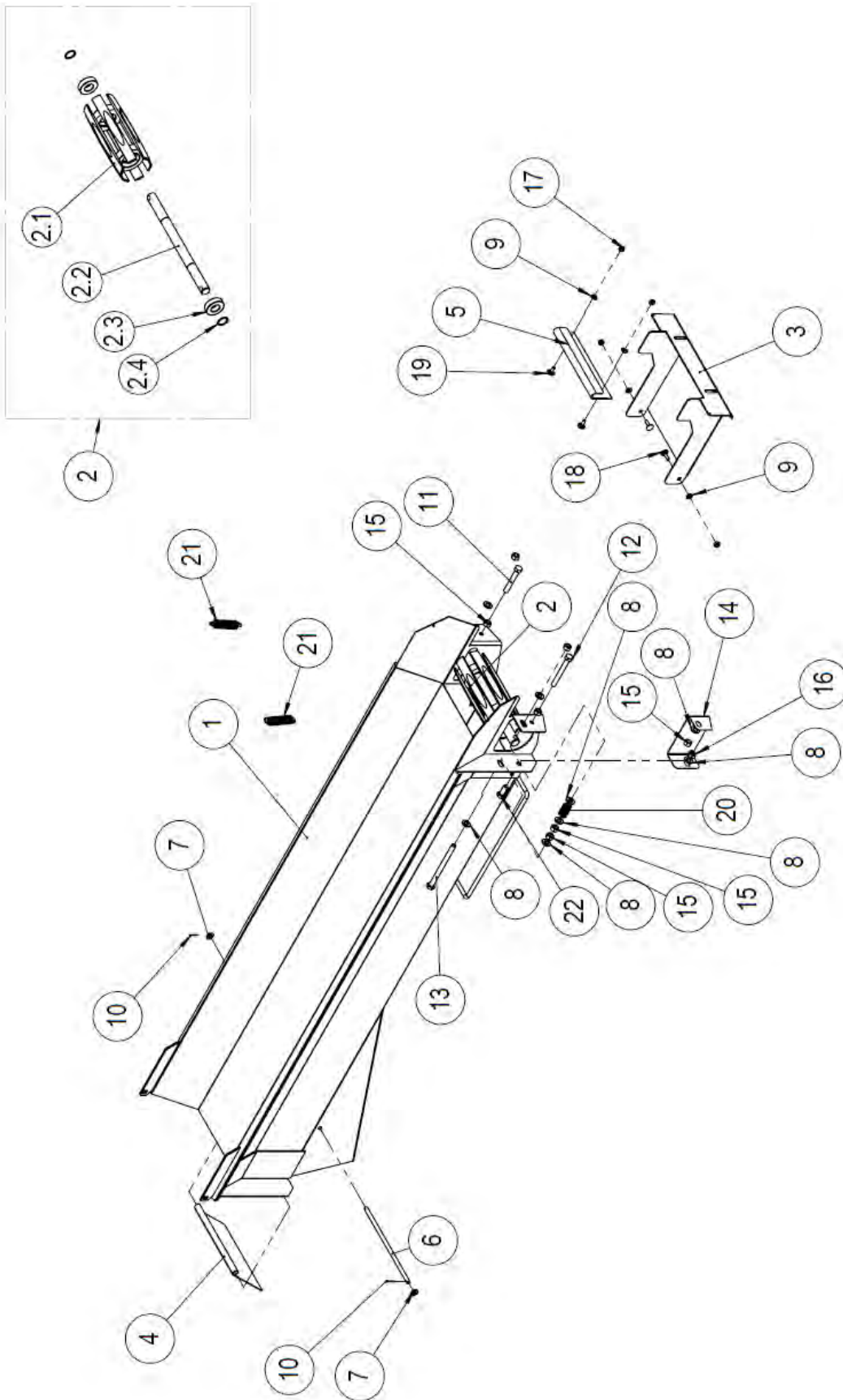
### 1.3 Exploded view of the pivoting output conveyor (10830)



#### 1.4 Spare parts list for the pivoting conveyor (10830)

No.	Number and name of item	Pcs
1	10833 Lower frame of the conveyor	1
2	10316 Upper frame of the conveyor	1
3	10317 Conveyor belt, complete	1
4	97334 Hydraulic motor OMP-50	1
5	10817 Drive roller for the output conveyor	1
6	95058 Bearing unit UCP 207	1
7	10132 Upper roller for the conveyor	1
8	10134 Guard for the upper end of the conveyor	1
9	61162 Lower protective belt for the conveyor	1
10	10136 Connection rod for the belt	3
11	96131 Hex screw M8x30	3
12	96222 Locking nut M8	36
13	10135 Conveyor plate	8
14	10851 Conveyor fastening	8
15	10819 Conveyor belt holder	1
16	96246 Cotter pin 3.2x32	1
17	96058 Washer A12	23
18	96148 Hex screw M12x40	4
19	96218 Locking nut M12	6
20	61172 Fastening rod for the conveyor's rubber baffle	2
21	96191 Locking screw M8x25	9
22	97203 Double nipple, straight	2
23	97213 USIT	2
24	96186 Locking screw M10x25	2
25	96049 Washer A10	2
26	96068 Locking nut M10	2
27	10313 Left side plate for the upper end of the conveyor	1
28	10137 Right side plate for the upper end of the conveyor	1
29	95014 Pressure spring	2
30	96143 Hex screw M12x150	2
31	96144 Hex screw M12x20	4
32	96200 Hex nut M12	6
33	96042 Retaining ring	2
34	95050 Bearing 6205	2
35	10132b Shaft for the conveyor's upper roller	1
36	10142 Upper roller for the conveyor	1

**1.5 Exploded view of the self-cleaning output conveyor (37400, upper section)**

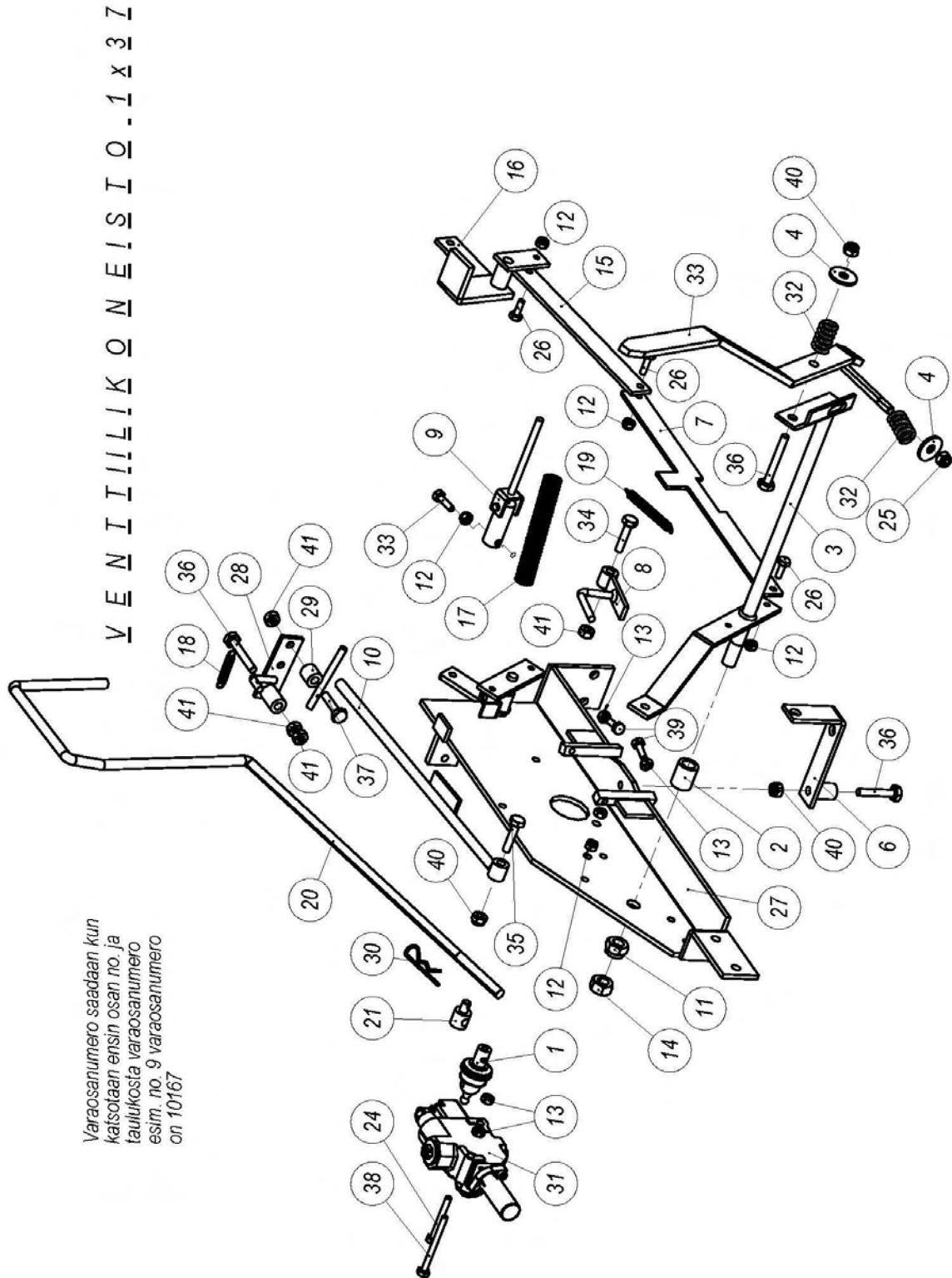




**1.6 Spare parts list for the self-cleaning output conveyor (37400, upper section)**

<b>Part</b>	<b>No.</b>	<b>Item</b>	<b>Pcs</b>
1	37416	Upper frame of the conveyor	1
2	10132	Upper roller for the conveyor	1
2.1	10142	Upper roller for the conveyor	1
2.2	10132b	Shaft for the conveyor's upper roller	1
2.3	95050	Bearing 6205 2 rs	2
2.4	96042	Retaining ring 25	2
3	37413	Debris separation plate	1
4	37414	Guard plate for the debris opening	1
5	37412	Lip plate	1
6	37411	Link rod	1
7	96049	Washer DIN 125 A10	2
8	96058	Washer DIN 125 A12	14
9	96061	Washer DIN 125 A8	4
10	96244	Cotter pin DIN 94 2.5x20	2
11	96151	Hex screw DIN 933 M12x80	1
12	96141	Hex screw DIN 933 M12x100	1
13	96269	Hex screw DIN 933 M12x170	2
14	37417	Protective plate for the roller	1
15	96200	Hex nut DIN 934 M12	11
16	96218	Locking nut DIN 985 M12	1
17	96222	Locking nut DIN 985 M8	4
18	96191	Locking screw DIN 603 M8x25	2
19	96187	Locking screw DIN 603 M8x20	2
20	95014	Pressure spring 3.5x22x38	2
21	95390	Draw spring 2x20x100	2
22	96145	Hex screw DIN 933 M12x30	1

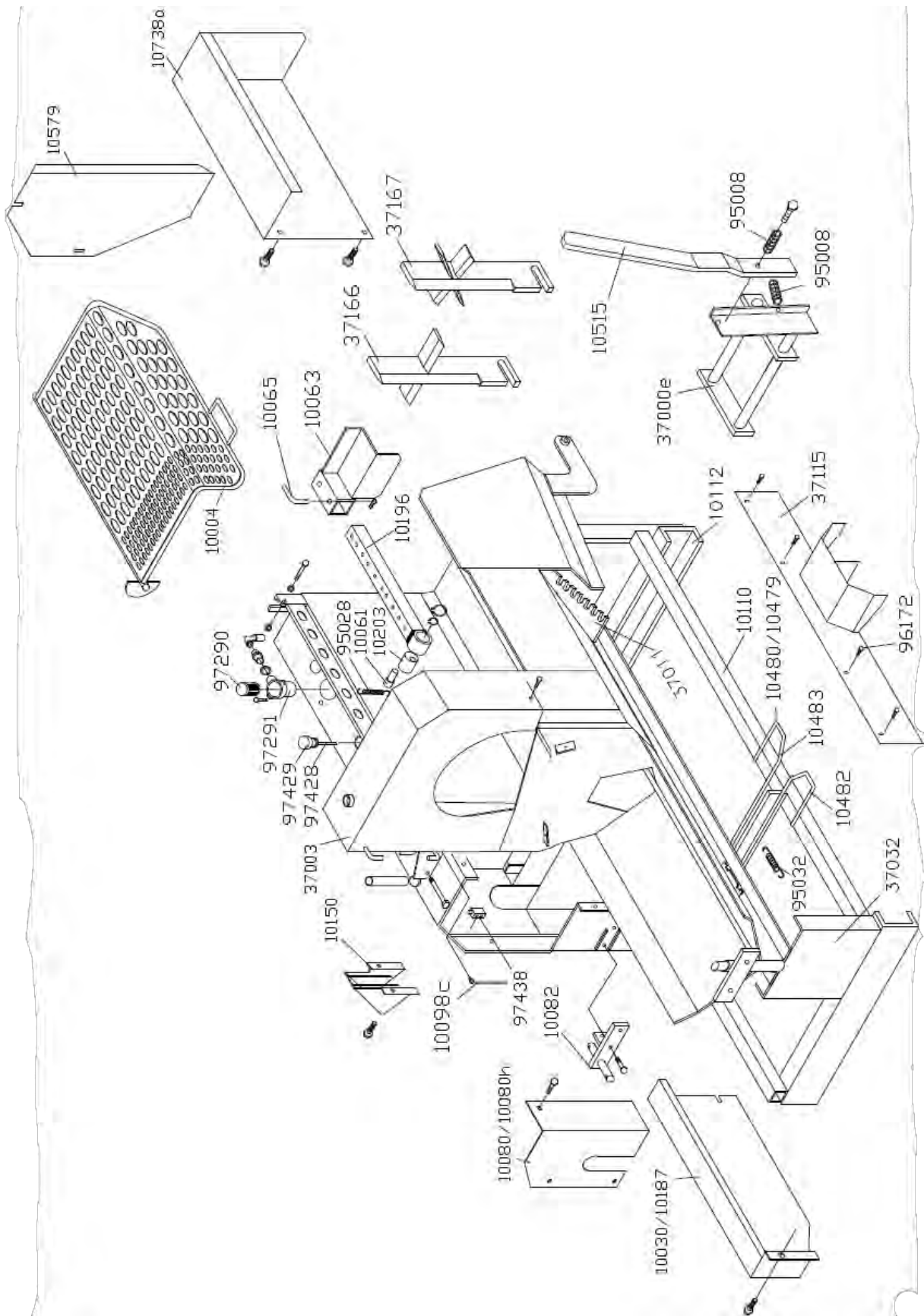
## 1.7 Exploded view of the valve mechanism



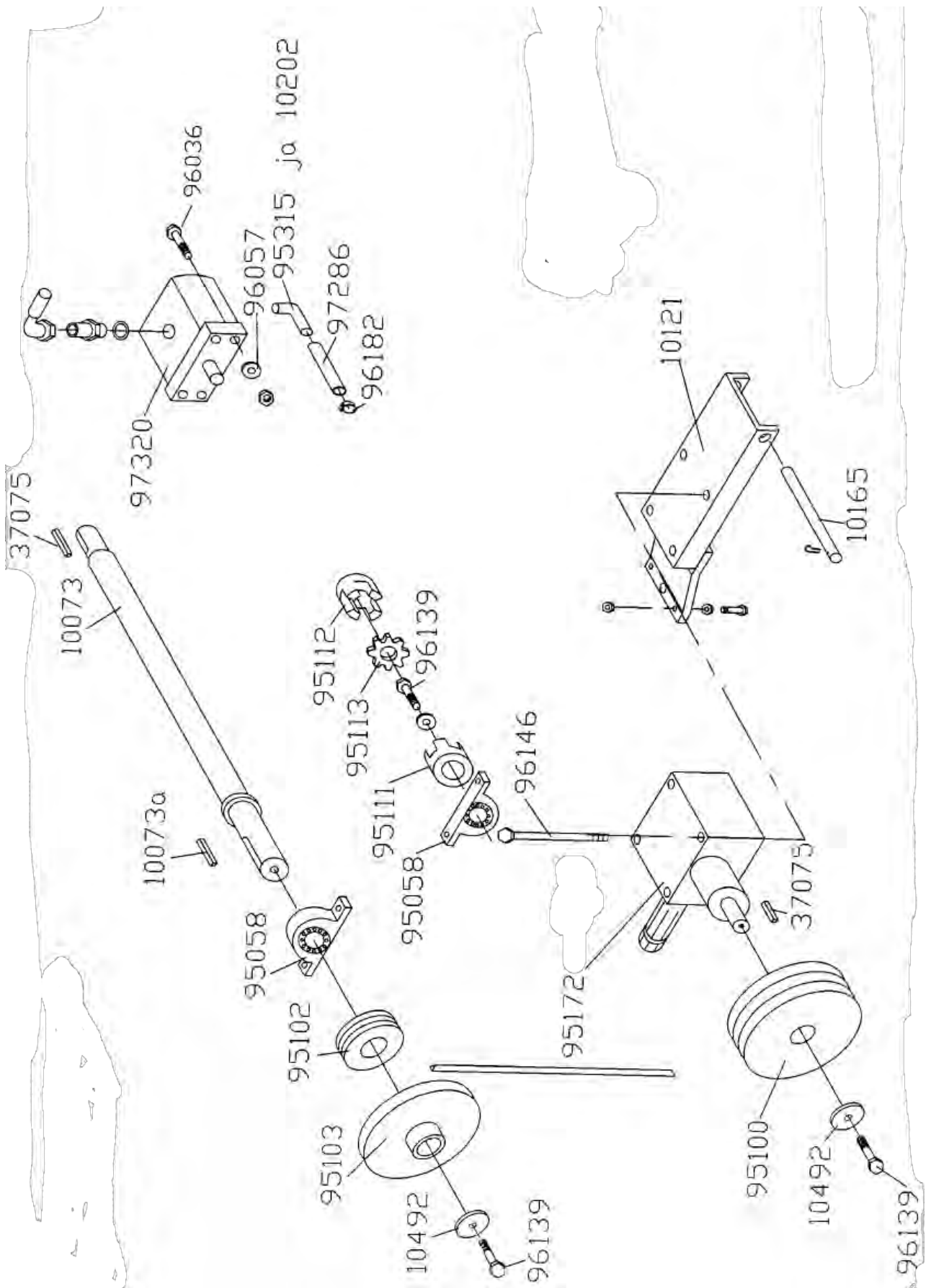
### 1.8 Spare parts list for the valve mechanism

	NO.	ITEM	pcs
1	97354	Ball joint	1
2	10386	Bushing	1
3	10385	Frame for the splitter's control lever	1
4	96064	Washer M10	2
6	10145	Flat rod for the valve	1
7	10026	Flat rod for the stopping lever	1
8	10023	Triggering lever	1
9	10167	Jointed lever	1
10	10025	Triggering lever	1
11	96213	Nyloc nut M16	1
12	96217	Nyloc nut M8	1
13	96205	Hex nut M8	4
14	96195	Hex nut M16	1
15	10017a	Flat rod for the stopping mechanism	1
16	10017c	Shaft for the stopping lever	1
17	95018	Pressure spring Ø22x2 L=140	1
18	95012	Draw spring Ø0.9xØ9.8-40	1
19	95013	Draw spring Ø0.9xØ9.8-100	1
20	37320	Safety rod	1
21	10321	Joint nipple for the safety rod	1
24	96168	Hex screw M8x60	1
25	96098	Hex screw M10x40	1
26	96163	Hex screw M8x25	2
27	10029k	Valve body	1
28	10016	Triggering lever	1
29	10015	Lifting piece for the triggering lever	1
30	96208	Needle pin	1
31	97401	SD11 valve	1
32	95008	Pressure spring 3.5x22x38	2
33	10406	Lever b	1
34	96088	Hex screw M10x40 (10.9)	1
35	96129	Hex screw M10x40 (4017)	1
36	96100	Hex screw M10x60	1
37	96098	Hex screw M10x40 (4016)	1
38	96168	Hex screw M8x80	1
39	96130	Hex screw M8x20 (10.9)	2
40	96067	Nyloc nut M10	3
41	96199	Hex nut M10	3

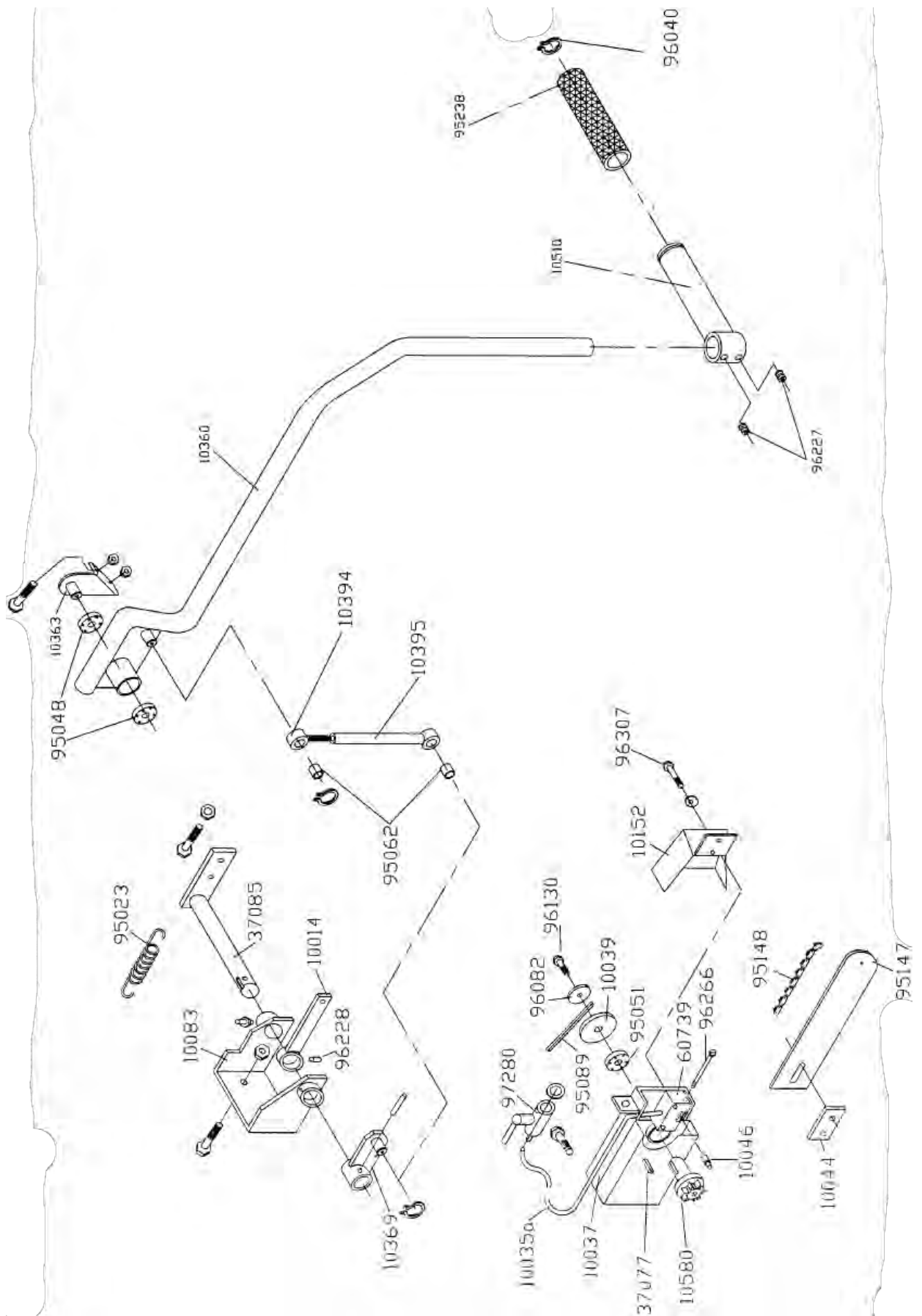
### 1.9 Frame



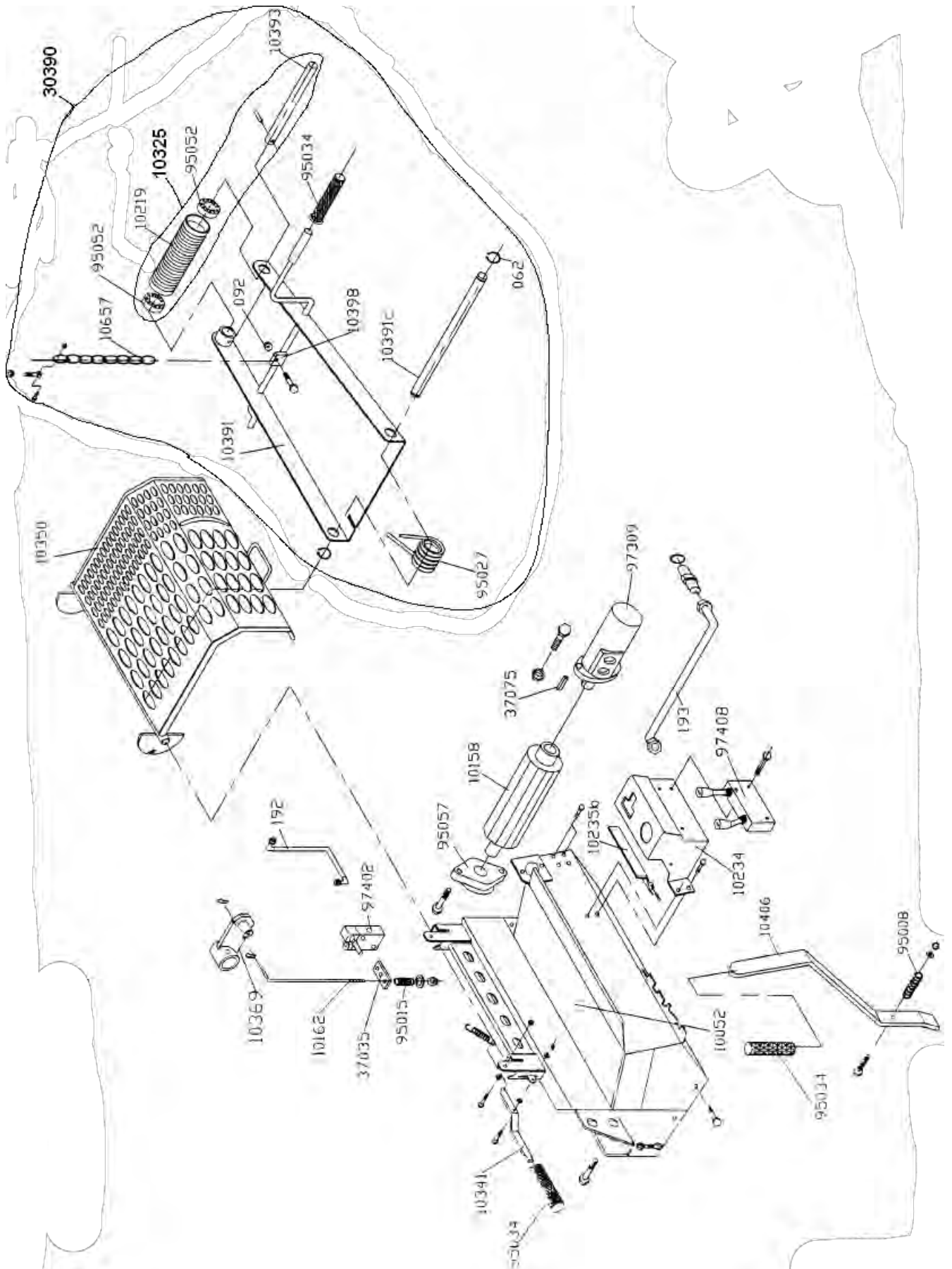
## 1.10 Power transmission



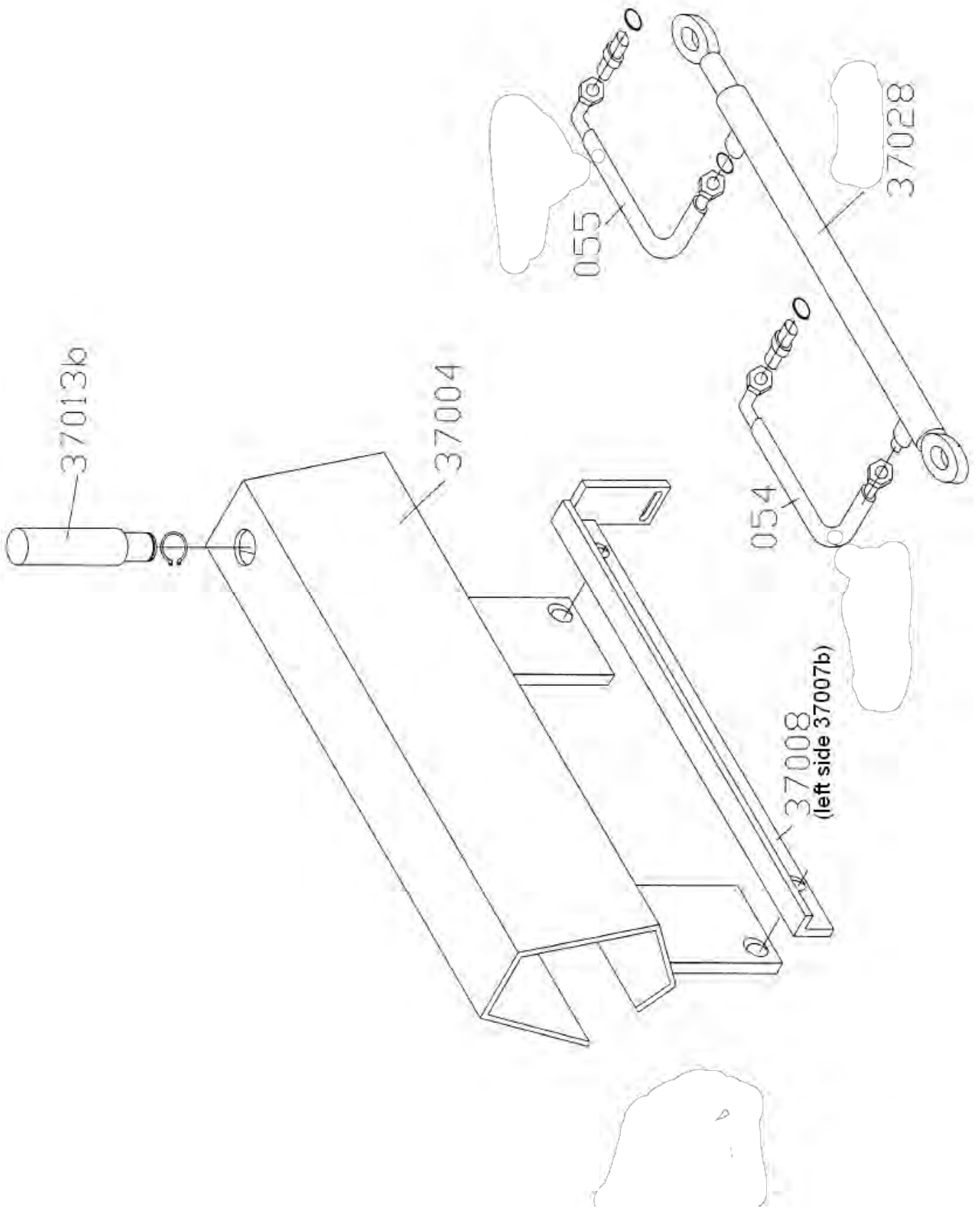
## 1.11 Cutting unit



## 1.12 Log holder

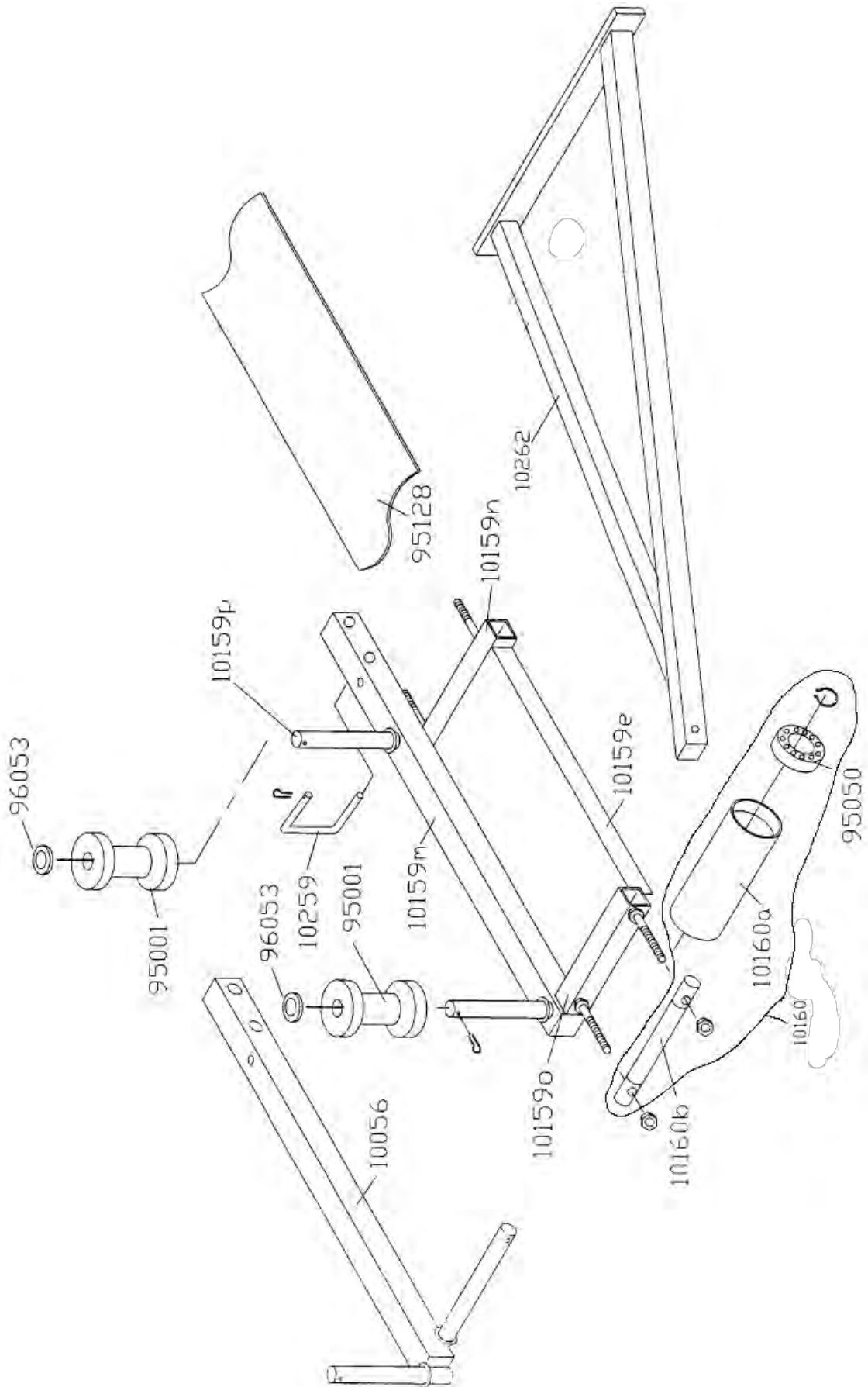


### 1.13 Exploded view of the splitting unit

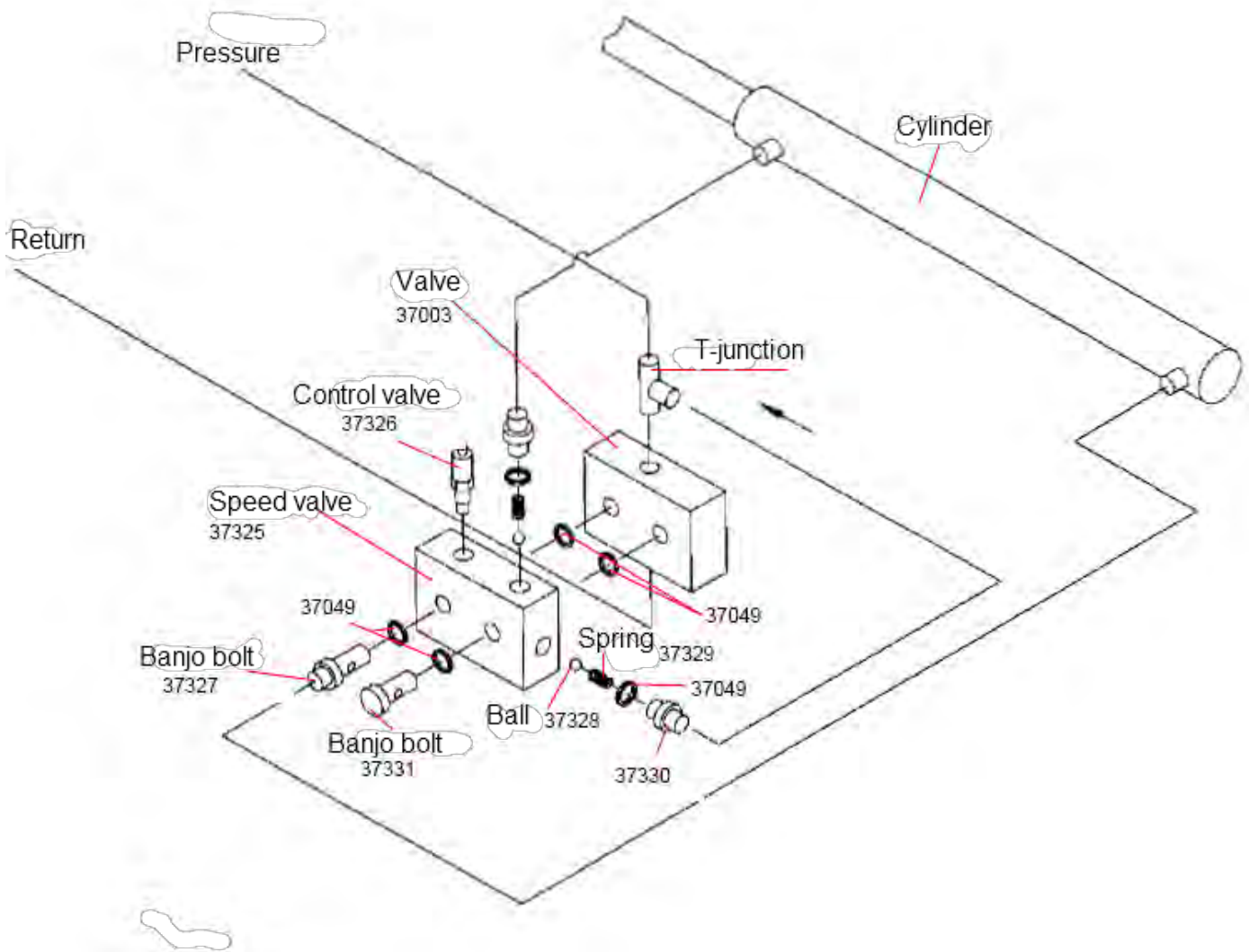




### 1.14 Log holder extension (10159)



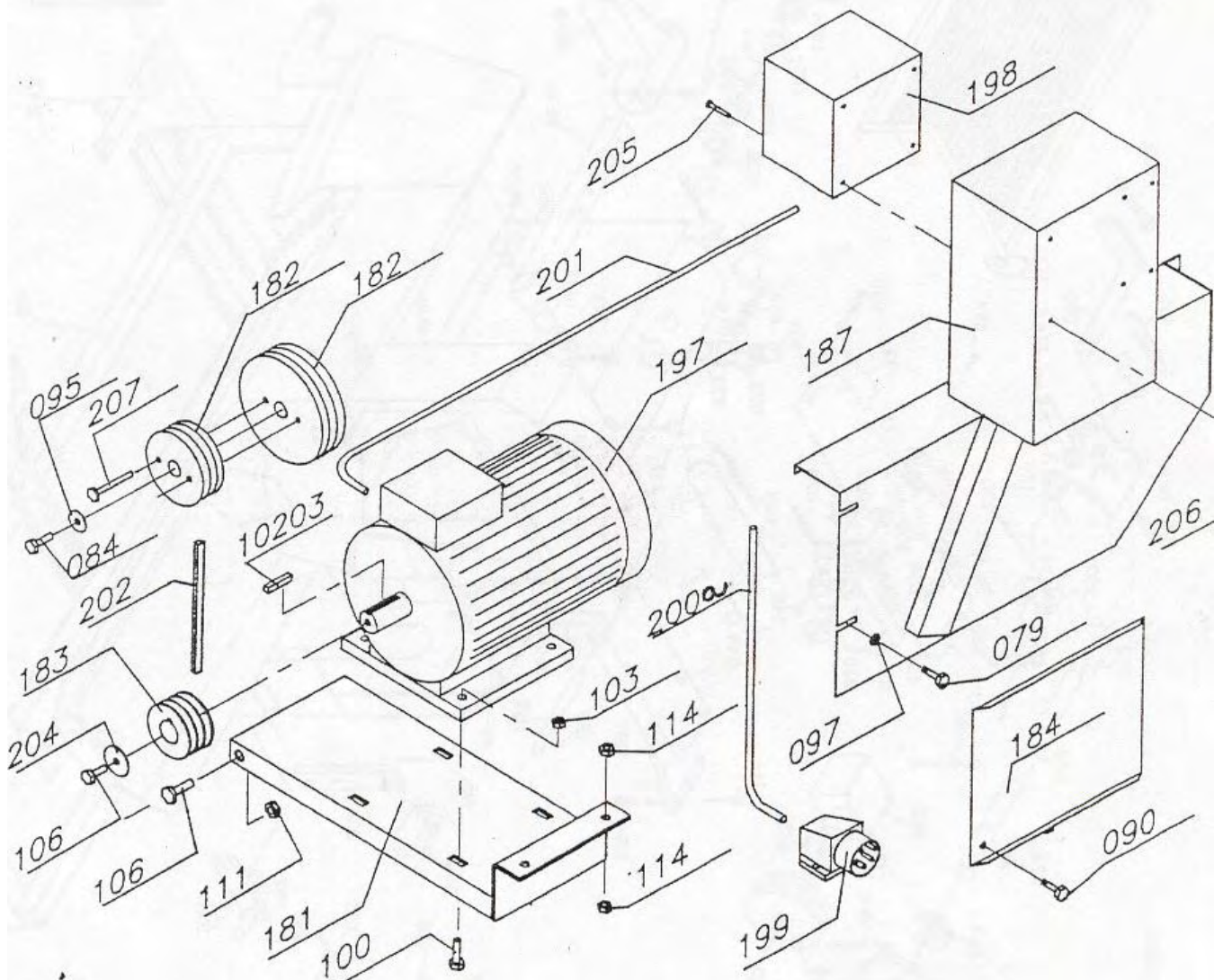
### 1.15 Exploded view and installation diagram of the acceleration valve



## 1.16 Exploded view of the electrical unit

### SÄHKÖKÄYTTÖ

Viitteestä saadaan varaosnumero  
kun alkuun lisätään 37.  
Esim. Viite 079 varaosnumero on 37079



### 1.17 Spare parts list (headings 1.15-1.16)

New number	Number	Item	Pcs
	37001	Frame	1
95171	37002	Angle transmission 1020	1
95172	37002a	Angle transmission 2021	1
97401	37003	Valve SD4/1	1
97354	37003a	Valve ball joint	1
37003	37003c	Upper container	1
10004	37004	Upper cover	1
97320	37005	Hydraulic pump 16cm	1
37004	37006a	Slide	1
95051	37009	Bearing 6205RS	2
37007	37010a	Slide fastener, left	1
37008	37010b	Slide fastener, right	1
95013	37011	Draw spring 0.9*9.8*100	1
95012	37011a	Draw spring 0.9*9.8*40	1
10013	37013	Connecting rod	1
10014	37014	Arm of the triggering lever	1
10015	37015	Lifting piece for the triggering lever	1
10018	37016	Starting lever assembly	1
10017	37017a	Intermediate flat rod	
95018	37018	Pressure spring 2*22*140	1
95055	37020	Bearing 6207RS	3
95145	37021	Blade flange 15"	1
10480	37021b	Reversing mechanism	1
95147	37021d	Blade flange 16"	1
10023	37023	Triggering lever	1
37023	37024	Intermediate flat rod	1
37026	37024d	Intermediate flat rod (electrical)	1
10025	37025	Triggering lever	1
10017	37026	Flat rod for the stopping lever	1
95146	37028	Blade chain 0.325" 64 loops	1
95148	37028a	Blade chain 0.325" 66 loops	1
10029	37029	Valve body	1
10030	37030	Valve guard	1
97290	37031	Filter cartridge CR 50	1
97291	37032	Filter FIO 50/3	1
95090	37034	V-belt A34 or XPA882	1
95089	37034a	V-belt XPA850	1
95023	37036	Draw spring 3.5*30*180	1
10038	37037	Blade actuator housing, no shaft	1
10039	37039	Belt pulley 1A180 diameter 80	1
10580	37040	Blade drive shaft	1
97274	37042	Ball valve	1
10044	37044	Fastening rod for the blade flange	1
97286	37045	Inlet hose, int. diameter 25	1

10046	37046	Tightening pin for the flange	1
95315	37047	Angle 90 3/4"	1
	37048	Log holder	1
10052	37048a	Input conveyor table	1
97213	37049	Usit seal 1/2"	6
97204	37050	Double nipple 1/2"	6
97212	37051	Usit seal 3/8"	4
97030	37053	Hose 3/4" 1.9m	1
97031	37054	Hose 3/4" 0.8m	1
97014	37055	Hose 1/2" 0.75m	1
10056	37056	Extension roller	1
97429	37057	Filler cap 1 1/2"	2
95001	37059b	Roller	1
10061	37061	Shaft for the log length limiter	1
10061a	37061a	Log length limiter	1
10203	37061f	Eccentric flange	1
96042	37062	Locking ring A25	2
96046	37062f	Locking ring A50	1
10196	37063	Pipe for the log length limiter	1
10065	37065	Locking pin	1
95103	37066	Belt pulley 1A180/35	1
95102	37067	Belt pulley 3A90/35	1
95100	37068	Belt pulley 3A180/25	1
95081	37069	V-belt A38	3
96044	37070	Locking ring A30	4
95083	37071	V-belt A94	1
95084		V-belt A96	
95058	37072	Bearing UCP 207	4
10073	37073a	Drive shaft for the pump	1
10074	37074	Wedge 7*8*75	1
37075	37075	Wedge 7*8*30	3
	37076a	Conveyor belt guard	1
10062	37077	Wedge 7*8*15	1
96160	37079	Hex screw M8*12	12
10579	37079a	Pump cover plate	1
10080	37080	Guard for the oil tank end	1
	37081	Pump fastener	1
10082	37082	Draw pin	2
10083	37083	Blade actuator plate	1
96161	37084	Hex screw M8*20	14
37085	37085	Blade drive shaft / easy	1
37086	37085a	Blade drive shaft 1x/2x	1
96307	37088	Hex screw M8*55 10.9	1
96165	37090	Hex screw M8*30	10
96126	37091	Hex screw M8*60	4
96205	37092	Hex nut M8	48
96158	37093	Hex screw M8*20	2
96057	37094	Washer M8	20
96140	37098	Hex screw M10*30	6
10098c	37098c	Support rod for the upper container	1
95110	37099	Belt pulley 1A180/28	1
96098	37100	Hex screw M10*40	4

96099	37101	Hex screw M10*50	4
96095	37102	Hex screw M10*130	4
96199	37103	Hex nut M10	16
96049	37104	Washer M10	4
95104	37105	Belt pulley (diameter 80mm)	1
96147	37106	Hex screw M12*35	8
96152	37106a	Hex screw M14*35	4
96149	37107	Hex screw M12*45	4
96110	37108	Hex screw M12*70	1
95112	37109a	Coupling, pump side	1
95111	37109b	Coupling, splitter side	1
95113	37109c	Rubber seal for the coupling	1
96212	37111	Hex nut M12 nyloc	17
96050	37112	Washer M12	4
37000e	37113a	Blade adjustment mechanism	1
96200	37114	Hex nut M12	10
96143	37115	Hex screw M12*150	2
95233	37116	Belt 240*6600 (3.2 m conveyor)	1
96187	37118	Locking screw M8*20	28
10119	37119a	Blade adjustment lever	1
96053	37120	Washer M20	4
10121	37121	Bed for the angle transmission	1
96246	37122	Split pin 3.2*32	4
96244	37123	Split pin 2.5*20	3
96228	37124	Stopper screw M8*8	3
10125	37125	Lower conveyor frame 4m.	1
10126	37126	Upper conveyor frame 4m. conv.	1
96077	37126	Elastic pin 8*40	1
96276	37127	Grease nipple M8*1	6
10127	37127b	Fastening rod for the rubber baffle	1
10126	37130a	Conveyor trough (top)	2
10125	37131a	Conveyor trough (bottom)	2
10132	37132a	Upper roller (100*240)	1
10132b	37132b	Shaft for the upper roller	1
10133	37133	Drive roller for the conveyor (diameter 100)	1
10134c	37134c	Guard for the upper end of the conveyor	1
10135	37135	Conveyor plate	7
10136	37136	Belt connection rod	2
37013	37139	Cylinder pin	1
96138	37144	Hex screw M10*20	1
10145	37145	Flat rod for the valve	1
10149a	37149a	Tensioner pulley	1
10149	37149b	Conveyor belt tensioner	1
95016	37149c	Draw spring 2x20x100	1
95048	37149d	Bearing 6203 2RS	1
10150	37150	Sawdust guide	1
10152	37152	Belt protector for the blade actuator	1
10155	37155	Operating rod for the valve	1
10158	37158	Drive roller for the input conveyor	1
10159	37159a	Log holder extension	1
10262	37159b	Log holder support	1

10259	37159c	Locking pin	1
10160b	37160	Shaft for the tensioning roller, diameter 25	1
10160	37160a	Tensioning roller	1
29046	37164	Cylinder 63/45-650	1
97296		Seal kit for the cylinder 63/45	1
29045	37164a	Cylinder 70/45-650	1
97297		Seal kit for the cylinder 70/45	1
37021		Splitting cylinder 63/45-710	
37028		Splitting cylinder 70/45-710	
10165	37165	Angle transmission shaft	1
37166	37166b	Splitting blade 2/4 (15 mm)	1
37167	37166c	Splitting blade 2/6 (15 mm)	1
10167	37167	Jointed lever	1
97440	37168a	Body of the acceleration valve	1
95015	37171	Pressure spring 2.5*20*38	1
95008	37171a	Pressure spring 3.5*22*38	2
10180	37181	Bed for the electric motor	1
95105	37182	Belt pulley 3A125/3A188	1
95101	37183	Belt pulley 3A108	1
10184	37184	Shaft guard (electrically powered)	1
96109	37189	Hex screw M12*60	1
95057	37190	Bearing UCFL205	1
97019	37192a	Hose 1/2" 0.75m	1
97020	37193	Hose 1/2" 0.8m	2
97309	37194	Hydraulic motor OMP 400	1
97402	37195	Valve SD4/1	1
95128	37196	Belt 200*4600 (2.2m)	1
95038	37197	Electric motor 7.5kW/1500	1
95152	37198	Motor starter 7.5kW	1
95163	37199	Device jack 5x32A	1
95130	37200	Rubber baffle	1
95165	37200a	Rubber cable 5x2.5x2.5m	1
95164	37201	Rubber cable 7x1.5x2m	1
95080	37203	V-belt A36	3
96294	37205	Groove screw M4X20	4
96286	37206	Hex nut M4	4
96168	37207	Hex screw M8x80	2
95202	37209	Battery	1
95069	37212	Winch	1
95068	37212a	Strap 3m and hook	1
10219	37219	Roller	1
10221	37221	Spring lug	1
10225	37225	Conveyor belt holder	1
10229	37229	Locking latch for the conveyor	1
37320	37320	Safety rod	1
37321	37321	Fastener for the locking rod	1
96130		Hex screw M8x20 10.9	2
	<b>HAKKI PILKE 1X37 EASY</b>		
97324	37005A	Dual pump 16+6	1
	370079b	Pump cover plate	1
	370080h	Guard for the oil tank end	1

10223	37223	Adjustment lever for the splitting blade	1
95017	37223a	Pressure spring D5X25X125	1
10224	37224	Cylinder lug	2
10234	37234	Mount for the 4-block valve	1
10236	37236	Cylinder mount	1
10237	37237	Cylinder mount	1
10242	37242	Cylinder D32/16-80	1
97293		Seal kit	
10243	37243	Cylinder D50/32-190	1
97294		Seal kit 50/32	
97408	37244	4-block valve	1
37085		Blade drive shaft	