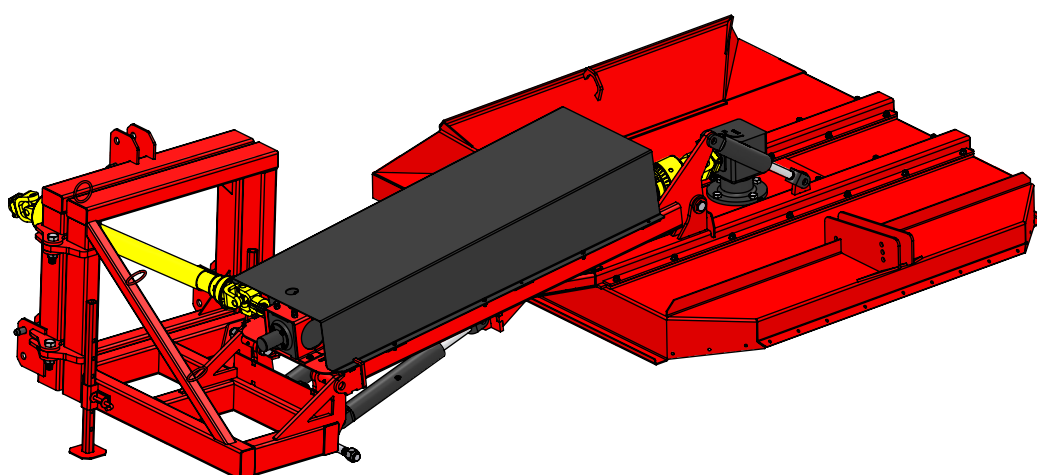
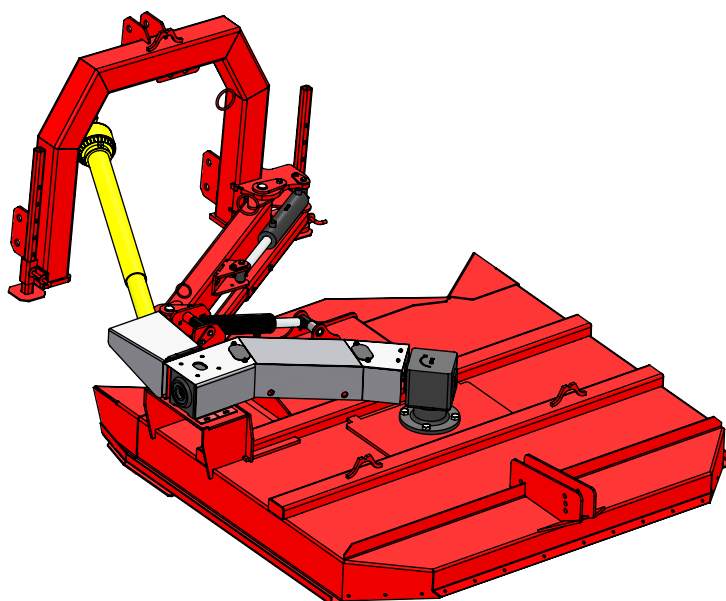


Service parts & Maintenance guide

-

Brushcutter

Standard, Telescopic & Flex series





Les Équipements Woody Inc.

Woody Equipment Inc.
Owners: Jérôme and Sébastien Labbé

205 Commercial Street
St-Odilon de Cranbourne
Beauce-Nord
Quebec, Canada
G0S 3A0

Tel: (418) 464-2748
Fax: (418) 464-2746

Email: ewoody@sogetel.net
Website: www.equipementswoody.com
Facebook: Les Équipements Woody

© All rights reserved: Les Équipements Woody Inc. from St-Odilon de Cranbourne:
No copies or reproduction of this manual, in whole or in part, shall be made without the
written permission of Les Équipements Woody Inc.



Contents

Introduction.....	1
Warranty.....	2-3
Safe Maintenance.....	4-9
Storage.....	10
5' Brush Cutter	
Parts View	
5' Mower.....	11
5' Arm.....	12
5' Front.....	13
5' Parts Table.....	14
Hydraulic Diagram	
5' Hydraulic Diagram.....	15
Telescopic 5' Brush Cutter	
Parts View	
5'T Mower.....	16
5'T Arm.....	17
5'T Front.....	18
5'T Parts Table.....	19
Hydraulic Diagram	
5'T Hydraulic Diagram.....	20
Flex 5' Brush Cutter	
Parts View	
Mower.....	21
PTO Cover.....	22
3-Point Hitch.....	22
PTO & Gearbox and Blades.....	23
Pivot Arm.....	23
Parts Table.....	24
Diagram	
6' Hydraulic Diagram.....	25



Contents

6' Brush Cutter	
Parts View	
6' Mower.....	26
6' Arm.....	27
6' Front.....	28
6' Parts Table.....	29
Hydraulic Diagram	
6' Hydraulic Diagram.....	30
Telescopic 6' Brush Cutter	
Parts View	
6'T Mower.....	31
6'T Arm.....	32
6'T Front.....	33
6'T Parts Table.....	34
Hydraulic Diagram	
6'T Hydraulic Diagram.....	35
Flex 6' Brush Cutter	
Parts View	
Mower.....	36
Blades.....	36
PTO Cover.....	37
3-Point Hitch.....	37
PTO & Gearbox.....	38
Pivot Arm.....	38
Parts Table.....	39
Diagram	
6' Hydraulic Diagram.....	40

Brushcutter parts manual

STANDARD, TELESCOPIC & FLEX SERIES



Thanks you!

We congratulate you on acquiring a Woody BrushCutter. Woody Equipment designs and manufactures equipment according to very rigorous criteria. These equipment are intended for professional use in the agricultural and forestry sectors.

Woody Equipment reserves the right to modify and/or improve equipment and maintenance instructions, as well as revise data without prior notice.

Please take note of the serial number, model, delivery date, distributor, and the seller's name. Keep this information available for ordering parts, as well as for any technical assistance or warranty inquiries.

Numéros de série _____

Modèle _____

Date de livraison _____

Le distributeur _____

Nom du vendeur _____

Limited One-Year Warranty

General Warranty

Woody Equipment Inc. (hereinafter referred to as "Woody") warrants that its products are free from defects, subject to the conditions outlined below.

All products manufactured by Woody (excluding commercial or industrial use and abuse) are covered by a one (1) year warranty applicable from the date of purchase, unless otherwise specified on the sales contract for any specific adjustments to the warranty.

The warranty is offered solely to the original purchaser of the Product and cannot be transferred to subsequent purchasers and/or retailers of the buyer unless explicitly authorized by Woody in writing. Woody warrants that mechanical, hydraulic, and electrical components will be free from defects in material and workmanship for the warranty period. The warranty covers all parts of the new product, except hydraulic hoses, hydraulic fittings, and electrical wires, and includes labor performed by Woody or an authorized Woody retailer.

Repair and Replacement Service

All repairs must be carried out by Woody or an authorized retailer with written consent from Woody, otherwise the warranty will be voided. Woody reserves the right to repair or replace, at no cost to the buyer, any parts deemed defective due to material or manufacturing defects. Woody also reserves the right to determine if improper use, lack of maintenance, or abusive use by the buyer was the cause of the defect.

In the event of a failure caused by a part covered by this warranty or by the factory assembly, the buyer must: (1) immediately notify Woody of the nature of the defect; and immediately cease the use or operation of the product, except with the written consent of Woody.

Warranty service must be performed at the point of purchase of the product, either by Woody or by a retailer using parts provided by Woody.

If the product was purchased directly from Woody, the buyer must return the product or defective parts at their own expense and without delay. If Woody determines that the parts are defective, they will repair or replace them, and if the product has been returned to Woody, they will install the parts at no cost to the buyer.

If the product was purchased from a retailer, Woody will provide replacement parts to the buyer through the retailer. The retailer will install the replacement parts and return the replaced parts to Woody at the buyer's expense within thirty (30) days of the repairs. Parts and labor will be provided at no cost to the buyer on the condition that it is proven to Woody's satisfaction that the replaced parts were defective.

In all cases, the buyer is responsible for transportation costs of parts or the product, any additional time incurred at the buyer's request, and any service and/or maintenance expenses.

All parts replaced under this warranty remain the property of Woody.

If the buyer fails to comply with the procedure described above, or if it is not proven to Woody's satisfaction that the parts are defective, the buyer will not be entitled to the warranty.

Limited One-Year Warranty

Warranty Exclusions

The retailer is not authorized to make any representations or promises on behalf of Woody, nor modify the terms and limitations of this warranty in any way.

Warranty Exclusions

This warranty does not cover the following items:

This product requires periodic parts and maintenance to function properly. This warranty does not cover repairs when normal wear has exhausted the useful life of the equipment or due to neglect in product maintenance, neglect in product storage, or failure to adhere to the usage standards prescribed by Woody.

This warranty does not cover damage to the product or machinery during installation caused by the buyer or the retailer during product installation or due to improper product installation.

This warranty does not cover parts or labor if the product is deemed to have been misused, neglected, involved in an accident, abused, modified, or any defects that may arise as a result of product modification not approved in writing by Woody.

This warranty does not cover travel time and does not cover any other transportation expenses for warranty repairs or for any expertise.

Other Exclusions

This warranty excludes:

- Visible defects including paint and decals, etc.
- Breakage resulting from machine overturn or any accidents.
- Defects due to natural disasters and other major events beyond Woody's control.
- Problems caused by parts other than those from Woody.
- Certain items are subject to warranty by their respective manufacturer.

Limitations of Implied Warranty and Indirect Damages

Woody is not responsible for any damages, including bodily injury, loss of products, rental of replacement equipment, transportation, or any other secondary or indirect claims arising from the use of this product by anyone that may occur due to a malfunction of this product.

Safety and Maintenance Guidelines

Warning. This section provides guidelines to help ensure the safety of individuals working with and around the brush cutter and outlines important safety instructions. The operator of the brush cutter and the carrier must have a good understanding of these carrier safety guidelines before using this equipment. Woody Equipment assumes no liability for any injuries or damages that may occur if these guidelines are not followed.

General Guidelines

Observe all federal safety regulations and/or other regulations applicable to hydraulic mechanisms, lifting devices, grapples, spillage, and disposal of hydraulic oil.

Ensure that the brush cutter is safely equipped in accordance with federal regulations and state or provincial regulations.

Service and Maintenance Guidelines

The installation and removal of the brush cutter, as well as all maintenance and repairs, should be carried out by qualified mechanics experienced in hydraulic devices and/or an authorized repair workshop.

Welding on the brush cutter can cause structural damage. Before welding on the brush cutter, please contact Woody Equipment or your representative for authorization. Disconnect the power cord, both battery cables, the radio, and any electrical accelerator and alternator connections. Ensure that the grounding wire does not make contact with any moving parts of the brush cutter or the carrier (gearbox, bearings, cylinder, etc.). Position the grounding wire so that the welding current does not pass through the bearings. Place the grounding wire as close as possible to the welding area.

Excessively tight or loose bolts may cause parts to detach, resulting in damage, serious injuries, or death. Properly maintain bolts and nuts by regularly inspecting and tightening them.

Electrical Guidelines

To prevent the brush cutter or the carrier from coming into contact with an electrical line, follow these guidelines:

- Before starting work with the brush cutter, inspect the work area for any electrical lines that you may need to work under or near.
- Prior to commencing work, contact the electric company responsible for the electricity in the area where you will be working and request that the power in that area be disconnected.
- Treat all electrical lines as energized and dangerous. It may not be possible to de-energize the power in the work area.
- Maintain a distance between electrical lines and all parts of the brush cutter and the carrier according to the following formula: two times the length of the insulating line plus 10 feet.
For example: if the insulating line is 6 inches long, the distance to stay away from is $2 \times 6 \text{ inches} = 12 \text{ inches}$ (1 foot), plus 10 feet, which equals 11 feet. You should stay at least 11 feet away from the electrical line.
- If the brush cutter or the carrier comes into contact with an electrical line, follow these steps:
 - Stay inside the carrier.
 - Do not allow anyone to touch the brush cutter or the carrier.
 - If you believe you can move the brush cutter or the carrier away from the line without pulling the line down, slowly and smoothly move away.
 - If you think you will pull the line down as you move away, contact the electric company to have the power to the line cut off.

Safety and Maintenance Guidelines

- If it is not possible to cut off the power or if the brush cutter or the carrier begins to burn, jump away from the carrier in the following manner:
 1. All parts of your body should leave the carrier at the same time. If one part of your body touches the ground while another part is still in contact with any part of the carrier or the brush cutter, the electricity in the line will pass through your body.
 2. Keep both arms forward and close to your body, and both legs and feet together.
 3. Jump with your body forward so that you will not fall backward or toward the carrier when you land.
 4. Once you have landed, quickly move away from the carrier at least the same distance as determined by the formula provided earlier in this document.
- Immediately notify the electric company of the situation.

Safety Instructions

Following the brush cutter's specifications, the RPM (revolutions per minute) must be respected. Working above this recommendation can cause mechanical damage to the brush cutter, personal injury, and also void the equipment warranty.

When working on the brush cutter, it is always recommended to wear protective gloves and safety glasses, especially when working with the blades and lubricants.

- !** If you have a cracked or broken blade, the blade must be replaced to prevent mechanical damage or personal injury. Ensure that all bolts are tightened properly.

Operation

All operators and maintenance personnel must read and understand this manual and all safety information before using this equipment.

The safety of all personnel within the work area depends on the proper operation and maintenance of the brush cutter. This section explains how to properly operate the brush cutter. The following procedures are covered:

- Pre-start preparation of the brush cutter.
- Starting the brush cutter.

Refer to provincial or state regulations for minimum age, training, and qualifications required to operate a brush cutter.

- !** Only use the brush cutter for the operations for which the product has been designed and use it according to the instructions provided in this manual. Woody assumes no liability for property damage, injuries, or death that may occur as a result of not following the instructions in this manual or for any operation that does not comply with provincial or state regulations for brush cutters.

Pre-Start Preparation of the Brushcutter

To ensure the safety of all personnel in the work area and to avoid damaging the carrier or the brush cutter, follow these steps before using the brush cutter.

1. Regularly inspect the brush cutter according to the Maintenance Schedule in this manual.

! Before cleaning, inspecting, or lubricating the brush cutter, stop the carrier engine and remove the key to prevent anyone from starting the engine. Allowing the carrier engine to run during these procedures can result in unexpected movement of the carrier or the brush cutter, potentially causing property damage, bodily injury, or death.

2. Repair any damage found during the pre-use inspection before operating the brush cutter.

- If the brush cutter has a hydraulic oil leak, stop the carrier. High-pressure hydraulic oil can penetrate the skin and cause severe injuries, gangrene, or death.

3. Pay attention to and note the location of all electrical lines in the area where you are working. If possible, have the power to these lines cut off (see page 24 for Electrical Safety Guidelines).

4. Keep the brush cutter close and at a horizontal level with the ground during operation.

5. To prevent slipping when climbing on or descending from the carrier, remove oil, grease, mud, snow, and other debris from the ladder or carrier floor.

6. All personnel in the area where the brush cutter is in operation must be at least 50 meters/165 feet away from the carrier and the brush cutter.

7. Only the operator should be in the carrier once the brush cutter is started. Operating the carrier or the brush cutter with people on board can result in serious injury or death.

Starting the Brush Cutter

Once the above steps, Pre-start Preparation of the Brush Cutter, have been completed, you can start the brush cutter.

Maintenance schedule

Maintenance directive

This section explains how to extend the life of your Woody brush cutter through regular maintenance. Maintenance involves regularly performing the tasks listed in the Maintenance Schedule in this manual.

- ! If you hear any unusual noise, immediately stop the carrier engine and check the gearboxes, shafts, blades, and structure for potential damage.
- ! Always stop the carrier engine when you want to clean, inspect, or work on the brush cutter. Do not install a damaged component on the brush cutter, as it can result in property damage, injuries, or death.
- ! Before cleaning, inspecting, or lubricating the brush cutter, stop the carrier engine and remove the key to prevent anyone from starting the engine. Allowing the carrier engine to run during these procedures can result in unexpected movement of the carrier or the brush cutter, potentially causing property damage, injuries, or death.
- ! Making unauthorized modifications to the brush cutter will void the warranty. Modifications can compromise the safety and operation of the brush cutter.

Preparation for Maintenance

To keep your brush cutter in optimal working condition and help ensure the safety of personnel, follow the Maintenance Schedule provided in this section.

If your brush cutter is used in extreme temperatures (below 0°F/-20°C or above 100°F/40°C), in harsh conditions, or operates for more than 50 hours per week, inspect and lubricate the brush cutter at shorter intervals than those specified in the Maintenance Schedule.

The hydraulic schematic identifies the check valve on the pressure line. Always close the valve before each inspection.

Thoroughly clean the brush cutter before each inspection using the following methods:

- Pressure washing.
- Remove any remaining dirt, ice, snow, excess oil, and grease that may conceal cracks, leaks, loose bolts, or other issues.

Maintenance schedule

The following table demonstrates the maintenance schedule that will keep your Woody brush cutter in optimal working condition and ensure personnel safety.

Item	Maintenance Schedule
Check the oil level of the gearboxes.	Weekly or 50 hours
Visually inspect the driveshafts for cracks or damage, and replace them if necessary.	Weekly or 50 hours
Visually inspect the guards to ensure they are intact, and replace them if necessary.	Weekly or 50 hours
Clean the drive couplings and lubricate them with fresh grease.	Weekly or 50 hours
Grease fittings, 10cc per fitting.	Weekly or 10 hours
Visually inspect the blades for cracks or breaks, replace if necessary, and torque the bolts to 350 lbs-ft.	Weekly or 50 hours
Check the hoses for cracks or leaks and replace them if necessary.	Weekly or 50 hours
Inspect the cylinders for cracks and repair or replace them if necessary.	Weekly or 50 hours
Check the cylinders for leaks and replace the seals if necessary.	Weekly or 50 hours
Check the hydraulic fittings for leaks, cracks, or damage, and replace them if necessary.	Weekly or 10 hours

Maintenance schedule

Lubrication of the brushcutter

Lubricate the brushcutter after it has been working for several hours, as the new grease penetrates more easily when the old grease is warm. After lubrication, wipe off any excess grease from all surfaces of the brushcutter.

Material needed

- Use EP2 grease or equivalent to lubricate your brushcutter. This grease can be used in summer conditions.
- Use EP1 grease or equivalent to lubricate your brushcutter. This grease can be used in winter conditions.
- The grease should have excellent water resistance, rust protection capabilities, good adhesive properties, and mechanical stability.
- A grease gun set to dispense 2 ml/0.12 cubic inches of grease per stroke should be used. If using an automatic greaser, ensure that it is dispensing the correct amount.

! Shut off all power sources from the carrier to ensure safe working conditions.

Storage

This section explains how to store your brushcutter. Proper storage ensures the safety of personnel and extends the lifespan of the brushcutter.

Before storage

Before storing your brushcutter, do the following:

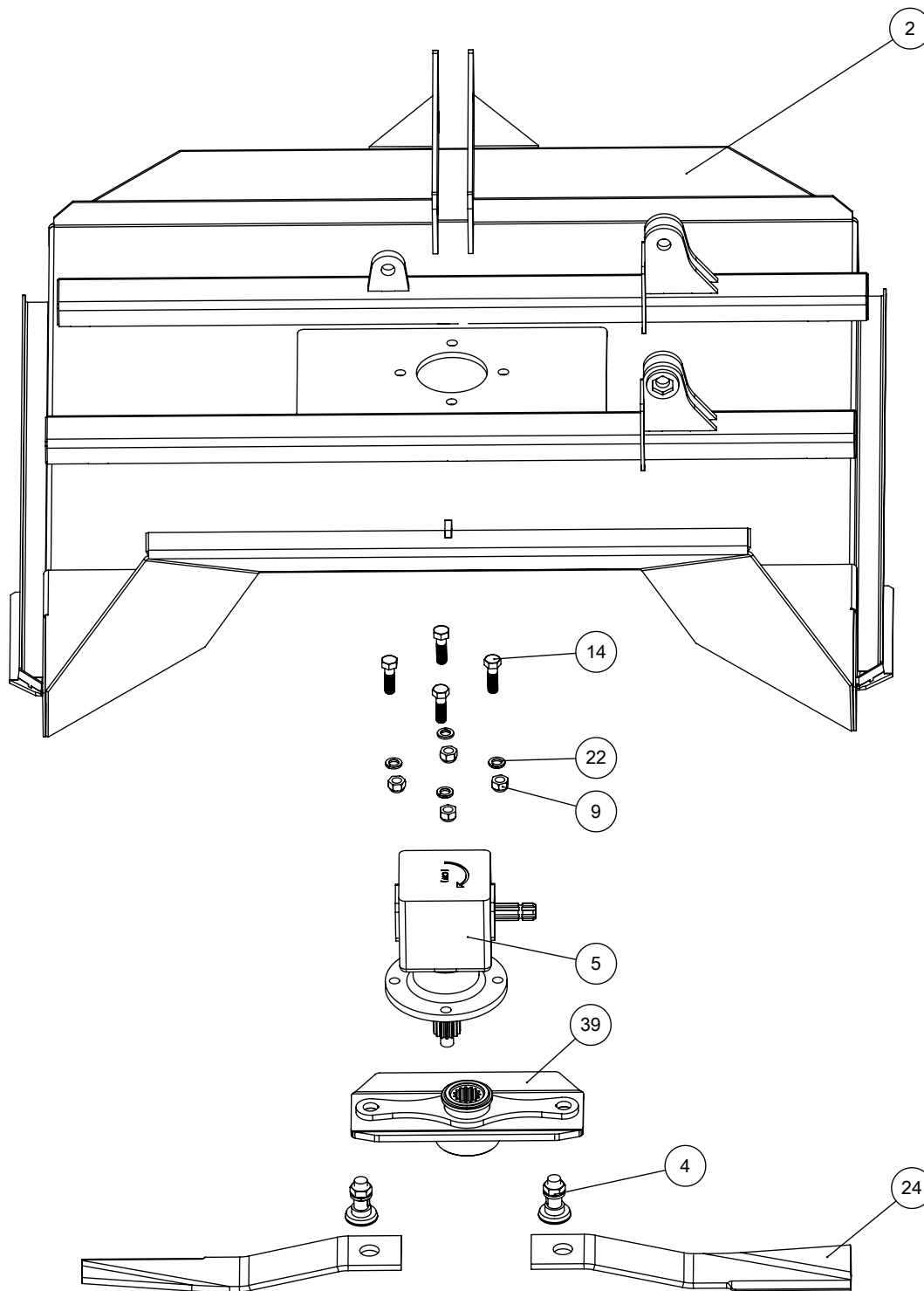
- Remove any dirt, oil, and grease residue with a cloth and cleaning solution. These debris can hide cracks, leaks, loose bolts, and other issues.
- Inspect the brushcutter for cracks, worn or missing parts, vandalism, leaks, or other damages. Follow the Daily Inspection schedule in the Maintenance Program section of this manual.
- Repair any damages found during the inspection before storing your brushcutter.
- Lubricate the brushcutter according to its next scheduled lubrication as determined in the Maintenance Program schedule (see the Maintenance Program section in this manual).
- Store the brushcutter flat on a stable surface in a dry location, avoiding storage on grass or wet surfaces.

After storage

Before using your brushcutter after storage, follow the procedures below:

- Remove any dirt, oil, and grease residue with a cloth and cleaning solution. These debris can hide cracks, leaks, loose bolts, and other issues.
- Inspect the brushcutter for cracks, wear, loose or missing parts, vandalism, leaks, or other damages. Follow the Daily Inspection schedule in the Maintenance Program section of this manual.
- Repair any damages found during the inspection before operating your brushcutter.
- If the brushcutter has been stored for 3 months or more, inspect the brushcutter and lubricate it according to the Daily and Weekly Lubrication schedule in the Maintenance Program (see the Maintenance Program section in this manual).

Brushcutter 5' #52-007

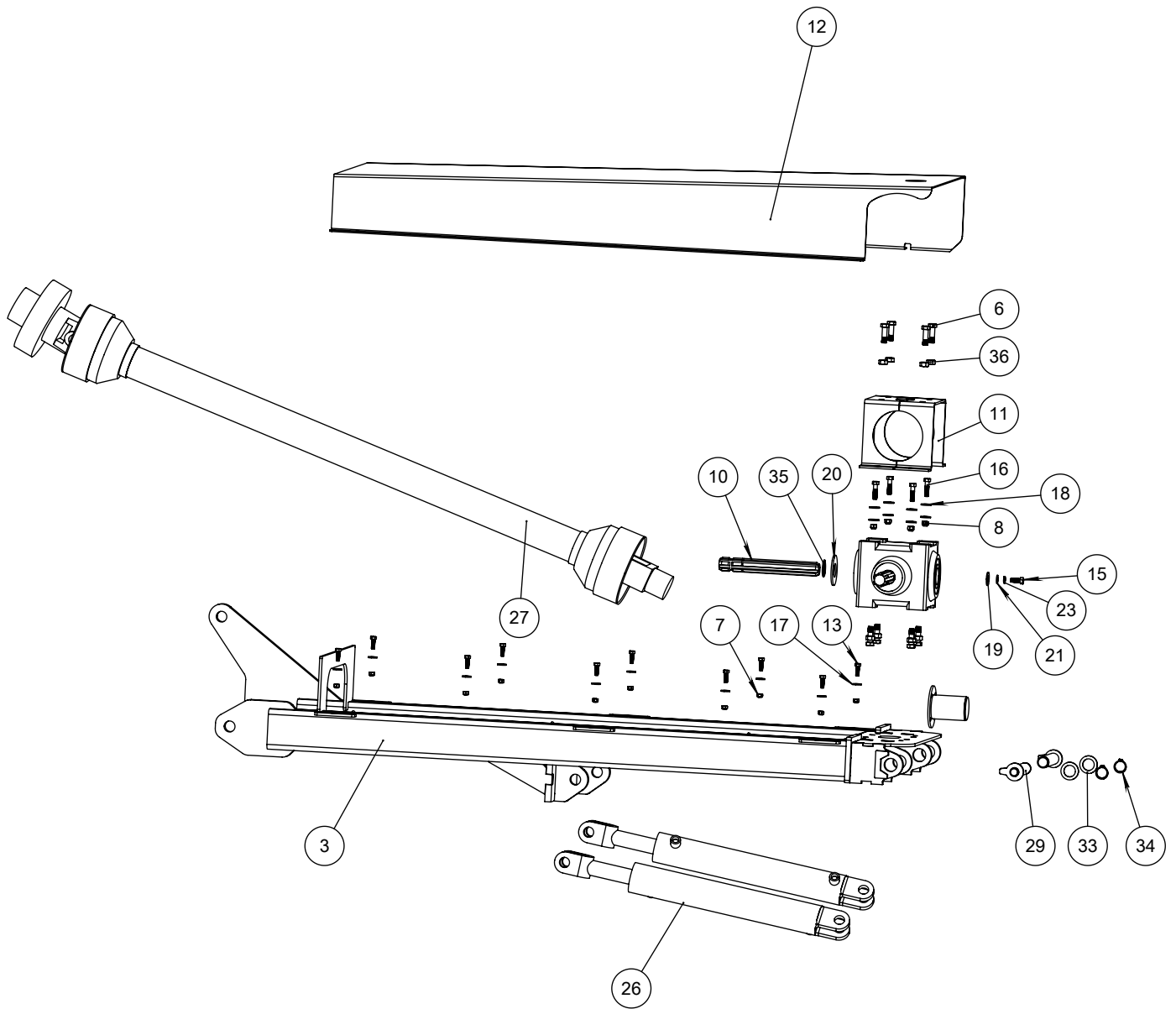


Brushcutter parts manual

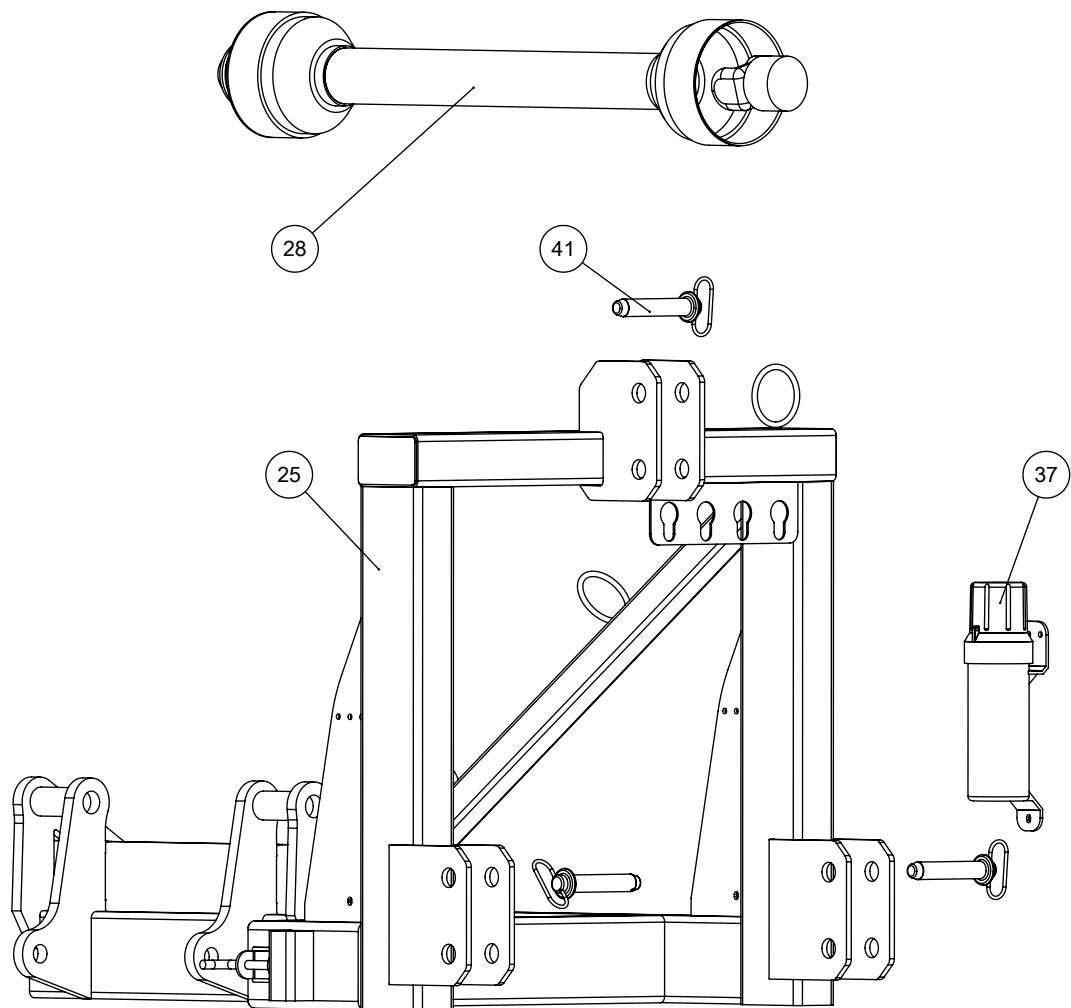
STANDARD, TELESCOPIC & FLEX SERIES



Brushcutter 5' #52-007



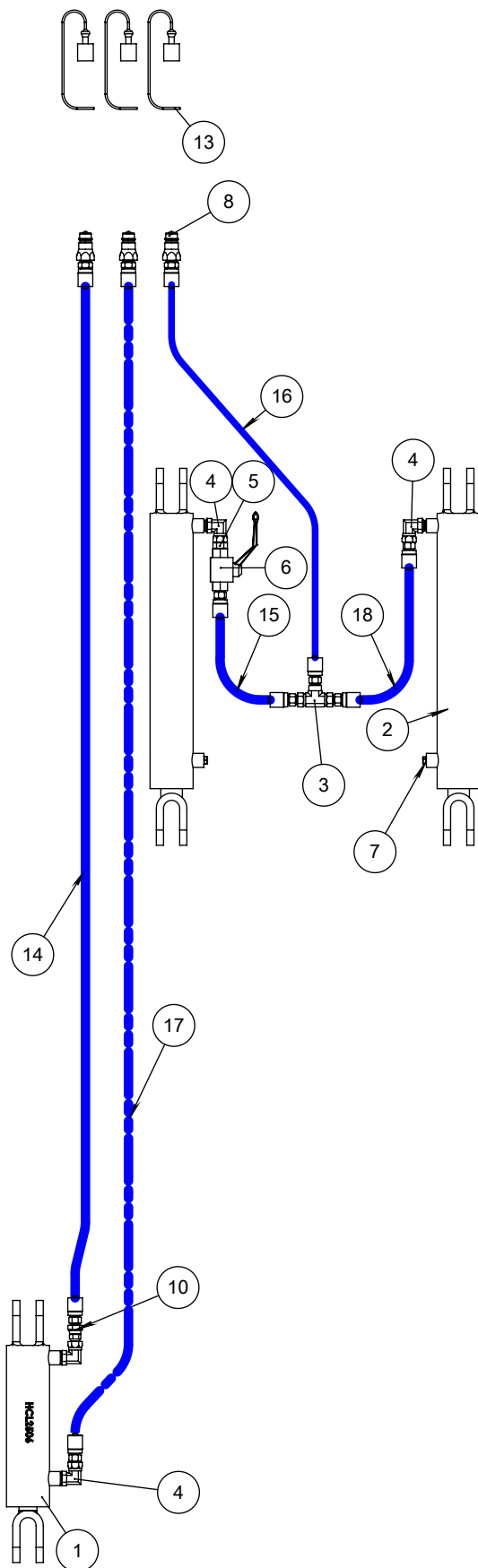
Brushcutter 5' #52-007



Brushcutter 5' #52-007

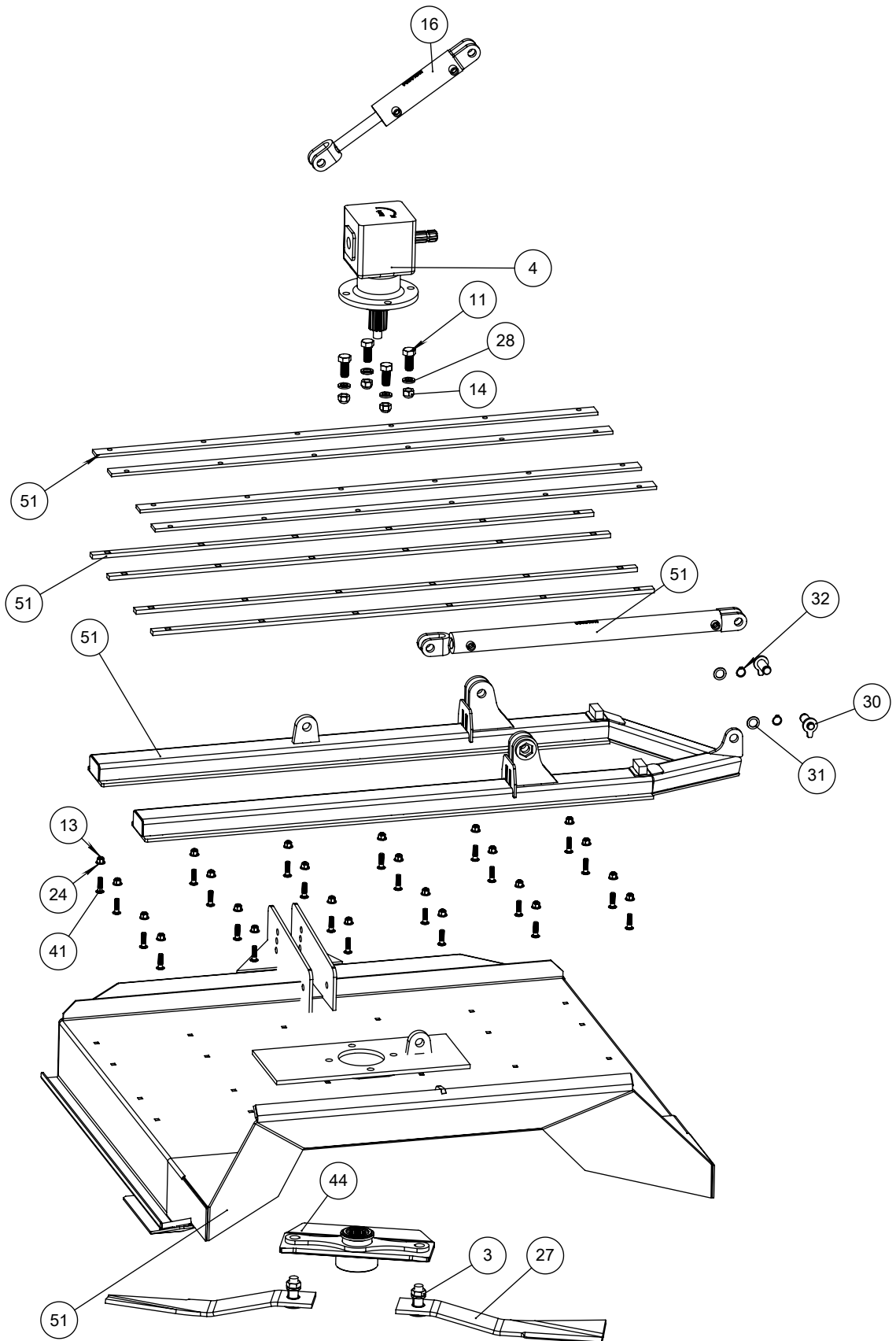
No.	# de pièce	Description_En	Qté
1	52-001-03	Foot support	2
2	52-007-12	Brushcutter head	1
3	52-007-13	Brushcutter pivot 5'	1
4	305000	Screw Kit (2x)	1
5	107010	Gearbox LF140A	1
6	301200	Bolt M12-1,75 x 40 mm Lenght	8
7	301560	Lock Nut 5/16"-18	10
8	301550	Lock Nut 3/8"-16	4
9	301540	Lock Nut 3/4"-10	4
10	305011	Spline shaft (gearbox)	1
11	52-008-042	PTO Cover	1
12	52-007-043	Protector	1
13	300700	Bolt 5/16"-18 x 1" Lenght x 1" Thread	10
14	300410	Bolt 3/4"-10 x 2 1/2" Long x 1 3/4" Thread	4
15	300500	Bolt 3/8"-16 x 1" Lenght x 1" Thread	1
16	300520	Bolt 3/8"-16 x 1 1/2" Lenght x 1" Thread	4
17	301390	Flat Washer 5/16" Broad	10
18	301350	Flat Washer 3/8" Broad	8
19	301360	Flat Washer 5/8" Narrow	1
20	301330	Flat Washer 1 1/4" Narrow	1
21	301350	Flat Washer 3/8" Narrow	1
22	301720	Flat Washer 3/4"	4
23	301730	Flat Washer 3/8"	1
24	305010	Blade 25"	2
25	52-007-14	3 Pts Assembly	1
26	120311	HCL Cylinder 2514	2
27	107040	PTO Transmission 1 3/8 x 6 (A-CS64416)	1
28	107030	PTO Transmission (A-CS53811)	1
29	52-008-19	Pivot pin	2
30	52-008-20	Cylinder pin	2
31	60-035-022	Washer	2
32	307060	Snap-ring 1"	2
33	52-007-066	Washer	2
34	307062	Snap-ring 1 1/8"	2
35	307070	Snap-ring 1 1/8" heavy	1
36	301900	Hexagonal Nut M12	8
37	400500	Documents holder tube	1
38	102820	1/2 NPT plug	2
39	52-007-20	Blade assembly support	1
40	52-008-25	Gearbox Cap	1
41	310830	Quick attach DA5050-21	3
45	120271	HCL 2506 Cylinder	1
46	107000	T27D Gearbox	1

Brushcutter 5' #52-007

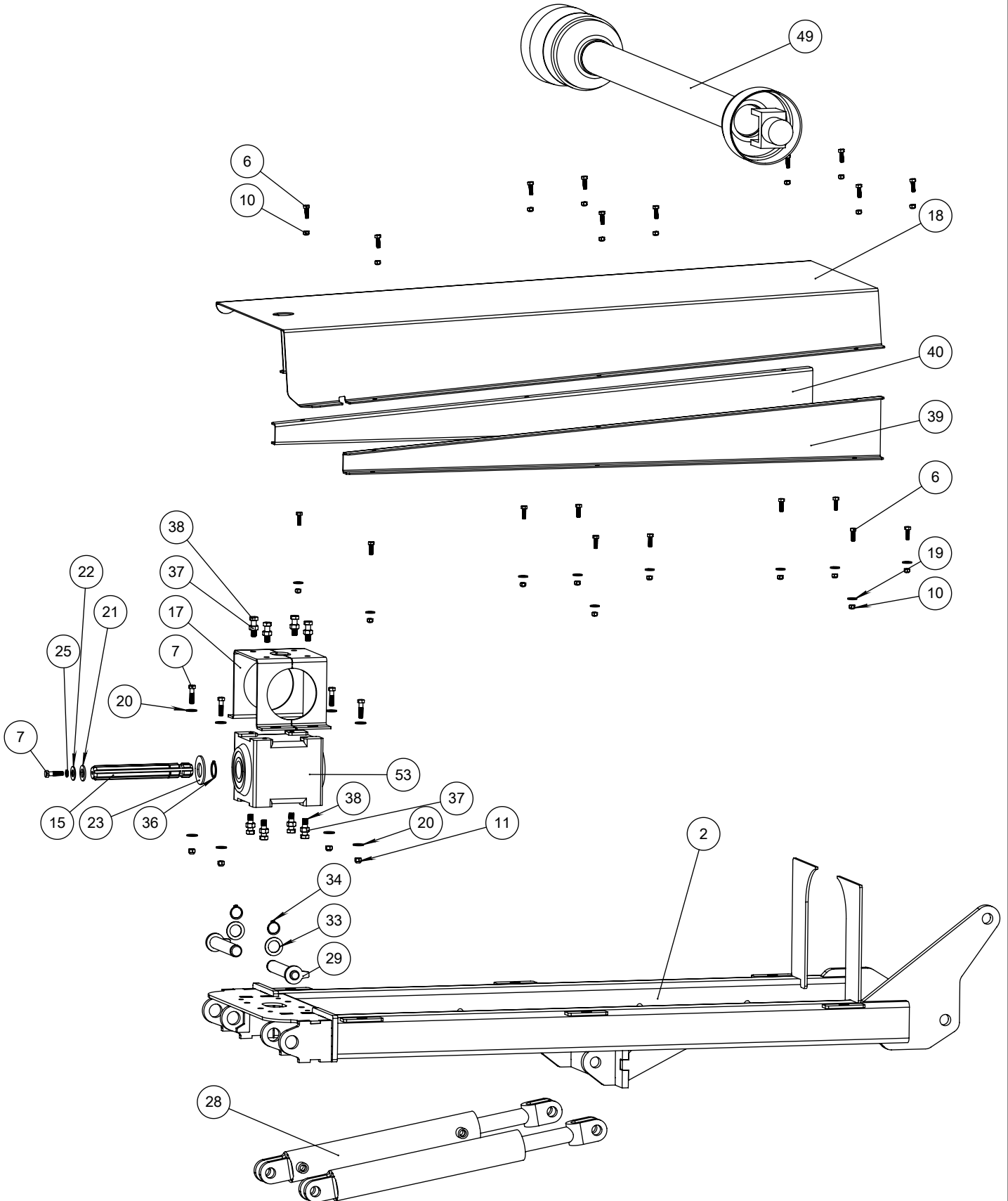


N o.	# de pièce	Nom	Qté
1	120271	Cylindre Hydraulique 2 1/2 Diam. x 6" course	1
2	120311	Cylindre HCL 2514	2
3	103700	T femelle npsm swivel-T femelle npsm swivel- femelle npt	1
4	101420	Coude 90° - Mâle ORB Ajustable 1/2" - Femelle NPSM Swivel 3/8"	4
5	103420	Mâle 3/8" - NPT x Mâle 3/8" - NPT	1
6	105020	Ball valve 3/8 NPT 7350PSI	1
7	102820	Bouchon 1/2 NPT	2
8	109010	Quick Coupling Mâle x FEM 1/2"-NPT	3
10	103230	Adapteur NPTFS 3/8"- NPTM 3/8" restricteur 1/16" diam.	1
13	140000	Dust caps 1/2" Rouge	3
14	140030-184-101750- 101750	Hose 3/8	1
15	140030-007-101750- 101750	Hose 3/8	1
16	140030-126-101750- 101750	Hose 3/8 x 80"	1
17	140030-190-101750- 101750	Hose 3/8	1
18	140030-010-101750- 101750	Hose 3/8	1

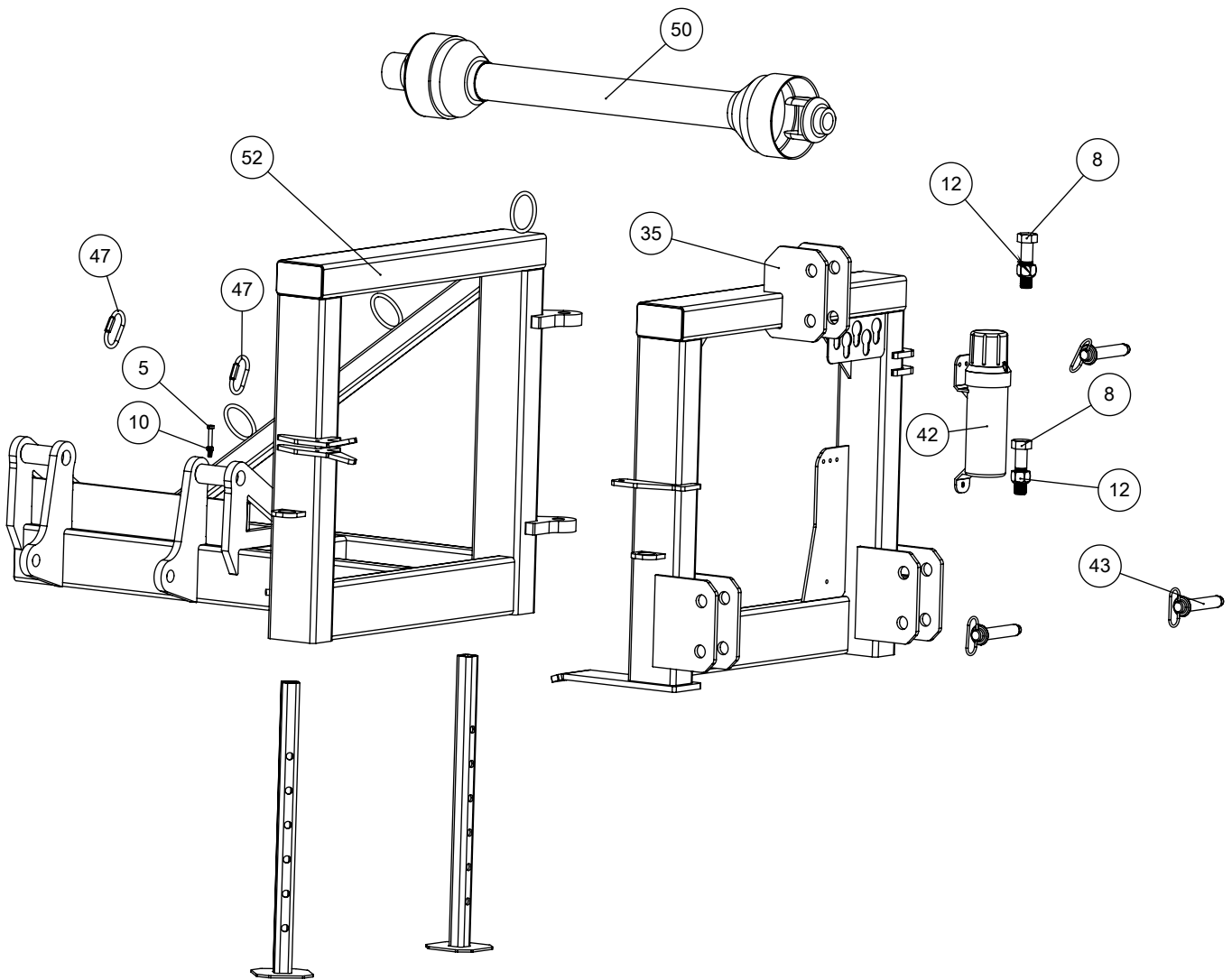
Brushcutter Telescopic 5' #52-018



Brushcutter Telescopic 5' #52-018



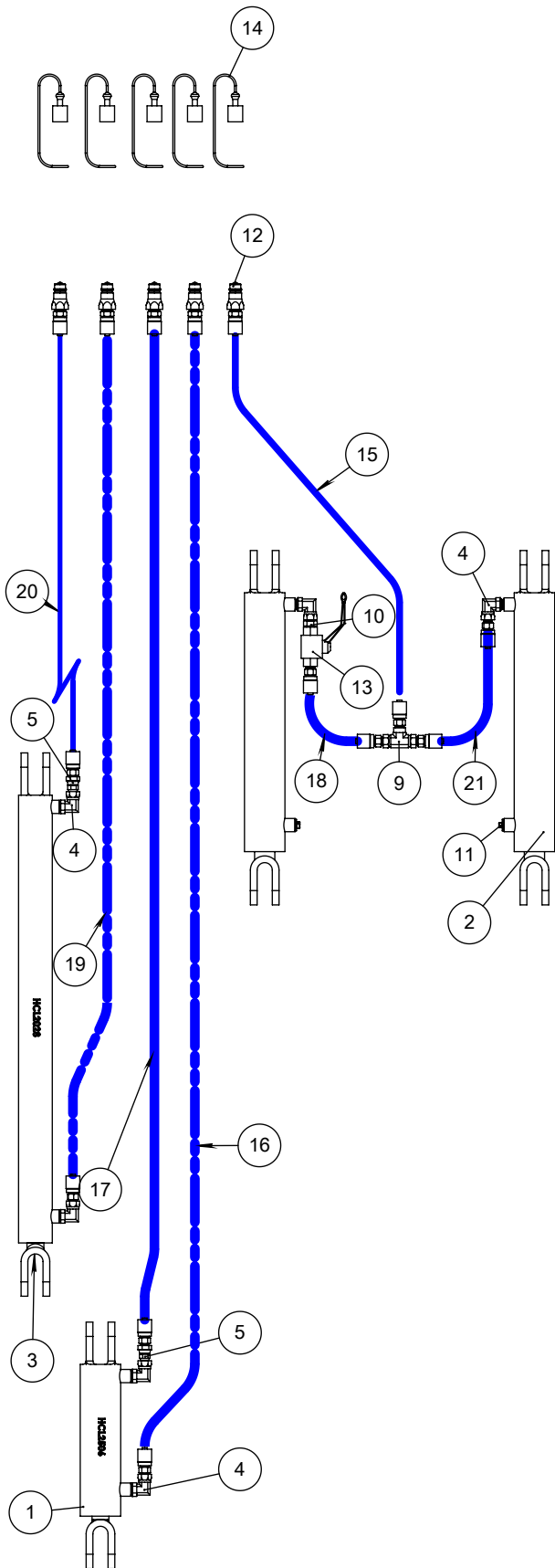
Brushcutter Telescopic 5' #52-018



Brushcutter Telescopic 5' #52-018

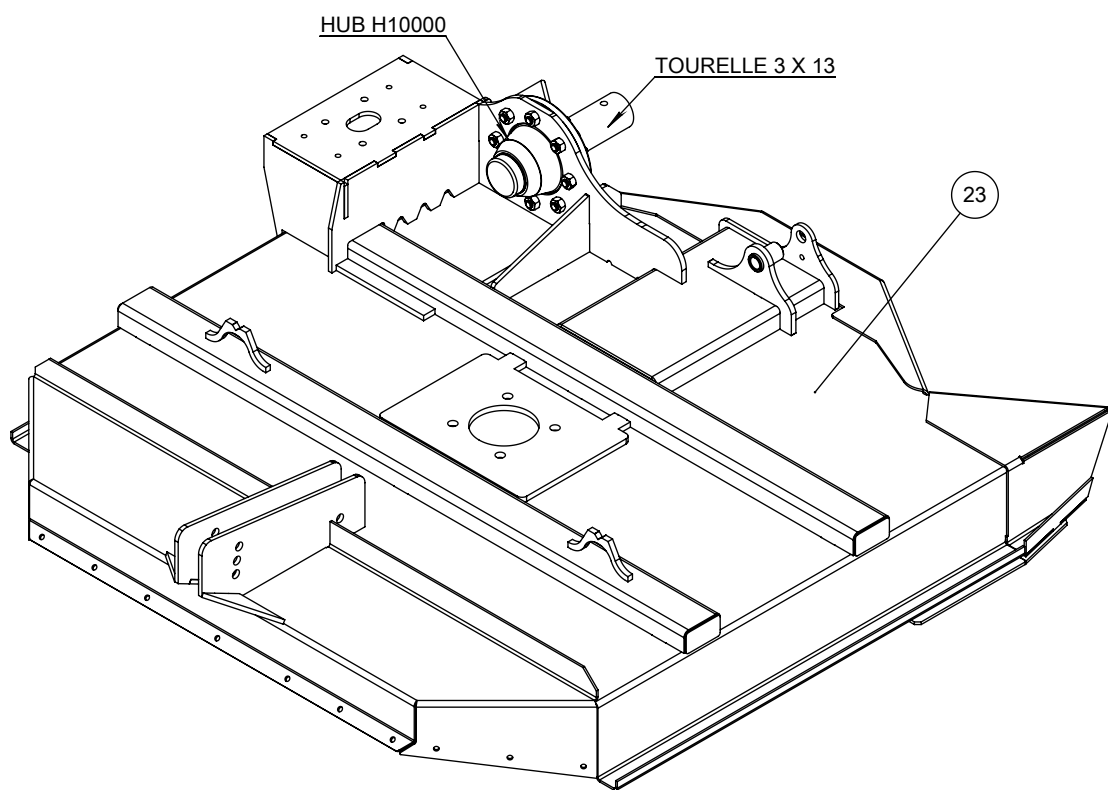
No.	# de pièce	Description_En	Qté
1	52-001-03	Foot support	2
2	52-018-04	Mower arm assembly	1
3	305000	Bolt A-63607	2
4	107010	Gearbox LF140A	1
5	300740	Bolt 5/16"-18 x 2 1/2" Long x 7/8" Thread	1
6	300700	Bolt 5/16"-18 x 1" Lenght x 1" Thread	20
7	300520	Bolt 3/8"-16 x 1 1/2" Lenght x 1" Thread	5
8	300300	Bolt 1"-8 x 4" Long x 2 1/4" Thread	2
9	300410	Bolt 3/4"-10 x 2 1/2" Long x 1 3/4" Thread	4
10	301560	Lock Nut 5/16"-18	21
11	301550	Lock Nut 3/8"-16	4
12	301500	Lock Nut 1"-8	2
13	301510	Lock Nut 1/2"-13	24
14	301540	Lock Nut 3/4"-10	4
15	305011	Spline shaft (gearbox)	1
16	120271	HCL 2506 Cylinder	1
17	52-008-042	PTO Cover	1
18	52-007-043	Protector	1
19	301390	Flat Washer 5/16" Broad	10
20	301350	Flat Washer 3/8" Broad	8
21	301340	Flat Washer 3/4" Narrow	1
22	301360	Flat Washer 5/8" Narrow	1
23	301330	Flat Washer 1 1/4" Narrow	1
24	301310	Flat Washer 1/2" Narrow	24
25	301730	Flat Washer 3/8"	1
26	301720	Flat Washer 3/4"	4
27	305010	Blade 25"	2
28	120311	HCL 2506 Cylinder	2
29	52-008-19	Pivot pin	2
30	52-008-20	Cylinder pin	2
31	60-035-022	Washer	2
32	307060	Snap-ring 1"	2
33	52-007-066	Washer	2
34	307062	Snap-ring 1 1/8"	2
35	52-012-04	Square frame assembly	1
36	307070	Snap-ring 1 1/8" heavy	1
37	301900	Hexagonal Nut M12	8
38	301200	Bolt M12-1,75 x 40 mm Lenght	8
39	52-018-032	Side box protector	1
40	52-018-033	Side box protector	1
41	301100	Carriage bolt	24
42	400500	Documents holder tube	1
43	310830	Quick attach DA5050-21	3
44	52-007-20	Blade assembly support	1
47	310740	Quick Stitch	2
48	310750	5/16 chain x 10"	1
49	107040	PTO Transmission 1 3/8 x 6 (A-CS64416)	1
50	107030	PTO Transmission (A-CS53811)	1
51	52-018-05	Brushcutter head assembly	1
52	52-012-03	Arm pivot assembly	1
53	107000	T27D Gearbox	1

Brushcutter Telescopic 5' #52-018



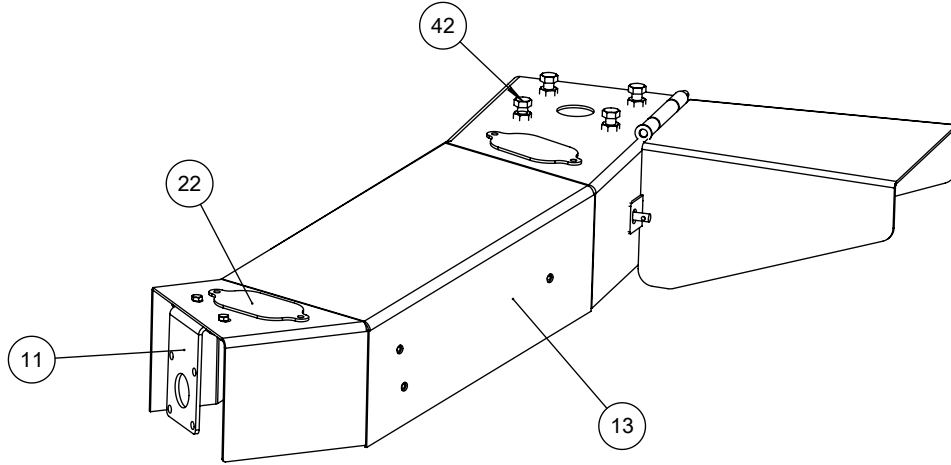
Hydraulic Part list Brushcutter 5 Telescopic			
No.	Part#	Description	Qty
1	120271	Cylindre Hydraulique 2 1/2 Diam. x 6" course	1
2	120311	Cylindre HCL 2514	2
3	120201	Cylindre hydraulique	1
4	101420	Coude 90° - Mâle ORB Ajustable 1/2" - Femelle NPSM Swivel 3/8"	6
5	103230	Adaptateur NPTFS 3/8"-NPTM 3/8" restricteur 1/16" diam.	2
9	103700	T femelle npsm swivel-T femelle npsm swivel-femelle npt	1
10	103420	Mâle 3/8" - NPT x Mâle 3/8" - NPT	1
11	102820	Bouchon 1/2 NPT	2
12	109010	Quick Coupling Mâle x FEM 1/2"-NPT	5
13	105020	Ball valve 3/8 NPT 7350PSI	1
14	140000	Dust caps 1/2" Rouge	5
15	140030-126-101750-101750	Hose hydraulique 3/8	1
16	140030-190-101750-101750	Hose hydraulique 3/8	1
17	140030-184-101750-101750	Hose hydraulique 3/8	1
18	140030-007-101750-101750	Hose 3/8	1
19	140030-182-101740-101750	140030-194-101740-101750	1
20	140030-175-101740-101750	140030-185-101740-101750	1
21	140030-010-101750-101750	Hose 3/8	1

Brushcutter Flex 5' #52-022

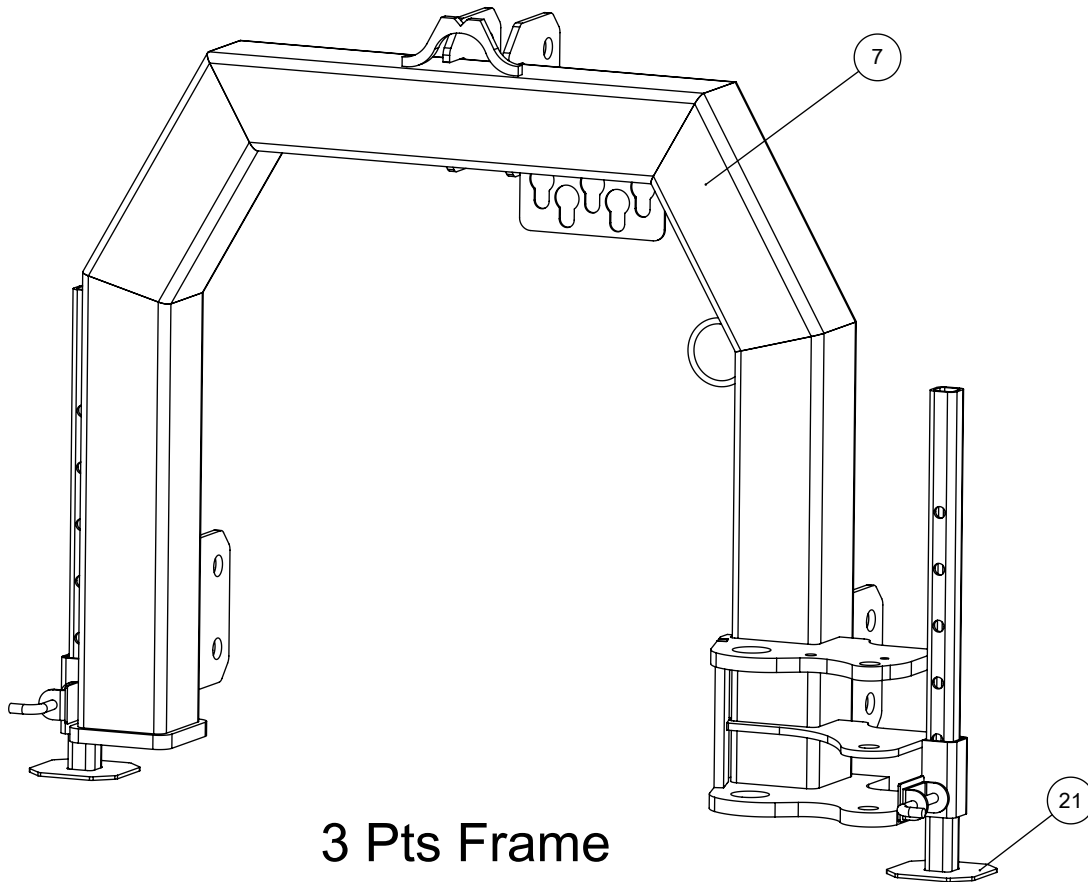


Mower head

Brushcutter Flex 5' #52-022



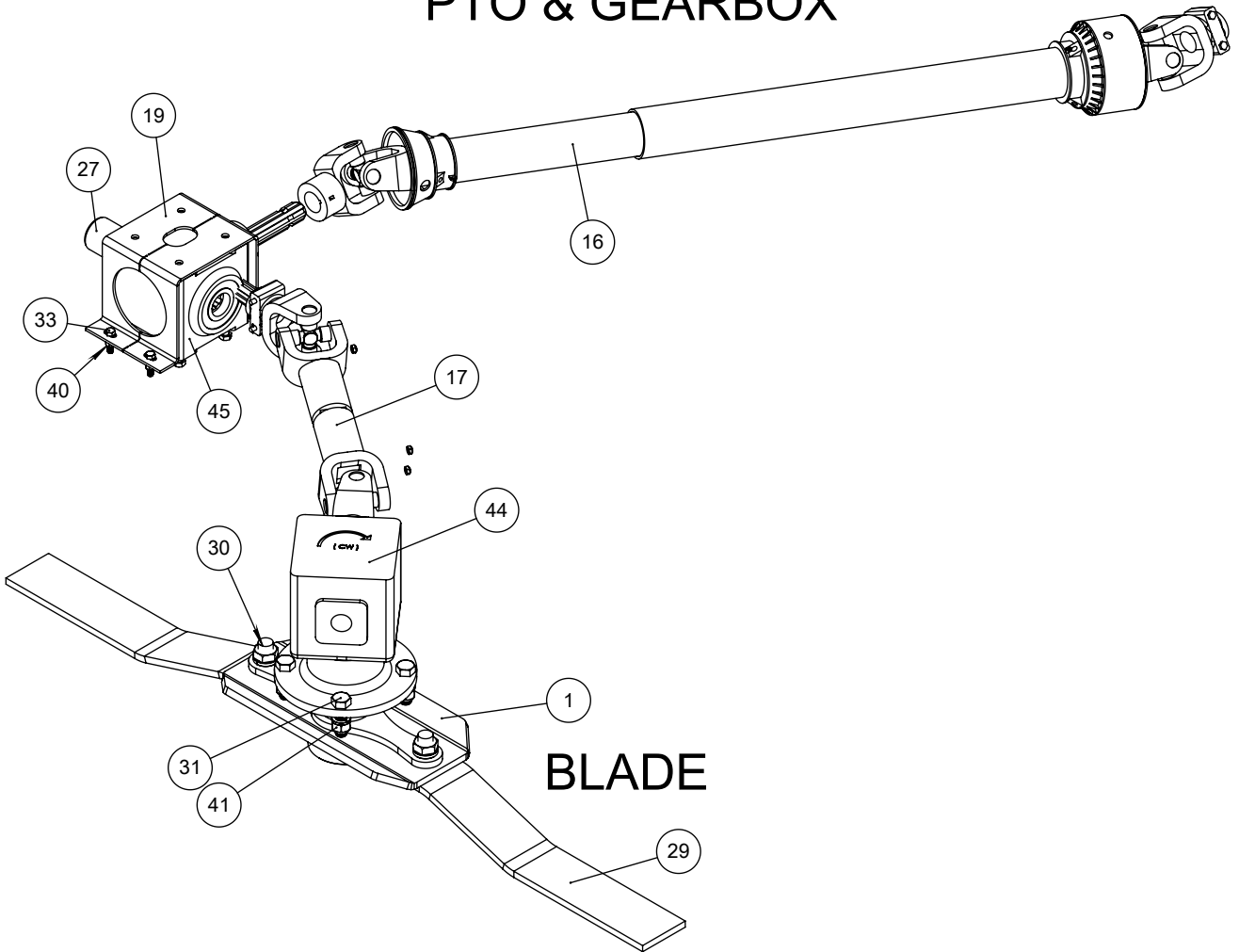
PTO Cover



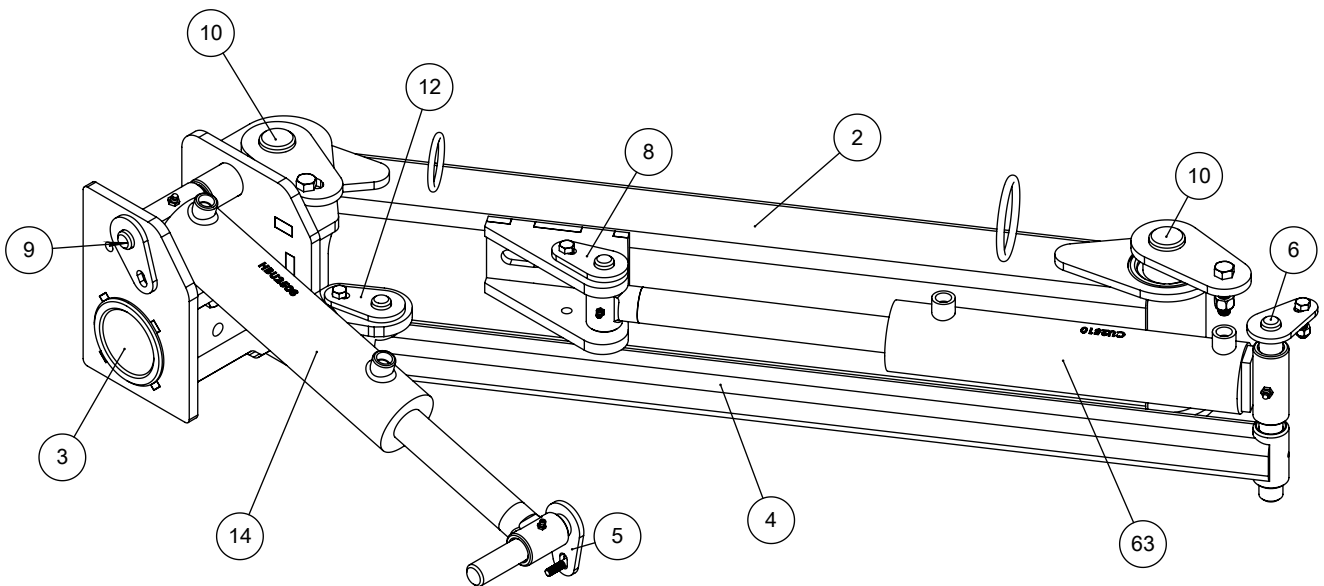
3 Pts Frame

Brushcutter Flex 5' #52-022

PTO & GEARBOX



BLADE

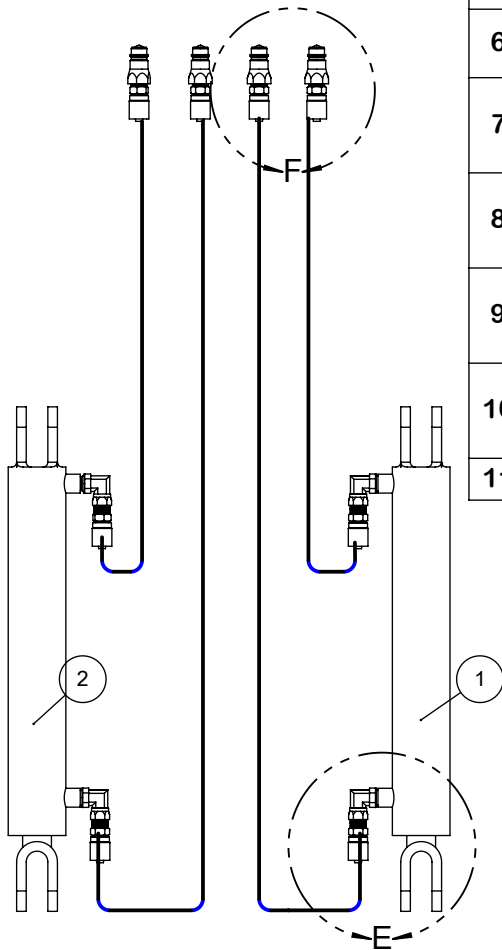
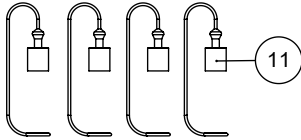


PIVOT ARM

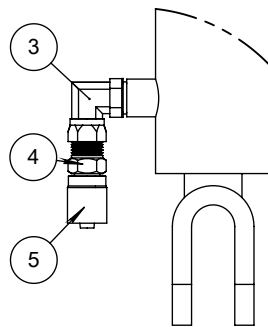
Brushcutter Flex 5' #52-022

No.	#Parts	Description	Qty
1	52-007-20	Blade assembly support	1
2	52-022-02	Arm assembly	1
3	52-022-03	Head pivot assembly	1
4	52-022-05	Retainer arm	1
5	52-022-13	Pivot pin assembly	1
6	52-022-12	Pivot pin assembly	1
7	52-022-11	3 Pts frame assembly	1
8	52-022-15	Pivot pin assembly	1
9	52-022-14	Pivot pin assembly	1
10	52-022-17	Pivot pin assembly	2
11	52-022-19	PTO cover retainer assembly	1
12	52-022-16	Pivot pin assembly	1
13	52-023-18	PTO Protector assembly	1
14	120280	HBU 2508 Cylinder	1
15	52-022-21	HBU 2510 Modified Cylinder	1
16	107050	PTO Transmission T50	1
17	107043	PTO Transmission T50 Short	1
18	52-021-101	Plastic tube 2 1/2" O.D. x 2" I.D.	2
19	52-008-042	PTO Cover	1
21	52-001-03	Foot support	2
22	52-021-098	PTO Cover plate	2
23	52-022-08	Brushcutter Flex 5' Complete Head assembly with Hub	1
24	52-007-26	Brushcutter chain wall protector	1
25	52-007-24	Brushcutter chain wall protector - Left side	1
26	52-007-28	Brushcutter chain wall protector - Right side	1
27	52-008-25	Gearbox Cap	1
28	52-022-050	Tube 2 x 2 x 1/4	1
29	305010	Brushcutter Blade	2
30	305000	Bolt A-63607	2
31	300410	Bolt 3/4"-10 x 2 1/2" Long x 1 3/4" Thread	4
32	301720	Flat Washer 3/4"	4
33	300520	Bolt 3/8"-16 x 1 1/2" Length x 1" Thread	8
34	300030	Bolt 1/2"-13 x 2" Length x 1 1/4" Thread	2
35	300710	Bolt 5/16"-18 x 1 1/4" Length x 7/8" Thread	1
36	300080	Bolt 1/2"-13 x 4 1/2" Long x 1 1/4" Thread	1
37	300200	Bolt 1/4"-20 x 1" Length x 1" Thread	2
38	301510	Lock Nut 1/2"-13	3
39	301560	Lock Nut 5/16"-18	1
40	301550	Lock Nut 3/8"-16	8
41	301540	Lock Nut 3/4"-10	4
42	301200	Bolt M12-1,75 x 40 mm Length	8
43	301900	Hexagonal Nut M12	8
44	107010	Gearbox LF140A	1
45	107000	T27D Gearbox	1

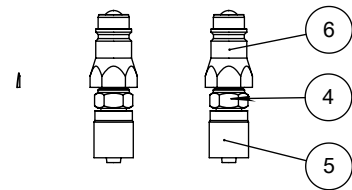
Brushcutter Flex 5' #52-022



#	Part #	Description	Qty
1	210290	Cylindre hydraulique 2 1/2" Dia. x 10" Course	1
2	210080	Cylindre hydraulique 2-1/2" Dia x 8" de course	1
3	101420	Coude 90° - Mâle ORB Ajustable 1/2" - Femelle NPSM Swivel 3/8"	4
4	101740	Embout hyd. 3/8" X Mâle 1/2"-NPT	8
5	104340	Bague extrémité 3/8" Dia.	8
6	109010	Quick Coupling Mâle x FEM 1/2"-NPT	4
7	140030-080-101750-101740	Assemblage Hydraulique hose 3/8 x 80`` M12810-06-06 x M12810-06-08	1
8	140030-092-101750-101740	Assemblage Hydraulique hose 3/8 x 92`` M12810-06-06 x M12810-06-08	1
9	140030-112-101750-101740	Assemblage Hydraulique hose 3/8 x 112`` M12810-06-06 x M12810-06-08	1
10	140030-122-101750-101740	Assemblage Hydraulique hose 3/8 x 122`` M12810-06-06 x M12810-06-08	1
11	140000	Dust caps 1/2" Rouge	4



DÉTAIL E
ECHELLE 1 : 5



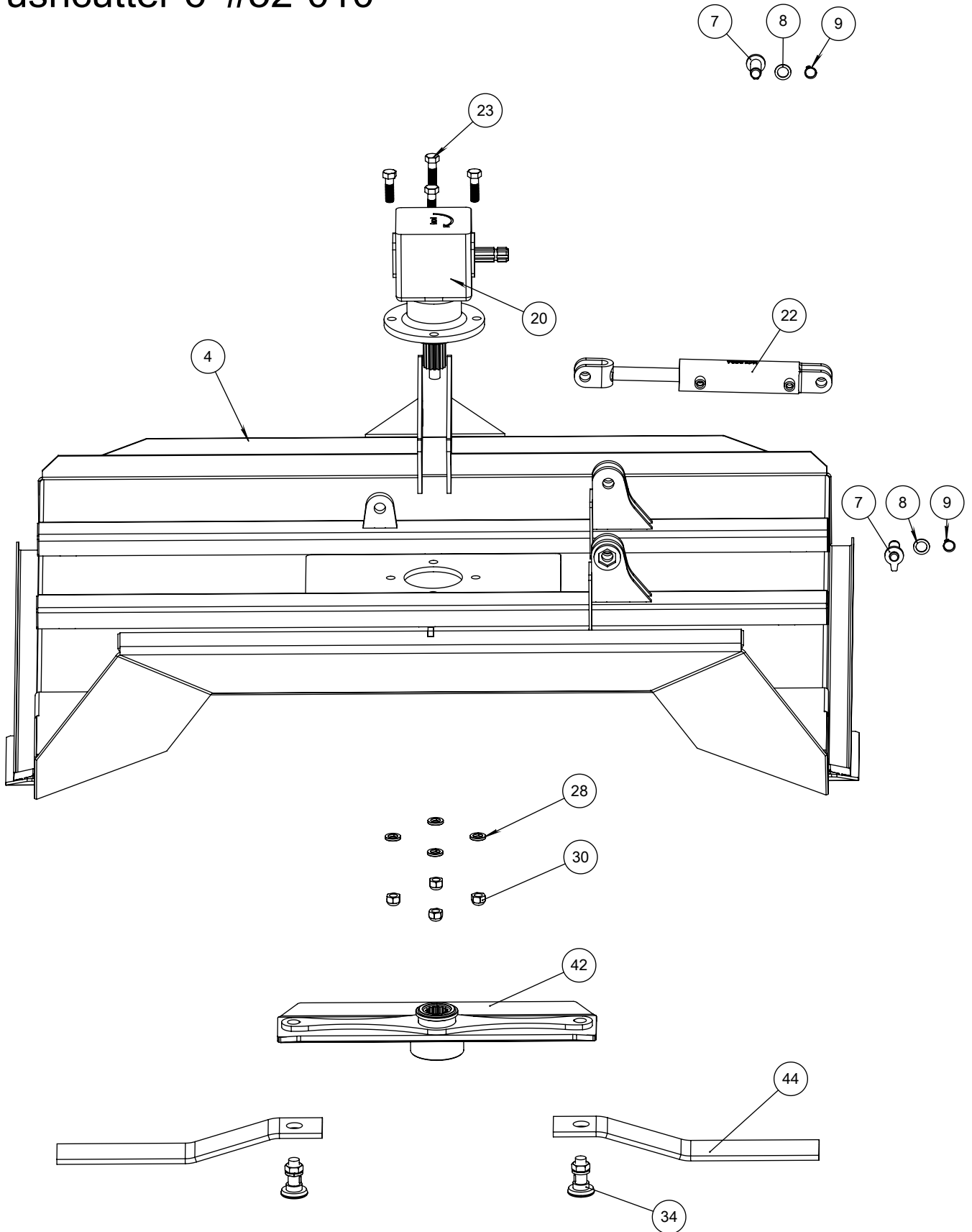
DÉTAIL F
ECHELLE 1 : 5

Brushcutter parts manual

STANDARD, TELESCOPIC & FLEX SERIES



Brushcutter 6' #52-010

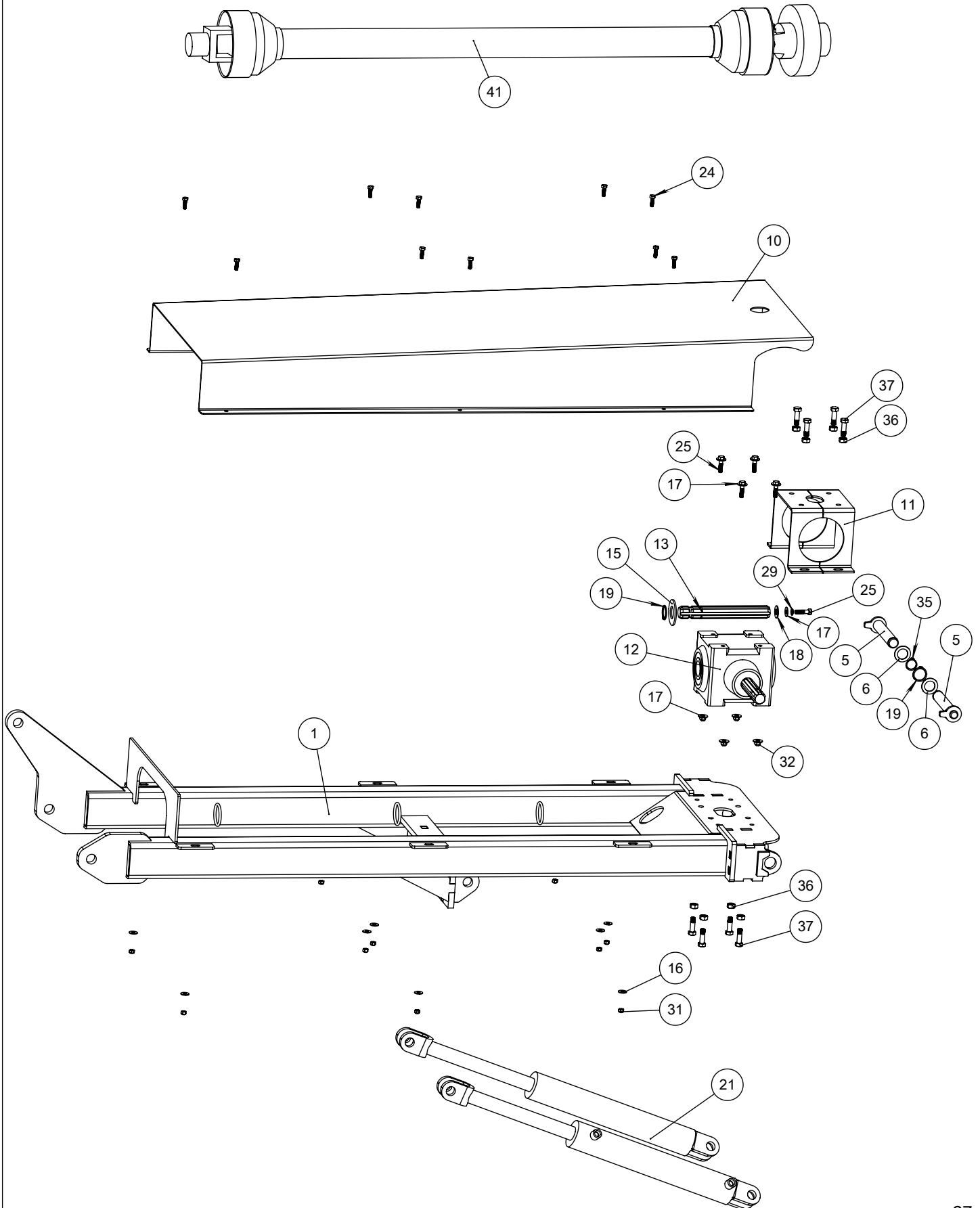


Brushcutter parts manual

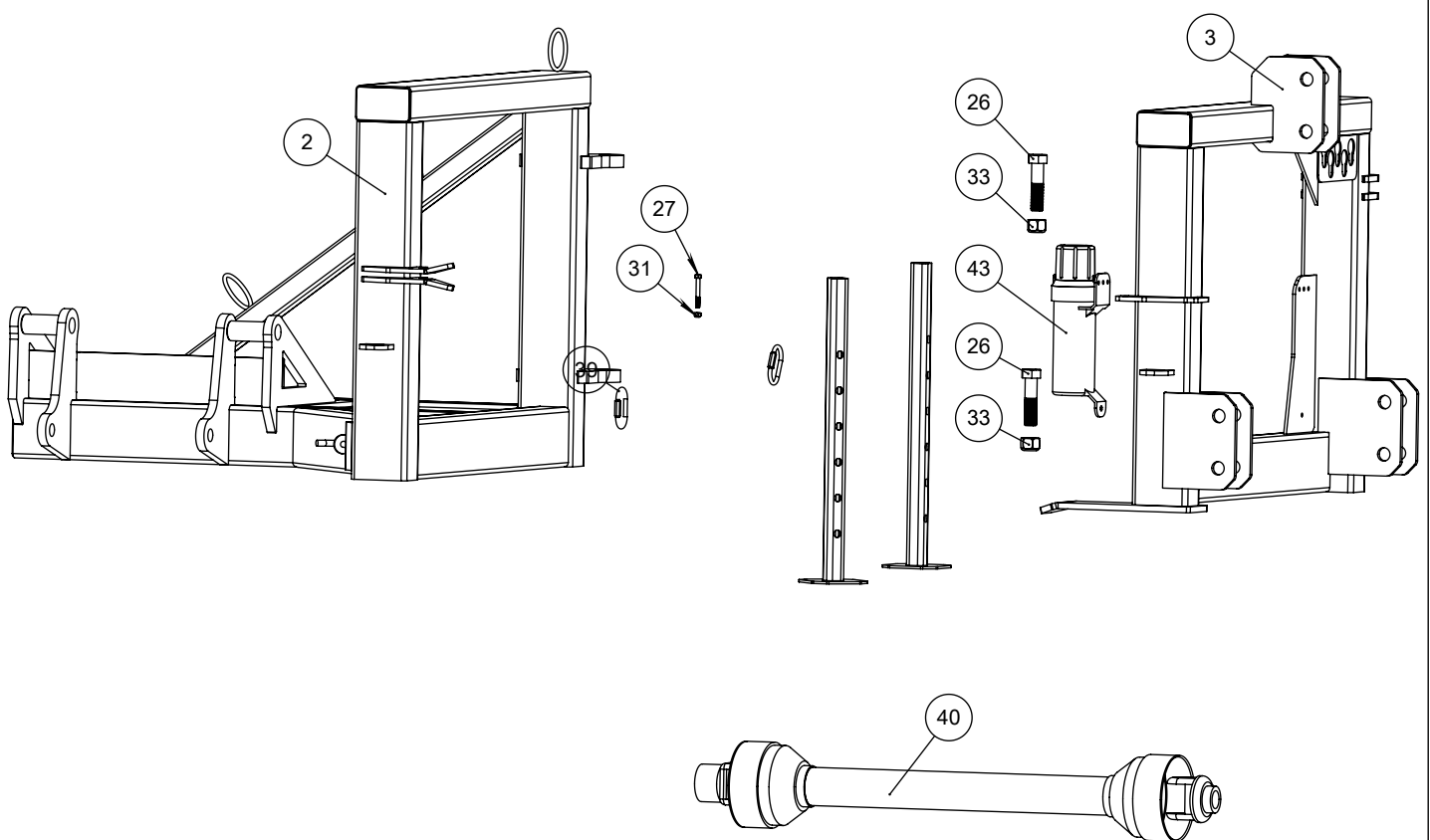
STANDARD, TELESCOPIC & FLEX SERIES



Brushcutter 6' #52-010



Brushcutter 6' #52-010



Brushcutter 6' #52-010

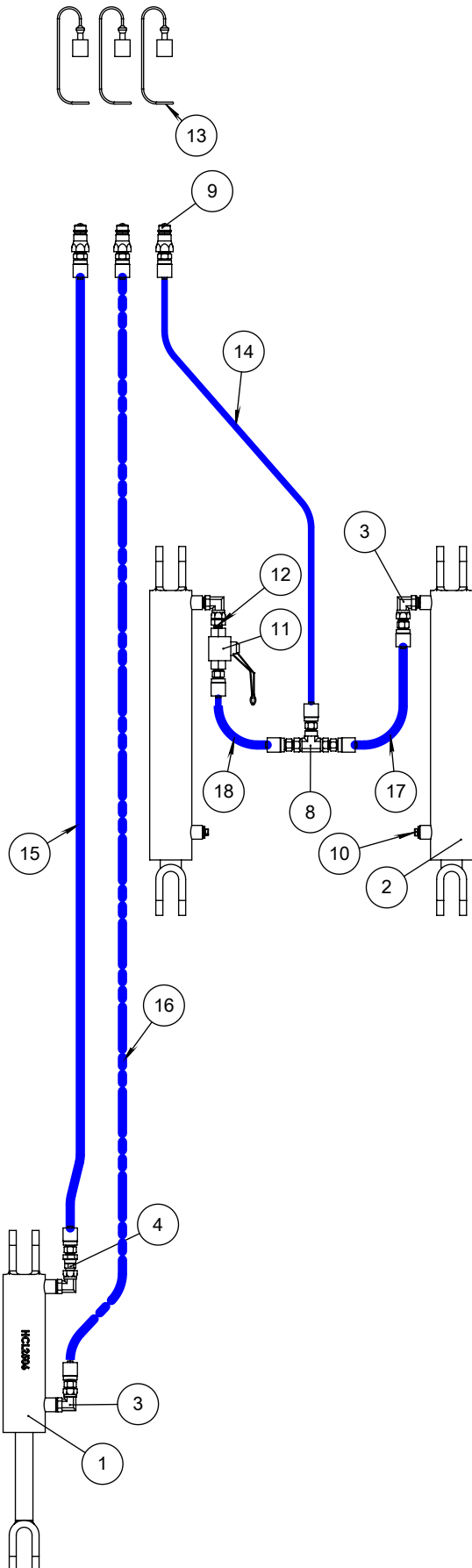
No.	# de pièce	Description_En	Qté
1	52-008-16	Arm frame assembly	1
2	52-008-21	Master pivot frame assembly	1
3	52-008-22	3 Pts frame assembly	1
4	52-008-17	Mower head assembly	1
5	52-008-19	Pivot pin	2
6	52-007-066	Washer	2
7	52-008-20	Cylinder pin	2
8	60-035-022	Washer	2
9	307060	Snap-ring 1"	2
10	52-008-043	PTO protection cover	1
11	52-008-042	PTO Cover	1
12	107000	T27D Gearbox	1
13	305011	Spline shaft (gearbox)	1
14	52-001-03	Foot support	2
15	301330	Flat Washer 1 1/4" Narrow	1
16	301390	Flat Washer 5/16" Broad	10
17	301350	Flat Washer 3/8" Broad	9
18	301360	Flat Washer 5/8" Narrow	1
19	307070	Snap-ring 1 1/8" heavy	2
20	107010	Gearbox LF140A	1
21	120311	HCL Cylinder 2514	2
22	120271	HCL 2506 Cylinder	1
23	300410	Bolt 3/4"-10 x 2 1/2" Long x 1 3/4" Thread	4
24	300700	Bolt 5/16"-18 x 1" Length x 1" Thread	10
25	300520	Bolt 3/8"-16 x 1 1/2" Length x 1" Thread	5
26	300300	Bolt 1"-8 x 4" Long x 2 1/4" Thread	2
27	300740	Bolt 5/16"-18 x 2 1/2" Long x 7/8" Thread	1
28	301770	Flat Washer 7/8"	4
29	301730	Flat Washer 3/8"	1
30	301540	Lock Nut 3/4"-10	4
31	301560	Lock Nut 5/16"-18	11
32	301550	Lock Nut 3/8"-16	4
33	301500	Lock Nut 1"-8	2
34	305000	Bolt A-63607	2
35	307062	Snap-ring 1 1/8"	1
36	301900	Hexagonal Nut M12	8
37	301200	Bolt M12-1,75 x 40 mm Length	8
38	310750	5/16 chain x 10"	1
39	310740	Quick Stitch	2
40	107030	PTO Transmission (A-CS53811)	1
41	107040	PTO Transmission 1 3/8 x 6 (A-CS64416)	1
42	52-008-24	Blade support assembly	1
43	400500	Documents holder tube	1
44	305010	Brushcutter Blade	2

Brushcutter parts manual

STANDARD, TELESCOPIC & FLEX SERIES

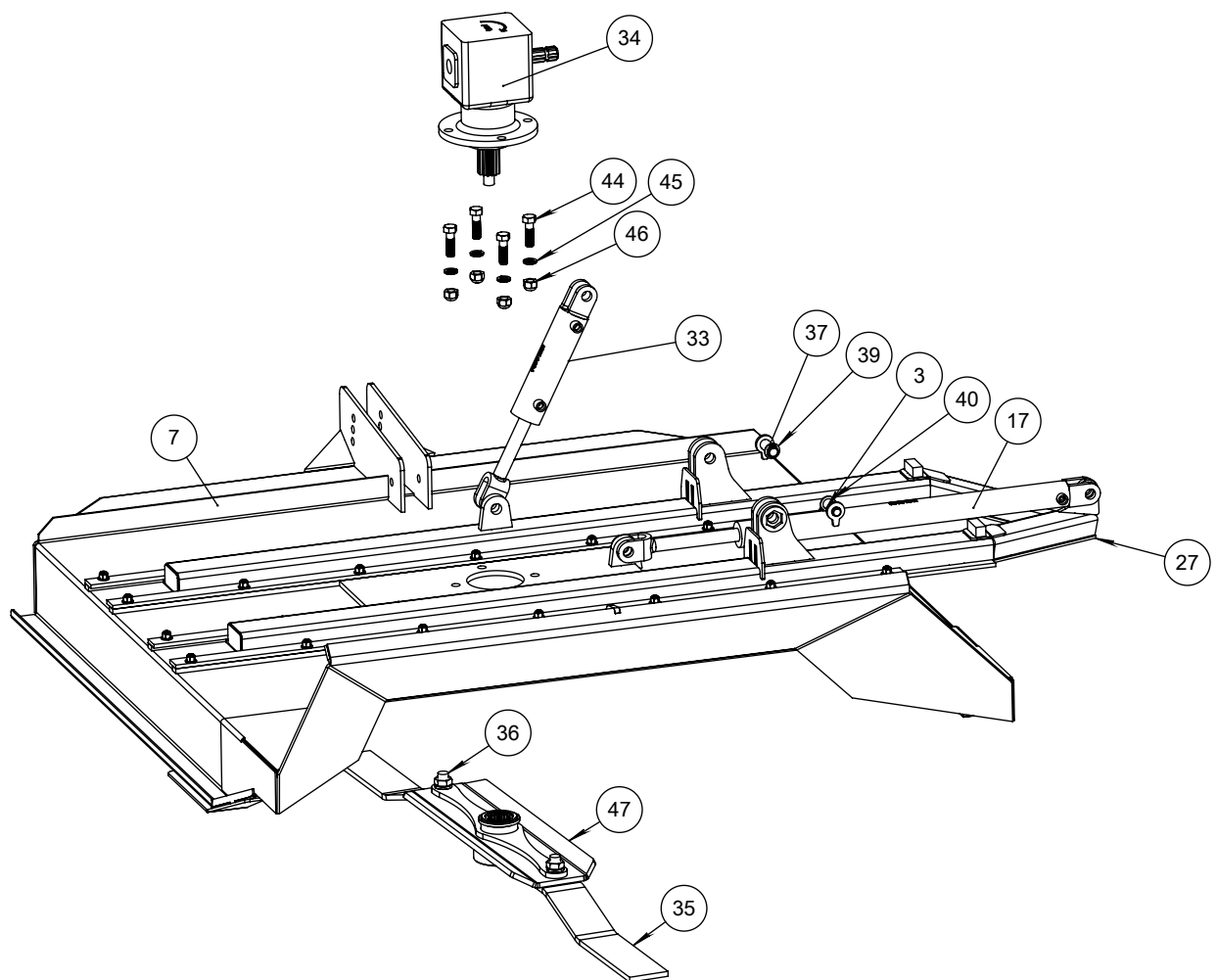


Brushcutter 6' #52-010



No.	Part #	Description	Qty
1	120271	Cylindre Hydraulique 2 1/2 Diam. x 6" course	1
2	120311	Cylindre HCL 2514	2
3	101420	Coude 90° - Mâle ORB Ajustable 1/2" - Femelle NPSM Swivel 3/8"	4
4	103230	Adapteur NPTFS 3/8"-NPTM 3/8" restricteur 1/16" diam.	1
8	103700	T femelle npsm swivel-T femelle npsm swivel-femelle npt	1
9	109010	Quick Coupling Mâle x FEM 1/2"-NPT	3
10	102820	Bouchon 1/2 NPT	2
11	105020	Ball valve 3/8 NPT 7350PSI	1
12	103420	Mâle 3/8" - NPT x Mâle 3/8" - NPT	1
13	140000	Dust caps 1/2" Rouge	3
14	140030-126-101750-101750	Hose hydraulique 3/8	1
15	140030-184-101750-101750	Hose hydraulique 3/8	1
16	140030-190-101750-101750	Hose hydraulique 3/8	1
17	140030-010-101750-101750	Hose hydraulique 3/8	1
18	140030-007-101750-101750	Hose hydraulique 3/8	1

Brushcutter 6' Telescopic #52-019

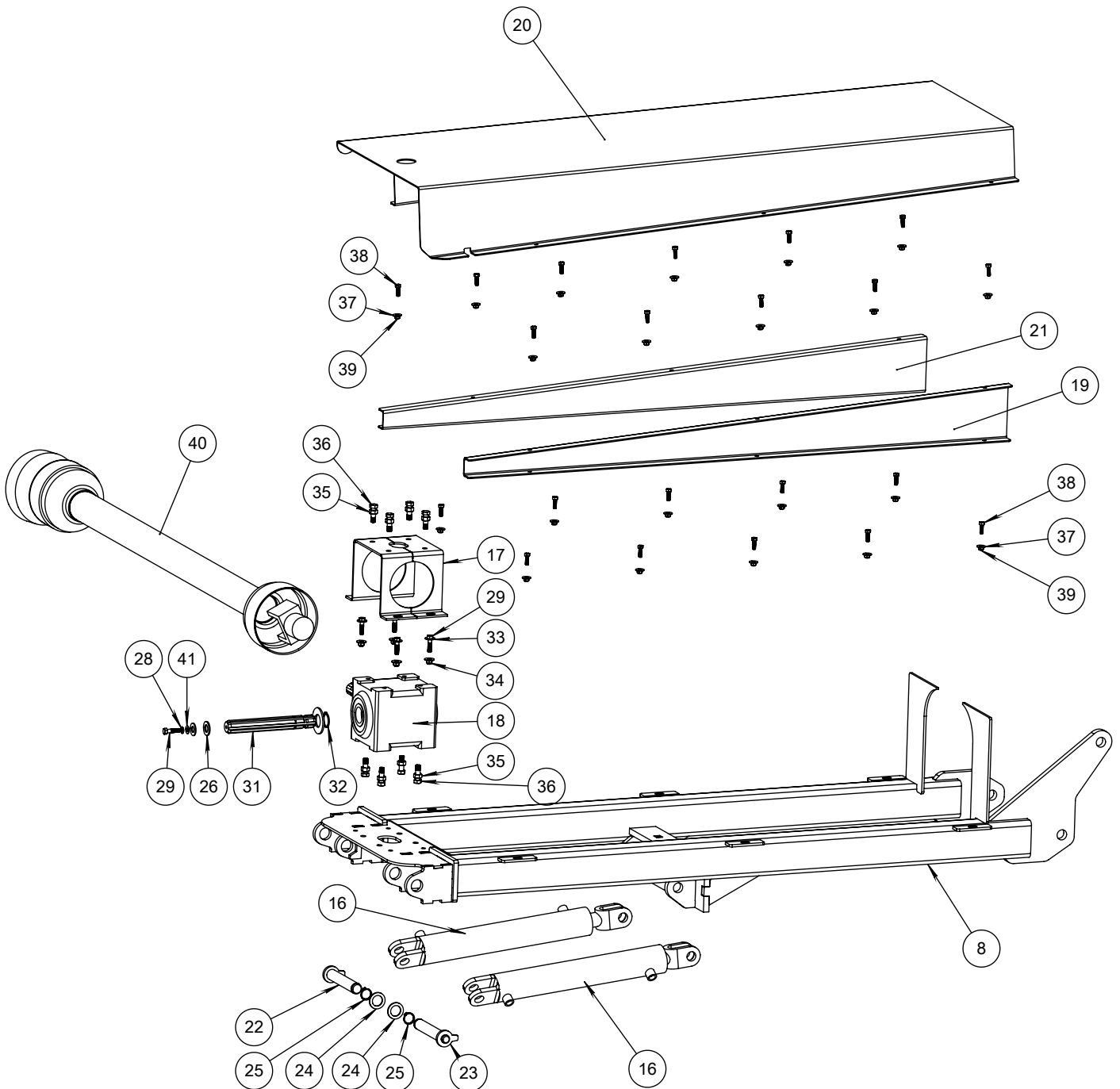


Brushcutter parts manual

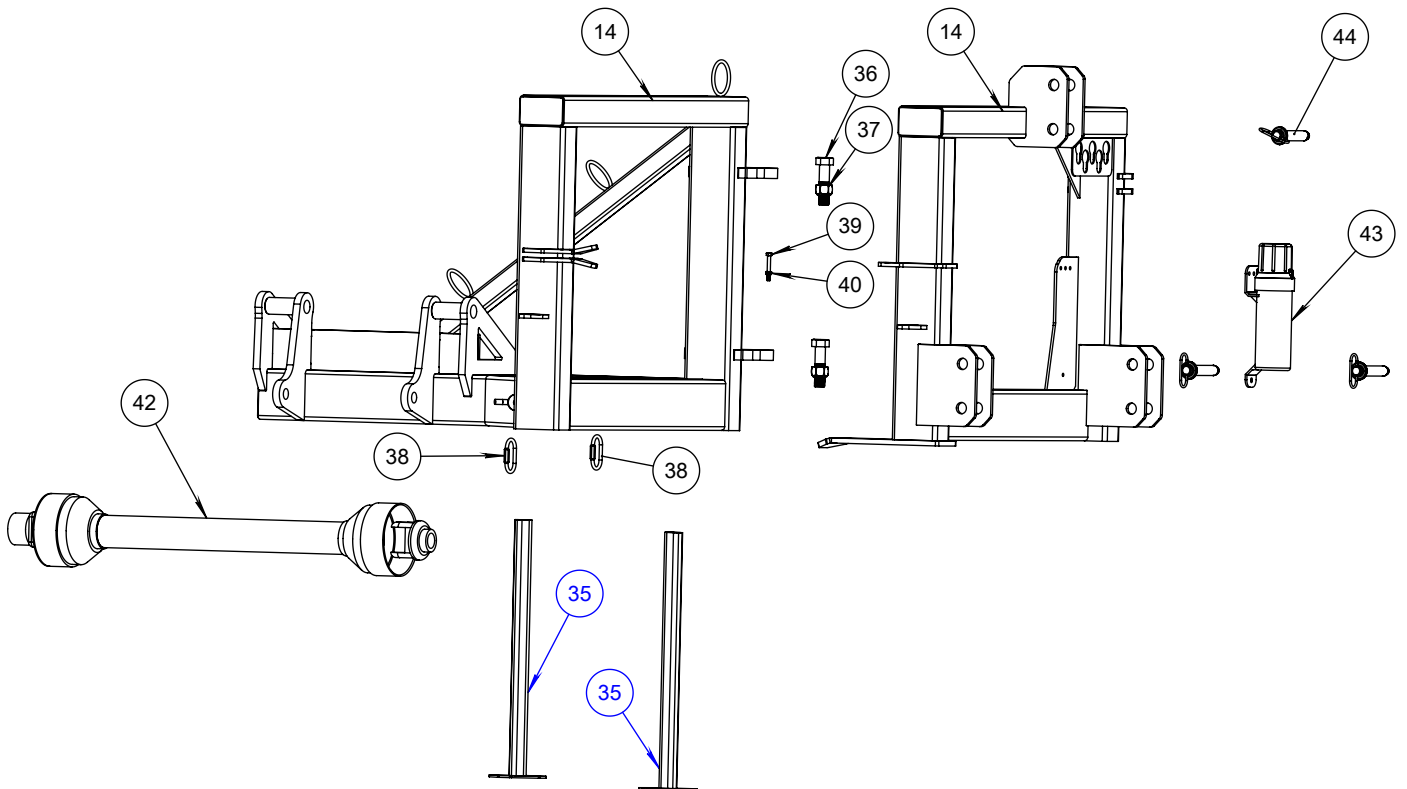
STANDARD, TELESCOPIC & FLEX SERIES



Brushcutter 6' Telescopic #52-019



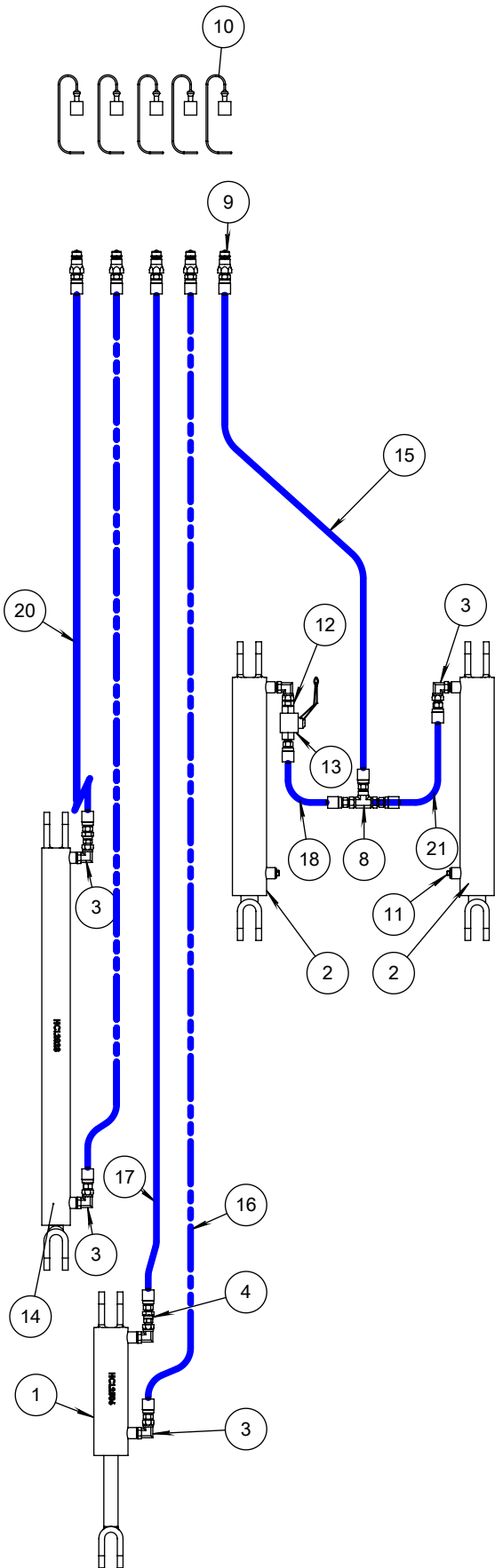
Brushcutter 6' Telescopic #52-019



Brushcutter 6' Telescopic #52-019

No.	# de pièce	Nom	Qté
1	52-008-21	Structure d'attache 3 points	1
2	52-008-22	Structure d'attache 3 points débroussailleuse 6'	1
3	52-019-03	Baume pivot de débroussailleuse 6'	1
4	52-019-05	Tête de débroussailleuse 6' télescopique	1
5	120201	Cylindre hydraulique	1
6	52-019-06	Extension débroussailleuse 6'	1
7	120271	Cylindre Hydraulique 2 1/2 Diam. x 6" course	1
8	120311	Cylindre HCL 2514	2
9	52-001-03	Pied support de structure / Foot structure support	2
10	107010	Boite engrenage LF140A / GearBox	1
11	305010	Débroussailleuse couteau / Brushcutter Knife	2
12	305000	Kit Écrou et Contre-Écrou (2x kit) / Screw Kit (2x)	2
13	52-008-20	Barrure de cylindre gros boom	2
14	60-035-022	Rondelle	2
15	307060	Snap-Ring 1" épais	2
16	52-008-042	Couvert pour PTO / PTO Cover	1
17	107000	Gear Box T27D	1
18	52-019-017	Coté boîte de protection	1
19	52-008-043	Tôle protectrice	1
20	52-019-018	Coté de boîte de protection	1
21	52-008-19	Grosse pine de pivot	2
22	300410	Boulon 3/4"-10 x 2 1/2" Long	33
23	301540	Nylon nut 3/4"-10	60
24	52-007-066	Rondelle	2
25	307062	Snap-Ring 1 1/8" épais	2
26	310740	MMaillon rapide	2
27	310750	MMChaine 5/16	1
28	301340	Rondelle Plat 3/4" Étroite	61
29	301730	Rondelle frein 3/8"	5
30	305011	shaft a spline (gear box)	1
31	307070	Snap-Ring 1 3/8" Heavy	1
32	301900	Écrou hexagonal M12	8
33	301200	Boulon M12-1,75 x 40mm Long x 40 mm Filet	8
34	301100	Carriage Bolt 1/2"-13 UNC x 1 3/4" Long x 1 1/2" fliet	28
35	107030	Transmission à cadran (A-CS53811)	1
36	107040	Transmission à cadran 1 3/8 x 6 (A-CS64416)	1
37	400500	Porte document	1
38	310830	Goupille d'attache forgée 1" x 4 3/4" Long	3
39	52-008-24	Support couteau 6' / 6' blades support	1

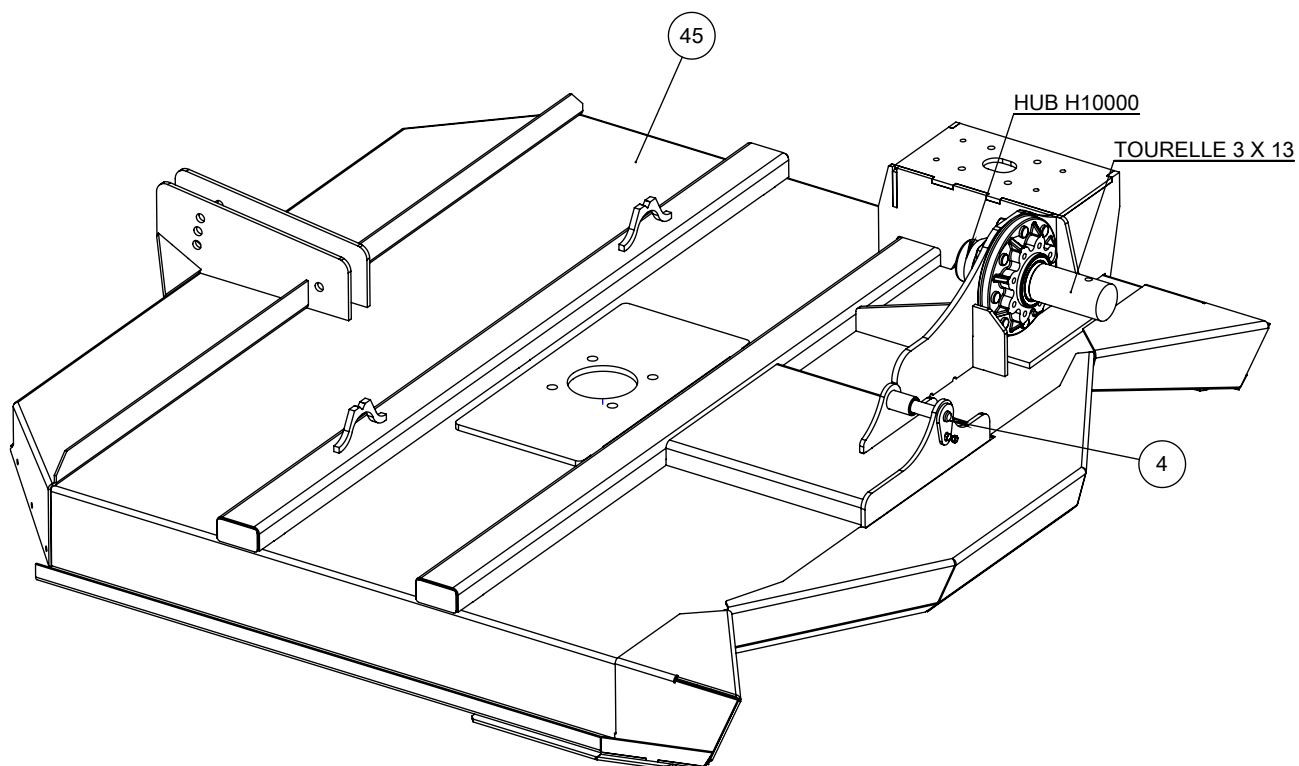
Brushcutter 6' Telescopic #52-019



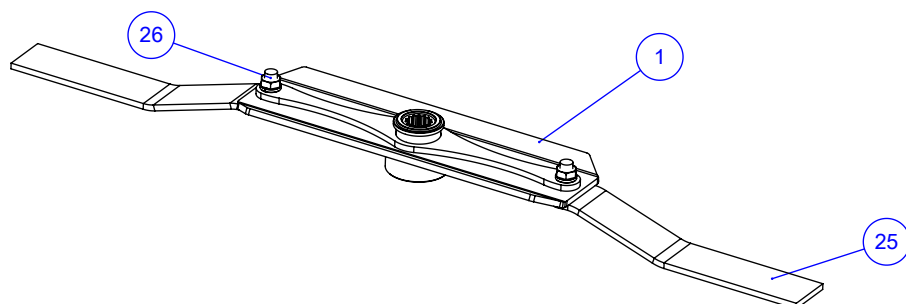
Hydraulic Parts

No.	# de pièce	Nom	Qté
1	120271	Cylindre Hydraulique 2 1/2 Diam. x 6" course	1
2	120311	Cylindre HCL 2514	2
3	101420	Coude 90° - Mâle ORB Ajustable 1/2" - Femelle NPSM Swivel 3/8"	6
4	103230	Adapteur NPTFS 3/8" - NPTM 3/8" restricteur 1/16" diam.	2
5	104340	Bague extrémité 3/8" Dia.	14
6	101750	Embout hyd. 3/8" X Mâle 3/8"-NPT	9
7	101740	Embout hyd. 3/8" X Mâle 1/2"-NPT	5
8	103700	T femelle npsm swivel- T femelle npsm swivel- femelle npt	1
9	109010	Quick Coupling Mâle x FEM 1/2"-NPT	5
10	140000	Dust caps 1/2" Rouge	5
11	102820	Bouchon 1/2 NPT	2
12	103420	Mâle 3/8" - NPT x Mâle 3/8" - NPT	1
13	105020	Ball valve 3/8 NPT 7350PSI	1
14	120201	Cylindre hydraulique	1
15	140030-132-101750-101750	Hose hydraulique 3/8	1
16	140030-204-101750-101750	Hose hydraulique 3/8	1
17	140030-196-101750-101750	Hose hydraulique 3/8	1
18	140030-007-101750-101750	Hose 3/8	1
19	140030-194-101740-101750	140030-194-101740-101750	1
20	140030-185-101740-101750	140030-185-101740-101750	1
21	140030-010-101750-101750	Hose 3/8	1

Brushcutter 6' FLEX #52-021

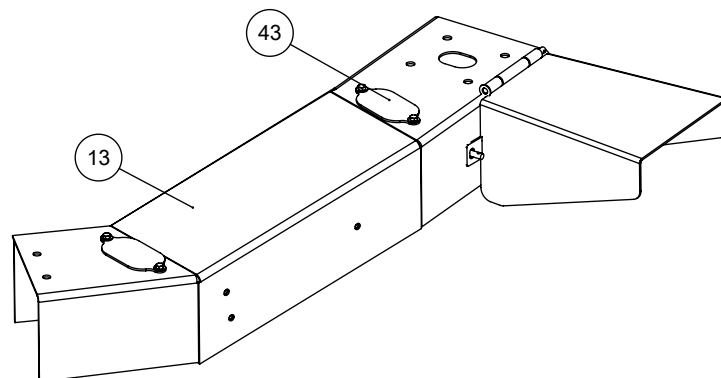


Mower assembly

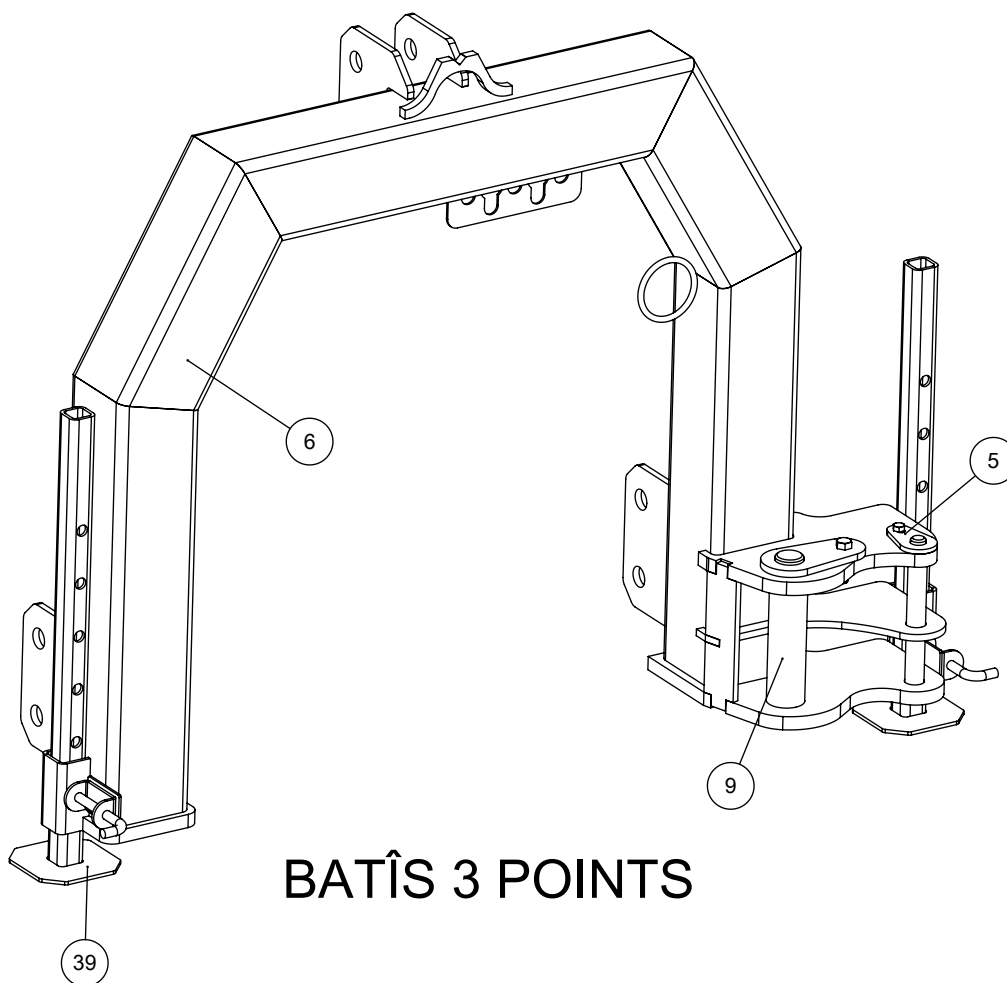


Blade Assembly

Brushcutter 6' FLEX #52-021



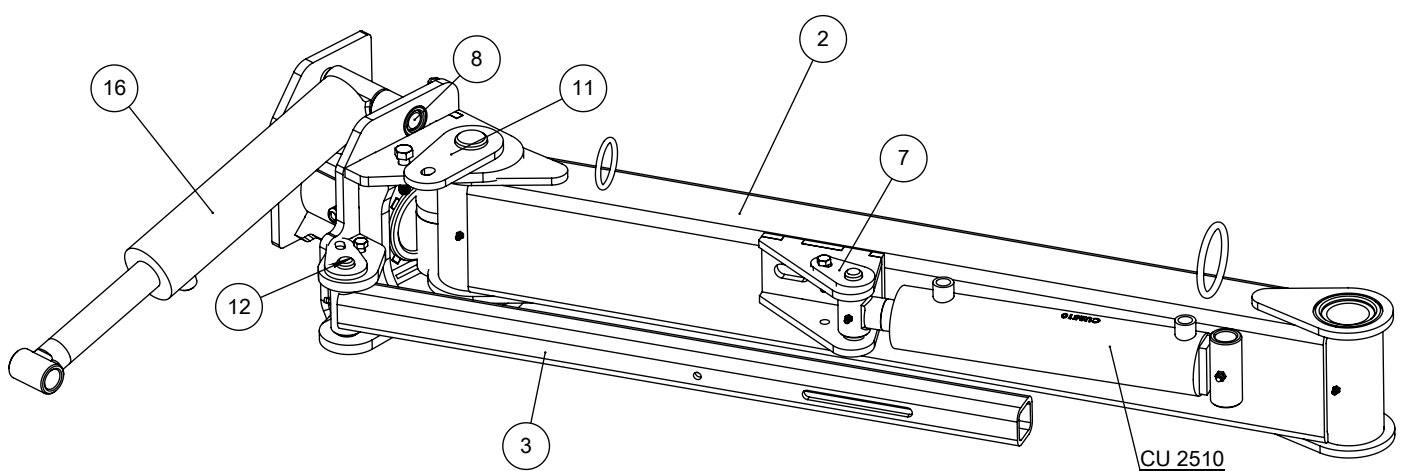
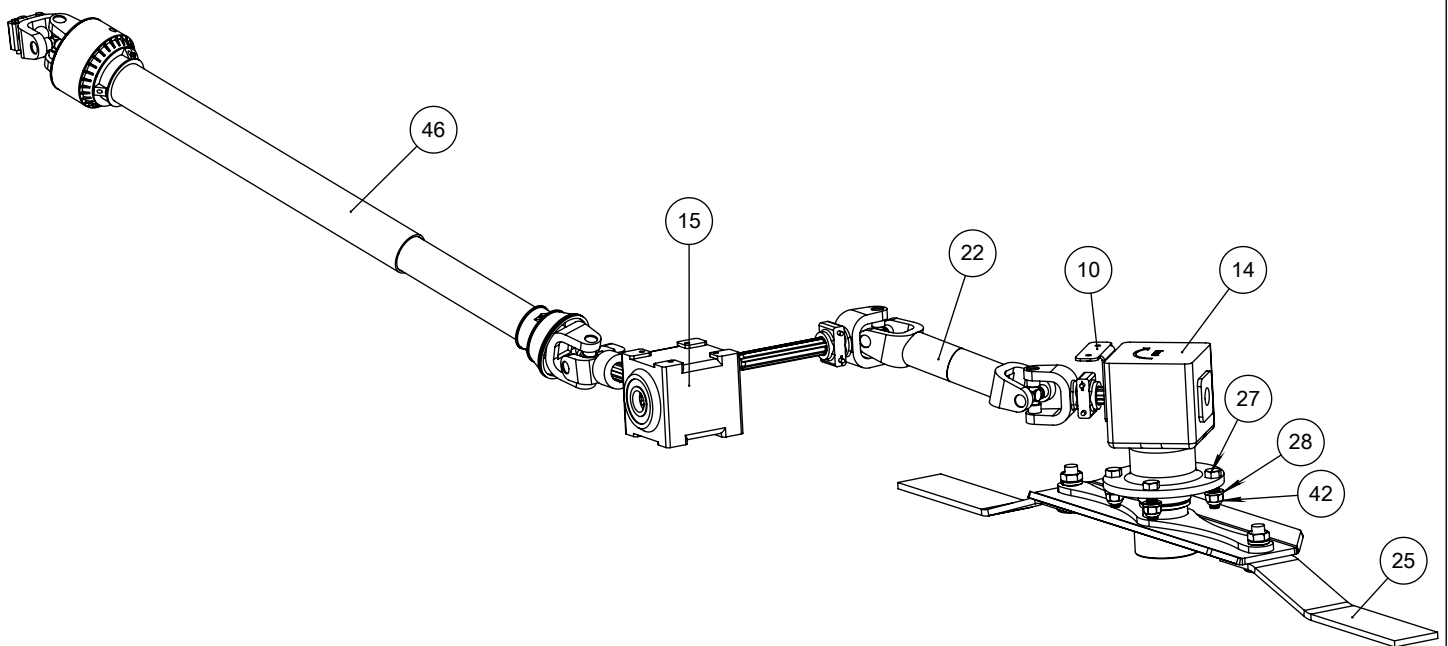
COUVERT DU PTO



BATÎS 3 POINTS

Brushcutter 6' FLEX #52-021

PTO & GEARBOX



FLEX ARM

Brushcutter 6' FLEX #52-021

#	# de pièce	Description	Qty
1	52-008-24	Blade support assembly	1
2	52-021-02	Pivot arms	1
3	52-021-05	Return arms 6'	1
4	52-021-08	Pivot pin	1
5	52-021-10	Pivot pin	1
6	52-021-11	6' Flex body frame	1
7	52-021-12	Pivot pin	1
8	52-021-13	Pivot pin	1
9	52-021-14	Pivot Pin	1
10	52-021-15	PTO Cover retainer bracket	1
11	52-021-16	Pivot pin	1
12	52-021-17	Pivot pin	1
13	52-021-18	Protector PTO	1
14	107010	Gearbox LF140A	1
15	107000	T27D Gearbox	1
16	120280	HBU 2508 Cylinder	1
20	107043	T50-041P025363-025363	1
23	52-021-101	Plastic tube 2 1/2" O.D. x 2" I.D.	2
24	52-008-042	PTO Cover	1
25	305010	Brushcutter Blade	2
26	305000	Bolt A-63607	2
27	300410	Bolt 3/4"-10 x 2 1/2" Long x 1 3/4" Thread	4
28	301770	Flat Washer 7/8"	4
29	300520	Bolt 3/8"-16 x 1 1/2" Length x 1" Thread	8
30	300030	Bolt 1/2"-13 x 2" Length x 1 1/4" Thread	2
34	300200	Bolt 1/4"-20 x 1" Length x 1" Thread	6
35	301510	Lock Nut 1/2"-13	4
37	301550	Lock Nut 3/8"-16	9
39	52-001-03	Foot support	2
41	52-021-04	Mower pivot 6' Flex	1
42	301540	Lock Nut 3/4"-10	4
43	52-021-098	PTO Cover plate	2
44	301400	Flat Washer 1/4" Broad	4
45	52-021-27	6' Flex head	1
46	107050	T50 151P025363-252011-W/GR.F 218375	1
47	52-021-06	Retainer arm	1
48	300550	Bolt 3/8"-16 x 3" Long x 1" Thread	1
49	300060	Bolt 1/2"-13 x 3 1/2" Long x 1 1/4" Thread	1

Brushcutter parts manual

STANDARD, TELESCOPIC & FLEX SERIES



Brushcutter 6' FLEX #52-021

No.	Part#	Description_En	QTE
1	210290	HCL 2510 - Hydraulic Cylinder 2 1/2" Dia. x 10"	1
2	210080	HCL 2508 -Hydraulic Cylinder 2-1/2" Dia x 8"	1
3	101420	90 Elbow Male ORB Ajust. - Male NPSM Swivel	4
4	101740	M12810 Male NPTF	8
5	104340	M03400 Band	8
6	109010	Quick Coupling Mâle x FEM 1/2"-NPT	4
7	140030-080-101750-101740	Assemblage Hydraulique hose 3/8 x 80`` M12810-06-06 x M12810-06-08	1
8	140030-092-101750-101740	Assemblage Hydraulique hose 3/8 x 92`` M12810-06-06 x M12810-06-08	1
9	140030-112-101750-101740	Assemblage Hydraulique hose 3/8 x 112`` M12810-06-06 x M12810-06-08	1
10	140000	Dust caps 1/2" Red	4
12	140030-122-101750-101740	Hose Hydraulic 122"	1

