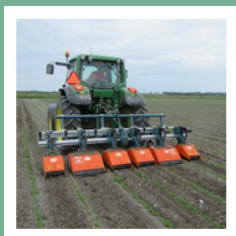


THREE-POINT ATTACHMENTS CATALOG



TILLERS

MOWERS

CULTIVATORS

LANDSCAPING EQUIPMENT

DRILLS & PLANTERS

TURF EQUIPMENT

SEEDERS & SPREADERS

FENCING EQUIPMENT

MISCELLANEOUS

3-POINT ATTACHMENTS
PRODUCT CATALOG

Tillage

Tillers	6-14
Power Harrows	15-18
Angle Frame Disc Harrows	19
Disc Harrows	20
Plows	21-23
Rippers	24-25
Chain Harrows	26

Mowers

Flail Mowers	27-41
Finish Mowers	42-44
Boom Mowers	45-47
Rotary Cutters	48
Drum Mowers	49
Sickle Bar Mowers	50

Cultivators

Light Duty Cultivators	51
Medium Duty Cultivators	52
Heavy Duty Cultivators	53
“C” Tine Cultivators	54
“S” Tine Cultivators	55
Arena-Vators	56
Soil Conditioners	57
Arena Harrows	58
Disc Bedders	59

Landscaping Equipment

Box Scrapers	60
Road Grader Blade	61
Rear Blades	62
Power Rakes	63-64
Landscape Rakes	65
Roller Compactors	66

Drills & Planters

Seed Drills	67-72
Potato Planters	73
Potato Diggers	74
Planters	75

Turf Equipment

Aerators	76
Debris Blowers	77

Spreaders & Sprayers

Seeders	78
Spreaders	79-81
Compost Spreaders	82
Sprayers	83

Fencing Equipment

Post Drivers	84-85
Post Hole Diggers	86-87

Miscellaneous

Forestry Winches	88
Stump Grinders	89-90
3-Point Forks	91
Cement Mixers	92
Carry-Alls & Boom Poles	93
Reversible Scoops	94
Rotary Brooms	95

Contact Information

Hayward Distributing Co.	800-282-1585
Ag & Construction	888-222-8455
J.S. Woodhouse Division	413-736-5462

sales@haydist.com
haydist.com

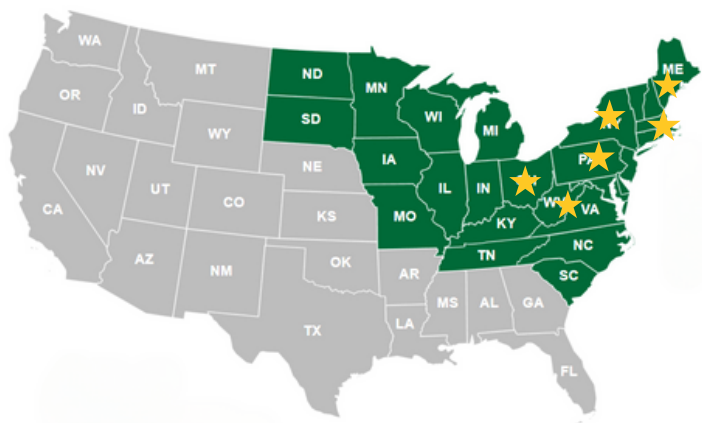
Locations

Hayward Distributing Co. Main Office	J.S. Woodhouse Division Main Office
4061 Perimeter Dr. Columbus, OH	1314 Union St Exd West Springfield, MA

Fairfield, ME	Ephrata, PA
Raphine, VA	Syracuse, NY

EXCEPTIONAL FIELD SUPPORT

About 30 field team members live within and regularly travel the green area. Our field team is equipped with trailers and the resources to perform equipment demos, provide product support and more.



**SIX WAREHOUSE LOCATIONS
WITH APPROXIMATELY 250,000
SQUARE FEET OF INDOOR SPACE**

Contact Information

Hayward Distributing Co. 800-282-1585
Ag & Construction 888-222-8455
J.S. Woodhouse Division 413-736-5462

sales@haydist.com
haydist.com

Locations

Hayward Distributing
Co. Main Office
4061 Perimeter Dr.
Columbus, OH

Fairfield, ME
Raphine, VA

J.S. Woodhouse
Division Main Office
1314 Union St Exd
West Springfield, MA

Ephrata, PA
Syracuse, NY

MANUFACTURERS & TERRITORIES COVERED

Manufacturer	TERRITORIES COVERED
A&B Equipment	IA, IL, IN, KY, MI, MN, MO, ND, OH, PA, SD, TN, WI, WV
Bomet	CT, DE, IL, IN, KY, MA, MD, ME, MI, MN, NJ, NH, NY, OH, PA, RI, VT, WI, WV
Brown	CT, DE, IN, MA, MD, ME, MI, NJ, NH, NY, OH, PA, RI, N. VA, VT, WV
Cole	CT, DE, MA, MD, ME, NJ, NH, NY, PA, RI, VT, WV
Delta	CT, DE, IN, MA, MD, ME, MI, MN, NC, ND, NJ, NH, NY, OH, PA, RI, SC, TN, VT, WI, WV
Demco	CT, DE, MA, MD, ME, NJ, NH, NY, PA, RI, VA, VT, WV
Electraform	CT, DE, IA, IL, IN, KY, MA, MD, ME, MI, MN, MO, ND, NJ, NH, NY, OH, PA, RI, SD, VT, WI, WV
Ferri	CT, DE, IN, KY, MA, MD, ME, MI, NJ, NH, NY, OH, PA, RI, TN, VA, VT, WV
Fransgard	CT, DE, GA, IL, IN, KY, MA, MD, ME, MI, NJ, NC, NH, NY, OH, PA, RI, SC, TN, VA, VT, WV
Herd	CT, DE, MA, MD, ME, MI, NJ, NH, NY, OH, PA, RI, VT, WV
Kasco	CT, DE, MA, MD, ME, MI, NJ, NH, NY, OH, PA, RI, VT, WV
Maschio	OH, KY, MI, IN, MN, ND, SD
Minos	CT, DE, MA, MD, ME, NJ, NH, NY, PA, RI, VT, WV
Multivator	CT, DE, IA, IL, IN, KY, MA, MD, ME, MI, MN, MO, ND, NJ, NH, NY, OH, PA, RI, SD, VA, VT, WI, WV
Paladin	CT, DE, IA, IL, IN, KY, MA, MD, ME, MI, MN, MO, ND, NJ, NH, NY, OH, PA, RI, SD, VT, WI, WV
SaMASZ	GA, IA, IL, IN, KY, MI, MN, MO, NC, ND, OH, TN, VA, WV, WI
Shaver	CT, DE, IN, KY, MA, MD, ME, MI, NJ, NH, NY, OH, PA, RI, VT, WV
Sitrex	CT, DE, IN, KY, MA, MD, ME, MI, NC, NJ, NH, NY, OH, PA, RI, SC, TN, VT, WV
Sundown	CT, DE, IA, IL, IN, KY, MA, MD, ME, MI, MN, MO, NC, ND, NJ, NH, NY, OH, PA, RI, SC, SD, TN, VA, VT, WI, WV
Worksaver	CT, DE, IN, KY, MA, MD, ME, NJ, NH, NY, OH, PA, RI, TN, VA, VT, WV

*Note: Territories change regularly. The above chart may be out of date.

ABOUT HAYWARD DISTRIBUTING CO.

Hayward is a family-owned 2-step distributor focused on dealers in the outdoor power, small engine, ag, construction, forestry, hearth, snow and ice management, and rental markets. We operate six warehouses across 27 states with a 90 person team, about a third of which are in the field supporting dealers. We make it easy for dealers to do business with us.



Our Industry Experience

Half our team has over a decade of experience, including former dealership owners, farmers, mechanics, and construction pros who have been in your shoes and know how to solve your problems quickly.

Reliable And Established.

Founded in 1947, with our J.S. Woodhouse division dating back to 1843, we've built long-standing relationships with dealers and leading brands like Honda Engines (since 1982) and Bobcat (since 1986).

Fast & Flexible Service.

We strive for 95% fill rates, same-day shipments, next-day delivery in most areas, and multiple ordering options (online, phone, text, fax, EDI, and more).

Dealership Growth Opportunities

With over 90 product lines, we help you expand your offerings. We also generate sales leads and provide field support for events like open houses and trade shows.

Local Presence.

Our 30 field team members regularly travel throughout our coverage area, backed by six warehouse locations with 250,000 sq. ft. of space.

Tillers



FEATURES

- PTO with slip clutch for reliable power transfer
- 6 blades per flange for efficient tilling
- Gear-driven side transmission for durability and consistent performance
- Adjustable lower hitch brackets for a secure fit
- Powder-coated finish for long-lasting protection
- Adjustable side depth skids for precise operation
- Category 1, three-point hitch, quick hitch compatible

SUNDOWN UL TILLER, 15-40 HP

MODELS	WORKING WIDTH	TILLING DEPTH	# OF TINES	HITCH CATEGORY	WEIGHT
UL36	41"	6.5"	24	I	337
UL42	47"	6.5"	30	I	368
UL48	53"	6.5"	36	I	397
UL60	65"	6.5"	42	I	441

SUNDOWN UM TILLER, 35-50 HP

MODELS	WORKING WIDTH	TILLING DEPTH	# OF TINES	HITCH CATEGORY	WEIGHT
UM60	65"	7"	48	I	627
UM72	72"	7"	54	I	683

Tillers



FEATURES

- PTO with slip clutch for reliable power transfer
- 6 blades per flange for effective tilling
- Gear-driven side transmission for durability
- Multi-speed gearbox for versatile operation
- Adjustable lower hitch brackets for a secure fit
- Adjustable side depth skids for precise control
- Powder-coated finish for long-lasting protection
- Category 1 & 2, three-point hitch compatibility

SUNDOWN UH TILLER, 50-65 HP

MODELS	WORKING WIDTH	TILLING DEPTH	# OF TINES	HITCH CATEGORY	WEIGHT
UH60	65"	7.5"	42	I & II	860
UH72	72"	7.5"	48	I & II	926
UH84	84"	7.5"	54	I & II	990

SUNDOWN VH TILLER, 50-85 HP

MODELS	WORKING WIDTH	TILLING DEPTH	# OF TINES	HITCH CATEGORY	WEIGHT
VH-60	60"	9"	36	II	1280
VH-70	70"	9"	42	II	1370
VH-80	80"	9"	48	II	1464
VH-90	89"	9"	54	II	1557

Tillers



FEATURES

- PTO with slip clutch
- 6 blades per flange
- Gear-driven side transmission for durability
- Adjustable lower hitch brackets for a secure fit
- Multi-speed gearbox for versatile operation
- Powder-coated finish for long-lasting protection
- Adjustable side depth skids for precise control
- Category 2 & 3, three-point hitch compatibility

SUNDOWN UHH TILLER, 90-120 HP

MODELS	WORKING WIDTH	TILLING DEPTH	# OF TINES	HITCH CATEGORY	WEIGHT
UHH100	100"	10"	60	II & III	2339
UHH120	120"	10"	72	II & III	2573

Tillers

MASCHIO



FEATURES

- Category I, 3-point hitch, Quick Hitch compatible
- Adjustable skid shoes for depth control
- Slip clutch PTO for driveline protection
- Side chain in oil bath or side gear drive (varies by model)
- 4 or 6 blades per flange for efficient tilling
- Available with reverse tine rotation models for specialized applications

MASCHIO 40 SERIES WEEKEND WARRIOR (15-40 HP)

MODELS	DESCRIPTION	TILLAGE DEPTH	HITCH CATEGORY	WEIGHT
SD4049	49" STANDARD DUTY ROTARY TILLER	7"	I	487
SD4057	57" STANDARD DUTY ROTARY TILLER	7"	I	602
SD4065	65" STANDARD DUTY ROTARY TILLER	7"	I	715

MASCHIO 60 SERIES WEEKEND WARRIOR (18-60HP)

MODELS	DESCRIPTION	TILLAGE DEPTH	HITCH CATEGORY	WEIGHT
HD6049	49" HEAVY DUTY ROTARY TILLER	7"	I	540
HD6049R	49" HEAVY DUTY REVERSE ROTATION ROTARY TILLER	7"	I	556
HD6062	62" HEAVY DUTY ROTARY TILLER	7"	I	672
HD6062R	62" HEAVY DUTY REVERSE ROTATION ROTARY TILLER	7"	I	690
HD6073	73" HEAVY DUTY ROTARY TILLER	7"	I	747
HD6073R	73" HEAVY DUTY REVERSE ROTATION ROTARY TILLER	7"	I	769

Tillers

MASCHIO



FEATURES

- Category I or II, 3-point hitch with adjustable brackets
- Depth skids with a working depth of 7"
- Slip clutch PTO for driveline protection
- #100 roller chain or standard gear drive (varies by model)
- 4 or 6 blades per flange for effective soil cultivation

MASCHIO ROTARY TILLER - MODEL A & MODEL H (35-60 HP)

MODELS	DESCRIPTION	TILLAGE DEPTH	HITCH CATEGORY	WEIGHT
A180	73" WORKING WIDTH ROTARY TILLER	7"	I	689
H205	81" WORKING WIDTH ROTARY TILLER	7"	I & II	817

Tillers

MASCHIO



FEATURES

- Category I / II, 3-point hitch with adjustable brackets
- Depth skids with a working depth of 8"
- Gear side drive with slip clutch PTO for reliable performance
- 4-speed gearbox with rotor speeds of 178, 201, 227, and 256 RPM
- 6 blades per flange for efficient tilling
- CR models equipped with optional 18" cage roller for soil finishing

MASCHIO ROTARY TILLER - MODEL U (35-80 HP)

MODELS	DESCRIPTION	TILLAGE DEPTH	HITCH CATEGORY	WEIGHT
U155	63" WORKING WIDTH ROTARY TILLER	8"	I & II	889
U180	73" WORKING WIDTH ROTARY TILLER	8"	I & II	977
U180CR	73" ROTARY TILLER W / CAGE ROLLER	8"	I & II	1355
U205	83" WORKING WIDTH ROTARY TILLER	8"	I & II	1066
U205CR	83" ROTARY TILLER W / CAGE ROLLER	8"	I & II	1499
U230	93" WORKING WIDTH ROTARY TILLER	8"	I & II	1155
U230CR	93" ROTARY TILLER W / CAGE ROLLER	8"	I & II	1732

Tillers



FEATURES

- Category II, 3-point hitch with adjustable brackets
- Depth skids with a working depth of 8"
- 4-speed gearbox with rotor speeds from 140-266 RPM
- Optional cage roller or packer roller available.

MASCHIO ROTARY TILLER - MODEL B (45-100 HP)

MODELS	DESCRIPTION	TILLAGE DEPTH	HITCH CATEGORY	WEIGHT
B155	63" WORKING WIDTH ROTARY TILLER	8"	II	889
B180	73" WORKING WIDTH ROTARY TILLER	8"	II	977
B205	83" WORKING WIDTH ROTARY TILLER	8"	II	1499
B230	93" WORKING WIDTH ROTARY TILLER	8"	II	1732

MASCHIO ROTARY TILLER - MODEL C (60-130 HP)

MODELS	DESCRIPTION	TILLAGE DEPTH	HITCH CATEGORY	WEIGHT
C205	83" WORKING WIDTH ROTARY TILLER	8"	II	1599
C230	93" WORKING WIDTH ROTARY TILLER	8"	II	1728
C250	103" WORKING WIDTH ROTARY TILLER	8"	II	1841
C300	123" WORKING WIDTH ROTARY TILLER	8"	II	2689

Tillers



FEATURES

- Category II, 3-point hitch with adjustable brackets
- Depth skids with a working depth of 8"
- Gear side drive with slip clutch PTO and 3-speed gearbox
- Rotor speeds: 181, 246, and 300 RPM
- 1000 RPM PTO gearbox for heavy-duty performance
- 6 blades per flange with double flange kit (10mm flanges)
- CR models equipped with optional 18" cage roller (requires completing kit)
- PR models equipped with optional 18" packer roller (requires completing kit)

MASCHIO ROTARY TILLER - MODEL SC (90-175 HP)

MODELS	DESCRIPTION	TILLAGE DEPTH	HITCH CATEGORY	WEIGHT
SC230	93" WORKING WIDTH ROTARY TILLER	8"	II	1999
SC230CR	93" TILLER W / CAGE ROLLER	8"	II	2476
SC230PR	93" TILLER W / PACKER ROLLER	8"	II	2669
SC250	103" WORKING WIDTH ROTARY TILLER	8"	II	2132
SC250CR	103" TILLER W / CAGE ROLLER	8"	II	2678
SC250PR	103" TILLER W / PACKER ROLLER	8"	II	2909
SC300	123" WORKING WIDTH ROTARY TILLER	8"	II	2442
SC300CR	123" TILLER W / CAGE ROLLER	8"	II	3044
SC300PR	123" TILLER W / PACKER ROLLER	8"	II	3326

Tillers

MASCHIO



FEATURES

- Category III, 3-point hitch for heavy-duty applications
- Depth skids with working depth up to 10"
- Hydraulic roller depth adjustment for precision control
- Gear side drive with cam clutch PTO
- 6 blades per flange for effective soil cultivation
- 1,000 RPM gearbox with fan for extra cooling
- Optional 21.5" cage roller or 19.5" packer roller

MASCHIO ROTARY TILLER - MODEL G (180-250 HP)

MODELS	DESCRIPTION	TILLAGE DEPTH	HITCH CATEGORY	WEIGHT
G350	143" WORKING WIDTH ROTARY TILLER	10"	III	3538
G350CR	143" TILLER W / CAGE ROLLER	10"	III	4473
G350PR	143" TILLER W / PACKER ROLLER	10"	III	5247
G420DT	165" WORKING WIDTH ROTARY TILLER	10"	III	3863
G420DTCR	165" TILLER W / CAGE ROLLER	10"	III	4895
G420DTPR	165" TILLER W / PACKER ROLLER	10"	III	5687

Power Harrows - Single Speed



FEATURES

- Category I hitch on 1300–1500 models, Category II hitch on 1800–2000 models
- Slip clutch driveline standard for protection
- 540 PTO gearbox for consistent power
- 2 blades per rotor for clean cutting
- Rear roller with pin adjustments, available with mechanical or hydraulic upgrades
- Rotor speed: 290 RPM
- Side-dampened protection shields for added safety

MASCHIO POWER HARROW - DELFINO DL (30 - 100 HP)

MODELS	DESCRIPTION	TILLAGE DEPTH	TRACTOR HP	HITCH CATEGORY	WEIGHT
DL1300PR	51" POWER HARROW W/ PACKER ROLLER	8"-10"	30-100	I	1234
DL1500PR	59" POWER HARROW W/ PACKER ROLLER	8"-10"	30-100	I	1399
DL1800PR	70" POWER HARROW W/ PACKER ROLLER	8"-10"	30-100	II	1526
DL2000PR	78" POWER HARROW W/ PACKER ROLLER	8"-10"	30-100	II	1694

Power Harrows - Single Speed



FEATURES

- PTO shaft with slip clutch
- 40- 65 HP range
- Cage Roller, Packer Roller or Spike Roller available.
- Mechanical depth control standard, hydraulic available upon request.
- Rear leveling bar with pin or screw adjustment for versatility
- Adjustable side plates for customized operation

SUNDOWN SRPL POWER HARROW

MODELS	WORKING WIDTH	TILLAGE DEPTH	TRACTOR HP	HITCH CATEGORY	WEIGHT
SRPL-75	30"	6"-8"	40-55	II	700
SRPL-100	39"	6"-8"	45-60	II	772
SRPL-125	49"	6"-8"	50-65	II	860
SRPL-150	59"	6"-8"	55-70	II	948
SRPL-175	69"	6"-8"	60-75	II	1036
SRPL-200	79"	6"-8"	65-80	II	1124

Power Harrows - Multi Speed



FEATURES

- PTO shaft with slip clutch
- 80-120 HP range
- Cage Roller, Packer Roller or Spike Roller available.
- Mechanical depth control standard, hydraulic available upon request.
- Universal joint power transmission shaft with shear bolt torque limiter for protection
- Rear leveling bar with pin or screw adjustment for versatility
- Adjustable side plates for customized operation
- Adjustable lower hitching brackets for precise attachment

SUNDOWN M120 POWER HARROW

MODELS	WORKING WIDTH	TILLAGE DEPTH	TRACTOR HP	HITCH CATEGORY	WEIGHT
M120-250	98"	8"-10"	80-120	II & III	1870
M120-300	118"	8"-10"	100-120	II & III	2082

Power Harrows - Multi Speed



FEATURES

- PTO with slip clutch
- Cage Roller, Packer Roller or Spike Roller available
- 45-105 HP range
- Mechanical depth control standard, hydraulic available upon request.
- Rear leveling bar with pin or screw adjustment for versatility
- Swinging brackets for flexible movement
- Adjustable side plates for customized operation
- Adjustable lower hitching bracket for precise attachment

SUNDOWN SRP POWER HARROW

MODELS	WORKING WIDTH	TILLAGE DEPTH	TRACTOR HP	HITCH CATEGORY	WEIGHT
SRP-100	39"	8"-10"	45-60	II	1012
SRP-125	49"	8"-10"	55-70	II	1100
SRP-150	59"	8"-10"	60-75	II	1199
SRP-175	69"	8"-10"	65-80	II	1298
SRP-200	79"	8"-10"	70-85	II	1408
SRP-225	89"	8"-10"	75-90	II	1496
SRP-250	98"	8"-10"	80-95	II	1584
SRP-275	108"	8"-10"	85-100	II	1672
SRP-300	118"	8"-10"	90-105	II	1760

Angle Frame Disc Harrows



FEATURES

- Sealed bearings for durability
- 1" square high carbon steel axles for strength
- Cast iron disc spacers for reliability
- Adjustable axle angle settings for customization
- Category 1 hitch for secure attachment
- Accommodates Category 1 quick hitch for easy hookup

SUNDOWN ANGLE FRAME DISC HARROW

MODELS	WIDTH	TRACTOR HP	HITCH CATEGORY	WEIGHT
16-12GSBC-R	4 - 1/2'	20-30	I	400
16-16GSBC-R	5 - 1/2'	20-30	I	460
18-16GSBC-R	5 - 1/2'	20-30	I	500
16-20GSBC-R	6 - 1/2'	25-40	I	540
18-20GSBC-R	6 - 1/2'	25-40	I	560

Disc Harrows



FEATURES

- Heavy-Duty Design: Welded tube frame for durability.
- Efficient Operation: Easy-lever gang adjustment and trunnion-mounted sealed bearings.
- Robust Components: Forged 1-1/8" gang axles and 7-gauge notched disc blades.
- Front and rear scraper available.

BROWN DISC HARROWS

MODELS	NUMBER OF DISCS	SPACING (FRONT/REAR)	APPR. WIDTH CUT	TRACTOR HP	HITCH CATEGORY	WEIGHT
BDH-600-2020	20	7"/7"	6'4"	30-75	II	1275
BDH-600-2022	20	7"/7"	6'4"	30-75	II	1325
BDH-600-1820	18	9"/7"	6'4"	30-75	II	1250
BDH-600-1822	18	9"/7"	6'4"	30-75	II	1300
BDH-600-1620	16	9"/9"	6'4"	30-75	II	1200
BDH-600-1622	16	9"/9"	6'4"	30-75	II	1265
BDH-750-2420	24	7"/7"	7'6"	40-80	II	1600
BDH-750-2422	24	7"/7"	7'6"	40-80	II	1675
BDH-750-2220	22	9"/7"	7'6"	50-90	II	1500
BDH-750-2222	22	9"/7"	7'6"	50-90	II	1550

Larger models available upon request.

One Bottom Plow



FEATURES

- Easy Setup: Install A-frame, and ready to use.
- Durable Build: Robust frame and vertical beams with welded A-frame assembly.
- Hitch Compatibility: 3-point hitch with replaceable Category 1 lift arm pins.
- Replaceable Parts: Shin, share, and moldboard are replaceable for extended use.

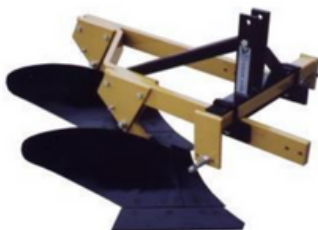
A&B ONE BOTTOM PLOW - COMPACT

MODELS	WIDTH OF CUT	BOTTOM	TRACTOR HP	HITCH CATEGORY	WEIGHT (FULL)
1BP12CT	Adjustable	12"	15-25	I	217

A&B ONE BOTTOM PLOW

MODELS	WIDTH OF CUT	BOTTOM	TRACTOR HP	HITCH CATEGORY	WEIGHT (FULL)
1BP12	Adjustable	12"	15-30	I	256
1BP14	Adjustable	14"	15-30	I	256
1BP16	Adjustable	16"	15-30	I	262

Two Bottom Plow



FEATURES

- Easy Setup: Install A-frame, and ready to use.
- Durable Build: Strong frame and vertical beams with welded A-frame assembly.
- Hitch Compatibility: 3-point hitch with replaceable Category 1 lift arm pins.
- Replaceable Parts: Shin, share, and moldboard for extended use.

A&B TWO BOTTOM PLOW

MODELS	WIDTH OF CUT	BOTTOM	TRACTOR HP	HITCH CATEGORY	WEIGHT (FULL)
2BP12	Adjustable	12"	25-40	I	411
2BP14	Adjustable	14"	25-40	I	411
2BP16	Adjustable	16"	25-40	I	423

Three Bottom Plow



FEATURES

- Easy Setup: Install A-frame, and ready to use.
- Durable Build: Strong frame and vertical beams with welded A-frame assembly.
- Hitch Compatibility: 3-point hitch with replaceable Category 2 lift arm pins.
- Replaceable Parts: Shin, share, and moldboard for extended use.

A&B THREE BOTTOM PLOW

MODELS	WIDTH OF CUT	BOTTOM	TRACTOR HP	HITCH CATEGORY	WEIGHT (FULL)
3BP14	Adjustable	14"	35-50	II	695
3BP16	Adjustable	16"	35-50	II	713

Single Shank Rippers



FEATURES

- 3" x 3" x 3/16" tube frame (Model 100)
- 4" x 6" x 1/4" tube frame (Model 200)
- 4" x 8" x 1/4" tube frame (Model 300)
- 1" x 4" shank, 2-position (15" & 19") (Model 100)
- 1" x 6" x 23" shank (Model 200)
- 1" x 27" parabolic shank (Model 300)
- Shear bolt protection for durability
- Replaceable hard-faced point for extended use

SUNDOWN SINGLE SHANK RIPPERS

MODELS	DESCRIPTION	WEIGHT
100	Cat. 1 single shank ripper, 2-position shank, hard-faced point	80
100	Cat. 1 ripper with Middle Buster, shear bolt, 15" wing, 12" furrower	85
615	12" Furrower w/15" wing, converts 100 to a Middle Buster	10
200	Cat. 1 ripper, 1" x 6" x 23" shank, heat-treated point, parking stands	130
300	Cat. 2 ripper, 1" x 27" shank, heat-treated point, parking stands	240

V-Rippers



FEATURES

- Quick hitch compatible
- Breaks up compacted soil for better water penetration and root growth
- Designed for Category 1 tractors, 30-60 HP
- Available in 50", 60", and 70" tool bar widths
- Equipped with 3 or 5 shanks for flexibility
- 1" x 6" x 23" shanks with shear-bolt protection
- High carbon heat-treated points for durability

SUNDOWN V-RIPPERS

MODELS	# OF SHANKS	HITCH CATEGORY	WEIGHT
R3-50	3	I	420
R3-60	3	I	435
R5-60	5	I	550
R3-70	3	I	450
R5-70	5	I	570

Chain Harrows



FEATURES

- Heavy-Duty Flexible Tines – Available in 7/16", 1/2", and 5/8" diameter steel wire
- Adjustable Tine Positions – Multiple configurations for different applications
- Versatile & Cost-Effective – Ideal for field preparation, pasture maintenance, and more
- Durable Steel Construction – Designed for long-lasting performance
- Wide Range of Sizes – Available in various widths to suit different needs. Tines stand at an aggressive 75° angle.

Flail Mowers



FEATURES

- Recommended for weekend farmers and gardening.
- Compact and light, a perfect choice for sub-compact or compact tractors
- Model FL series comes fitted with hammers and an extra set of knives is included.

SUNDOWN FL FLAIL RABBIT MOWERS

MODELS	WORKING WIDTH	FLAIL KNIVES	HAMMERS	TRACTOR HP	HITCH CATEGORY	WEIGHT
FL-85	32"	28	14	12-18	I	220
FL-95	36"	28	14	16-20	I	253
FL-105	40"	36	18	20-30	I	286
FL-115	44"	40	20	20-30	I	319
FL-125	48"	40	20	25-35	I	352
FL-135	52"	44	22	25-35	I	385
FL-145	56"	48	24	25-35	I	418
FL-165	64"	52	26	30-40	I	517

Flail Mowers



FEATURES

Hydraulic side shift - standard

- Manual side shift - optional
- PTO shaft included / 540 RPM
- rear roller
- Cutting height 1" - 3.5"

Stock Color is Orange

- Powder coated
- Side depth skids
- Three-point hitch Cat. 1 / 2
- Rotor speed 2083 RPM
- Rotor diameter 159 mm / 6.25"

SUNDOWN FM FLAIL MOWERS

MODELS	WORKING WIDTH	FLAIL KNIVES	HAMMERS	TRACTOR HP	HITCH CATEGORY	WEIGHT
FM100	31"	24	12	30-60	I & II	660
FM130	51"	32	16	30-60	I & II	806
FM145	57"	36	18	30-60	I & II	854
FM160	63"	40	20	35-60	I & II	907
FM175	69"	44	22	40-60	I & II	955
FM205	80"	52	26	45-60	I & II	1060
FM220	87"	56	28	50-60	I & II	1113

Flail Mowers



FEATURES

- Suitable for rear and lateral positions for flexible operation
- Tilts 65° downward and 90° upward for transport and angled cutting
- Ideal for cutting along highways, ditches, and embankments
- Cuts grass and shreds small branches
- Hydraulic side shift and tilting for precise positioning
- Series 4 PTO shaft for reliable power transfer
- Side skids for ground protection
- Rotor with hammers and adjustable rear roller
- Requires 2 sets of hydraulic remotes
- Only available with hammers

SUNDOWN FRF FLAIL MOWERS

MODELS	WORKING WIDTH	FLAIL KNIVES	HAMMERS	TRACTOR HP	HITCH CATEGORY	WEIGHT
FRF125	47"	40	20	20-40	I	630
FRF145	55"	64	24	30-45	I	672
FRF165	63"	56	28	40-50	I	703

Flail Mowers



FEATURES

- Suitable for tractors with front and rear linkage and pdf and have been designed for green area specialists
- Tightener pulley with axial floating, guarantees durability of the transmission by limiting the power dissipation in heat

FERRI MKD SERIES FLAIL MOWER

MODELS	WORKING WIDTH	TRACTOR HP	HITCH CATEGORY	WEIGHT
MKD2300A	90"	from 75	II & III	1929
MKD2300B	90"	from 75	II & III	1929
MKD2500A	98"	from 85	II & III	2216
MKD2500B	98"	from 85	II & III	2216
MKD2800A	107"	from 95	II & III	2304
MKD2800B	107"	from 95	II & III	2304

Flail Mowers

FERRI

FEATURES

- Offset/in-line slope mower designed for compact tractors
- Can operate directly behind or offset to the right side of the tractor
- Articulated Y-flail blades deliver a professional cut
- Handles brush up to 1" in diameter
- Flail head adjusts for embankment mowing —can lower below horizontal or raise upward
- Adjustable rear roller for ground contour following
- Adjustable belt-tensioner for optimal performance
- PTO with overrun clutch for driveline protection
- Fits Category 1 hitch, ZME requires dual remotes

FERRI MT SERIES FLAIL MOWER

MODELS	WORKING WIDTH	TRACTOR HP	HITCH CATEGORY	WEIGHT
MT-140	55"	30-45	0-I	705
MT-160	63"	35-50	0-I	794
MT-180	70"	45-60	I & II	926
MT-200	78"	50-70	I & II	1014

FERRI ZME SERIES FLAIL MOWER

MODELS	WORKING WIDTH	TRACTOR HP	HITCH CATEGORY	WEIGHT
ZME-125	49"	20-30	I	511
ZME-155	61"	25-40	I	575

Larger Ferri models available upon request.

Flail Mowers

FERRI

FEATURES

- Offset/in-line slope mowers for agriculture & green areas.
- Can be used directly behind the tractor or offsets to the right-hand side.
- Maximum reach to the right of the tractor
- Gearbox mounted outside transmission for extra reach
- Fits Category 2 three-point hitch
- Requires two sets of remotes for slope and offset control
- Mows directly behind or offset to the right
- Adjustable flail head for slope mowing
- Safe flail design with durable hammer blades
- Easy to mount and remove for flexible tractor use

FERRI ZMTE SERIES FLAIL MOWER

MODELS	WORKING WIDTH	TRACTOR HP	HITCH CATEGORY	WEIGHT
ZMTE PRO 1600	65"	50-80	II	1034
ZMTE PRO 1800	72"	60-80	II	1239
ZMTE PRO 2000	81"	70-80	II	1290

Larger Ferri models available upon request.

Flail Mowers

FERRI

FEATURES

- Compact and versatile offset model
- Ideal for cleaning plot edges, ditch banks, and general green areas
- Compatible with 40–70 HP tractors
- Recommended for grass, bushes, and pruning

FERRI ZMGE SERIES FLAIL MOWER

MODELS	WORKING WIDTH	TRACTOR HP	HITCH CATEGORY	WEIGHT
ZMGE1400A	94"	40-70	I & II	1046
ZMGE1400B	94"	40-70	I & II	1046
ZMGE1600A	110"	40-70	I & II	1080
ZMGE1600B	110"	40-70	I & II	1080

Larger Ferri models available upon request.

Flail Mowers



FEATURES

- Ideal for mulching prunings, branches, and general green waste
- Recommended for maintaining road verges, hedges, and embankments
- Can operate behind the tractor in central or lateral positions
- Compatible with tractors from 60 to 160 HP

FERRI ZLE SERIES FLAIL MOWER

MODELS	WORKING WIDTH	TRACTOR HP	HITCH CATEGORY	WEIGHT
ZLEPRO1800A	79"	60/120	II	1830
ZLEPRO1800B	79"	60/120	II	1830
ZLEPRO2000A	87"	70/120	II	1896
ZLEPRO2000B	87"	70/120	II	1896
ZLEPRO2300A	91"	80/120	II	2000
ZLEPRO2300B	91"	80/120	II	2000

FERRI ZHE SERIES FLAIL MOWER

MODELS	WORKING WIDTH	TRACTOR HP	HITCH CATEGORY	WEIGHT
ZHE2500	89"	100/160	II & III	2992

Flail Mowers



FEATURES

- Category I, 3-point hitch for easy tractor compatibility
- 60° down slope and 90° up slope for versatile cutting angles
- Dual hydraulic function for tilt and offset control
- PTO shaft with shear bolt for driveline protection
- Free-swinging hammer blades for effective mulching
- Rear roller (self-cleaning or leveling) for smooth, consistent finish

MASCHIO WEEKEND WARRIOR OFFSET FLAIL MOWER

MODELS	DESCRIPTION	TRACTOR HP	HITCH CATEGORY	WEIGHT
4047OFM	47" WORKING WIDTH OFFSET FLAIL MOWER	15-40	I	400
4055OFM	55" WORKING WIDTH OFFSET FLAIL MOWER	15-40	I	468
4063OFM	63" WORKING WIDTH OFFSET FLAIL MOWER	15-40	I	504

MASCHIO WEEKEND WARRIOR FIXED FLAIL MOWER

MODELS	DESCRIPTION	TRACTOR HP	HITCH CATEGORY	WEIGHT
4045FFM	45" WORKING WIDTH FLAIL MOWER	10-40	I	400
4053FFM	53" WORKING WIDTH FLAIL MOWER	10-40	I	468
4061FFM	61" WORKING WIDTH FLAIL MOWER	10-40	I	504

Flail Mowers

MASCHIO



FEATURES

- Category I, 3-point hitch, available with manual or optional hydraulic offset
- PTO shaft with overrunning clutch for driveline protection
- Free-swinging hammer blades for effective cutting and mulching
- Optional side wearing skids for added durability and ground protection

MASCHIO FLAIL MOWER - MODEL BARBI

MODELS	DESCRIPTION	TRACTOR HP	HITCH CATEGORY	WEIGHT
BARBI140	56" WORKING WIDTH FLAIL MOWER	30-45	I	664
BARBI160	63" WORKING WIDTH FLAIL MOWER	45-45	I	706
BARBI180	69" WORKING WIDTH FLAIL MOWER	40-45	I	742

MASCHIO FLAIL MOWER - MODEL BRAVA

MODELS	DESCRIPTION	TRACTOR HP	HITCH CATEGORY	WEIGHT
BRAVA160	63" WORKING WIDTH FLAIL MOWER	35-60	I	895
BRAVA180	69" WORKING WIDTH FLAIL MOWER	40-60	I	940
BRAVA200	77" WORKING WIDTH FLAIL MOWER	50-60	I	984

Flail Mowers



FEATURES

- Category II, 3-point hitch with manual offset
- PTO shaft with overrunning clutch for driveline protection
- Free-swinging hammer blades for effective mulching
- Optional hydraulic offset for added convenience and control

MASCHIO FLAIL MOWER - MODEL CORAZZA

MODELS	DESCRIPTION	TRACTOR HP	HITCH CATEGORY	WEIGHT
1905	75" WORKING WIDTH FLAIL MOWER	50-80	II	1221
2105	83" WORKING WIDTH FLAIL MOWER	55-80	II	1299
2305	91" WORKING WIDTH FLAIL MOWER	60-80	II	1377

Flail Mowers



FEATURES

- Flail shaft with double flail spiral (double overlapping)
- Fixed hitch for rear or front mounting
- Ground-following bar with working height adjustment
- Overrunning clutch integrated in gearbox
- Replaceable counter-knives for extended use
- Hardened sliding skids for ground protection
- PTO shaft included
- Automatic tensioning of V-belts for consistent performance
- Protective flaps for added safety
- Adjustable support leg for stable parking

SaMASZ PIKO FLAIL MOWERS

MODELS	WORKING WIDTH	TRACTOR HP	HITCH CATEGORY	WEIGHT
PIKO 100	40"	from 20	I	430
PIKO 100 H	40"	from 20	I	480
PIKO 130	52"	from 30	I	475
PIKO 130 H	52"	from 30	I	530
PIKO 150	59"	from 35	I	510
PIKO 150 H	59"	from 35	I	570

Flail Mowers



FEATURES

- Double spiral flail shaft for efficient cutting
- Front or rear hitch with hydraulic side shift
- Ground-following bar with height adjustment
- Durable high-grade steel with inner mantle
- Gearbox with overrunning clutch
- Replaceable counter-knives and hardened skids
- Auto V-belt tensioning and protective flaps
- PTO shaft included

SaMASZ GRINO FLAIL MOWERS

MODELS	WORKING WIDTH	TRACTOR HP	HITCH CATEGORY	WEIGHT
GRINO 160	63"	from 50	I & II	1185
GRINO 180	71"	from 60	I & II	1300
GRINO 200	79"	from 70	I & II	1390
GRINO 220	86"	from 80	I & II	1460

SaMASZ MAMUT FLAIL MOWERS

MODELS	WORKING WIDTH	TRACTOR HP	HITCH CATEGORY	WEIGHT
MAMUT 250	98"	from 100	II	2245
MAMUT 280	110"	from 120	II	2370
MAMUT 300	118"	from 120	II	2445

Flail Mowers



FEATURES

- Designed for use with front-mounted MAMUT 280 or 300
- Heavy-duty steel body with replaceable inner mantle
- Double-sided design for balanced weight distribution
- Spiral flail shaft with double overlap for intense shredding and self-cleaning
- Hydraulic side shift with stepless width adjustment
- Independent ground following (+/- 20 cm vertical, +/- 5° tilt)
- Hydropneumatic suspension controlled via tractor remotes
- Three hydraulic functions: fold, lift, and side shift
- Automatic cleaning, adjustable working height, and optional external ground bar
- 360° wheels for easy maneuvering
- Replaceable counter-knives, second row optional
- Hardened skids, LED lights, support stands, and KENNFIXX couplers included

SaMASZ MAMUT 860 TWIN FLAIL MOWERS

MODELS	WORKING WIDTH	TRACTOR HP	HITCH CATEGORY	WEIGHT
MAMUT 860 TWIN	315 – 338"	from 230	III	7628

Flail Mowers



FEATURES

- -65° to +90° working range
- Durable high-grade steel body with reinforced housing
- Integrated or overrunning clutch gearbox
- Front protection: poly cover, metal guards, or chains
- Automatic flail cleaning prevents buildup
- Double row bearings for smooth operation

SaMASZ KBR L FLAIL MOWERS

MODELS	WORKING WIDTH	TRACTOR HP	HITCH CATEGORY	WEIGHT
KBR 120 L	47"	from 30	II	895
KBR 140 L	55"	from 35	II	955

SaMASZ KANGU & KBRP 160/200 FLAIL MOWERS

MODELS	WORKING WIDTH	TRACTOR HP	HITCH CATEGORY	WEIGHT
KANGU 140	55"	from 50	II	1305
KANGU 190	63"	from 70	II	1570
KANGU 220	75"	from 85	II	1740
KBRP 160	79"	from 70	II	1790
KBRP 160	86"	from 80	II	1905

SaMASZ KBRP 250 FLAIL MOWERS

MODELS	WORKING WIDTH	TRACTOR HP	HITCH CATEGORY	WEIGHT
KBRP 250	98"	from 120	II & III	2685

Finish Mowers



FEATURES

- 20-50 HP range
- Rear discharge
- 3-point hitch SGM mowers for reliable operation
- Power transmitted via two belts from a pulley to a multiplier gearbox
- Three shafts with suction-type blades for high tip speed and optimal mowing performance
- Four swivel wheels follow ground contours for a precise, level cut even on uneven terrain

SUNDOWN FINISH MOWER

MODELS	WORKING WIDTH	TRACTOR HP	HITCH CATEGORY	WEIGHT
SGM48	48"	20-50	I	447
SGM60	60"	20-50	I	497
SGM72	72"	20-50	I	553
SGM84	84"	20-50	I	660

Finish Mowers



FEATURES

- Suitable for parks, golf courses, athletic fields, highway maintenance and farming.
- Working widths available: 48", 60", 72", 90".
- For tractors from: 12 - 50 HP.
- Designed with heavy duty gearbox and thick gauge deck.

SITREX FINISH MOWERS

MODELS	WORKING WIDTH	BLADES	TRACTOR HP	HITCH CATEGORY	WEIGHT
SM120	48"	3	12-20	I	370
SM150	60"	3	15-30	I	435
SM180	72"	3	20-40	I	500
SM230	90"	5	20-50	I	660

Finish Mowers



FEATURES

- Full floating 3-point hitch for flexible ground following
- 4 solid wheels with spacer height adjustment
- 7-gauge steel deck with integral anti-scalp bumper
- J210 model features free-swinging blades mounted on blade bars

MASCHIO FINISH MOWERS 48" - 72"

MODELS	DESCRIPTION	TRACTOR HP	HITCH CATEGORY	WEIGHT
J120	48" WORKING WIDTH FINISH MOWER	15-50	I	367
J150	60" WORKING WIDTH FINISH MOWER	15-50	I	422
J180	71" WORKING WIDTH FINISH MOWER	15-50	I	500
J210	83" WORKING WIDTH FINISH MOWER	15-50	I	811

Boom Mowers



FEATURES

- Completely self-contained unit for easy integration
- Ideal entry-level model for medium-sized farms and green space maintenance
- Compact and small-sized, perfect for small tractors
- Designed for agricultural use and light green area maintenance
- Suitable for roadside maintenance, municipal use, and continuous operation
- Mounts on a tractor's three-point hitch for quick attachment and removal
- No dedicated mowing tractor required—adds flexibility to your equipment fleet

FERRI T320A SERIES BOOM MOWER

MODELS	MAX HORIZONTAL REACH	MIN TRACTOR WEIGHT	TRACTOR HP	HITCH CATEGORY	WEIGHT
T250A	8' 3"	1543	20-35	I-II	749
T320A	10' 7"	1984	25-40	I-II	816

FERRI TM46 SERIES BOOM MOWER

MODELS	MAX HORIZONTAL REACH	MIN TRACTOR WEIGHT	TRACTOR HP	HITCH CATEGORY	WEIGHT
TM46	15' 3"	4850	50-70	II	1713

Larger Ferri models available upon request.

Boom Mowers

FERRI

FEATURES

- Completely self-contained unit
- Designed for municipal and ground care operations
- Equipped with a high-power hydraulic system featuring cast iron pumps and motors
- Worm high-torque transmission gearbox for reliable performance
- "Plus" console with proportional electro-hydro-electric controls for operator comfort

FERRI TXV SERIES BOOM MOWER

MODELS	MAX HORIZONTAL REACH	MIN TRACTOR WEIGHT	TRACTOR HP	HITCH CATEGORY	WEIGHT
TXV50	17' 2"	7500	80-100	II-III	2756
TXV60	17' 2"	8000	90-110	II-III	2855

Larger Ferri models available upon request.

Boom Mowers



FEATURES

- Cable control (Bowden) standard
- Electric ON/OFF control (E) optional with constant arm speed
- Electro-proportional (EP) control optional for speed-sensitive joystick movement
- Simultaneous three-cylinder control available with EP
- Single-cylinder operation possible with electric (E) control

SaMASZ KOLIBER/KWT/CAMEL BOOM MOWER

MODELS	MAX HORIZONTAL REACH	MIN TRACTOR WEIGHT	TRACTOR HP	HITCH CATEGORY	WEIGHT
KOLIBER 400	13' 1"	5290	from 55	II	1170
KOLIBER 450	14' 9"	6395	from 55	II	1280
KWT 550	18'	8820	from 80	II	2325
KWT 650	21' 4"	11025	from 90	II	2515
CAMEL 900	29' 7"	16535	from 120	II	3020

SaMASZ KWT 651 E/EP BOOM MOWER

MODELS	MAX HORIZONTAL REACH	MIN TRACTOR WEIGHT	TRACTOR HP	HITCH CATEGORY	WEIGHT
KWT 651	21'3"	11025	from 90	II	1320/2910

Rotary Cutters



FEATURES

- 130–145 horsepower gearboxes for powerful, heavy-duty performance
- All-welded 7-gauge (3/16") or 1/4" steel decks with reinforcements for maximum durability
- 3" tubular steel frame with flex link for added strength and flexibility
- 3/16" stump jumper with 1" x 5" blade mounting bar
- Round-back design with rubber front shield or front safety chain curtain for protection

BROWN 400 SERIES ROTARY CUTTERS

MODELS	CUTTING WIDTH	TRACTOR HP	HITCH CATEGORY	WEIGHT
415 Rotary Cutter	60"	30	I	980
416 Rotary Cutter	72"	40	I	1205
417 Rotary Cutter	84"	50	I	1435

BROWN 600 SERIES ROTARY CUTTERS

MODELS	CUTTING WIDTH	TRACTOR HP	HITCH CATEGORY	WEIGHT
672HD Heavy Duty Brush Cutter	72"	60	II	1720
672HD-1 Heavy Duty Brush Cutter	72"	60	II	1720
672HD-D Heavy Duty Brush Cutter	72"	60	II	1820
672HD-D-1 Heavy Duty Brush Cutter	72"	60	II	1820
684 Heavy Duty Brush Cutter	84"	70	II	2240
684-1 Heavy Duty Brush Cutter	84"	70	II	2240

Drum Mowers



FEATURES

- 3-point mounted rotary drum mowers for efficient field cutting
- High-speed working drums ensure high-quality cutting performance
- Ideal for both large and small farming operations
- Available in three widths: 1.35m, 1.65m, and 1.85m
- Optional hydraulic fold for added convenience
- Built with high-quality materials and components for durability
- Stable, solid construction ensures long and trouble-free operation

MINOS DRUM MOWER

MODELS	WORKING WIDTH	TRACTOR HP	HITCH CATEGORY	WEIGHT
T-TCBM-135	53"	25-65	I	660
T-TCBM-165	65"	30-65	I & II	792
T-TCBM-185P	73"	40-65	I & II	902

Sickle Bar Mowers



FEATURES

- Three-point hitch with offset feature for flexible positioning
- 540 PTO
- Mechanical linkage raises cutter bar using the 3-point lift
- Quick-change bolt-on guards for easy maintenance
- Breakaway device built into hitch for added safety
- Adjustable ground skids for precise cutting height
- Includes extra blade and parts bag for convenience

GASPARDO FIORE SICKLE BAR MOWER - MECHANICAL LIFT

MODELS	DESCRIPTION	TRACTOR HP	HITCH CATEGORY	WEIGHT
FIORE175M	175 FIORE 5'8" CUTTING WIDTH	20-50	I	511
FIORE205M	205 FIORE 6'8" CUTTING WIDTH	20-50	I	529

GASPARDO FIORE SICKLE BAR MOWER W / HYDRAULIC LIFT

MODELS	DESCRIPTION	TRACTOR HP	HITCH CATEGORY	WEIGHT
FIORE175H	175 FIORE 5'8" CUTTING WIDTH W/HYDRAULIC LIFT	20-50	I	511
FIORE205H	205 FIORE 6'8" CUTTING WIDTH W/HYDRAULIC LIFT	20-50	I	529
FIORE235H	235 FIORE 7'8" CUTTING WIDTH W/HYDRAULIC LIFT	20-50	I	547

Cultivators - Light Duty

Multivator



FEATURES

- Designed for small to medium tractors
- Drive Chain: 12B (#60HD)
- Optimized for surface tillage in sandy or moderately stony soils
- Ideal for various crops, including lettuce, carrots, onions, potatoes, and more
- Adjustable tillage heads to match crop and soil conditions
- Adjustable row spacing for customized cultivation
- Compact size allows tillage in narrow rows, minimum width of 7.5"
- Working depth: 2-2.5 inches
- Blades: 4 per flange for effective soil cultivation

MULTIVATOR FL-FLA CULTIVATORS

MODELS	GROUND CLEARANCE	HEX BAR SIZE	FRAME WIDTH	HEAD WIDTH	# OF BLADES	TRACTOR HP	HITCH CATEGORY
FL	16"	30 mm	66"	5.5-7"	8	15-50	I
FLA	20"	30 mm	90"	7-10"	8	15-50	I
			132"	12-15"	16		
			158"	16-20"	24		
				20-24"	32		
				28-32"	40		

Cultivators - Medium Duty

Multivator



FEATURES

- Designed for all tractor types, ideal for medium-textured soils over large areas
- Suitable for a wide range of crops, including potatoes, pumpkins, sorghum, sunflowers, and vineyards
- Adjustable tillage heads to match crop and soil conditions
- Adjustable row spacing for flexibility with different crop rows
- Three model variants with varying chaincase heights for increased clearance
- Working depth: 3-4 inches for effective soil cultivation
- Drive Chain: 16B (#80HD)
- Blades: 4 per flange for consistent tillage performance

MULTIVATOR FP-FPA-FPXA CULTIVATORS

MODELS	GROUND CLEARANCE	HEX BAR SIZE	FRAME WIDTH	HEAD WIDTH	# OF BLADES	TRACTOR HP	HITCH CATEGORY
FP	20"	41 mm	66"	9-11"	8	25-125	I & II
FPA	25"	41 mm	90"	12-16"	8	25-125	I & II
FPXA	32"	41 mm	132"	18-22"	16	25-125	
			180"	24-32"	24		
			192"				

Cultivators - Heavy Duty



FEATURES

- Designed for small to medium tractors
- Optimized for surface tillage in sandy or moderately stony soils
- Ideal for various crops, including lettuce, carrots, onions, potatoes, tobacco and more
- Adjustable tillage heads to match crop and soil conditions
- Adjustable row spacing for customized cultivation
- Working depth: 4-6 inches
- Drive Chain: 20B (#100HD)
- Blades: 4 per flange for effective soil cultivation

MULTIVATOR FPSR-FPSRXA CULTIVATORS

MODELS	GROUND CLEARANCE	HEX BAR SIZE	FRAME WIDTH	HEAD WIDTH	# OF BLADES	TRACTOR HP	HITCH CATEGORY
FPSR	20"	50 mm	66"	12-16"	8	70-125	I & II
FPSRXA	32"	50 mm	90"	18-22"	16	70-125	I & II
			132"	24-32"	24		
			180"				
			192"				
			240"				

"C" Tine Cultivators**FEATURES**

- High-quality spring steel "C" tines for durability
- Reversible heat-treated points for extended use
- Adjustable row width for flexibility
- High ground clearance for better performance
- Heavy angle iron frame for strength
- Compatible with Category 1 Quick Hitch for easy hookup

SUNDOWN CVG SERIES "C" TINE CULTIVATOR

MODELS	SHIP WT.	HITCH CATEGORY	SETTINGS
CV-G-1-C	100	I	2

"S" Tine Cultivators**FEATURES**

- Ideal for pastures, orchards, vineyards, and general fieldwork
- Available in 4', 5', 6', 7', 8', and 10' sizes
- Designed for Category 1 tractors
- 2" square, 3-bar reinforced frame for durability
- Equipped with heavy-duty 3/8" x 1-1/4" x 16" clearance S-tines
- Reversible points on 6-1/2" spacing for efficient cultivation
- Optional equipment: 2-5/8" duck foot, 4" and 7" sweeps, and pin-adjustable gauge wheels

SUNDOWN RST SERIES "S" TINE CULTIVATOR

MODELS	WORKING WIDTH	TRACTOR HP	HITCH CATEGORY	WEIGHT
ST4	4'	20-40	I	220
ST5	5'	20-40	I	245
ST6	6'	25-50	I	280
ST7	7'	30-50	I	315
ST8	8'	30-50	I & II	360
ST10	10'	40-50	I & II	440

Arena-Vators



FEATURES

- Cat. 1, 3-pt hitch on 4', 5', 6', and 7' models; Cat. 1 & 2 on 8' model
- Adjustable 12" rear pipe roller for depth control
- 4" diameter adjustable leveling bar for smooth grading
- Two rows of heavy-duty S-tines with reversible points for soil cultivation
- Optional scarifier shanks available

SUNDOWN AV2 SERIES ARENA-VATOR

MODELS	WIDTH	TRACTOR HP	HITCH CATEGORY	WEIGHT
AV3-4	4'	20-40	I	400
AV3-5	5'	20-40	I	480
AV3-6	6'	25-50	I	550
AV3-7	7'	30-50	I	660
AV3-8	8'	40-50	I & II	745

Soil Conditioners



FEATURES

- 3-in-1 soil conditioning machine for versatility
- Heavy-duty 20" high-clearance S-tines penetrate up to 7" deep
- 7" sweeps standard; optional 1-3/8" reversible points available
- Spring-loaded 12" rolling crumblers with serrated bars for mulching
- Tapered frame and crumblers allow smooth travel through vegetation
- 10' to 15' models include gauge wheels for added stability

SUNDOWN 3-IN-1 SOIL CONDITIONERS

MODELS	WORKING WIDTH	TRACTOR HP	HITCH CATEGORY	WEIGHT
SC4	4'	20-40	I	475
SC5	5'	20-40	I	620
SC55	5-1/2'	20-40	I	700
SC6	6'	25-50	I	800
SC7	7'	30-50	I	900
SC8	8'	30-50	II	1000
SC10	10'	40-50	II	1300
SC12	12'	60-100	II	1620
SC13	13'	60-100	II	1700
SC14	14'	70-120	II	1840
SC15	15'	80-120	II	1900

Arena Harrows



FEATURES

- Designed for subcompact tractors and fits Category 1, 3-point hitches
- Ideal for horse arenas and racetracks
- Low-profile harrow rotates in a crisscross pattern for full coverage
- Unique turning action redistributes soil inward for effective leveling
- Available in 4', 5', 6', 7', and 8' diameter models
- Quick hitch compatible
- 4-spoke or heavy-duty 5-spoke rings made of 1.5" round or 2" x 2" tubing
- Replaceable teeth with 5/8" x 7/8" x 8-1/2" bolts or 3/4" x 8" angled teeth for trash clearance

SUNDOWN RHE SERIES ARENA-HARROWS

MODELS	RING DIAMETER	TRACTOR HP	HITCH CATEGORY	WEIGHT (FULL)
RH4E	4'	15-40	I	150
RH5E	5'	15-40	I	170

SUNDOWN RHB SERIES ARENA-HARROWS

MODELS	RING DIAMETER	TRACTOR HP	HITCH CATEGORY	WEIGHT (FULL)
RH5B	5'	15-40	I	210
RH6B	6'	15-40	I	250
RH7B	7'	25-40	I	295
RH8B	8'	25-40	I	335

Disc Bedders



FEATURES

- 14" disc blades for effective soil preparation
- Category 1 quick hitch compatible, 3-point hitch for easy attachment
- Adjustable disc spacing for rows up to 48" wide
- 48" square tube toolbar allows bedder shanks to slide for width adjustments
- Ideal for home gardeners, vegetable growers, and farmers

SUNDOWN DISC BEDDER

MODELS	WORKING WIDTH	HITCH CATEGORY	WEIGHT
DB-YK	up to 48"	I	110

Box Scrapers



FEATURES

- Built rugged for long dirt moving life.
- Cat. I (7/8" pins) Quick Hitch Compatible.
- Formed moldboard for superior strength and performance.
- Reversible 6" cutting edges resulting in greater durability.
- 3-position heat treated steel scarifier shanks are height adjustable.
- Ideal for leveling, finish grading, feedlots, outdoor arenas, back filling at building sites and so much more.

WORKSAVER BOX SCRAPERS

MODELS	WORKING WIDTH	NUMBER OF SCARIFIERS	TRACTOR HP	HITCH CATEGORY	WEIGHT
SBX-4	48"	3	18-25	I	320
SBX-5	60"	4	20-25	I	378
SBX-6	72"	5	25-40	I	428
SBX-7	84"	6	30-40	I	469

Road Grader Blades



FEATURES

- Easy Setup: Pre-assembled, quick hitch compatible.
- Gravel Recycling: Mixes, sifts, and levels smoothly.
- Effective Cutting: Angled dual edges for even flow and pressure.
- Durable Design: Replaceable Cat. 1 lift arm pins.

A&B ROAD GRADER BLADE

MODELS	WIDTH	TRACTOR HP	HITCH CATEGORY	WEIGHT
BGR40	48"	20-40	I	413
BGR50	60"	25-50	I	486
BGR60	72"	30-50	I	520
BGR70	84"	40-50	I	594
BGR80	96"	40-50	I	679
BGR90	108"	40-60	I	764

A&B ROAD GRADER BLADE WITH SHANKS

MODELS	WIDTH	TRACTOR HP	HITCH CATEGORY	WEIGHT
BGR401	48"	20-40	I	444
BGR501	60"	25-50	I	525
BGR601	72"	30-50	I	567
BGR701	84"	40-50	I	649
BGR801	96"	40-60	I	742

Rear Blades



FEATURES

- Available in Economy (MCRB-72), Standard Duty (RB Series), and Heavy Duty (RBHD Series) models to suit everything from light grading to tough field work.
- 3-point hitch compatible, designed for Category I tractors (some models also Quick Hitch compatible)
- Mechanical angle adjustment for blade positioning
- Reversible cutting edge for extended blade life
- Durable main frame construction using square or channel tubing
- Optional skid shoes available for protecting surfaces during snow removal (RB & RBHD)
- Parking stand included for easy storage (RB & RBHD)

WORKSAVER REAR BLADES

MODELS	WORKING WIDTH	TRACTOR HP	HITCH CATEGORY	WEIGHT
MCRB-72	6'	20-35	I	186
RB-1272	6'	20-40	I	190
RB-1284	7'	20-40	I	206
RBHD-6	6'	20-50	I	275
RBHD-7	7'	20-50	I	300
RBHD-6-T	6'	20-50	I	306
RBHD-7-T	7'	20-50	I	331

Power Rakes



FEATURES

- 25 & 40 Series Power Rakes designed for compact tractors
- #80 drive chain for dependable power transfer
- PTO with slip clutch for added protection
- Dual flip-up gauge wheels for stability and control
- Flip-up side shields for easy storage on the machine
- Adjustable material bar for controlling processed material flow

WORKSAVER 25 SERIES POWERED LANDSCAPE RAKES

MODELS	WORKING WIDTH	TRACTOR HP	HITCH CATEGORY	WEIGHT
PTC-525	60"	25-40	I	755
PTC-625	72"	25-40	I	790
PTC-725	84"	25-40	I	825
PTC-525ST	60"	25-40	I	757
PTC-625ST	72"	25-40	I	792
PTC-725ST	84"	25-40	I	827

WORKSAVER 40 SERIES POWERED LANDSCAPE RAKES

MODELS	WORKING WIDTH	TRACTOR HP	HITCH CATEGORY	WEIGHT
PTHD-640	72"	35-75	II	1065
PTHD-740	84"	35-75	II	1160
PTHD-840	96"	35-75	II	1255
PTHD-640ST	72"	35-75	II	1068
PTHD-740ST	84"	35-75	II	1162
PTHD-840ST	96"	35-75	II	1257

Power Rakes



FEATURES

- Available widths: 48", 60", 72", 84", 90" (46" - 81" raking width at full angle)
- Manual and hydraulic angle adjustment (15°)
- Grease-able, triple-sealed, shielded bearings for durability
- Well-designed frame geometry for excellent work surface visibility
- Dual independently adjustable gauge wheels for skim passes or drainage grading
- Hydraulic angling capability allows operator to angle right or left for material control

PALADIN PTO POWER RAKES

MODELS	WORKING WIDTH	TRACTOR HP	HITCH CATEGORY	WEIGHT
TM4	48"	12-80	I	537
TM5	60"	12-80	I	564
TM6	71"	12-80	I	871
TM7	84"	12-80	I & II	1323
TM8	90"	12-80	I & II	1380

Landscape Rakes



FEATURES

- Ideal for grading, leveling, spreading topsoil, removing stones, and maintaining ball diamonds and horse arenas
- 5/16" x 1" x 15" heat-treated spring steel tines for strength and durability
- Tines individually bolted to the tine bar and reinforced with a waffle plate
- Category I, 3-point hitch compatible and quick hitch ready
- Includes parking stand for convenient hook-up
- Shipped with 7/8" pins standard on all models

WORKSAVER MCR LANDSCAPE RAKE

MODELS	WORKING WIDTH	TRACTOR HP	HITCH CATEGORY	WEIGHT
MCR-6	6'	20-40	I	187
MCR-7	7'	20-40	I	199

WORKSAVER LRHD LANDSCAPE RAKE

MODELS	WORKING WIDTH	TRACTOR HP	HITCH CATEGORY	WEIGHT
LRHD-6	6'	20-60	I	279
LRHD-7	7'	20-60	I	305
LRHD-8	8'	20-60	I	331

Roller Compactors



FEATURES

- 16" & 20" diameter roller for versatility
- 1/4" wall pipe thickness for durability
- Available in 60" & 72" with Category 1, 3-point hitch
- Solid continuous length roller axle for strength
- 1-7/16" pillow block bearings for smooth operation

SUNDOWN ROLLER COMPACTORS

MODELS	WIDTH	ROLLER DIAMETER	TRACTOR HP	HITCH CATEGORY	WEIGHT
SC-603PT	60"	16"	20-50	I	860
SC-723PT	72"	20"	20-50	I	1340

Seed Drills



FEATURES

- Versatile seed planting for various seed types, from clover to corn
- Unique metering system ensures accurate calibration for all seed sizes
- Optional Warm Season Grass Box allows planting of fluffy native seeds
- Two seeding options
- Drilling in rows for large grains
- Solid Stand Planting for tighter germination
- Quick switching between seeding styles in minutes

KASCO PLOTTER'S CHOICE SEED DRILL

MODELS	DESCRIPTION	WIDTH	HITCH CATEGORY	WEIGHT
KPCT-48	3-POINT DRILL/ SEEDER – 2.5 bushel capacity	4'	I	660
KPCT-60	3-POINT DRILL/ SEEDER – 3.3 bushel capacity	5'	I	850
KPCT-72	3-POINT DRILL/ SEEDER – 4.4 bushel capacity	6'	I	1325
KPCT-96	3-POINT DRILL/ SEEDER – 7.7 bushel capacity	8'	I	1510

Seed Drills



FEATURES

- Heavy-duty, ag-rated no-till drill for serious land management
- Two rows of disk blades for effective soil penetration
- Kasco's unique Seed Placement Device ensures excellent germination
- Designed for rough terrain with reliable performance

KASCO ECO-DRILL SEED DRILL

MODELS	DESCRIPTION	WIDTH	HITCH CATEGORY	WEIGHT
KED-72	NO-TILL DRILL. 3-POINT. 4.4 BUSHEL CAPACITY	6'	I & II	1600
KED-96	NO-TILL DRILL . 3-POINT. 7.7 BUSHEL CAPACITY	8'	I & II	2060
KED-120	NO-TILL DRILL. 3-POINT. 15 BUSHEL CAPACITY	10'	II	1325

Seed Drills



FEATURES

- Ideal for prepared seedbeds with Kasco's Walking Beam technology for terrain contouring
- Maximum seed-to-soil contact for better germination
- Quick and simple seed rate adjustments—no tools or plates required
- Single seedbox handles most seed varieties
- Even seed distribution across the full working width
- Ground-driven metering system ensures consistent seed flow and stops when the implement stops

KASCO LANDSCAPER'S CHOICE SEED DRILL

MODELS	DESCRIPTION	WIDTH	HITCH CATEGORY	WEIGHT
KLS-48	3-POINT. 2.2 BUSHEL CAPACITY	4'	I & II	1100
KLS-60	3-POINT. 3.3 BUSHEL CAPACITY	5'	I & II	1200
KLS-72	3-POINT. 4.4 BUSHEL CAPACITY	6'	I & II	1300

Seed Drills



FEATURES

- Heavy 3x3 tube welded frame for durability
- 14" heavy-duty openers with oversized bearings
- Spring-loaded openers and cultipackers for better ground contact
- Close-coupled design for easier lifting
- Simple & easy depth control for precise seeding
- Works in both no-till and tilled soil for versatility

KASCO VALU-DRILL SEED DRILL

MODELS	DESCRIPTION	WIDTH	HITCH CATEGORY	WEIGHT
KVD-48	3-POINT. 2.5 BUSHEL CAPACITY	4'	I	525
KVD-72	3-POINT. 4.4 BUSHEL CAPACITY	6'	I	1030
KVD-96	3-POINT. 7.7 BUSHEL CAPACITY	8'	I & II	1375

Seed Drills



FEATURES

- Drill provides better seed placement compared to drop seeders
- Less seed waste and better germination
- Rugged design built for no-till conditions
- All ground-engaging components are rolling – no shanks to drag

KASCO VERSA DRILL SEED DRILL

MODELS	DESCRIPTION	WIDTH	HITCH CATEGORY	WEIGHT
KVGT-489	NO-TILL DRILL, 2.5 BUSHEL CAPACITY	4'	I	700
KVGT-728	NO-TILL DRILL, 4.4 BUSHEL CAPACITY	6'	I	1225

Seed Drills



FEATURES

- Designed for tighter germination, ideal for pastures & waterways
- Low-maintenance, heavy-duty overseeder for solid-stand planting
- Works in both worked & no-till ground for versatility
- Adjustable disc gang allows customized cutting aggression
- Disc blades available in 3" or 4" spacing depending on application
- Seedbox features Kasco's reliable seed metering system
- Presswheel cultipacker drives seed metering & levels seedbed

KASCO VARI-SLICE SEED DRILL

MODELS	DESCRIPTION	WIDTH	HITCH CATEGORY	WEIGHT
KOS-723	NO-TILL DRILL, 3-PT, 4.4 BUSHEL CAPACITY	6'	I	1300
KOS-724	NO-TILL DRILL, 3-PT, 4.4 BUSHEL CAPACITY	6'	I	1300

AVAILABLE IN 5, 6, 8 & 10FT MODELS.

Potato Planters



FEATURES

- During a single cycle, all of the potato planting functions are performed (furrowing, seeding, and ridging the seeded plants with soil).
- Potatoes can be planted at 3 variable distances in a row within
- Planting Depth: 4"- 6"
- Hopper Capacity: 198 lbs.

BOMET GEMINI ONE-ROW PLANTER

MODELS	DESCRIPTION	SEED DISTANCE	TRACTOR HP	HITCH CATEGORY	WEIGHT
S239/2-S	With Steel Wheels	11.5", 12.5", 13"	20	I	286
S239/2-R	With Rubber Tires	12.5"	20	I	286
Optional Rubber Tank Cover for Hopper Bottom, Optional Set of Buckets for Planting Small-Size Potatoes					

Potato Diggers



FEATURES

- Requires 540 PTO
- Rear discharge ploughshare w/ adjustable digging depth transfers potatoes & soil onto the vibrating hopper, sifting potatoes from soil.
- Digging depth adjusted by rear support wheels.
- All vibrating elements moved by crank mechanism driven from the tractor PTO shaft.

BOMET URSA ONE ROW POTATO DIGGER

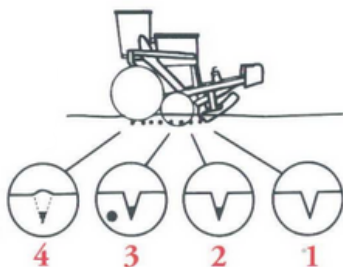
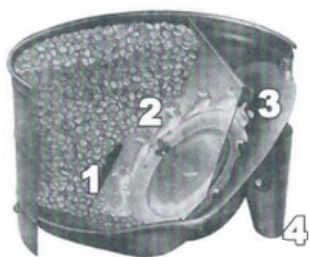
MODELS	SHARE WIDTH	MAX WORKING DEPTH	TRACTOR HP	HITCH CATEGORY	WEIGHT
Z655/1	18"	8"	10	I	297

Planters



COLE 12MX MULTIFLEX PLANTER

- Seeds feed under partition; excess seeds fall back
- Gentle seed drop prevents damage
- Spout delivers metered seeds to Deep Vee opener
- Deep Vee Sword cuts even trench, drawing moisture
- Seeds placed at uniform depth for consistency
- Fertilizer positioned for early root nourishment
- Press wheel firms soil, leaving loose zone for emergence



CONTACT OUR TEAM FOR ADDITIONAL DETAILS.

Aerators



FEATURES

- Can be used on 3-PT or Pull-Type.
- Easy Setup: Pre-assembled with pull-type hitch, quick hitch ready.
- Water Fillable: Fillable with water, includes two drain plugs for quick emptying.
- Convenient Design: Comes with a stand for easy storage.

A&B AERATOR

MODELS	WIDTH	TRACTOR HP	HITCH CATEGORY	WEIGHT (FULL)
AL330	36"	15-25	I	363
AL340	48"	20-30	I	484
AL350	60"	20-40	I	605
AL360	72"	25-50	I	726
AL370	84"	30-60	I	847

A&B AERATOR - PLUGGER

MODELS	WIDTH	TRACTOR HP	HITCH CATEGORY	WEIGHT (FULL)
APL330	36"	15-25	I	388
APL340	48"	20-30	I	517
APL350	60"	20-40	I	646
APL360	72"	25-50	I	775
APL370	84"	30-60	I	905

Debris Blowers



ELECTRAFORM EQUIPMENT



FEATURES

- The Electraform (Harper) Debris Blower is perfect for clearing the way.
- PTO-powered and with fan sizes appropriate for professional or private uses, turf-friendly castors and rollers, and directional discharge changes from the operator's seat, this debris blower is a leading option for those who care about their turf.
- 540 RPM Belt Drive

ELECTRAFORM DEBRIS BLOWER

MODELS	FAN	AIR FLOW	DIMENSIONS	HITCH CATEGORY	WEIGHT
DB2700	27" diameter	4000 CFM	43"L x 48"W x 36"H	I	425
DB3600	36" diameter	7100 CFM	48"L x 64"W x 45"H	I	825

Seeders & Spreaders



FEATURES

- Industry standard since the 1940s.
- Mounts on ATVs, Side-by-Sides, or 3-point hitches.
- Built-in agitators for easy calibration.
- Accurate spreading with minimal waste.

HERD BROADCAST SPREADERS

MODELS	DESCRIPTION	HITCH CATEGORY	WEIGHT
GT-77-ATV	ELECTRIC BROADCASTER, 1.2 BUSHEL CAPACITY	N/A	38
I-258	ELECTRIC BROADCASTER, 2.8 BUSHEL CAPACITY	N/A	86
M-12	PTO BROADCASTER, 2.8 BUSHEL CAPACITY	I	100
750-3PT	PTO BROADCASTER, 9.6 BUSHEL CAPACITY	I	216
1200C	PTO BROADCASTER, 16 BUSHEL	I	291
2440	PTO BROADCASTER, 32 BUSHEL CAPACITY	I & II	525

Spreaders - PL Poly



FEATURES

- Category 1, three-point hitch, 540 RPM PTO
- Corrosion-proof poly hopper for durability
- Stainless steel spreading disc with 4 steel vanes
- Three spread pattern options: full center, left, or right side
- Spreading rates from 20 to 900 lbs. per acre
- Optional spread width limiter for controlled application

SUNDOWN PL SERIES POLY SPREADER

MODELS	SPREADING WIDTH	CAPACITY	HITCH CATEGORY	WEIGHT
PL-180	up to 49'	440	I	119
PL-400	up to 49'	770	I	132
PL-500	up to 49'	990	I	139

Spreaders - Pendulum



FEATURES

- Corrosion-proof hopper (poly for PDC 400, molded plastic for PDV Series)
- Pendulum-style spreading mechanism for even distribution
- Precise spreading rate adjustment for accuracy
- Spreading widths from 27' to 50' with standard spout
- Spreading rates from 20 to 900 lbs. per acre
- Optional spreading spouts for narrow widths or banding

SUNDOWN PENDULUM SPREADER

MODELS	SPREADING WIDTH	CAPACITY	HITCH CATEGORY	WEIGHT
PDC400C	27' - 50'	925	I	221
PDV500	27' - 50'	1155	I	287
PDV600	27' - 50'	1450	I	313
PDHV800	27' - 50'	2000	I	375
PDHV1000	27' - 50'	2650	I	398
PDHV1200	27' - 50'	2800	I	430

Spreaders - Double-Disc



FEATURES

- Squared hopper spreader with dual discs and three adjustable fins
- High-precision professional spreader for wide areas
- Powder-coated frame with stainless steel fins, discs, and dosing plate
- Hydraulic opening for easy operation
- Two-position lower hitch with double pins for secure attachment
- Includes hopper grid, agitator, and PTO shaft with limiter for efficient performance

SUNDOWN DOUBLE DISC SPREADER

MODELS	SPREADING WIDTH	CAPACITY	TRACTOR HP	HITCH CATEGORY
REA1000	40-60'	1655	50	II

Compost Spreaders



FEATURES

- Hydraulic motor-driven rotor for efficient operation
- Category II three-point hitch for secure attachment
- Rubber guard protects against lodged stones
- Hydraulic cylinders control door movement
- Tractor pressure regulates spreading layer thickness for precision

SUNDOWN COMPOST SPREADER

MODELS	WORKING WIDTH	HITCH CATEGORY	WEIGHT
SHCS-15M	59"	II	1250
SHCS-18M	71"	II	1338

Sprayers

DEMCO



DEMCO PRO SERIES SPRAYERS

- Available in 40, 60, 80, 150, 200, & 300 gallon sizes
- Category "1" and "2" - 150 and 200 gallon
- Category "2" and "3" - 300 gallon
- May be used with a "Quick Attach" three point hookup
- Handgun with 15' - 25' of hose (optional)



CONTACT OUR TEAM FOR ADDITIONAL DETAILS.

Post Drivers



FEATURES

- Offset controls let the operator stand safely to the side of the driver.
- Rubber guard shields the operator from impact and any flying debris.
- Safety arm securely positions posts in the driving ram.
- New stabilizer leg provides greater stability during operation.
- Available with manual or hydraulic base plate

SHAVER HD SERIES POST DRIVERS

MODELS	MAX POST WIDTH	HITCH CATEGORY	WEIGHT (WITH HYDRAULIC BASE PLATE)
HD-8	7-1/8"	I & II	486
HD-10	8-1/4"	II & III	714
HD-12	10-7/8"	II & III	957

Post Drivers



FEATURES

- 3-point hydraulic post drivers for wood or steel posts
- HPD-16/22Q Manual Adjust Models feature manual adjustment cranks and bubble level for perfect vertical alignment
- Delivers an airtight post set on flatland or hillsides
- HPD-16/22Q/26Q SHC Hydraulic Adjust Models designed for serious fencing projects
- Center-mounted units for stability and ease of use
- Effortless hydraulic driver alignment with two 3" x 6" hydraulic cylinders

WORKSAVER POST DRIVERS

MODELS	MAX POST WIDTH	HITCH CATEGORY	WEIGHT
HPD-16	5"	I & II	600
HPD-16 SHC	5"	I & II	875
HPD-16 SWO	5"	I & II	1683
HPD-22Q	8.75"	I & II	795
HPD-22Q SHC	8.75"	I & II	1035
HPD-22Q SWO	8.75"	I & II	1878
HPD-26Q SHC	11"	II	1215
HPD-26Q SWO	11"	II	2194

Post Hole Diggers



FEATURES

- Offset controls let the operator stand safely to the side of the driver.
- Rubber guard shields the operator from impact and any flying debris.
- Safety arm securely positions posts in the driving ram.
- New stabilizer leg provides greater stability during operation.

SHAVER POST HOLE DIGGERS

MODELS	STANDARD AUGER LENGTH	STANDARD AUGER DIAMETER	TRACTOR HP	HITCH CATEGORY	WEIGHT
101	32"	4", 6", & 9" semi-double + 4" double flight	15-20	0	125
301H	42"	4", 6", & 9", 12" & 14" semi-double + or double flight	20-40	I & II	170
601H	42"	4", 6", & 9", 12" & 14" semi-double or double flight & 16", 18" & 24"	30-60	I & II	191
901H	42"	4", 6", & 9", 12" & 14" semi-double or double flight & 16", 18" & 24" & 30" double flight	40-80	I & II	244

Post Hole Diggers



FEATURES

- Engineered for deeper, faster, and smarter digging
- PTO-powered diggers for time-saving convenience and reliability
- Shear-bolt protected driveline for added safety
- Rugged gearbox with tapered roller bearings and spring-loaded seals for extended service life
- Large 2" output shaft with two-bolt auger connection for reliable power transfer
- Job-matched augers with fishtail center points and double flighting for quick, efficient digging

WORKSAVER POST HOLE DIGGERS

MODELS	STANDARD AUGER LENGTH	STANDARD AUGER DIAMETER	TRACTOR HP	HITCH CATEGORY	WEIGHT
300	30"	6" - 12"	15-25	0	149
500	42"	6" - 12"	20-40	I & II	160
720	42"	6" - 24"	30-50	I & II	206
925	42"	6" - 30"	40-60	I & II	210

Forestry Winches



FEATURES

- **Durability & Protection:** Safety screen, reinforced drive chain, and stable support leg.
- **Performance:** Optimized clutch, cable spooling, and pulley system.
- **Convenience:** Hooks for chains and ax holder on select models.

FRANSGÅRD FORESTRY WINCHES

MODELS	PULLING CAPACITY (lbs)	TRACTOR HP	HITCH CATEGORY	WEIGHT
V-3021	6600	25-45	I	425
V-3521	7275	25-45	I	448
V-4021	8800	35-65	I & II	657
V-5021	11000	40-70	I & II	697
V-6521	14300	60-110	II & III	1016

Stump Grinders



FEATURES

- SC-25 StumpBuster:
 - For lower HP tractors
 - 24" cutting wheel, 55° cutting arc
 - Grinds 45" stumps into a 10" hole
 - Handles stumps up to 24" high
- SC-50 StumpBuster:
 - For 35–100 HP tractors (3-point hitch)
 - 34" cutting wheel, grinds 12" below ground
 - Single-direction cutting for less wear
 - Built for industrial-strength durability

SHAVER SC SERIES STUMP BUSTERS

MODELS	DRIVE SYSTEM	TRACTOR HP	HITCH CATEGORY	WEIGHT
SC-25	PTO w/ slip clutch	15 - 35	I	832
SC-50	PTO w/ slip clutch	35 - 100	I & II	1181

Stump Grinders



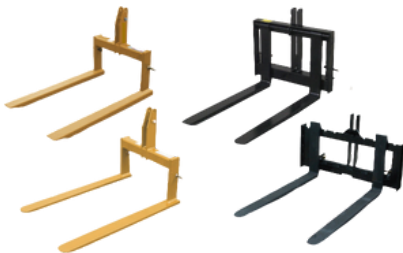
FEATURES

- Unique cutting wheel design for smooth cutting action and increased productivity
- Hydraulic controls for easy operation from the tractor seat
- Durable carbide-tipped cutting teeth – economical & replaceable
- Hardened bushings & grease zerks for extended service life
- SureFoot stabilizer bar ensures stability during operation
- Rubber deflector controls chips and debris
- Parking stand for easy storage
- Requires two pairs of remote hydraulic outlets
- Pressure relief valve for smooth cutting feed rate

WORKSAVER SmoothCut™ STUMP GRINDERS

MODELS	DRIVE SYSTEM	TRACTOR HP	HITCH CATEGORY	WEIGHT
SG-26A	PTO w/ slip clutch	22-50	I	660
SG-36A	PTO w/ slip clutch	45-100	I & II	880

3-Point Forks



FEATURES

- 3-Point Series Forks designed for moving pallets and bins
- 41" non-adjustable tines
- Capacities: 1200 lbs., 1500 lbs., and 2000 lbs.
- Quick hitch compatible with Category 1 & 2, 3-point hitch
- Adjustable tines from 10" to 36" center to center
- 3750 lb. capacity forks available in 42" and 48" lengths

SUNDOWN 3-POINT SERIES FORKS

MODELS	LIFT CAPACITY	FORK LENGTH	HITCH CATEGORY	WEIGHT
1200	1200 lbs.	41"	I	115
1500	1500 lbs.	41"	I	160
2000	2000 lbs.	41"	I	180
1500-A	1500 lbs.	41"	I & II	300
3542	3750 lbs.	42"	I & II	300
3548	3750 lbs.	48"	I & II	315

Cement Mixers



FEATURES

- Versatile machine for concrete, fodder mixing, and vegetable washing
- 3mm steel sheet mixer cone with bolted, interchangeable parts
- Compact design reduces workspace usage
- Frame designed for attachment to any tractor
- Chain drive system with 10:1 reduction ratio, protected by a steel carter for easy maintenance
- Large hopper opening for easy loading and unloading
- Durable painting process includes degreasing, phosphate treatment, and hydrosoluble primer for rust prevention
- Robotic varnish system ensures long-lasting protection against atmospheric agents

SUNDOWN CEMENT MIXER

MODELS	CAPACITY	PTO	HITCH CATEGORY	WEIGHT
80-320 Mixer	71 gal.	1, 3/8"	I	220

Carry-Alls & Boom Poles



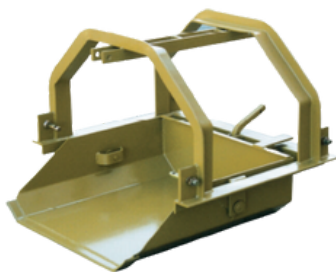
FEATURES

- Carry-All Features:
 - Pre-punched holes for platform mounting
 - Fits any Category 1, 3-point hitch
 - Heavy-duty angle iron construction
 - Accommodates Category 1 Quick Hitch
- Boom Pole Features:
 - Schedule 40 tubing for durability
 - Reinforcement bar for added strength
 - Handy lifting loop for easy handling
 - Welded lift pins for secure attachment
 - Accommodates Category 1 Quick Hitch

SUNDOWN CARRY-ALL & BOOM POLE

MODELS	SHIP WEIGHT	HITCH CATEGORY	WEIGHT CAPACITY
CA-G-C	65	I	1000
BP-G-C	60	I	500

Reversible Scoops



FEATURES

- Versatile scoop for digging, carrying, dumping, and spreading
- Reversible mounting allows front or rear tractor attachment
- Works as a scraper or shovel for multiple uses
- Self-closing scoop pan with beveled cutting edge
- Trip lever for easy dumping without leaving the tractor seat
- Heavy-duty angle iron frame for long-lasting durability

SUNDOWN REVERSIBLE SCOOPS

MODELS	WIDTH	CAPACITY	HITCH CATEGORY	WEIGHT
DS-24-C	24"	6 cu. ft.	I	250
DS-30-C	30"	9 cu. ft.	I	272

3-Point Rotary Brooms



FEATURES

- Designed for use by contractors, municipalities, institutions, large property owners, and farmers.
- 32 inch diameter convoluted brushes available in Poly (P) or both Poly and Wire (PW).
- All models available in 5-ft., 6-ft. and 7-ft. widths.

WORKSAVER 3-POINT ROTARY BROOMS

MODELS	SWEEPING WIDTH	HITCH CATEGORY	WEIGHT
RMB-325P	60"	I	640
RMB-325PW	60"	I	637
RMB-326P	72"	I	740
RMB-326PW	72"	I	736
RMB-327P	84"	I	840
RMB-327PW	84"	I	833

Outdoor Power Equipment, Farm, Forestry, Landscape, Construction, Rental, Small Engine, Hearth & Grills



Proud Member Of OPEESA & EMDA



Contact Information

Hayward Distributing Co. 800-282-1585
Ag & Construction 888-222-8455
J.S. Woodhouse Division 413-736-5462

sales@haydist.com
haydist.com

Locations

Hayward Distributing
Co. Main Office
4061 Perimeter Dr.
Columbus, OH

Fairfield, ME
Raphine, VA

J.S. Woodhouse
Division Main Office
1314 Union St Exd
West Springfield, MA

Ephrata, PA
Syracuse, NY