



## *ELHO Bale Shredder*



*Rotor Cutter 1500 ja 1800*

### *The right decision*

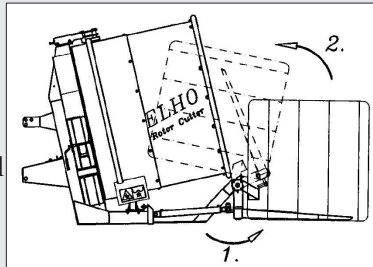
- for chopping silage bales
- for the distribution of straw bales
- for high utilisation of forage feeds



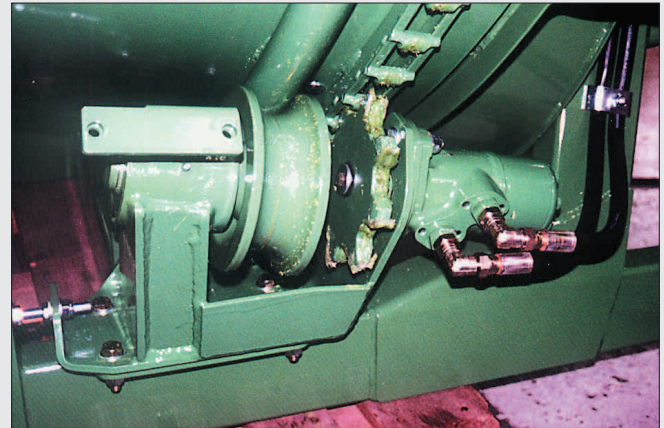


*Rotor Cutter 1800*

The heavy sprocket drive between the hydraulic motor and the drum, together with the solid guide rollers ensure the even rotation of the drum, and so also the even distribution of the chopped bales. The rotation speed of the drum, and therefore also the distribution rate, can be hydraulically adjusted. For tractors, where it is required, an optional flow regulator can be supplied.



**The ELHO Round Bale Shredder** is designed particularly for chopping silage bales but can also chop grass, straw and hay bales. The machine has a PTO driven chopper rotor. The hydraulically driven inclined drum ensures the rotation of the bale during the cutting operation. The smooth shape of the outlets results in an optimal distribution of the material.



Loading the bales is simple with the optional loading device. This loading system (ELHO pat. pend.) operates in two stages:

1. The loading arms grip the standing bale from each side.
2. Then the arms swing the bale into the chopper (see figure opposite)

This loading system is particularly well suited for silage bales, as it minimises the possibility of soil and dirt entering the chopper with the bale.

The machine rests on the ground during the loading operation.



**Team**  
**ELHO**  
**feeding**

Technical Specifications	RC 1500	RC 1800	Optional equipment
Total length	2,5 m	2,5 m	- hydraulic loading grab with support frame
Width	2,4 m	2,6 m	- additional cylinder for loading grab – for bales >800 kg
Weight (empty) ~	800 kg	850 kg	- wheel- and drawbar kit
Weight with loading arm ~	1050 kg	1100 kg	- oil flow regulator
Recommended max. bale size	Ø 1,4 m	Ø 1,7 m	- cable remote control for outlet flaps
Max. bale weight (standard)	800 kg	1000 kg	- hydraulic remote control for outlet flaps
(two cylinders)	1000 kg	-	- higher outblow tower (1m)
PTO speed	540/1000 rpm	-	- rubber extension for chute flap
			- PTO shaft with friction clutch/freewheel

Technical specifications etc. can be changed due to continuous development of the product.  
For available equipment, please check the valid price list.



**FIN-68910 BENNÄS**  
Tel. +358 6 729 0040 Fax +358 6 729 0488  
E-mail: elho@elho.fi www.elho.fi