

**BETONIERA  
CONCRETE MIXER  
UNIVERSALMISCHER  
BETONNIERE  
MEZCLADOR UNIVERSAL**



**RICAMBI  
SPARE-PARTS  
RECHANGES  
ERSATZTEILLISTE  
REPUESTOS**





**USATE SEMPRE RICAMBI ORIGINALI  
ALWAYS USE ORIGINAL SPARE PARTS  
EMPLOYEZ TOUJOURS LES PIECES DE RECHANGE ORIGINALES  
IMMER DIE ORIGINAL-ERSATZTEILE VERWENDEN  
UTILIZAR SIEMPRE REPUESTOS ORIGINALES**

**O.M.B.**

**ITALIANO**

**ENGLISH**

**DEUTSCH**

**FRANÇAIS**

**ESPAÑOL**

**PARTI DI RICAMBIO**

Gli ordini delle parti di ricambio vanno fatti presso i nostri concessionari di zona e devono essere sempre corredati dalle seguenti indicazioni:

- **Tipo, modello e numero di matricola dell'attrezzatura.** Tali dati sono stampigliati nell'apposita targhetta di cui è dotata ogni attrezzatura.
- **Numero di codice della parte richiesta** rilevabile dal catalogo ricambi
- **Descrizione del particolare e quantità richiesta.**

**NOTA: Il termine (Dx) Destro o (Sx) Sinistro** della macchina o di parti di essa, è inteso secondo il senso di marcia.

**SPARE PARTS**

Orders must be transmitted through our area dealers and should always include the following indications:

- **Type, model and serial number of the machine.** These data are punched on the data plate which every implement is equipped with.
- **Code number of the required spare part.** This will be found in the spare parts catalogue.
- **Description of the part and required quantity.**

**Note:** The symbols **(Dx) right** and **(Sx) left**, concerning the machine or single parts of it, are referred, as in the figure, to a rear view of them according to the direction of travel.

**ERSATZTEILE**

Die Bestellungen müssen bei unseren Gebietshändler aufgegeben werden. Bei der Bestellung sind stets die folgenden Angaben zu machen:

- **Typ, Modell und Serien-Nummer des Geräts.** Diese Daten stehen auf dem Typenschild, mit dem jedes Gerät versehen ist.
- **Artikel Nr. der erforderlichen Ersatzteile.** Diese stehen im Ersatzteil-Katalog.
- **Beschreibung des Ersatzteils und die erforderliche Stückzahl.**

**N.B.:** Die Merkzeichen **(Dx) rechts** und **(Sx) links** betreffen eine rückwärtige Aussicht der Maschine oder Teile von ihr (siehe Bild).

**PIECES DÉTACHÉES**

Les ordres doivent être effectués auprès de nos concessionaires de zone en précisant les indications suivantes:

- **Type, modèle et numéro de série de la machine.** Ces données sont gravées sur la plaque d'identification de chaque outil.
- **Numéro de code de la pièce détachée** indiqué sur le catalogue des pièces détachées.
- **Description de la pièce et quantité requise.**

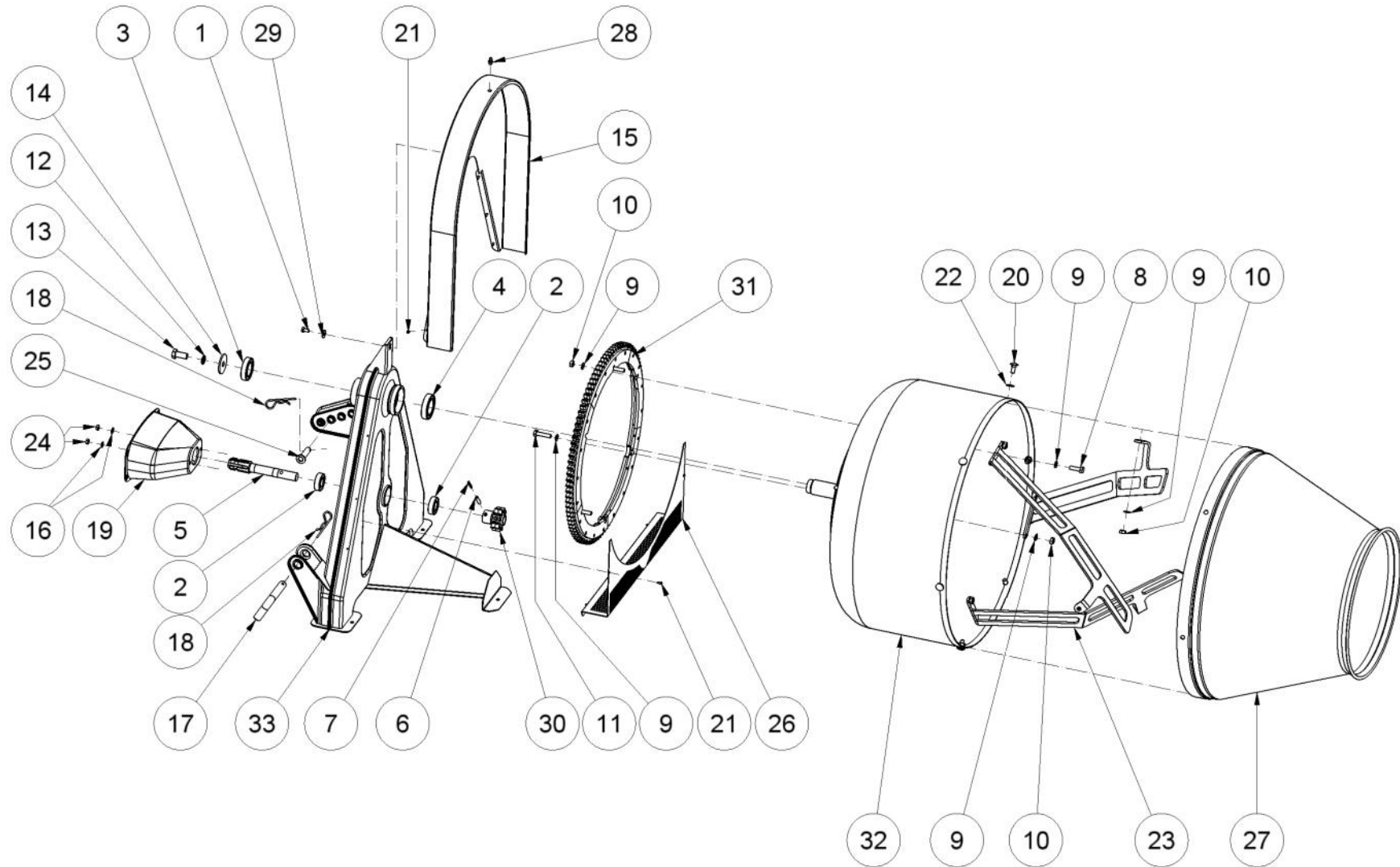
**N.B.:** Les références **(Dx) droit** et **(Sx) gauche** de la machine ou des parties de la même, est entendue, comme de la figure, en regardant la machine de derrière dans le sens de marche.

**REPUESTOS**

Los pedidos han de efectuarse en nuestros concesionarios de zona y deben incluir siempre las siguientes indicaciones:

- **Tipo, modelo y número de matrícula del equipo.** Dichos datos están impresos en la relativa placa presente en el equipo.
- **Número de código de la parte requerida** presente en el catálogo respuestos.
- **Descripción de la pieza y cantidad requerida.**

**N.B.:** La referencia **(Dx) derecha** o **(Sx) izquierda** de la máquina o de sus componentes, se entiende, como en la figura, mirando la máquina por la parte trasera, según la dirección del recorrido.



**T400**  
Azionata da albero cardano  
P.T.O. driven

## Elenco ricambi - Spare parts list

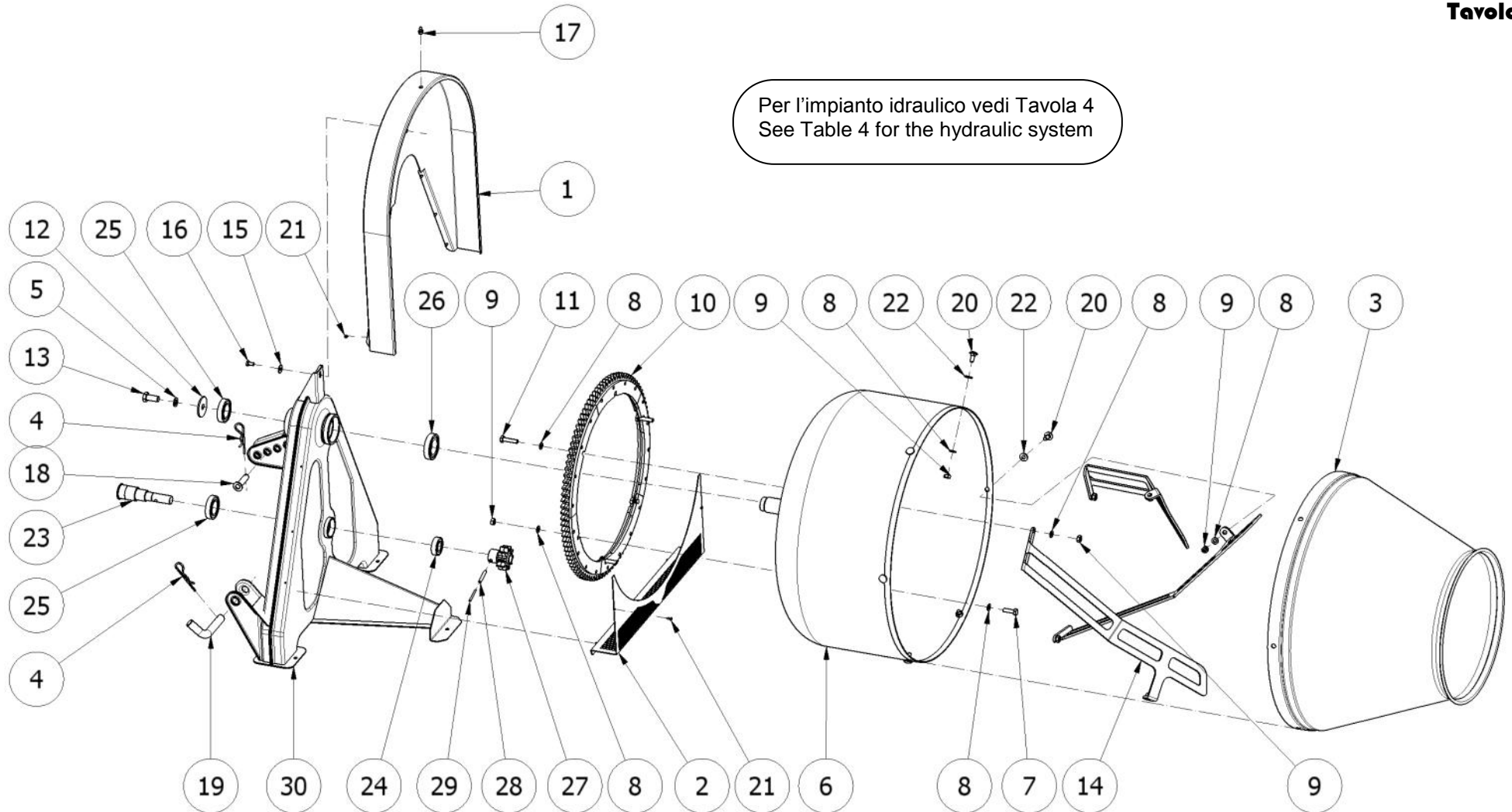
Tavola I

| Elemento | Codice   | Descrizione                              | Description                              | Qtà |
|----------|----------|------------------------------------------|------------------------------------------|-----|
| 1        | V003.014 | VITE TE 8 X 16 INOX UNI 5739 DIN933      | ST.STEEL HEXAGON HEAD SCREW 8X16 UNI5739 | 1   |
| 2        | C012.001 | CUSCINETTO 6205 2RS                      | BEARING 6205 2RS                         | 2   |
| 3        | C012.019 | CUSCINETTO 6008-2RS                      | BEARING 6008-2RS                         | 1   |
| 4        | C012.020 | CUSCINETTO 6009-2RS                      | BEARING 6009-2RS                         | 1   |
| 5        | A005.035 | ALBERO MOTORE T 400                      | DRIVE SHAFT T 400                        | 1   |
| 6        | S006.001 | SPINA ELASTICA 8 X 45 UNI 6873           | SPRING PIN 8 X 45 UNI 6873               | 1   |
| 7        | S006.006 | SPINA ELASTICA 5 X 45 UNI 6873           | SPRING PIN 5 X 45 UNI 6873               | 1   |
| 8        | V003.268 | VITE TE 10 X 35 INOX UNI 5737 DIN 931    | ST.STEEL HEX.HEAD SCREW 10 X 35 UNI 5737 | 3   |
| 9        | R005.013 | RONDELLA PIANA DM10 INOX UNI6592 DIN125A | ST. STEEL FLAT WASHER DM10 UNI6592       | 21  |
| 10       | D001.005 | DADO E M 10 INOX UNI 5588                | ST. STEEL HEXAGON NUT M 10 UNI 5588      | 15  |
| 11       | V003.056 | VITE TE 10 X 40 INOX                     | STAINLESS STEEL HEXAGON HEAD SCREW 10X40 | 3   |
| 12       | R004.006 | RONDELLA GROWER DM.16                    | GROWER WASHER DM.16                      | 1   |
| 13       | V003.037 | VITE TE 16 X 35 SX                       | HEXAGON HEAD SCREW 16X35 LEFT            | 1   |
| 14       | R005.025 | RONDELLA PIANA DM 60 X 16,5 X 4          | FLAT WASHER DM 60 X 16,5 X 4             | 1   |
| 15       | C006.016 | CARTER T-400 CARPENTERIA                 | CARTER T 400                             | 1   |
| 16       | R005.017 | RONDELLA PIANA DM 8 INOX UNI6592 DIN125A | ST.STEEL FLAT WASHER DM 8 UNI 6592       | 2   |
| 17       | P004.026 | PERNO DM 22X100 SOLL. BETONIERE          | LIFTING PIN DM 22X100                    | 2   |
| 18       | C019.005 | COPPIGLIA SAGOMATA DM. 4 X 76 INOX       | ST. STEEL BENT COTTER PIN DM 4X76        | 3   |
| 19       | P012.026 | PROTEZ.LATO MACCHINA ALBERO PTO          | P.T.O. LINK PROTECTION                   | 1   |
| 20       | V003.171 | VITE TB 10 X 25 INOX DIN 603             | ST.STEEL CUP SQUARE SCREW 10X25 DIN 603  | 6   |
| 21       | V003.194 | VITE A2 TB 4,8X13 UNI 6954 AB            | ROUND HEAD SCREW A2 4,8X13 UNI 6954 AB   | 10  |
| 22       | R005.086 | RONDELLA NYLON 12 X 24 X 2               | NYLON WASHER 12 X 24 X 2                 | 6   |
| 23       | P001.029 | PALETTA FERRO BETONIERA T-400            | MIXER IRON BLADE T 400                   | 3   |
| 24       | D001.006 | DADO E M 8 INOX UNI 5588                 | STAINLESS STEEL HEXAGON NUT M8 UNI 5588  | 2   |
| 25       | P004.003 | PERNO DT 16 X 62.5 PER AGITATORE         | PIN DT 16 X 61 FOR AGITATOR              | 1   |
| 26       | C006.195 | CARTER INFERIORE T400                    | LOWER CARTER T 400                       | 1   |
| 27       | C016.012 | CONO T 400                               | T400 OUTER SECTION OF DRUM               | 1   |
| 28       | I002.001 | INGRASSATORE M 10 X 1,5 DRITTO UNI 7663A | GREASE NIPPLE M 10 X 1,5 UNI 7663A       | 1   |
| 29       | R005.080 | RONDELLA PIANA DM 8X24 INOX UNI 6593     | STAINLESS STEEL FLAT WASHER 8X24 UNI6593 | 1   |
| 30       | R009.010 | RUOTA DENT.(PIGNONE) T-400 2005          | T400 PINION GEAR (2005)                  | 1   |
| 31       | R009.009 | RUOTA DENT.(CORONA) T-400 2005           | RING GEAR T400 2005                      | 1   |
| 32       | F006.001 | FONDO COMPL T400 IMBUTITO FORATO         | COMPL.STAMPED-DRILLED INNER SECT.OF DRUM | 1   |
| 33       | T003.024 | TELAIO BETONIERA                         | MIXER FRAME T400                         | 1   |



**T400**  
Azionata da albero cardano  
P.T.O. driven

Per l'impianto idraulico vedi Tavola 4  
See Table 4 for the hydraulic system



 **T400**  
Azionata da motore idraulico  
Hydraulically driven

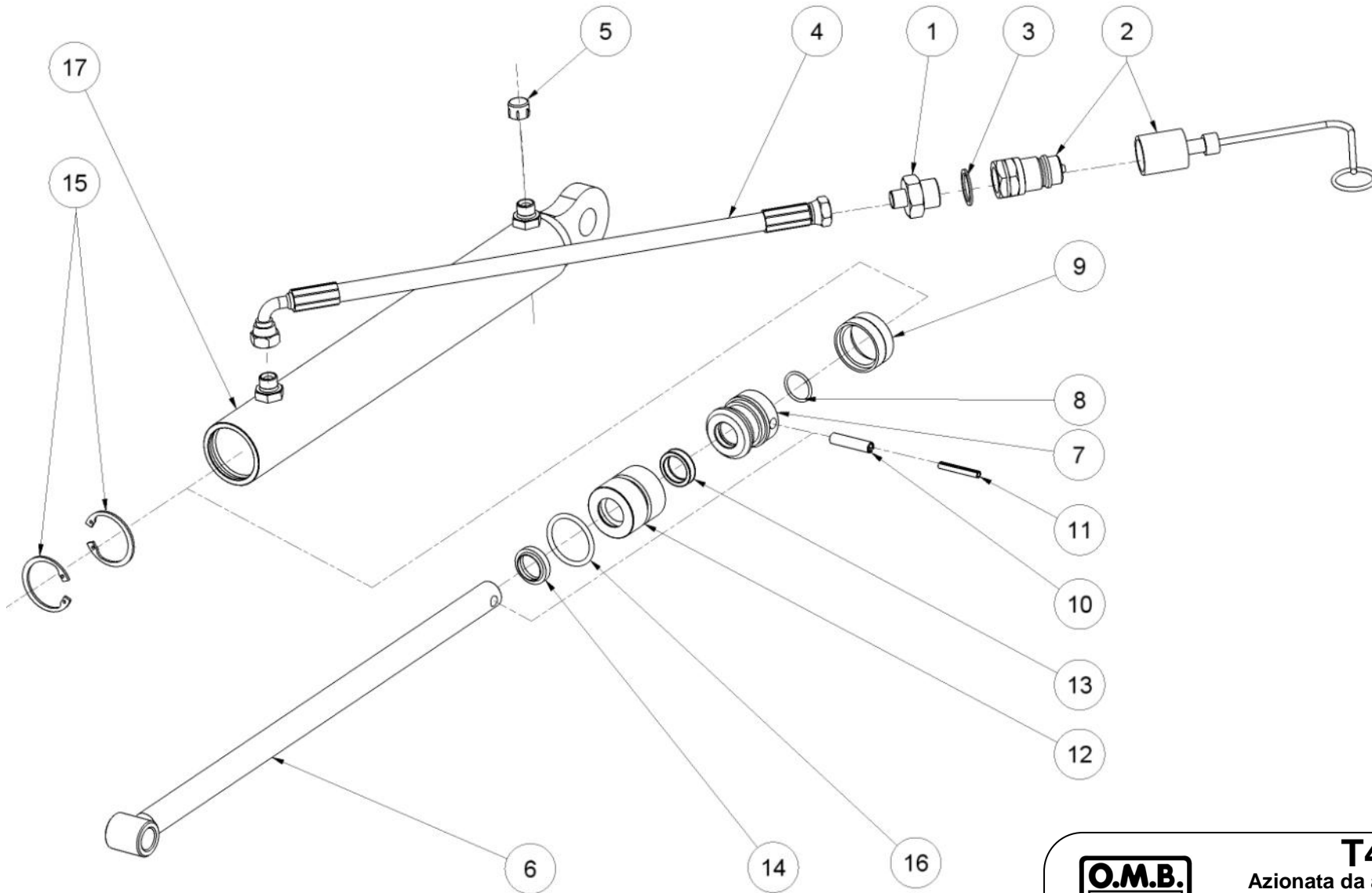
# Elenco ricambi - Spare parts list

Tavola 2

| Elemento | Codice   | Descrizione                              | Description                              | Qtà |
|----------|----------|------------------------------------------|------------------------------------------|-----|
| 1        | C006.016 | CARTER T-400 CARPENTERIA                 | CARTER T 400                             | 1   |
| 2        | C006.195 | CARTER INFERIORE T400                    | LOWER CARTER T 400                       | 1   |
| 3        | C016.012 | CONO T 400                               | T400 OUTER SECTION OF DRUM               | 1   |
| 4        | C019.005 | COPPIGLIA SAGOMATA DM. 4 X 76 INOX       | ST. STEEL BENT COTTER PIN DM 4X76        | 3   |
| 5        | R004.006 | RONDELLA GROWER DM.16                    | GROWER WASHER DM.16                      | 1   |
| 6        | F006.001 | FONDO COMPL T400 IMBUTITO FORATO         | COMPL.STAMPED-DRILLED INNER SECT.OF DRUM | 1   |
| 7        | V003.268 | VITE TE 10 X 35 INOX UNI 5737 DIN 931    | ST.STEEL HEX.HEAD SCREW 10 X 35 UNI 5737 | 3   |
| 8        | R005.013 | RONDELLA PIANA DM10 INOX UNI6592 DIN125A | ST. STEEL FLAT WASHER DM10 UNI6592       | 21  |
| 9        | D001.005 | DADO E M 10 INOX UNI 5588                | ST. STEEL HEXAGON NUT M 10 UNI 5588      | 15  |
| 10       | R009.009 | RUOTA DENT.(CORONA) T-400 2005           | RING GEAR T400 2005                      | 1   |
| 11       | V003.056 | VITE TE 10 X 40 INOX                     | STAINLESS STEEL HEXAGON HEAD SCREW 10X40 | 3   |
| 12       | R005.025 | RONDELLA PIANA DM 60 X 16,5 X 4          | FLAT WASHER DM 60 X 16,5 X 4             | 1   |
| 13       | V003.037 | VITE TE 16 X 35 SX                       | HEXAGON HEAD SCREW 16X35 LEFT            | 1   |
| 14       | P001.029 | PALETTA FERRO BETONIERA T-400            | MIXER IRON BLADE T 400                   | 3   |
| 15       | R005.080 | RONDELLA PIANA DM 8X24 INOX UNI 6593     | STAINLESS STEEL FLAT WASHER 8X24 UNI6593 | 1   |
| 16       | V003.014 | VITE TE 8 X 16 INOX UNI 5739 DIN933      | ST.STEEL HEXAGON HEAD SCREW 8X16 UNI5739 | 1   |
| 17       | I002.001 | INGRASSATORE M 10 X 1,5 DRITTO UNI 7663A | GREASE NIPPLE M 10 X 1,5 UNI 7663A       | 1   |
| 18       | P004.003 | PERNO DT 16 X 62.5 PER AGITATORE         | PIN DT 16 X 61 FOR AGITATOR              | 1   |
| 19       | P004.026 | PERNO DM 22X100 SOLL. BETONIERE          | LIFTING PIN DM 22X100                    | 2   |
| 20       | V003.171 | VITE TB 10 X 25 INOX DIN 603             | ST.STEEL CUP SQUARE SCREW 10X25 DIN 603  | 6   |
| 21       | V003.194 | VITE A2 TB 4,8X13 UNI 6954 AB            | ROUND HEAD SCREW A2 4,8X13 UNI 6954 AB   | 10  |
| 22       | R005.086 | RONDELLA NYLON 12 X 24 X 2               | NYLON WASHER 12 X 24 X 2                 | 6   |
| 23       | A005.223 | ALBERO MOTORE COMPL BETON IDRAULICA      | HYDRAULIC MIXER COMPLETE DRIVE SHAFT     | 1   |
| 24       | C012.001 | CUSCINETTO 6205 2RS                      | BEARING 6205 2RS                         | 1   |
| 25       | C012.019 | CUSCINETTO 6008-2RS                      | BEARING 6008-2RS                         | 2   |
| 26       | C012.020 | CUSCINETTO 6009-2RS                      | BEARING 6009-2RS                         | 1   |
| 27       | R009.010 | RUOTA DENT.(PIGNONE) T-400 2005          | T400 PINION GEAR (2005)                  | 1   |
| 28       | S006.001 | SPINA ELASTICA 8 X 45 UNI 6873           | SPRING PIN 8 X 45 UNI 6873               | 1   |
| 29       | S006.006 | SPINA ELASTICA 5 X 45 UNI 6873           | SPRING PIN 5 X 45 UNI 6873               | 1   |
| 30       | T003.222 | TELAIO BETONIERA IDRAULICA               | HYDRAULIC MIXER FRAME                    | 1   |



**T400**  
Azionata da motore idraulico  
Hydraulically driven



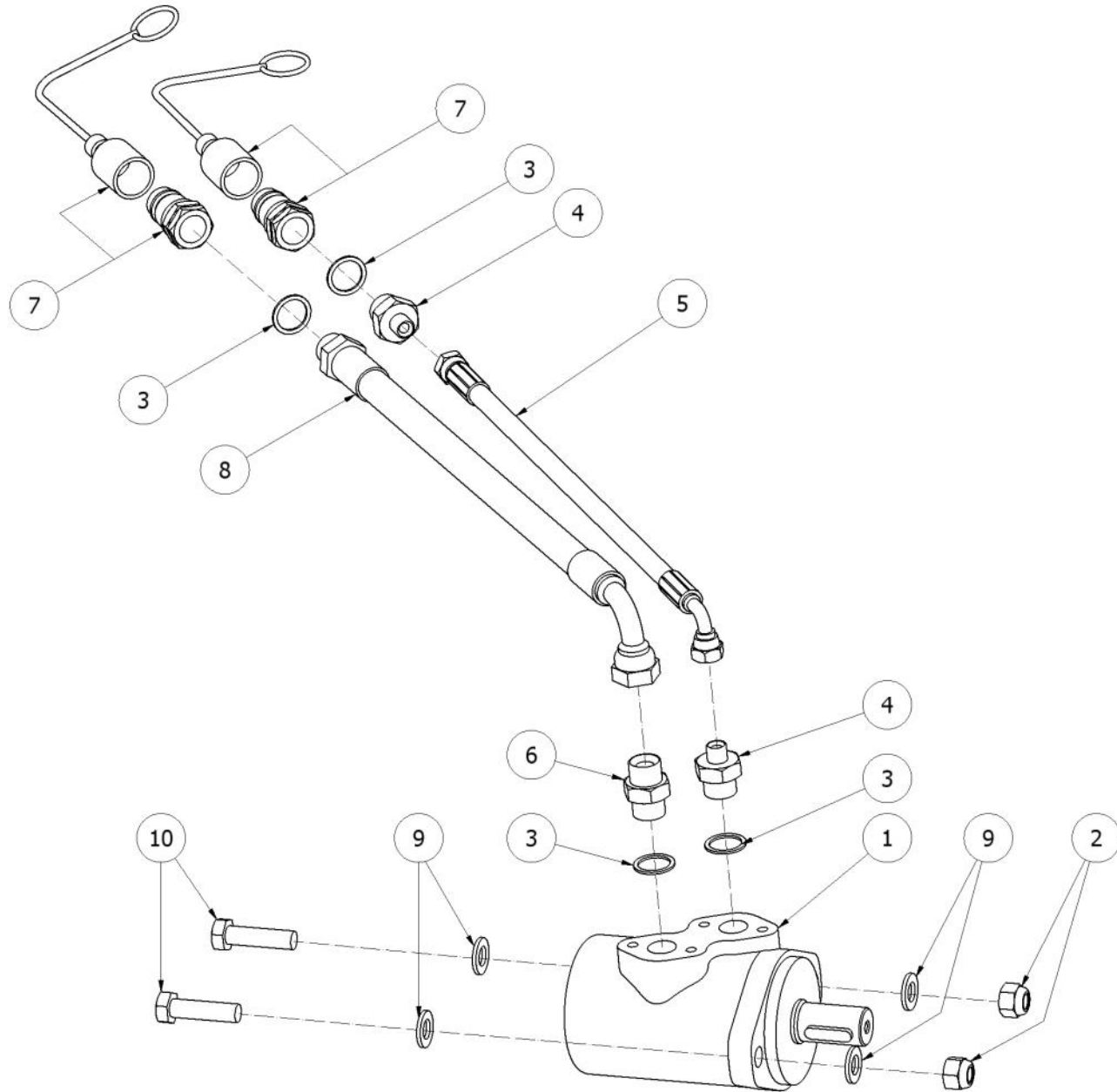
**T400**  
Azionata da albero cardano  
Azionata da motore idraulico  
P.T.O. driven  
Hydraulically driven



**Elenco ricambi - Spare parts list****Tavola 3**

| Elemento | Codice   | Descrizione                              | Description                            | Qtà |
|----------|----------|------------------------------------------|----------------------------------------|-----|
| 1        | R001.014 | RACCORDO VITE DOPPIA 1/2"-1/4"           | DOUBLE SCREW COUPLING 1/2"-1/4"        | 1   |
| 2        | V004.003 | VALVOLA INNESTO RAPIDO 1/2" MS CON TAPPO | VALVE WITH MALE COUPLING 1/2" WITH CAP | 1   |
| 3        | R005.061 | RONDELLA PIANA 1/2" RAME                 | COPPER FLAT WASHER 1/2"                | 1   |
| 4        | T015.033 | TUBO 1/4"R1AP-AS 1/4"F 1/4"F90° L=2000   | PIPE 1/4"R1AP-AS 1/4"M 1/4"F90° L=2000 | 1   |
| 5        | T017.026 | TAPPO PROTEZIONE 1/4"X 19 H 8.0MM        | PROTECTION PLUG 1/4" X 19 H 8.0MM      | 1   |
| 6        | S009.004 | STELO CILINDRO A40 C390 BETONIERE        | CYLINDER STEM A40 C390                 | 1   |
| 7        | G007.011 | GUIDA STELO CIL A40 DE                   | CYLINDER STEM GUIDE A40                | 1   |
| 8        | A003.011 | ANELLO DI TENUTA OR 20 X 2               | OIL SEAL OR 20 X 2                     | 1   |
| 9        | A003.039 | ANELLO GUARN. CIL.A40 (COD.GVO 4032/1)   | CYLINDER OIL SEAL A40 (COD.GVO 4032/1) | 1   |
| 10       | S006.010 | SPINA ELASTICA 8 X 35 UNI 6873           | SPRING PIN 8 X 35 UNI 6873             | 1   |
| 11       | S006.011 | SPINA ELASTICA 5 X 35 UNI 6873           | SPRING PIN 5 X 35 UNI 6873             | 1   |
| 12       | G007.006 | GUIDASTELO FISSO CIL A=40                | CYLINDER FIXED ROD GUIDE A=40          | 1   |
| 13       | A003.009 | ANELLO CIL.28X20X7 B110078/1             | OIL SEAL 28X20X7 B110078/1             | 1   |
| 14       | A003.010 | ANELLO CIL.20X28X5,3WRM078110            | OIL SEAL 20X28X5,3WRM078110            | 1   |
| 15       | S011.002 | SEEGER I 41 UNI 7437                     | SEEGER I 41 UNI 7437                   | 2   |
| 16       | A003.075 | ANELLO DI TENUTA 35X41X3,53 OR 4137      | OIL SEAL 35X41X3,53 OR 4137            | 1   |
| 17       | C003.004 | CAMICIA CILINDRO A40 C290 COMPLETA       | CYLINDER COMPLETE SLEEVE A40 C290      | 1   |

**T400**



**T400**

Azionata da motore idraulico  
Hydraulically driven

**Elenco ricambi - Spare parts list****Tavola 4**

| Elemento | Codice   | Descrizione                              | Description                              | Qtà |
|----------|----------|------------------------------------------|------------------------------------------|-----|
| 1        | M006.001 | MOTORE ORBITALE OMP 100 (BMP100)         | ORBITAL ENGINE OMP 100 (BMP100)          | 1   |
| 2        | D001.034 | DADO E M 12 STOP INOX                    | ST.STEEL HEXAGON NUT DM 12 (STOP)        | 2   |
| 3        | R005.061 | RONDELLA PIANA 1/2" RAME                 | COPPER FLAT WASHER 1/2"                  | 4   |
| 4        | R001.014 | RACCORDO VITE DOPPIA 1/2"-1/4"           | DOUBLE SCREW COUPLING 1/2"-1/4"          | 2   |
| 5        | T015.033 | TUBO 1/4"R1AP-AS 1/4"F 1/4"F90° L=2000   | PIPE 1/4"R1AP-AS 1/4"M 1/4"F90° L=2000   | 1   |
| 6        | R001.003 | RACC. VITE DOPP 1/2" - 1/2"              | DOUBLE SCREW COUPLING 1/2" - 1/2"        | 1   |
| 7        | V004.003 | VALVOLA INNESTO RAPIDO 1/2" MS CON TAPPO | VALVE WITH MALE COUPLING 1/2" WITH CAP   | 2   |
| 8        | T015.030 | TUBO 1/2"R1AP-AS 1/2"M 1/2"F 90° L=2000  | PIPE 1/2" R1AP-AS 1/2"M 1/2"F 90° L=2000 | 1   |
| 9        | R005.018 | RONDELLA PIANA DM12 INOX UNI6592 DIN125A | ST.STEEL FLAT WASHER DM12 UNI 6592       | 4   |
| 10       | V003.036 | VITE TE 12 X 45 INOX UNI 5739 DIN 931    | ST.STEEL HEX.HEAD SCREW 12 X 45 UNI5739  | 2   |

**T400**

Azionata da motore idraulico  
Hydraulically driven



**O.M.B. OFFICINE MECCANICHE BOVESANE S.R.L.**  
Via Cuneo 153/155 - 12012 BOVES (CN)  
ITALY

Tel. Estero +39 0171 391511  
Tel. Italia +39 0171 391501  
Fax. +39 0171 391507  
E-Mail [omb@grupppocavallo.it](mailto:omb@grupppocavallo.it)